

AKHIR 118 — CANTIERI DI PISA



Builder: CANTIERI DI PISA

Year Built: 2016

Model: Mega Yacht

Price: PRICE ON APPLICATION

Location: Italy

LOA: 118' 7" (36.13m)

Beam: 24' 8" (7.51m)

Min Draft: 4' 6" (1.37m)

Cruise Speed: 20 Kts. (23 MPH)

Max Speed: 27 Kts. (31 MPH)

Our experienced yacht broker, Andrey Shestakov, will help you choose and buy a yacht that best suits your needs Akhir 118 — CANTIERI DI PISA from our catalogue. Presently, at Shestakov Yacht Sales Inc., we have a wide variety of yachts available on our sale's list. We also work in close contact with all the big yacht manufacturers from all over the world.

If you would like to buy a yacht Akhir 118 — CANTIERI DI PISA or would like help answering any questions concerning purchasing, selling or chartering a yacht, please call +1(954)274-4435

TABLE OF CONTENTS

TABLE OF CONTENTS	2
SPECIFICATIONS	3
Overview	3
Basic Information	3
Dimensions	3
Speed, Capacities and Weight	3
Accommodations	4
Hull and Deck Information	4
Engine Information	4
PHOTOS	5
CONTACTS	9
Contact details	9
Telephones	9
Office hours	9
Address	9

SPECIFICATIONS

Overview

This Cantieri Di Pisa Akhir 118 offers an expansive saloon flowing into a formal dining area served by a large galley and her accommodation can be customized to sleep eight guests in a four cabin layout or 10 in five cabins, all below deck and all with en suite bathroom facilities.

On deck, the Akhir 118 offers a spacious flybridge with sunbathing, barbecue and dining areas, a large aft deck with a table and seating for al fresco dining. There is also a recessed seating area at the bow.

Capable of a top speed of 27 knots, the Akhir 118 would normally retail at €11.5 million but, as an incentive to get production moving again, the yard is asking €9.2 million. Delivery time would be approximately six months from signature of contract.

Basic Information

Category: Mega Yacht

Model Year: 2016

Year Built: 2016

Country: Italy

Fly Bridge: Yes

Cockpit: Yes

Dimensions

LOA: 118' 7" (36.13m)

Beam: 24' 8" (7.51m)

Min Draft: 4' 6" (1.37m)

Speed, Capacities and Weight

Cruise Speed: 20 Kts. (23 MPH)

Cruise Speed Range: 840

Max Speed: 27 Kts. (31 MPH)

Displacement: 282191.69536 Pounds

Water Capacity: 977.4365924 Gallons

Holding Tank: 356.6322702 Gallons

Fuel Capacity: 5283.44104 Gallons

Accommodations

Total Cabins: 5

Hull and Deck Information

Hull Material: GRP

Hull Configuration: Semi-Displacement

Engine Information

Engines: 2

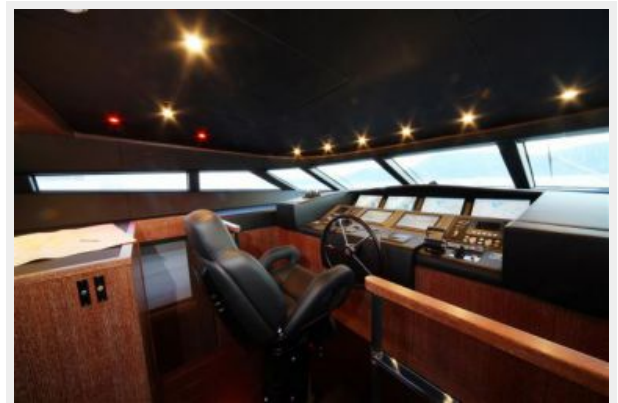
Manufacturer: MTU

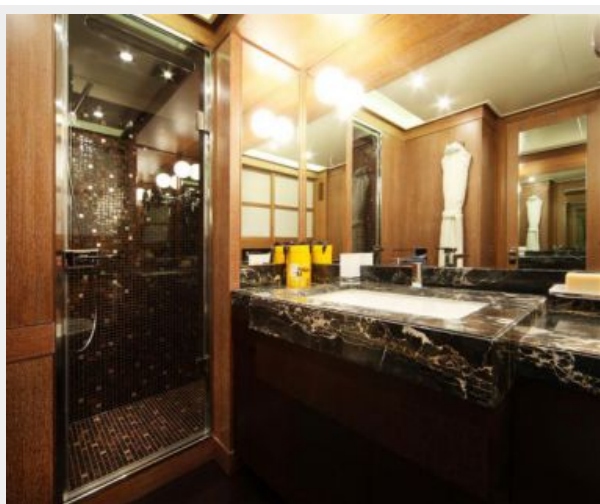
Model: 16V 2000 M93

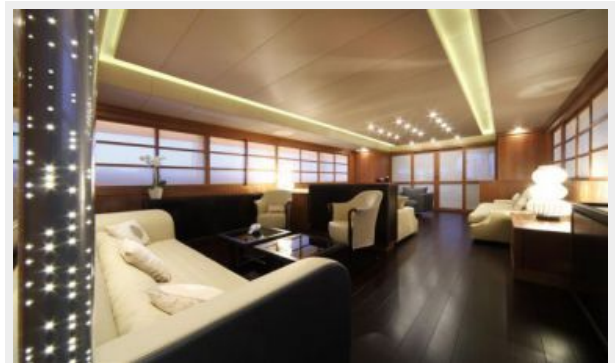
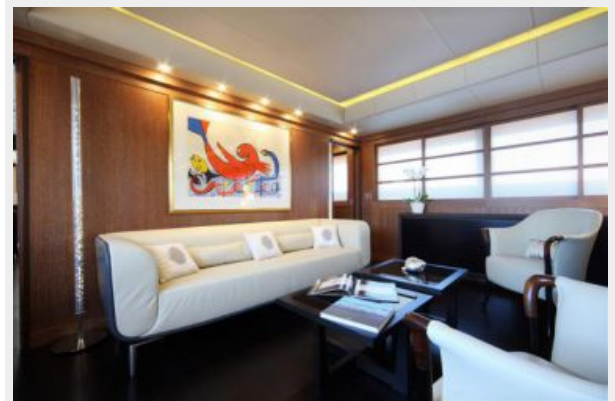
Engine Type: Inboard

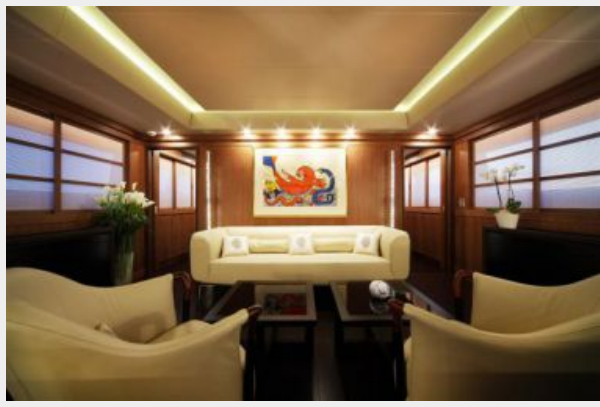
Fuel Type: Diesel

PHOTOS









CONTACTS

Andrey Shestakov, leading yacht broker of the sales department of Shestakov Yacht Sales Inc. Shestakov Yacht Sales Inc., the official representative of the Miami/Fort Lauderdale FL headquarters.

Contact details

Email: andrey@shestakovyachtsales.com

Web: shestakovyachtsales.com/en/

Telephones

USA: +1(954)274-4435

Office hours

Monday – Saturday: **9:00 - 21:00** EDT

Sunday: **closed**

Address



Harbour Towne Marina, 850 NE 3rd St,
STE 213, Dania, FL 33004