

FULL TIME — BERTRAM



Builder: BERTRAM

Year Built: 2007

Model: Sport Fisherman

Price: PRICE ON APPLICATION

Location: United States

LOA: 63' 0" (19.20m)

Beam: 18' 1" (5.51m)

Max Draft: 5' 3" (1.60m)

Cruise Speed: 29 Kts. (33 MPH)

Max Speed: 36 Kts. (41 MPH)

Our experienced yacht broker, Andrey Shestakov, will help you choose and buy a yacht that best suits your needs **Full Time — BERTRAM** from our catalogue. Presently, at Shestakov Yacht Sales Inc., we have a wide variety of yachts available on our sale's list. We also work in close contact with all the big yacht manufacturers from all over the world.

If you would like to buy a yacht **Full Time — BERTRAM** or would like help answering any questions concerning purchasing, selling or chartering a yacht, please call **+1(954)274-4435**

TABLE OF CONTENTS

TABLE OF CONTENTS	2
SPECIFICATIONS	4
Overview	4
Basic Information	4
Dimensions	4
Speed, Capacities and Weight	4
Accommodations	4
Hull and Deck Information	5
Engine Information	5
DETAILED INFORMATION	6
Fly Bridge	6
Forward VIP Stateroom	6
Bunk Rooms	6
Master Stateroom	6
Guest Stateroom	6
Optional Features	6
Salon	6
Galley	7
Cockpit	7
Engine and Mechanical	7
Exclusions	7
Disclaimer	7
PHOTOS	8
CONTACTS	15
Contact details	15
Telephones	15
Office hours	15
Address	15

SPECIFICATIONS

Overview

This is the finest Bertram on the market. Lots of customization and many upgrades. The owner is meticulous in the upkeep. Truly a fishing machine. She has numerous tournament wins and showings. The owner is moving up and says sell. A must see for a fishing family. She shows like new inside and out.

1400 ENGINE HOURS SINCE OVERHAUL

Basic Information

Category: Sport Fisherman

Model Year: 2007

Year Built: 2007

Country: United States

Dimensions

LOA: 63' 0" (19.20m)

Beam: 18' 1" (5.51m)

Max Draft: 5' 3" (1.60m)

Speed, Capacities and Weight

Cruise Speed: 29 Kts. (33 MPH)

Max Speed: 36 Kts. (41 MPH)

Displacement: 95609 Pounds

Water Capacity: 251 Gallons

Holding Tank: 100 Gallons

Fuel Capacity: 1850 Gallons

Accommodations

Total Cabins: 4

Hull and Deck Information

Hull Material: Fiberglass

Engine Information

Manufacturer: Caterpillar

Model: C-32 ACERT

Fuel Type: Diesel

DETAILED INFORMATION

Fly Bridge

3 Garmin 8000I Two are interfaced together, 2014 Garmin 72mile radar w/6' boom, 2014 Furuno RD30 Garmin depth with Chirp transducer, 2014 Fusion MS-IP750I New 2016 Simrad AP25 autopilot FLIR ACR spotlight Sidepower Bow Thruster 2 Icom VHF radios IC-M604 1, 2015 2 Mya Epoch US-9 Super teaser reels 4 overhead blue lights 2 overhead red lights Blue accent lighting ACR EPIRB Control switch for the windlass Refrigerated drink box Sink w/water Washdown Siquet

Forward VIP Stateroom

Forward VIP Stateroom Samsung 17" HD TV. New in Feb 2015 Directv Latin America Directv Panasonic CQ-D5501w DVD,CD, Stereo Panasonic phone/ SAT phone Custom comfort mattress New in 2014

Bunk Rooms

Insignia TV Directv Panasonic CQ-D5501u DVD,CD, Stereo Custom Comfort mattress new in 2014

Master Stateroom

LG 42" HD TV New Feb 2015 Directv HD Latin America Directv Bose stereo, DVD,CD, player with Surround Sound. Panasonic phone/SAT phone Custom Comfort mattress New 2014

Guest Stateroom

Sharp TV Directv Latin America Directv Panasonic stereo ,DVD,CD

Optional Features

Washer/ Dryer in Companion way Malber P21 Washer Malber TD700 Dryer

Salon

Central vacuum system LG 42' HD TV New 2014 Directv HD Latin America Directv Bose stereo, DVD,CD player w/surround sound Panasonic phone/SAT phone Sirius satellite music Battery

back up for all the equipment Custom couch and ottomans w/ tackle storage underneath. New in April 2014 Scotsman Ice machine New in April 2015

Galley

4 Subzero refrigerators Dishwasher GE Microwave/ Convection oven New Feb 2015 KVH
Satelite Phone and wifi Garmin wifi

Cockpit

Murray Products fighting chair and rocket launcher back rest 3 Custom mezzanine freezers
Refrigerated drink box 2 50amp Shore cords and reels Ice chipper in transom fish box Ice chipper
in live well Fusion stereo remote panel JL Audio speakers Livewell pump box with 3 Rule 2000
pumps. Plumbing for 2 deck wells 2 12volt outlets for deep dropping or dredge reels 3 white
underwater lights Insulated in deck fish box Reinforced rod holders in the pilasters for dredge
reels

Engine and Mechanical

2 Kohler 20KW generators Port 1485 Hours Starboard 1200 Hours Dometic Eskimo Ice machine
EI540D-230 Dometic Eskimo Ice machine 2 Headhunter freshwater pumps 4 A/C cooling pumps.
2 per side FCI watermaker w/3 permiators New in May 2015 also new high pressure pump May
2015 60gal/hour

Exclusions

Owner's personal belongings.

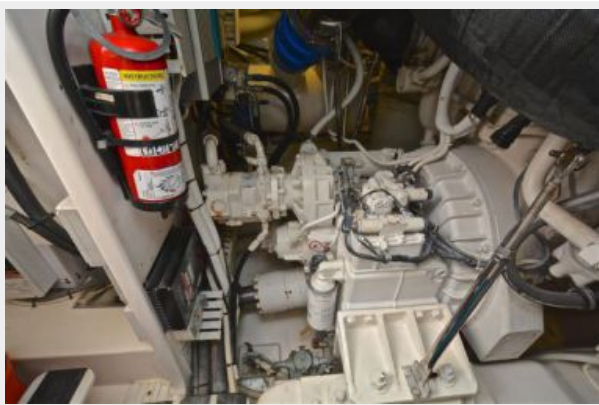
Disclaimer

The Company offers the details of this vessel or yacht in good faith but cannot guarantee or
warrant the accuracy of this information nor warrant the condition of the vessel. A buyer should
instruct his representatives, agents, or his surveyors, to investigate such details as the buyer
desires validated. This vessel or yacht is offered subject to prior sale, price change, or withdrawal
without notice.

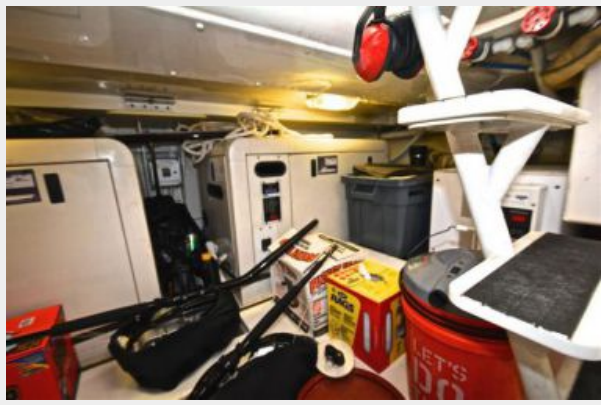
PHOTOS















CONTACTS

Andrey Shestakov, leading yacht broker of the sales department of Shestakov Yacht Sales Inc. Shestakov Yacht Sales Inc., the official representative of the Miami/Fort Lauderdale FL headquarters.

Contact details

Email: andrey@shestakovyachtsales.com

Web: shestakovyachtsales.com/en/

Telephones

USA: +1(954)274-4435

Office hours

Monday – Saturday: **9:00 - 21:00** EDT

Sunday: **closed**

Address



Harbour Towne Marina, 850 NE 3rd St,
STE 213, Dania, FL 33004