

LADY COLUMBO — MERRITT BOAT WORKS



Builder: MERRITT BOAT WORKS

Year Built: 2003

Model: Sport Fisherman

Price: PRICE ON APPLICATION

Location: United States

LOA: 80' 0" (24.38m)

Beam: 20' 3" (6.17m)

Max Draft: 5' 2" (1.57m)

Cruise Speed: 27 Kts. (31 MPH)

Max Speed: 32 Kts. (37 MPH)

Our experienced yacht broker, Andrey Shestakov, will help you choose and buy a yacht that best suits your needs **Lady Columbo — MERRITT BOAT WORKS** from our catalogue. Presently, at Shestakov Yacht Sales Inc., we have a wide variety of yachts available on our sale's list. We also work in close contact with all the big yacht manufacturers from all over the world.

If you would like to buy a yacht **Lady Columbo — MERRITT BOAT WORKS** or would like help answering any questions concerning purchasing, selling or chartering a yacht, please call **+1(954)274-4435**

TABLE OF CONTENTS

TABLE OF CONTENTS	2
SPECIFICATIONS	3
Overview	3
Basic Information	3
Dimensions	3
Speed, Capacities and Weight	3
Accommodations	3
Hull and Deck Information	3
Engine Information	4
DETAILED INFORMATION	5
Galley	5
Fishing Equipment	5
Deck Equipment	5
Electrical Equipment	6
Electronics & Navigation Equipment	6
Mechanical Equipment	6
Exclusions	7
Exclusions	7
Disclaimer	7
PHOTOS	8
CONTACTS	19
Contact details	19
Telephones	19
Office hours	19
Address	19

SPECIFICATIONS

Overview

"Lady Columbo" combines comfort and extreme performance in a spacious and perfectly designed layout. She offers four (4) cabins and (4) heads, with a well-equipped galley, and all the amenities of home. State of the art electronics make navigation a breeze, and whether competing in a fishing tournament or cruising the high seas, this 80 Merritt will not disappoint.

Basic Information

Category: Sport Fisherman

Model Year: 2003

Year Built: 2003

Country: United States

Dimensions

LOA: 80' 0" (24.38m)

Beam: 20' 3" (6.17m)

Max Draft: 5' 2" (1.57m)

Speed, Capacities and Weight

Cruise Speed: 27 Kts. (31 MPH)

Max Speed: 32 Kts. (37 MPH)

Displacement: 120000 Pounds

Water Capacity: 400 Gallons

Fuel Capacity: 3200 Gallons

Accommodations

Total Cabins: 4

Total Heads: 4

Hull and Deck Information

Hull Material: Composite

Engine Information

Manufacturer: Detroit Diesel/MTU

Model: 16V2000

Engine Type: Inboard

Fuel Type: Diesel

DETAILED INFORMATION

Galley

- Dishwasher
- Washer
- Dryer
- Garbage Disposal
- KitchenAid icemaker
- Custom Merritt refrigerator with freezer
- Custom Merritt icebox
- Custom Merritt deep freezer
- Separate oven with 4 burner stove pull out on forward bulkhead
- Microwave
- Water heater
- Pressure water system
- Trash compactor

Fishing Equipment

- Bait freezer
- Live wells
- Cockpit sink
- Merritt fighting chair
- Rupp outriggers 44'
- Miya Epoch electric reels for teasers
- Transom door
- Tuna tower - Jack Hopewell - 36'

Deck Equipment

- Anchor with lines
- Bow pulpit and rails
- Side stanchions with lifelines
- Bimini top
- Flybridge curtains
- Bridge curtains
- Coast Guard Approved Safety package
- Teak deck
- Saltwater deck washdown system
- 10' soft bottom inflatable w/10hp Yamaha
- Transom lights

- Fenders and lines
- Life jackets
- Navigation lights
- Search light
- Spreader lights
- Hydraulic Muir windlass
- Life raft on flybridge Bimini top
- Kahlenberg air horns
- Eskimo ice machine
- Rubber boat new (Dec. '11)

Electrical Equipment

- Batteries
- Battery parallel switch
- Automatic battery charger
- Northern Lights primary generator 30kw
- Northern Lights secondary generator 30kw
- Electrical system: DC 12V, 24V; AC 110V, 220V
- Nutone vacuum system

Electronics & Navigation Equipment

- Gyrostar II autopilot w/Nautopilot ND60
- Compass
- Depth Sounder Ritchie 6"r (1)
- Furuno color LED FCV1200
- Furuno/Simrad CA42/50MKII 72 mile radar
- ICOM 802 SSB radio
- Night Vision Technologies model 1018
- Security system & camera
- VHF Primary ICOM 504
- VHF Secondary ICOM 504
- Rudder angle indicator
- Iridium satellite communication
- Northstar 951/Nobeltec satellite navigation
- Stereo
- TV's
- Video recorder

Mechanical Equipment

- Marine Air AC reverse cycle
- (2) bilge blowers
- (2) automatic & manual bilge pumps (8)
- Quantum bow thruster 30D
- Controls: tower, bridge
- Emergency engine stop
- Engine alarm
- CO2 automatic fire extinguishing system
- Fresh water cooling system
- Fuel filters
- Fuel shut off valve (engines)
- Overboard holding head
- Lube oil storage and transfer system
- (2) extra propellers
- Raw water sea trainer
- Jastram hydraulic steering
- DDEC/Bennett synchronizer
- ZF BW255 2:1 transmission
- Watermaker Inc. watermaker (2) 600 GPD

Exclusions

Exclusions include, but are not limited to, all owner's personal belongings, tools and tackle. A detailed list of exclusions will be provided at closing.

Exclusions

Owner's personal belongings.

Disclaimer

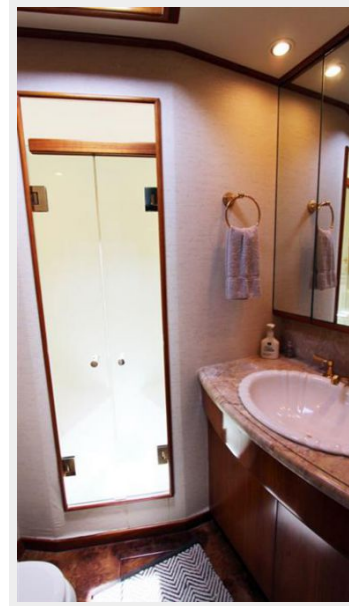
The Company offers the details of this vessel or yacht in good faith but cannot guarantee or warrant the accuracy of this information nor warrant the condition of the vessel. A buyer should instruct his representatives, agents, or his surveyors, to investigate such details as the buyer desires validated. This vessel or yacht is offered subject to prior sale, price change, or withdrawal without notice.

PHOTOS

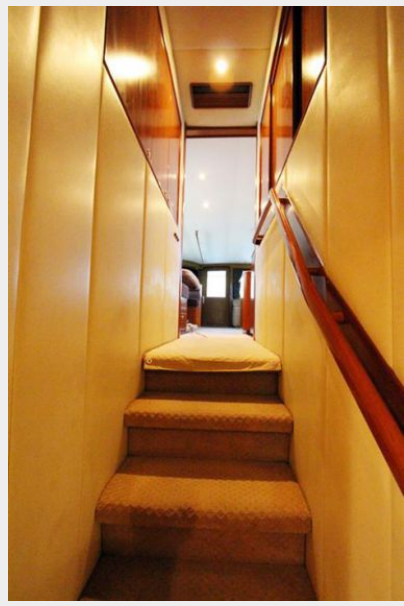






















CONTACTS

Andrey Shestakov, leading yacht broker of the sales department of Shestakov Yacht Sales Inc. Shestakov Yacht Sales Inc., the official representative of the Miami/Fort Lauderdale FL headquarters.

Contact details

Email: andrey@shestakovyachtsales.com

Web: shestakovyachtsales.com/en/

Telephones

USA: +1(954)274-4435

Office hours

Monday – Saturday: **9:00 - 21:00** EDT

Sunday: **closed**

Address



Harbour Towne Marina, 850 NE 3rd St,
STE 213, Dania, FL 33004