

NANEA — FAR OCEAN



Судостроитель: FAR OCEAN

Год постройки: 1992

Модель: Моторная яхта

Цена: **ЦЕНА ЯХТЫ ПО ЗАПРОСУ**

Местонахождение: United States

Длина общая: 73' 0" (22.25m)

Ширина: 19' 6" (5.94m)

Макс. осадка: 5' 0" (1.52m)

Купить Nanea — FAR OCEAN а также выбрать подходящую вам яхту из нашего каталога яхт вам поможет опытный яхтенный брокер Андрей Шестаков. На сегодняшний день компания Shestakov Yacht Sales Inc. имеет большое количество яхт в собственном списке продаж, а также тесно сотрудничает со всеми крупными яхтенными производителями по всему миру.

Для того чтобы купить яхту Nanea — FAR OCEAN а также проконсультироваться по любому вопросу связанному с покупкой, продажей, чартером яхт позвоните по телефону **+7(918)465-66-44**.

ОГЛАВЛЕНИЕ

ОГЛАВЛЕНИЕ	2
ХАРАКТЕРИСТИКИ	3
Обзор	3
Основная информация	3
Размеры	3
Скорость, вместимость и масса	3
Размещение	3
Корпус и палуба	4
Информация о двигателе	4
ПОДРОБНОЕ ОПИСАНИЕ	5
Specifications	5
Исключения	11
Отказ от ответственности	11
ФОТОГРАФИИ	12
КОНТАКТЫ	18
Контактная информация	18
Телефоны	18
Время работы	18
Адрес	18

ХАРАКТЕРИСТИКИ

Обзор

This 73' Striker model is a proven seaworthy yacht, solidly built, and completely updated. The definition of a proven yacht is when an owner cruises the boat from South Africa, through the Panama Canal to Hawaii. The definition of a completely updated yacht is when the boat is stripped down to an aluminum hull/structure and everything going back in during a 2-3 year refit is NEW - - EVERYTHING!!. From new engines and generators, to new interior design and finish, to new electronics and everything in between. For all intensive purposes this is a 2009 model with only 110 hours.

(4) staterooms and (3) heads with showers plus a day head on the cal deck.

Amazing Striker designed by Pieter Beeldsifer of Holland and constructed in South Africa.

Основная информация

Тип судна: Моторная яхта

Модельный год: 1992

Год постройки: 1992

Год обновления: 2009

Страна: United States

Размеры

Длина общая: 73' 0" (22.25m)

Ширина: 19' 6" (5.94m)

Макс. осадка: 5' 0" (1.52m)

Скорость, вместимость и масса

Вместимость воды: 500 Gallons

Объем топливного бака: 3000 Gallons

Размещение

Всего кают: 4

Всего ком. состава: 3

Корпус и палуба

Материал корпуса: Fiberglass

Информация о двигателе

Двигатели: 2

Производитель: Caterpillar

Модель: 3412

Тип топлива: Diesel

ПОДРОБНОЕ ОПИСАНИЕ

Specifications

General Arrangement

This outstanding sportfisher is a rare breed today. She is designed to fish or cruise with the family in maximum comfort. Bring all of your friends, she has room to spare. The enclosed bridge of the boat is very spacious and will accommodate many guests. Enter the nearly 24 foot beam cockpit you are greeted with, a fighting chair and plenty of room to take care of any fishing business or you can drop in a table and be set for entertaining. Up a few steps to the salon level you have vertical rod storage lockers and an on deck head and an automatic sliding door to the salon.

Entering the vessel through the main salon door, the starboard side has a leather chair and L-shaped couch and entertainment center. To the port are the stairs to the enclosed bridge and forward is the galley with island workspace with sink and refrigeration. Going forward down the companionway to starboard is a guest stateroom with twin berths and ensuite head. To port is the master with queen walk around berth and ensuite head, Continuing forward to port is a common area with linen locker and washer/dryer in a dedicated locker. Forward to both port and starboard are two additional guest staterooms with over/under berths that share the jack & jill head forward.

The enclosed pilothouse has great visibility, navigation electronics and seating for entertaining guests. Aft through the pilothouse door is access to a full walk around Portuguese deck, engine controls looking aft and access to the tuna tower.

Salon & Galley

Walking into the salon through the automatic sliding door you are met with a bright interior, rich wood tones of the custom cabinetry and the feel of a "great room". The salon to starboard has comfortable leather seating, a bar, and entertainment center. The galley is open to the salon and has beautiful granite countertops with a compliment of high end stainless steel Sub Zero and Wolf appliances.

Galley

- Granite tops on all counters
- Wolf- CT30E- Cooktop
- Wolf- Range vent
- Wolf- SO30- Wall oven
- Wolf- MW24- Microwave
- (2) Sub Zero 700 BR- Two drawer refrigerators
- Large kitchen island
- Sub Zero- 700FR Freezer
- Sub Zero- High capacity ice maker.
- Deep stainless steel double sink
- Emerson- Garbage disposal
- Sub Zero- 315W- Wine cooler
- Halogen task lighting

Salon:

- African mahogany flooring throughout
- Leather L-Shape settee
- Leather chair
- Bar w/ granite top
- Wine cooler
- Coffee table
- TORMAX- Automatic sliding door
- Entertainment Center- remote located w/ overhead speaker throughout vessel.-Samsung DVD-Dish Network Sat TV-Crestron Stereo-DVR
- Crestron- Entertainment Management system
- Panasonic 55" LCD TV
- Remote LCD TV lift and pivot

Accommodations**Master Stateroom**

Down three stairs forward and to port is a large Master stateroom with ensuite head. The island queen berth is athwartships and has a luxurious feel nested in the custom cabinetry. The ensuite head is forward tiled in travertine and has high end fixtures.

- King size berth
- Storage underneath & drawers
- 2 large cedar lined lockers
- Built in storage with drawers
- Locker with shelves & drawers
- Television/sat & cable
- Private head with lots of storage
- large full shower
- Indirect lighting
- Direct lighting
- Digital control a/c

Ensuite Head:

- Headhunter Toilet
- Travertine tile floor and shower
- Frameless shower door
- Granite countertops
- large well lighted vanity with mirror
- Kohler brushed SS bathroom fixtures and sink.

VIP Stateroom: The VIP stateroom is opposite the Master and has side by side single berths

and an ensuite head.

Stateroom:

- Side by side largeberths
- Reading lights
- Air conditioning
- Storage drawers under berths
- Cedar lined hanging locker
- Direct lighting/indirect lighting

Head:

- Headhunter Toilet
- Travertine tile floor/shower
- Frameless shower door
- Kohler brushed SS bathroomfixtures and sink.

Guest Staterooms:

Just before entering the guest staterooms, there is a common areathat has laundry facilities tastefully hiddenincustom cabinets. The guest staterooms are mirror images of one another and have over/under berths for a total of 4 guest berths. The two stateroomshavetheir own separate entrance tothe Jack and Jill head located foreword.

Staterooms:

- Over/under-largeberths
- Reading lights
- Air conditioning
- Storage drawers under berths
- Cedar lined hanging locker
- Direct lighting/indirect lighting

Jack & Jill head

- Headhunter Toilet
- Travertine tile
- Frameless shower door
- Kohler brushed SS bathroomfixtures and sink.

Pilothouse

Up the curved stairwell from the salon is the enclosed pilothouse that even the most demanding of captains willbe impressed. Her navigation equipment and layout give you an incredible command of this impressive yacht. Through the aft bulkhead door and you are greeted withlarge secure deckspace withsecond control station facing aft so the captain can take care of thebig catches. The pilothousealso has full walk around access with protection fromthe Portuguesebridge.

Features:

- ZF Mather Pneumatic enginecontrols (3- Stations)
- Comar Electrical- Shorepowercontrols
- Comar Electrical- 24VCD, 12VDCdistribution panel
- Comar Electrical- 120/240VACdistribution panel
- Firebox-remote panel w/engineshutdown override
- Air Conditioning & Controls
- KVH- Remote interface panel
- Windlass controls
- Delta "T"- Remote panel
- Watermaker- Remote panel
- Magnum Inverter control
- Generator remote start/stop and instrumentation (Both Gen's)
- Exalto- Winshieldwipers
- Exalto- Wiper control with delay and washer
- Crestron-wireless stereo remote
- Speakers overhead and outsidedeck
- (2) Stidd- Slimline helm chairs
- L-Shaped settee with table

Navigation Equipment:

- Simrad GB-60 Glass Bridge system including:(4) monitors,Radar w/12 KW open array-Echo sounder- w 1000 Watt transducer- Chart plotting system-(4)Hatteland MMDDisplays-Simrad PD60-control-Chart database (Full)-Tides and Current-
- Simrad AI80-Class A- AIS
- KRILL- Whole ship monitoringsystem
- ICOM IC-M- VHF-(3) Remote microphones
- KVH F33- Tracphone system
- Simrad AP25- Autopilotfully integrated w/chartplotter
- Simrad APXX- Wirellessautopilot control
- Hynautic steering system w/S/S helm wheel
- Jastram- Follow up lever steering
- FLIR Nav 2 IR- Night vision ssystem
- ACR- Remote searchlightcontrol
- Kahlenberg- Horn control
- Nav. Light controls

Mechanical, Hydraulics, & Air Conditioning

The engineroom of "Nanea" is impressive. The engines, generators, and system design are all put together with incredible precision and attention to detail.

- **Port Engine:**- Caterpillar-Engine
Model: 3412-Engine HP: 1350HP-
Engine Hours 110
- **Starboard Engine:** -Caterpillar-Engine
Model: 3412-Engine HP: 1350HP-Engine
Hours 110
- **PortGenerator** - -Northern lights
Generator Output: 25kW-Engine Model:
Lugger- L864, Engine Hours 122
- **Starboard Generator:** --Northern lights
Generator Output: 25kW-Engine Model:
Lugger- L864- Engine Hours 82

Mechanical systems:

- Caterpillar- engine room displays
- Caterpillar- Remote Start/stop
- Marine Exhaust Systems- Engine exhaust muffler & underwater exhaust
- Firesuppression system-(2) Fireboy HFC 227 fixed system with engine shutdown.
- (2)Racor- 75/100MAX Dual Filter/water separator(Primary)
- Fuel Manifold Feed and Return Welded S/S manifold and valves
- Fuel Transfer System (4-Tanks)--S/S Manifold --Pompen-Utrecht- heavy duty Fuel Transfer pump
- Hydraulic hydraulic power steering
- Delta "T" 120VAC Engine room ventilation
- S/S shafts- 3" dia.
- NiBrAl propellers- 34X49.5"
- PYI shaft seals
- Escape hatch to Salon

Hydraulics/Pneumatic systems:

Bow Thruster: Hydraulic w/ three control stations

Engine/ Transmission controls: ZF Mathers Pneumatic controls

Rupp Outriggers: Hydraulically actuated

Air-conditioning:

Technicold Chilled Water Air Conditioning & Heating System. Model CW 48 SC

(2) 48,000BTU Compressors

Electrical & Plumbing

As impressive as the mechanical systems on "Nanea" are, the electrical and plumbing systems also shine. Great care and engineering was put into these systems to make them easy to use, easy to maintain, and as trouble free as possible.

Electrical:

- Northern Lights 25KW Generators--Optima start battery
- (2) Charles C-Power ISP Boost 50Shore power Transformers
- Magnum- Inverter Charger
- Newmar PT-24-60W- Battery Charger
- Newmar 32-12-25 DC-DCconverter
- KRILL- Systems monitoring-Electrical-Tankage-Engine
- Comar Electrical distributionpanels in Pilothouse and E/R
- Vimar switches and dimmers
- Halogen lighting throughout
- LED indirect rope lighting
- Underwater lighting

Plumbing:

- Domestic water system usePex tubingthroughout
- Headhunter-
- Headhunter- Xcaliber saltwater pump
- (1) Grey and (2) Black water holding tanks
- Vanguard- Hot water heater30 Gallon- 240VAC--Taco Hot water circulation
- Village Water Maker
- PEX water tubing throughout

Deck, Cockpit, and Tuna Tower

Cockpit

- Murray- fighting Chair on offset swivel
- Transom door
- Teak decks and caprail
- Fresh and salt waterwashdown
- (2) Fish boxes
- Fishing rod holders
- Bait & tackle drawers
- Large vertical rod storage lockers
- On deck headw/ shower

Tuna Tower:

- Full anodized Tuna Tower--Rupp hydraulic actuated outriggers--Rigid Bimini top with antenna & done mounts
- Full helm--Garmin Chartplotter--Simrad FU35 Jog steering--Simrad RI35 RAI--Bow Thruster control

Foredeck:

- Brower 2000 PoundHydraulic davit with wireless remote
- Chain locker with deck hatch
- Large storage lockers
- Eurovinil- 6 Person-InflatableLife raft
- Maxwell- 3500 Vertical Windlass
- S/S Plow Anchor
- 1/2" All Chain rode

Исключения

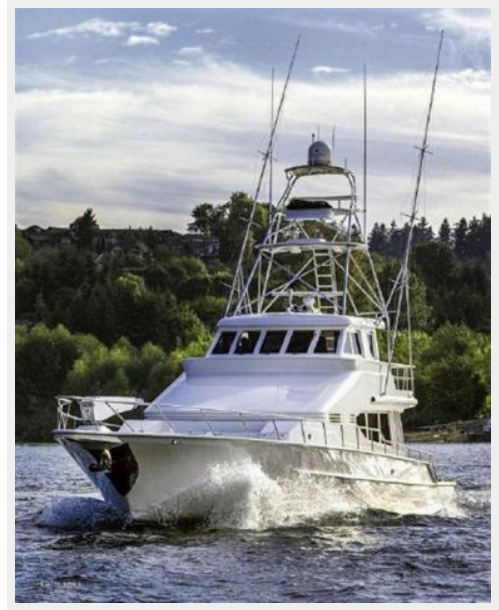
При продаже яхты исключаются личные вещи владельца.

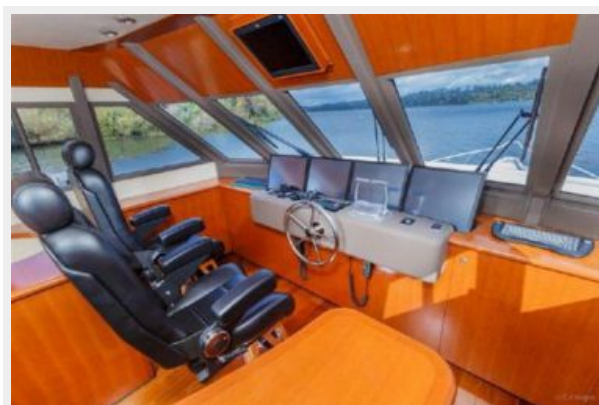
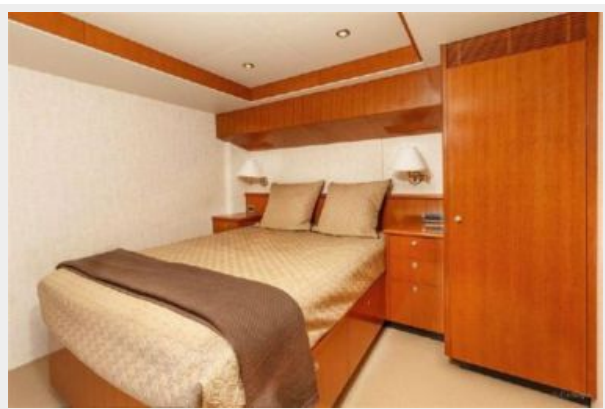
Отказ от ответственности

Компания предоставляет описание судна или яхты добросовестно, но не может гарантировать точность этой информации, а также не ручается за техническое состояние. Покупатель должен проинструктировать своих агентов или оценщиков исследовать представленную информацию более подробно, по собственному желанию. Продажа судна или яхты, изменение цены или снятие с продажи будет происходить без предварительного уведомления.

ФОТОГРАФИИ













КОНТАКТЫ

Андрей Шестаков (Andrey Shestakov) – ведущий яхтенный брокер отдела продаж яхт и судов компании Shestakov Yacht Sales Inc. Официальный представитель Shestakov Yacht Sales Inc. для русскоговорящих клиентов в центральном офисе компании в Майами/Форт Лодердейл/Флорида/США.

Контактная информация

Email: andrey@shestakovyachtsales.com

Web: shestakovyachtsales.com

Телефоны

Краснодарский край: **+7(918)465-66-44**

США, Майами, Флорида: **+1(954)274-4435**

Время работы

Понедельник – Суббота: **9:00 - 21:00**
EDT

Воскресенье: **Закрито**

Адрес



Harbour Towne Marina, 850 NE 3rd St,
STE 213, Dania, FL 33004