

BLUE GROTTO — SELENE



Судостроитель: SELENE

Год постройки: 2009

Модель: Траулер

Цена: **ЦЕНА ЯХТЫ ПО ЗАПРОСУ**

Местонахождение: United States

Длина общая: 62' 0" (18.90m)

Ширина: 16' 8" (5.08m)

Макс. осадка: 5' 11" (1.80m)

Крейс. скорость: 9 Kts. (10 MPH)

Купить **Blue Grotto — SELENE** а также выбрать подходящую вам яхту из нашего каталога яхт вам поможет опытный яхтенный брокер Андрей Шестаков. На сегодняшний день компания **Shestakov Yacht Sales Inc.** имеет большое количество яхт в собственном списке продаж, а также тесно сотрудничает со всеми крупными яхтенными производителями по всему миру.

Для того чтобы купить яхту **Blue Grotto — SELENE** а также проконсультироваться по любому вопросу связанному с покупкой, продажей, чартером яхт позвоните по телефону **+7(918)465-66-44**.

ОГЛАВЛЕНИЕ

ОГЛАВЛЕНИЕ	2
ХАРАКТЕРИСТИКИ	3
Основная информация	3
Размеры	3
Скорость, вместимость и масса	3
Корпус и палуба	3
Информация о двигателе	3
ПОДРОБНОЕ ОПИСАНИЕ	4
Salon	4
Galley	4
Raised Pilothouse	5
Master Stateroom	7
VIP Stateroom	8
VIP Head	8
Aft deck/ Cockpit	8
Lazarette	9
Electronics and Navigation systems	9
Исключения	10
Отказ от ответственности	10
ФОТОГРАФИИ	12
КОНТАКТЫ	14
Контактная информация	14
Телефоны	14
Время работы	14
Адрес	14

ХАРАКТЕРИСТИКИ

Основная информация

Тип судна: Траулер

Модельный год: 2009

Год постройки: 2009

Страна: United States

Размеры

Длина общая: 62' 0" (18.90m)

Длина по ватерлинии: 54' 4" (16.56m)

Длина палубы: 55' 6" (16.92m)

Ширина: 16' 8" (5.08m)

Макс. осадка: 5' 11" (1.80m)

Длина привального бруса: 62' 0"
(18.90m)

Скорость, вместимость и масса

Крейс. скорость: 9 Kts. (10 MPH)

Крейсерская скорость поворота: 12 Kts.

Водоизмещение: 110000 Pounds

Вместимость воды: 400 Gallons

Вместимость сточного бака: 110 Gallons Объем топливного бака: 1400 Gallons

Корпус и палуба

Материал корпуса: Fiberglass

Информация о двигателе

Двигатели: 1

Производитель: Cummins

Модель: QSL 9

Тип двигателя: Inboard

Тип топлива: Diesel

ПОДРОБНОЕ ОПИСАНИЕ

Salon

- Cabinetry throughout the yacht in Cherry w/ Mappa Burl counter tops
- Diamond Sea Glaze Series 250 Dutch door with dogs
- Leather upholstered U-shape settee w/ slide out extension filler for an extra berth
- Expandable Teak with ebony inlay dining/cocktail table w/ high-low assist
- Two Custom Teak chairs opposite the settee
- USB connection under the settee for laptop connection to GPS/ Navigation system
- Samsung 42" LED HD TV w/ wifi with TV lift in the stbd cabinetry
- Bose 2000 surround sound theater system and speakers
- Apple TV
- Sony BlueRay DVD player
- KVH HD7 Satellite system

Enter the enlarged, custom-designed salon via a Dutch Door from the cockpit or the steps from the pilot house. To port is a U-shaped settee that seats 8 comfortably for dinner using the opposite custom built chairs on the starboard side. An extendable hydraulic high-low cocktail/dining table is in front of the settee. The settee converts to a berth by sliding out the main part of the settee, dropping two hinged supporting posts, and inserting a filler. The underside of the settee contains a USB port connecting to the GPS systems to allow for navigation and planning on notebook computers from the comfort of the salon.

Across from the settee are two custom teak chairs framing an entertainment center, with glass front for infrared access. Directly behind the entertainment cabinet rising out of the mappa burl countertop is a 42" wifi connected LED HD TV, hidden when not in use. The TV accepts signals from its own wifi system, a HD over-the-air antenna on the mast, an Apple TV system, a BlueRay DVD or the KVH HD7 satellite system, all passing through a state of the art Bose theater audiovisual system with mini-speakers and a powerful hidden subwoofer. The system, which also feeds the TV in the master stateroom, also allows for the recording or watching of five separate channels simultaneously with its built-in, high capacity, DVR. Finally, there is a connected cherry wood stand for an iPod which feeds digital music to the ship-wide audio entertainment system (with control stations on the flybridge, in the cockpit, in the master stateroom and in the pilothouse).

Forward of the entertainment area is a set of large cabinets and drawers for storage, with a large entertainment counter that is perfect for buffet dinners and parties, which is directly adjacent to a custom-built bar display area with attractive glass-front doors and room for dozens of bottles of wine and other spirits.

Galley

- U shape galley to Port with granite countertops and raised bar
- Frigaboard keel-cooled refrigerator/freezer , efficient DC operation
- Force 10 gas range and oven w/ 4 burners
- GE microwave/convection oven w/ Exhaust fan and vent overboard
- Double bowl stainless steel sink w/ high neck extendable faucet
- Broan Trash compactor
- Cabinets and drawer storage throughout
- Additional Frigaboard keel cooled freezer located in the lazarette

The ship's U-shaped galley is just forward of the salon. A granite countertop and granite-topped bar defines its space. Unlike other Selenes with TVs mounted on the frontside of the galley bar, Blue Grotto's galley countertop offers plenty of room for the gourmet cook and plenty of hidden countertop storage for easy equipment access.

Galley equipment includes a Force 10 propane range and oven, GE Microwave/ convection oven, Broan compactor, and stainless steel Frigaboard keel-cooled refrigerator/freezer (large deep interior and efficient DC operation without any noise or heat). An exhaust fan integral to the microwave is vented overboard. A double stainless steel sink with a high-neck/extendible faucet is to port beneath a large opening window. There are a numerous storage lockers and drawers beneath the granite counter and overhead lockers on all three sides, integrating a wine glass storage rack.

Raised Pilothouse

RAISED PILOTHOUSE FEATURES

- L shape settee to port with leather upholstery and teak table
- Watch berth with leather upholstery behind the settee
- Stidd Helm adjustable helm chair w/ footrest (ultraleather upholstery)
- Custom teak and maple helm wheel
- Chart storage and drawers beneath the watch berth
- Raritan Icemaker located just forward of the stairs from the galley

RAISED PILOTHOUSE CONTROLS AND EQUIPMENT

- Garmin 5215 touchscreen GPS MAP chartplotter (2)
- Garmin GMR 404 4ft open array radar
- Garmin GDL 30A Sat weather/audio receiver
- Garmin GMI 10 NMEA multi- input displays (3)
- Garmin GSD -22 Blackbox sonar and transducer
- Simrad Autopilot (AP28, AC42, RC42, RF300, RPU160)
- Simrad WR20 wireless remote control for autopilot
- Simrad AI-50 AIS w/ independent display
- Echopilot 3D Color forward looking Sonar

- Airmar DT812BV Smart NMEA 2000 Sonar
- Airmar B164 -12-GAR 1kw transducer and temp sensor
- Airmar PB200 NMEA 2000 Ultrasonic weather station
- Standard Horizon Quantum GX5500S Radio (2)
- Standard Horizon RAM+ remote (2)
- Standard Horizon 240SW hailer horn and PA (2)
- Four station Polyplaner multi zone entertainment system(XM, Apple, 6-CD, AM/FM, router)
- Glendenning electronic engine controls (1 primary system and a complete back up system)
- Cummins Smartcraft engine display
- Sidepower bow and stern thruster controls (15HP each)
- KeyPower Stabilizer control (9' sq ft fins)
- KeyPower control for Hydrualic get home system
- Kahlenberg controls for dual air horn
- ACR 2742 CAT I Global Fix EPIRB
- Maretron Simnet NMEA 2000 Adapters (3)
- Speco waterproof camera in cockpit and engine room
- Cell amplifier and antenna

Forward and three steps up from the salon/galley area is the pilothouse. The pilothouse is also accessed from the decks via Dutch doors port and starboard, from the flybridge via aft steps and via the companionway stairs, which lead down to the accommodations and engine room. This exceptionally well equipped area is the nerve center of the boat. It also has its own HVAC system and air handler to ensure comfort in any weather.

Within the companionway down to the staterooms are louvered doors with cedar lined cabinets behind for storage, also containing the central vacuum system. In the companionway leading aft to the galley are the storage cabinets containing the remote controls for the davit, the windlass (with rode counter) and the thrusters and engine, the large capacity Raritan icemaker, and the touch-screen for monitoring and controlling the watermaker.

Aft and to port is a large L-shaped settee with a watch berth above and behind it and a table in front. Beneath the watch berth are multiple large chart drawers and storage compartments. Centered and forward is the main helm, a custom designed teak and maple. An oversized deluxe helm chair positions the captain with a sweeping 290 degree view and a comfortable reach to one of the most extensively equipped navigation centers on any yacht of this size.

An extensive list of equipment at the main helm including Glendinning electronic engine controls (primary system and complete back-up system), Cummins Smartcraft engine display, networked and touch-screen Garmin 5215 screens (2), Garmin Gmi 10 multifunction displays(2), Simrad AIS transponder (with additional multifunction screen), Simrad autopilot with handheld remote, video camera feeds from the engine room and cockpit (reverse “rear mirror” view), Airmar Ultrasonic weather station, multiple GPS-independent VHF radios, and an EchoPilot 3D color Forward Looking Sonar, in addition to a Garmin high-definition fish-finder/depth sounder and redundant Maretron depth and temperature transducer.

The networking of these weather, sonar, radar, AIS, autopilot and navigation systems allows for a very high degree of personalization of the displays (up to four on each of the large screens) providing for an optimized “situation awareness” for each situation presented. A single screen can display radar, MARPA radar target data, AIS target data, a chart display, sonar information, autopilot data and true or relative wind. The three additional customizable screens can then add even more information for the unique situation presented. Whether on an ocean transit across shipping lanes at 3:30 AM or a passage through the shoaling waters of the Eastern Intercoastal Waterway, you will always be confident of your awareness of the situation and hazards.

Additional displays and controls below the navigation panel include, double joystick controls for the SidePower 15 HP bow and stern thrusters, Glendinning electronic engine controls and back-up system, touch-screen digital controls for the KeyPower stabilizers (9 sq. ft. fins), joystick control for the KeyPower get home hydraulic system, actuator for the Kahlenberg dual horn system, additional remote windlass controls, windshield wiper controls (including intermittent operation and wash), and rudder angle indicator. An extensive array of panels are then below these controls for operation and monitoring of the multiple 12 volt converter systems, the extensive 24 volt system and the 110 and 220 AC electrical plants. These include monitoring systems for all five battery banks, a Mastervolt MACC monitor for battery bank percentage charge and time remaining, combiners for main and secondary banks, controls and monitors for the Northern Lights 20kW generator, and controls for shore power configurations. These systems were designed by the nationally renowned Taylor Marine Services and provide for the utmost in security and reliability.

In the starboard forward corner of the pilothouse, within easy reach of the captain’s chair is one of four controls for the PolyPlaner ship-wide entertainment system. From each of these stations (which double as intercoms) the user can select from AM, FM, iPod, iPhone, XM/Sirius satellite, or CD sources.

Master Stateroom

Upon descending the stairs from the pilothouse, passing the central vacuum storage on the right, and entering the companionway, on the port side is a conveniently located, full size, Bosch washer and Bosch drier (strategically located with easy access rear panels in the adjoining linen lockers in the master stateroom head).

A full-beam master stateroom suite is located under the pilothouse for maximum space and comfort at anchor or underway, as this is the quietest location on the vessel with the least wave noise. It also has the least motion. The queen-sized berth is centerline in the boat and is bathed in light from the six portholes of the space. A digital safe for security of valuables is concealed within the suite. The suite has its own hanging lockers, dressers, vanity, and a large separate and private head. The master head has a granite-topped counter with a wash basin, oversized Tecma toilet, and a large comfortable separate shower stall.

By removing the small master head of the standard Selene layout to the area forward of the

master stateroom, this design opens up a large area on the port side of the space where Blue Grotto has a custom bowed desk and seating area. This area is enhanced with multiple storage lockers that include a cell amplifier, networked printer, boat-wide cell-to-wifi system and the stateroom HVAC air handler.

VIP Stateroom

The VIP has a queen island berth and is located in the forward end of the vessel. Like the master, it has its own heating controls as well as a hatch/emergency exit overhead. Lockers, book shelves, and cabinetry symmetrically line the port and starboard sides of the stateroom. Large drawers beneath the centerline berth provide even more storage. Throughout all compartments, hanging lockers are solid cedar lined and self-illuminating.

Four portholes, provide light and ventilation. They are fitted with screens and storm covers.

The guest head is aft of the VIP stateroom and includes a basin, Tecma toilet, separate ventilation system and a full-size stall shower. Portholes over the basin and within the shower compartment provide ventilation and light.

VIP Head

The guest head is aft of the VIP stateroom and includes a basin, Tecma toilet, separate ventilation system and a full-size stall shower. Portholes over the basin and within the shower compartment provide ventilation and light.

Aft deck/ Cockpit

Using either of the side gates or the gate from the swim platform directly into the cockpit which, is particularly spacious. It can easily accommodate several chairs and a nice sized table for relaxing and entertaining.

A spiral staircase leads to the flybridge & boat deck for convenience and safety. Within which is a hanging locker and a smaller storage locker suitable for extra electrical cables, hoses and other deck equipment. Within the cockpit are shore power inlets (see "Electrical" below), a hot/cold freshwater shower, and a raw water bib for wash-downs.

The integral swim platform is full-width and has a swim ladder easily accessible from the water. "Staples" provide a sure grip and handhold when boarding/ deboarding the dink, a kayak, or when landing fish.

There is a remote helming unit which plugs in at the cockpit and the Portuguese bridge providing engine gear and throttle plus thruster controls to give up close and personal maneuvering capability in close quarters.

Two electric downriggers attach SS brackets in the cockpit. Alternatively, a spool holding 600' of line attaches for stern ties to the shore.

Lazarette

From the large cockpit hatch above or the watertight engine room door forward, access is gained to the lazarette, where several large storage lockers and collateral equipment and systems are located, including: 1000 amp-hour house and 460 amp-hour stern thruster battery banks (all new in 2015 LifeLine batteries with temperature sensors), Mastervolt 2500 inverter, built-in freezer with Frigoboat keel-cooled compressor and controls, Arid Bilge system for maintaining dry and odor-free bilges, high-pressure fresh water wash-down pump, manual dewatering system for each of four water-tight compartments, manual helm, Simrad autopilot hydraulics, controls for underwater lights, 15 HP SidePower stern thruster and cut-off controls and 450 gal/day Aqua Marine watermaker with ultraviolet antibacterial system and controls. The lazarette's cherry wood cabinetry and finished overhead make this an attractive, as well as functional, ship's space. From the large cockpit hatch above or the watertight engine room door forward, access is gained to the lazarette, where several large storage lockers and collateral equipment and systems are located, including: 1000 amp-hour house and 460 amp-hour stern thruster battery banks (all new in 2015 LifeLine batteries with temperature sensors), Mastervolt 2500 inverter, built-in freezer with Frigoboat keel-cooled compressor and controls, Arid Bilge system for maintaining dry and odor-free bilges, high-pressure fresh water wash-down pump, manual dewatering system for each of four water-tight compartments, manual helm, Simrad autopilot hydraulics, controls for underwater lights, 15 HP SidePower stern thruster and cut-off controls and 450 gal/day Aqua Marine watermaker with ultraviolet antibacterial system and controls. The lazarette's cherry wood cabinetry and finished overhead make this an attractive, as well as functional, ship's space.

Electronics and Navigation systems

Garmin GPS MAP 5215 touch screen chart plotters - Two in the pilothouse

Garmin GPS MAP 5212 touch screen chart plotter (Flybridge)

Garmin GMR404 4ft radar array with pedestal

Garmin GDL 30A satellite weather/audio receiver

Garmin GMI 10 NMEA multi-input displays (3)

Garmin GSD-22 blackbox sonar and transducer

Simrad autopilot (AP28, AC42, RC42, RF300, RPU160)

Simrad WR20 wireless remote control

Simrad AI-50 AIS with independent display

Airmar DT812BV Smart NMEA 2000 sonar

Airmar B164-12-GAR 1kW thru-hull sonar transducer and temp sensor

EchoPilot 3D Color Forward Looking Sonar

Airmar PB200 NMEA 2000 ultrasonic weather station

Standard Horizon Quantum GX5500S radio (2)

Standard Horizon RAM+ remote (2)

S/H 240SW hailer horn and PA (2)

Four station PolyPlanar multi-zone entertainment system (with XM, Apple, 6-CD, AM/FM, router)

ACR 2742 Cat I Globalfix EPIRB

Speco Ultra wide angle waterproof camera in ER

Speco reverse image waterproof camera in cockpit

Shakespeare SRA-40 antennae (4)

Maretron Simnet NMEA 2000 adapters (3)

Cell amplifier and antenna

Bose 2000 surround sound theater system

Samsung 42" LED wifi-enabled HD TV

Sony BluRay DVD

Apple TV

TV lift

KVH HD7 satellite tracking system

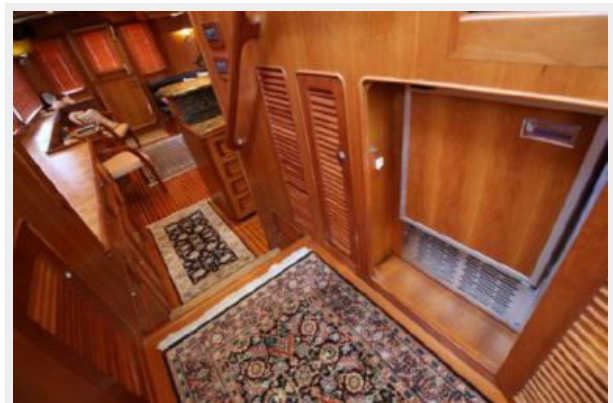
Исключения

При продаже яхты исключаются личные вещи владельца.

Отказ от ответственности

Компания предоставляет описание судна или яхты добросовестно, но не может гарантировать точность этой информации, а также не ручается за техническое состояние. Покупатель должен проинструктировать своих агентов или оценщиков исследовать представленную информацию более подробно, по собственному желанию. Продажа судна или яхты, изменение цены или снятие с продажи будет происходить без предварительного уведомления.

ФОТОГРАФИИ





КОНТАКТЫ

Андрей Шестаков (Andrey Shestakov) – ведущий яхтенный брокер отдела продаж яхт и судов компании Shestakov Yacht Sales Inc. Официальный представитель Shestakov Yacht Sales Inc. для русскоговорящих клиентов в центральном офисе компании в Майами/Форт Лодердейл/Флорида/США.

Контактная информация

Email: andrey@shestakovyachtsales.com

Web: shestakovyachtsales.com

Телефоны

Краснодарский край: **+7(918)465-66-44**

США, Майами, Флорида: **+1(954)274-4435**

Время работы

Понедельник – Суббота: **9:00 - 21:00**
EDT

Воскресенье: **Закрето**

Адрес



Harbour Towne Marina, 850 NE 3rd St,
STE 213, Dania, FL 33004