

MISS B — JARRETT BAY



Builder: JARRETT BAY

LOA: 36' 0" (10.97m)

Year Built: 1989

Beam: 14' 5" (4.39m)

Model: Sport Fisherman

Price: PRICE ON APPLICATION

Location: United States

Our experienced yacht broker, Andrey Shestakov, will help you choose and buy a yacht that best suits your needs **Miss B — JARRETT BAY** from our catalogue. Presently, at Shestakov Yacht Sales Inc., we have a wide variety of yachts available on our sale's list. We also work in close contact with all the big yacht manufacturers from all over the world.

If you would like to buy a yacht **Miss B — JARRETT BAY** or would like help answering any questions concerning purchasing, selling or chartering a yacht, please call **+1(954)274-4435**

TABLE OF CONTENTS

TABLE OF CONTENTS	2
SPECIFICATIONS	3
Overview	3
Basic Information	3
Dimensions	3
Speed, Capacities and Weight	3
Accommodations	3
Hull and Deck Information	3
Engine Information	4
DETAILED INFORMATION	5
Accommodations	5
Electronics	5
Electrical	5
Galley	6
Deck	6
Additional	6
Exclusions	7
Disclaimer	7
PHOTOS	8
CONTACTS	20
Contact details	20
Telephones	20
Office hours	20
Address	20

SPECIFICATIONS

Overview

Built by Jarrett Bay in 1989, Miss B is a 36' Flybridge Sportfishermen that is ready to go. Repowered in 2004 with twin Cummins 370hp diesels. With a cruise speed of 24 knots burning less than 25 gallons per hour she is hard to beat. She also offers a large functional interior layout including a galley w/ refrigerator, microwave, a full size bunk space and enclosed head. Seller has decided to let her go and has priced her to sell quick. Call for full specs and details.

Basic Information

Category: Sport Fisherman

Sub Category: Convertible

Model Year: 1989

Year Built: 1989

Country: United States

Dimensions

LOA: 36' 0" (10.97m)

Beam: 14' 5" (4.39m)

Speed, Capacities and Weight

Displacement: 26000 Pounds

Water Capacity: 50 Gallons

Fuel Capacity: 200 Gallons

Accommodations

Total Cabins: 1

Hull and Deck Information

Hull Material: Composite

Engine Information

Engines: 2

Manufacturer: Cummins

Model: 6BTA5.9M

Engine Type: Inboard

Fuel Type: Diesel

DETAILED INFORMATION

Accommodations

As you step on board you will find yourself in a very spacious cockpit for a boat of this size. Her cockpit is large enough for a Pompanette Fighting Chair, Transom Fish Box, Built in Tackle Rigging Station and still has enough room for the crew to get in on the action.

Moving into the salon there you will find a very roomy and comfortable area complete with sleeper sofa (to port), flat screen TV and sitting area (to starboard). Continuing forward down 2 steps is her galley. Her galley offers a microwave, refrigerator, single burner cook top, solid surface counter tops and a recessed sink for easy clean-up. Continue down 3 steps is her full sized bunk to starboard with a fully enclosed private head in the forward area just past the bunk space.

Electronics

- Garmin 3210 Color GPS / Plotter / Depth Finder
- Garmin 36 Mile Radar
- Icom M422 VHF Radio
- Uniden Solara VHF Radio
- External VHF Radio Speaker
- Robertson Autopilot
- Kenwood AM /FM /CD Stereo System with 4 Speakers
- Magnavox DVD / CD Player
- Insignia Flat Screen TV
- Satfind 406 Epirb

Electrical

- Westerbeke 6 KW Generator w/ Remote Start in Salon
- Reverse Cycle Heating and Air Conditioning System
- (2) 30 AMP Shore Power
- (2) 30 AMP Shore Power Cord
- 120 V Electrical System
- 12 V Electrical System
- (3) Battery
- Battery Selector Switch
- Truecharge 2 Battery Charger
- Spreader Lights
- Recessed Overhead Lighting thru-out Interior

Galley

- Solid Surface Counters
- Under Counter Recessed Sink
- Hot Water Available at Sink
- Microwave
- Refrigerator
- Cabinet Storage Below Counters
- Storage Drawers
- Teak and Holly Sole
- Single Burner Electric Cook Top

Deck

- Fiberglass Hard Top
- Stainless Hard Top Legs and Supports
- 5 Stainless Rod Holders on Bridge Deck Belly Band
- Port and Starboard Bench Seats on Bridge Deck w/ Storage Underneath
- Cushions for Bench Seats
- Single Helm Chair w/ Cover
- Storage Area Forward of Helm
- Pop-Up Electronics Console
- Single Lever Engine Controls
- 3 Sided Spray Enclosure
- Bow Pulpit w/ Anchor Chute
- Maxwell Anchor Windlass w/ Bow and Helm Station Controls
- Double Spreader Rupp Outriggers
- Canvass Windshield Cover
- Pompanette Fighting Chair w/ Cover
- Teak Footrest for Fighting Chair
- Transom Fish Box
- Forward Cockpit Port Side Tackle Cabinet
- Under Gunnel Rod / Gaff Storage
- Armstrong Boarding Ladder
- Raw Water Wash Down
- Fresh Water Wash Down
- Trim Tabs
- Stainless Ladder for Bridge Access
- Sliding Teak Salon Doors
- Spreader Lights

Additional

- Dripless Shaft Logs
- Racor Fuel Filters
- Bronze Sea Strainers
- Engine and Generator Access thru Salon Floor
- (3) Deck Hatch for Rudder and Bilge Access
- Stern Cleat Hase Pipe Mounted in Covering Boards
- Digital TV Antenna
- Teak and Holly Sole in Galley and Bunk Area Sole

Exclusions

Owner's personal belongings.

Disclaimer

The Company offers the details of this vessel or yacht in good faith but cannot guarantee or warrant the accuracy of this information nor warrant the condition of the vessel. A buyer should instruct his representatives, agents, or his surveyors, to investigate such details as the buyer desires validated. This vessel or yacht is offered subject to prior sale, price change, or withdrawal without notice.

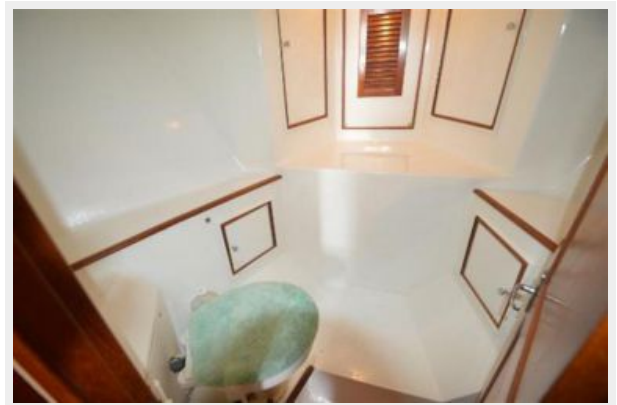
PHOTOS



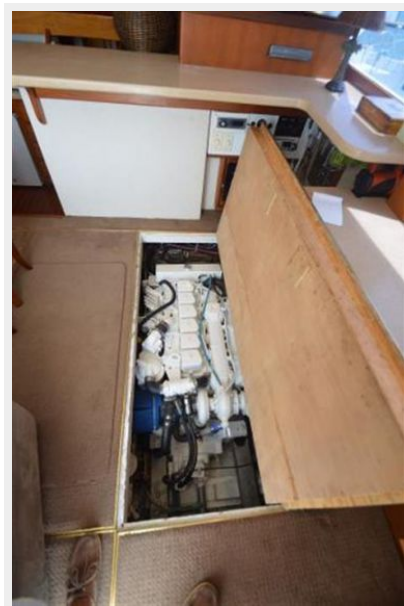




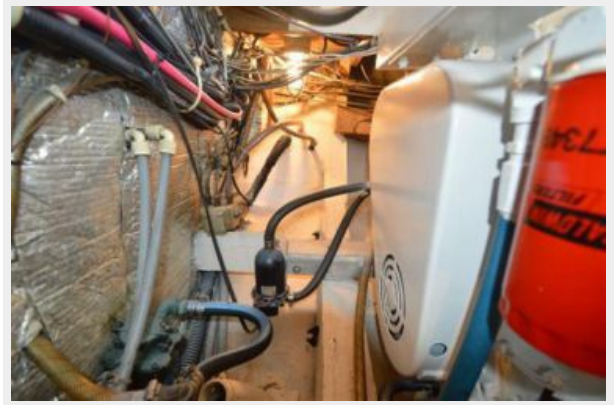


















CONTACTS

Andrey Shestakov, leading yacht broker of the sales department of Shestakov Yacht Sales Inc. Shestakov Yacht Sales Inc., the official representative of the Miami/Fort Lauderdale FL headquarters.

Contact details

Email: andrey@shestakovyachtsales.com

Web: shestakovyachtsales.com/en/

Telephones

USA: +1(954)274-4435

Office hours

Monday – Saturday: **9:00 - 21:00** EDT

Sunday: **closed**

Address



Harbour Towne Marina, 850 NE 3rd St,
STE 213, Dania, FL 33004