

## NO NAME — SUNSEEKER



**Builder:** SUNSEEKER

**LOA:** 74' 0" (22.56m)

**Year Built:** 2001

**Max Draft:** 5' 0" (1.52m)

**Model:** Cruiser

**Price:** PRICE ON APPLICATION

**Location:** United States

Our experienced yacht broker, Andrey Shestakov, will help you choose and buy a yacht that best suits your needs **No Name — SUNSEEKER** from our catalogue. Presently, at Shestakov Yacht Sales Inc., we have a wide variety of yachts available on our sale's list. We also work in close contact with all the big yacht manufacturers from all over the world.

If you would like to buy a yacht **No Name — SUNSEEKER** or would like help answering any questions concerning purchasing, selling or chartering a yacht, please call **+1(954)274-4435**

---

# TABLE OF CONTENTS

---

TABLE OF CONTENTS	2
SPECIFICATIONS	3
Overview	3
Basic Information	3
Dimensions	3
Speed, Capacities and Weight	3
Accommodations	4
Hull and Deck Information	4
Engine Information	4
DETAILED INFORMATION	5
Accommodations	5
Mechanical	5
Navigation Equipment	6
Electrical Equipment	6
Deck Equipment	7
Exclusions	7
Disclaimer	7
PHOTOS	9
CONTACTS	15
Contact details	15
Telephones	15
Office hours	15
Address	15

---

# SPECIFICATIONS

---

## Overview

---

The Manhattan 74 has been declared one of the best designed yachts in the world. It is especially spacious and well-equipped. A very comfortable salon welcomes you from the aft deck. Up two steps, just forward of the salon is the galley to starboard and the dining area to port. A bird's eye view of the world is yours through the very stylishly designed windows and forward windscreen. To starboard is the well equipped helm station. A stairway giving access to the forward guest cabins is center. The master stateroom is accessed via stairs from the salon. The two berth crew cabin can be entered from the transom. A stairway from the cockpit leads to the fly bridge. This model can be owner operated very successfully.

## Basic Information

---

**Category:** Cruiser

**Sub Category:** Sport Cruiser

**Model Year:** 2001

**Year Built:** 2001

**Country:** United States

**Vessel Top:** Bimini Top

**Fly Bridge:** Yes

## Dimensions

---

**LOA:** 74' 0" (22.56m)

**LWL:** 58' 5" (17.81m)

**Max Draft:** 5' 0" (1.52m)

## Speed, Capacities and Weight

---

**Displacement:** 41500 Pounds

**Fuel Capacity:** 1321 Gallons

---

## Accommodations

---

**Total Cabins:** 4

**Total Heads:** 3

**Crew Sleeps:** 2

**Crew Heads:** 1

---

## Hull and Deck Information

---

**Hull Material:** Fiberglass

---

## Engine Information

---

**Engines:** 2

**Manufacturer:** MAN

**Engine Type:** Inboard

**Fuel Type:** Diesel

---

# DETAILED INFORMATION

---

## Accommodations

---

There are 4 guest staterooms (master, VIP and 2 doubles) and 3 guest heads. There is a crew cabin aft with 2 berths and a head and shower. The main salon is very spacious and comfortably appointed with mirror image settees, built-in cabinetry, a full entertainment system and large side windows with window treatments. Aft is access to the aft deck through a sliding door and at the forward end of the salon is the raised galley and dining area. This arrangement never takes the cook away from the action and it is of true benefit for large parties. The master stateroom is midship and privately accessed through the salon. It has a king bed, a settee and vanity, built-in drawer storage, and a large cedar-lined closet with mirrored doors. There are opening ports with screens and curtains, as well as overhead and reading lighting. This suite has its own head with shower, wash basin and vanity. Completely forward is a VIP stateroom with a queen bed, built-in drawer storage, overhead lockers, (2) wardrobes with mirrored doors, and opening port lights with screens and curtains. 24 volt lighting is provided in the form of overhead treatment and reading lamps. The en suite head has a shower with acrylic door and teak grating, and wash basin. A TV/VCR/CD player is also included. There are mirror image twin berth staterooms (port & starboard) that each have built-in drawer storage, a wardrobe and bedside table. Opening port lights have screens and curtains. They are equipped with 24 volt overhead and reading lighting and a TV/VCR/CD player combo. These staterooms share a head with shower and wash basin. The privately accessed crew cabin aft is equipped with (2) twin sized berths, a hanging locker, a mirrored vanity unit and a head with shower and wash basin. Overhead and reading lighting, air conditioning, opening port light with screen, refrigerator and satellite plumbed TV/VCR are also provided.

## Mechanical

---

- Marine Air 72,000 BTU A/C (6 air handling units)
- Soundproofing throughout engine room
- Fuel tanks with electric sending unit
- Separ fuel filters/water separators
- Remote oil filters
- Racor filters
- Hydraulic steering
- ZFBW190 gear boxes
- Sealand 24V sewage system (3 vacuum heads, 1 manual)
- 5-blade bronze propellers
- Automatic fire extinguisher
- Engine room & forward bilge flood alarms
- (2) Automatic bilge pumps
- (2) Automatic flood pumps

- (2) 50 cm 240 volt extractor fans
- Manual bilge pump
- Floset 24V fresh water system
- Water heater
- HRO watermaker@600 gpd
- Access from crew quarters

## Navigation Equipment

---

### Interior Station:

- Guest search/flood light
- Furuno 1942 Mark II 64-mile radar
- Northstar 961XD DGPS Chart System
- Robertson AP20 autopilot
- Ritchie compass
- Bow thruster
- Raytheon ST60 speed indicator
- Raytheon ST60 depth sounder
- ICOM IC-M402 VHF radio
- KVH Tracphone 50
- Mathers controls
- VDO gauges
- Custom Roccaro seat
- Internal Panasonic telephone system (1 line, 6 extensions) w/intercom

### Flybridge:

- Furuno Mark II 64-mile radar
- Robertson AP20 autopilot
- Raytheon ST multi speed/depth
- Northstar 961XD DGPS Chart System
- ICOM IC-M402 VHF radio
- Sound Link stereo with Alpine speakers
- Mathers controls
- Bow thruster controls
- VDO gauges
- Guest spotlight

## Electrical Equipment

---

- 19 kW Kohler generator 1800 rpm
- 8 kW Kohler generator 1500 rpm

- Glendenning Cablemaster
- 110/240 V AC dockside connection
- Galvanic isolator
- 12/24 V DC system w/full circuit breaker protection
- (6) Engine batteries 24 V circuit
- Alternator split charging system
- Remote battery charger for 12V circuits
- 110V AC sockets throughout boat
- 24V hand light and cable
- Phase Three Smart Charger

---

## Deck Equipment

---

- Besenzoni 3-stage electric hydraulic passarelle (concealed when stowed)
- Hydraulic swim platform with tender chocks
- All stainless steel fittings
- Stainless steel guard and grab rails
- (8) Deck cleats
- Bow roller with anchor stop
- Bow plate
- Delta plow anchor with 60m galvanized chain
- Simpson electric windlass w/capstan
- (2) Simpson Lawrence capstans (aft)
- Marquipt 6-step aluminum boarding ladder
- Cockpit controls
- Chain locker / fender stowage
- Pantographing windshield wipers / washers 24V
- IMCO navigation lights
- Ensign staff and socket
- Fenders and dock lines
- Sun pads on bow lounge area
- Icemaker, table and built-in settee on aft deck
- Teak aft deck, swim platform and walkaround

---

## Exclusions

---

Owner's personal belongings.

---

## Disclaimer

---

The Company offers the details of this vessel or yacht in good faith but cannot guarantee or warrant the accuracy of this information nor warrant the condition of the vessel. A buyer should

instruct his representatives, agents, or his surveyors, to investigate such details as the buyer desires validated. This vessel or yacht is offered subject to prior sale, price change, or withdrawal without notice.



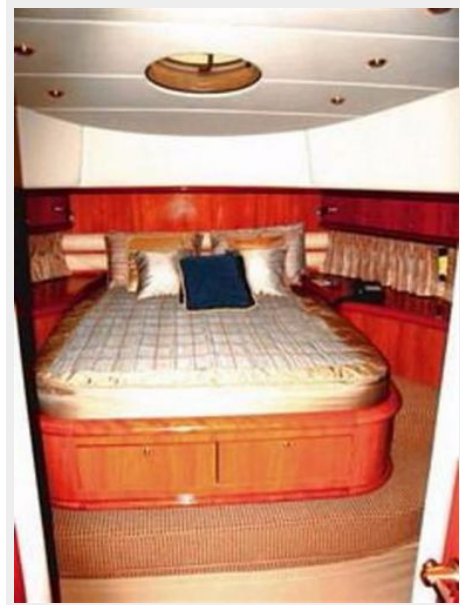
# PHOTOS

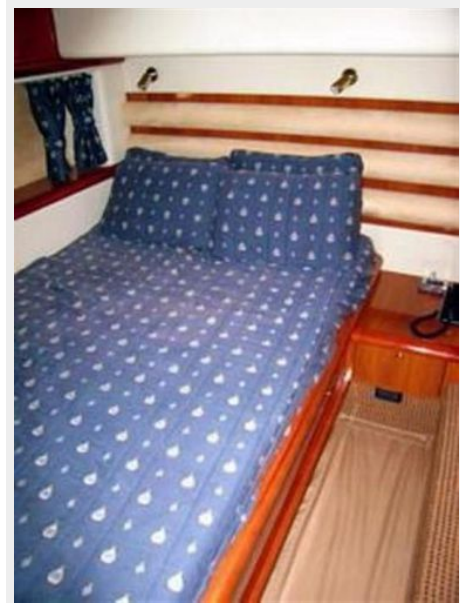












---

# CONTACTS

---

Andrey Shestakov, leading yacht broker of the sales department of Shestakov Yacht Sales Inc. Shestakov Yacht Sales Inc., the official representative of the Miami/Fort Lauderdale FL headquarters.

---

## Contact details

---

Email: [andrey@shestakovyachtsales.com](mailto:andrey@shestakovyachtsales.com)

Web: [shestakovyachtsales.com/en/](http://shestakovyachtsales.com/en/)

---

## Telephones

---

USA: +1(954)274-4435

---

## Office hours

---

Monday – Saturday: **9:00 - 21:00** EDT

Sunday: **closed**

---

## Address

---



Harbour Towne Marina, 850 NE 3rd St,  
STE 213, Dania, FL 33004