

GATORBITES — MAXUM



Судостроитель: MAXUM

Длина общая: 41' 0" (12.50m)

Год постройки: 2000

Модель: Моторная яхта

Цена: ЦЕНА ЯХТЫ ПО ЗАПРОСУ

Местонахождение: United States

Купить **GATORBITES — MAXUM** а также выбрать подходящую вам яхту из нашего каталога яхт вам поможет опытный яхтенный брокер Андрей Шестаков. На сегодняшний день компания **Shestakov Yacht Sales Inc.** имеет большое количество яхт в собственном списке продаж, а также тесно сотрудничает со всеми крупными яхтенными производителями по всему миру.

Для того чтобы купить яхту **GATORBITES — MAXUM** а также проконсультироваться по любому вопросу связанному с покупкой, продажей, чартером яхт позвоните по телефону **+7(918)465-66-44**.

ОГЛАВЛЕНИЕ

ОГЛАВЛЕНИЕ	2
ХАРАКТЕРИСТИКИ	5
Обзор	5
Основная информация	5
Размеры	5
Размещение	5
Корпус и палуба	5
Информация о двигателе	6
ПОДРОБНОЕ ОПИСАНИЕ	7
Manufacturer Provided Description	7
Accommodations	7
Galley	7
Main Cabin	8
Master Stateroom - Aft	8
Guest Stateroom - Forward	8
Deck & Hull	8
Navigation & Electronics	9
Electrical Equipment	9
Mechanical	10
Исключения	10
Отказ от ответственности	10
ФОТОГРАФИИ	11
Helm with full instrumentation	11
Main Cabin - Salon, Dinette, Galley	11
Skylight in Aft Deck Hardtop	11
Aft Deck with Wet Bar, Sink, Fridge	11
Eisenglass enclosed Aft Deck	11
Aluminum framed venturi windscreen	11

Flybridge Captain & Passenger Seating	12
Raymarine C80	12
Forward Facing Flybridge Seating	12
Flybridge Seating	12
Helm	12
Radar Arch with Raydome	12
Forward Deck	13
Portside Dinette in Salon	13
Starboard L-Settee and Galley	13
Salon forward to port	13
Salon aft to starboard	13
Entertainment Center	13
JVC Entertainment Center	14
TV Cabinet	14
Galley - starboard	14
Guest Stateroom	14
Guest Island Berth to port	14
Guest SR to starboard	14
Guest ensuite Head entrance	15
Guest/Day Head and Shower	15
Passageway to aft MSR	15
Master Stateroom, ensuite Vanity with Sink	15
MSR ensuite Shower	16
Separate Head & Shower - doors open	16
MSR ensuite Head	16
Port Side Deck from Bow to Aft	16
Starboard Side Deck to Bow	17
Ground Tackle	17
Molded curved Staircase to large Swim Platform, from Aft Deck	17

Spare Prop Storage under steps from Galley to Salon	17
Enclosed Genset	17
Forward view of Engine Room	17
Port Engine	18
Starboard Engine	18
Water Heater	18
Floorplan	18
Running Gear	18
Starboard profile - hauled out	18
Bow profile	19
Port Bow profile	19
Stern view	19
КОНТАКТЫ	20
Контактная информация	20
Телефоны	20
Время работы	20
Адрес	20

ХАРАКТЕРИСТИКИ

Обзор

Designed and built by the Maxum Design Group. Solidly built and perfectly set up, the 4100 SCA offers exceptional quality and value. Attention to detail is the hallmark of this beautifully designed, spacious cruiser. This is a very comfortable vessel with excellent accommodations, superb cruising characteristics. It would also make a wonderful live-aboard. From the moment you board the vessel, a spacious aft deck welcomes all, and begs to entertain your guests. Accessed via the integrated stairs from the large swim platform, the aft deck boasts ample room for seating guests, an integrated wet bar with ice maker, solid wing doors and screened enclosure. The helm bridge offers comfortable seating for seven and a clear 360-degree view for the Captain.

Основная информация

Тип судна: Моторная яхта

Подкатегория: Flybridge

Модельный год: 2000

Год постройки: 2000

Страна: United States

Открытая палуба мостика: Да

Размеры

Длина общая: 41' 0" (12.50m)

Размещение

Всего кают: 2

Всего коек: 2

Спальные места: 6

Всего ком. состава: 2

Корпус и палуба

Материал корпуса: Fiberglass

Информация о двигателе

Двигатели: 2

Производитель: Cummins

Модель: 6BTA 5.9

Тип двигателя: Inboard

Тип топлива: Diesel

ПОДРОБНОЕ ОПИСАНИЕ

Manufacturer Provided Description

The Maxum 4100 SCA is a yacht with sweeping curves, a soaring presence, and plenty of space for relaxing and entertaining. A snap-in sunpad with headrests on the forward deck creates a sprawling sunlounge, and the hardtop covered aft deck offers space for entertaining in the breeze. A four-person bench seat treats guests to the captain's view protected by an aluminum framed venturi windscreen. Molded fiberglass stairs and stainless railing provide easy and safe access to the flybridge. The helm offers full instrumentation, a Danforth compass, top-mount dual engine controls, and an adjustable bench seat. The grand salon of the Maxum 4100 SCA is filled with rich appointments and practical amenities. The gourmet galley features double stainless steel sinks, a microwave - convection oven, and a built-in coffee maker. Queen-sized berths and complete heads with showers grace both the owner's stateroom and guest quarters. The aft cabin features a queen-size island berth, with two drawers, stowage under, and illuminated hanging lockers. The forward stateroom has overhead and reading lights, storage shelves, an illuminated locker, and an entertainment niche.

Accommodations

Very spacious yacht with incredible headroom throughout! Two staterooms, Two heads, both with separate shower stalls. Master stateroom is full beam aft with walk-around island berth, ensuite vanity, private Head with vacuflush porcelain toilet, and separate shower stall. TV located in MSR behind cabinet. Guest Stateroom is forward with centerline berth easily accessed on 3 sides. Forward head also has a separate curved clear shower stall. Both staterooms have lots of storage.

Salon has TV/entertainment center to port, L-shaped settee to starboard. Forward is Dinette to port and Galley to starboard. Cherry wood interior. Carpets throughout. Windows have canvas outside covers.

Galley

Sunken galley to allow physical separation from Salon without compromising visual separation.

- Corian countertops
- Double stainless steel sink
- Norcold upright refrigerator/freezer 110v/12v DC
- Origo (3) burner electric stove
- Sharp Carousel microwave oven
- Cupboards and drawers for storage
- Hardwood flooring

- Dry storage in sole

Main Cabin

Silhouette blinds with and soft goods throughout. Both heads have stall shower and Vacu-Flush head system. Vessel design allows central vacuum system into those hard-to-reach areas.

- L-lounge to starboard in Salon
- Galley forward to starboard (4) steps down from Salon
- Dinette across from Galley to port
- Reverse cycle Marine Air air-conditioner
- Central Vacuum Cleaning System

Master Stateroom - Aft

Master aft with island queen berth and ensuite head, offering plenty of drawer and locker storage.

- Ensuite Head with separate Vacu-Flush toilet
- Separate stall shower compartment
- Separate vanity area
- Closet, shelf, drawer storage space

Guest Stateroom - Forward

Guest cabin forward with island queen berth and ample storage with ensuite head which also serves as day head.

- Ensuite Head with Vacu-Flush toilet, stall shower compartment, vanity
- Day Head entranceway from passageway opposite Galley

Deck & Hull

Large flybridge with bimini top and full Eisenglass enclosure added new in June 2015. Bench seat forward of helm and bench seat for captain and companions. Well laid-out helm with all the necessary electronics.

- Molded-in swim platform with molded steps to aft deck, and swim ladder
- 50AMP shore power service and TV/phone inlet in storage compartment at platform
- Fresh water inlet and hot/cold shower at platform
- (2) 4-blade propellers
- Bennett trim tabs

- Underwater exhaust
- Stainless Steel bow rail
- Bow Hatch
- Hard fiberglass top over aft deck with down lighting and full Eisenglass enclosure
- Bimini covered flybridge with full Eisenglass enclosure
- Hard fiberglass wing doors access wide walkaround sidedecks from aft deck
- Forward windshield with protective sun covers
- Outdoor carpet on aft deck and flybridge
- Tinted salon windows
- Large escape hatch from master stateroom
- Simpson Lawrence windlass system with foot controls and helm controls
- Danforth anchor

Navigation & Electronics

- Sea Star tilt steering wheel
- Danforth Compass
- Spotlight
- (3) bilge pumps
- Fuel transfer pumps
- Battery Parallel
- Raymarine C80 Radar
- Simrad Robertson AP11 Autopilot
- Standard Horizon VHF Radio
- Kidde Fire Control System
- JVC RX-558V Stereo Receiver
- JVC XL-F2158 CD Changer
- Clarion Speakers
- Tankwatch holding tank monitor
- Water heater

Electrical Equipment

- 12V Horn
- Remote Spotlight
- Air Conditioning/Heat
- Windlass
- Central Vacuum System
- 3-Batteries w/Switches
- 12V Navigation Lights
- 110V Outlets in Cabin & Cockpit
- Hot Water Heater
- 8.0KW Generator
- Battery Charger
- Engine Compartment Lights

Mechanical

- Air Conditioning - Reverse Cycle 2-Zone
- Bilge Blower(s)
- Bilge Pump(s)
- Bridge Controls
- Engine Alarm
- Emergency Engine Stop
- Fire Extinguishing System
- Fresh Water Cooling System
- Fuel Filters
- Fuel Shut Off Valve - Engines
- VacuFlush
- Trim Tabs

Исключения

При продаже яхты исключаются личные вещи владельца.

Отказ от ответственности

Компания предоставляет описание судна или яхты добросовестно, но не может гарантировать точность этой информации, а также не ручается за техническое состояние. Покупатель должен проинструктировать своих агентов или оценщиков исследовать представленную информацию более подробно, по собственному желанию. Продажа судна или яхты, изменение цены или снятие с продажи будет происходить без предварительного уведомления.

ФОТОГРАФИИ

Helm with full instrumentation



Main Cabin - Salon, Dinette, Galley



Skylight in Aft Deck Hardtop



Aft Deck with Wet Bar, Sink, Fridge



Eisenglass enclosed Aft Deck



Aluminum framed venturi windscreen



Flybridge Captain & Passenger Seating



Raymarine C80



Forward Facing Flybridge Seating



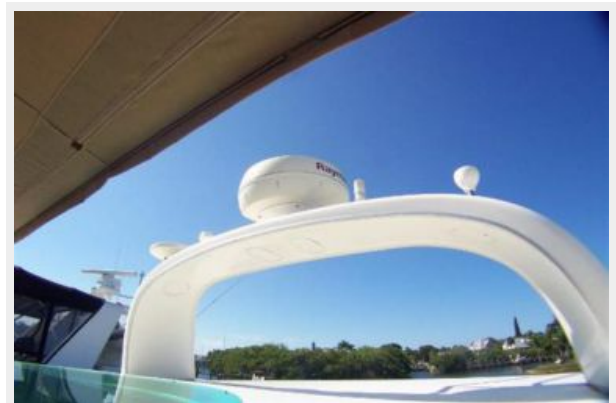
Flybridge Seating



Helm



Radar Arch with Raydome



Forward Deck



Portside Dinette in Salon



Starboard L-Settee and Galley



Salon forward to port



Salon aft to starboard



Entertainment Center



JVC Entertainment Center

TV Cabinet



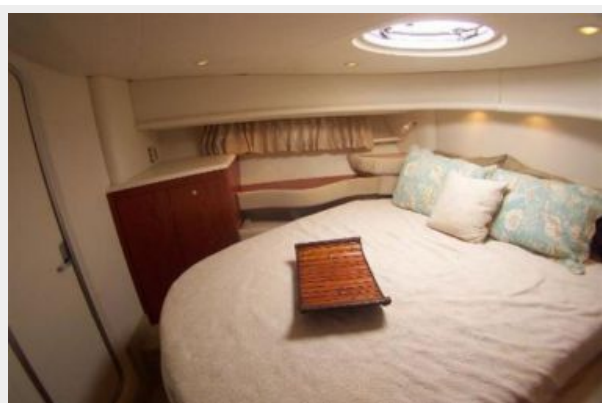
Galley - starboard



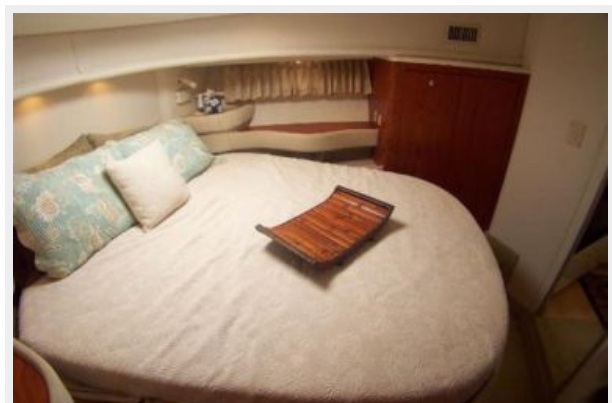
Guest Stateroom



Guest Island Berth to port



Guest SR to starboard



Guest ensuite Head entrance



Guest/Day Head and Shower



Passageway to aft MSR



Master Stateroom, ensuite Vanity with Sink

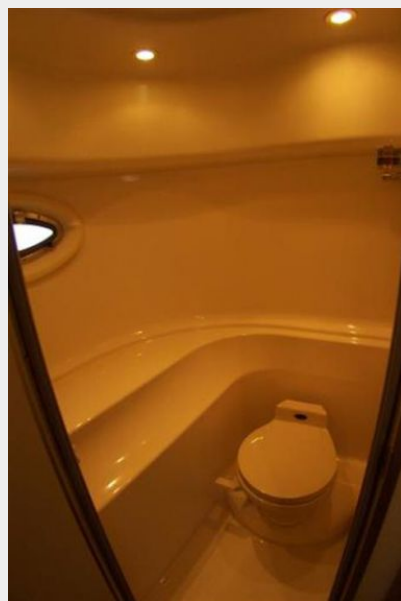


MSR ensuite Shower

Separate Head & Shower - doors open



MSR ensuite Head



Port Side Deck from Bow to Aft



Starboard Side Deck to Bow



Ground Tackle



Molded curved Staircase to large Swim Platform, from Aft Deck



Spare Prop Storage under steps from Galley to Salon



Enclosed Genset



Forward view of Engine Room



Port Engine



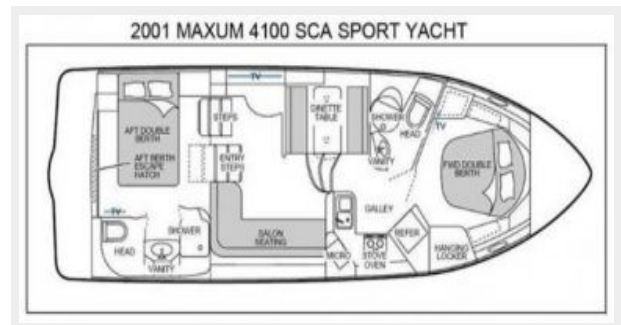
Starboard Engine



Water Heater



Floorplan



Starboard profile - hauled out



Running Gear



Bow profile



Port Bow profile



Stern view



КОНТАКТЫ

Андрей Шестаков (Andrey Shestakov) – ведущий яхтенный брокер отдела продаж яхт и судов компании Shestakov Yacht Sales Inc. Официальный представитель Shestakov Yacht Sales Inc. для русскоговорящих клиентов в центральном офисе компании в Майами/Форт Лодердейл/Флорида/США.

Контактная информация

Email: andrey@shestakovyachtsales.com

Web: shestakovyachtsales.com

Телефоны

Краснодарский край: **+7(918)465-66-44**

США, Майами, Флорида: **+1(954)274-4435**

Время работы

Понедельник – Суббота: **9:00 - 21:00**
EDT

Воскресенье: **Закрито**

Адрес



Harbour Towne Marina, 850 NE 3rd St,
STE 213, Dania, FL 33004