

KNOT'TY BOAT — PACIFIC TRAWLERS



Судостроитель: PACIFIC TRAWLERS

Год постройки: 1999

Модель: Траулер

Цена: ЦЕНА ЯХТЫ ПО ЗАПРОСУ

Местонахождение: United States

Длина общая: 37' 0" (11.28m)

Ширина: 13' 3" (4.04m)

Мин. осадка: 4' 4" (1.32m)

Макс. осадка: 4' 4" (1.32m)

Крейс. скорость: 8 Kts. (9 MPH)

Макс. скорость: 10 Kts. (12 MPH)

Купить Knot'ty Boat — PACIFIC TRAWLERS а также выбрать подходящую вам яхту из нашего каталога яхт вам поможет опытный яхтенный брокер Андрей Шестаков. На сегодняшний день компания Shestakov Yacht Sales Inc. имеет большое количество яхт в собственном списке продаж, а также тесно сотрудничает со всеми крупными яхтенными производителями по всему миру.

Для того чтобы купить яхту Knot'ty Boat — PACIFIC TRAWLERS а также проконсультироваться по любому вопросу связанному с покупкой, продажей, чартером яхт позвоните по телефону **+7(918)465-66-44**.

ОГЛАВЛЕНИЕ

ОГЛАВЛЕНИЕ	2
ХАРАКТЕРИСТИКИ	5
Обзор	5
Основная информация	5
Размеры	5
Скорость, вместимость и масса	5
Размещение	5
Корпус и палуба	6
Информация о двигателе	6
ПОДРОБНОЕ ОПИСАНИЕ	7
37' Pacific Trawler Overview	7
37' Pacific Trawler Vessel Walkthrough	7
37' Pacific Trawler Accommodations	7
37' Pacific Trawler Salon	7
37' Pacific Trawler Galley	7
37' Pacific Trawler Stateroom	8
37' Pacific Trawler Pilothouse	8
37' Pacific Trawler Aftdeck	8
37' Pacific Trawler Audio/Visual Equipment	8
37' Pacific Trawler Electronics	8
37' Pacific Trawler Electrical System	8
37' Pacific Trawler Engine/Mechanical Equipment	9
37' Pacific Trawler Deck Equipment	9
37' Pacific Trawler Tender	10
37' Pacific Trawler Safety and Fire Protection	10
37' Pacific Trawler Exclusions	10
37' Pacific Trawler Disclaimer	10
Исключения	11

Отказ от ответственности	11
ФОТОГРАФИИ	12
37' Pacific Trawler port aft profile	12
37' Pacific Trawler starboard forward profile	12
37' Pacific Trawler anchor windlass	12
37' Pacific Trawler starboard aft profile	12
37' Pacific Trawler port side deck	13
37' Pacific Trawler foredeck aft	13
37' Pacific Trawler starboard side deck	13
37' Pacific Trawler aftdeck	13
37' Pacific Trawler aftdeck port	14
37' Pacific Trawler aftdeck starboard	14
37' Pacific Trawler lazarette access	14
37' Pacific Trawler swimplatform	14
37' Pacific Trawler salon forward	14
37' Pacific Trawler salon aft	14
37' Pacific Trawler salon port	15
37' Pacific Trawler salon starboard	15
37' Pacific Trawler salon aft	15
37' Pacific Trawler galley photo1	15
37' Pacific Trawler galley photo2	15
37' Pacific Trawler galley photo3	15
37' Pacific Trawler head	16
37' Pacific Trawler shower	16
37' Pacific Trawler pilothouse	16
37' Pacific Trawler pilothouse port	16
37' Pacific Trawler pilothouse helm	17
37' Pacific Trawler pilothouse starboard	17
37' Pacific Trawler pilothouse electronics	17

37' Pacific Trawler pilothouse seating	17
37' Pacific Trawler stateroom	17
37' Pacific Trawler stateroom port	17
37' Pacific Trawler stateroom starboard	18
37' Pacific Trawler engine room access	18
37' Pacific Trawler main engine	18
37' Pacific Trawler Racor fuel filters	18
37' Pacific Trawler oil change system	18
37' Pacific Trawler water heater	18
37' Pacific Trawler generator soundbox	19
37' Pacific Trawler generator	19
37' Pacific Trawler battery charger	19
37' Pacific Trawler inverter	19
КОНТАКТЫ	20
Контактная информация	20
Телефоны	20
Время работы	20
Адрес	20

ХАРАКТЕРИСТИКИ

Обзор

Knot'ty Boat is a 1999 37' Pacific Trawlers pilothouse trawler. She offers a raised pilothouse design, single, fuel efficient 130 hp Lugger main engine, 6 kW Northern Lights generator, bowthruster, covered aftdeck and a spacious and comfortable interior. She would be a perfect Great Loop cruiser with her fuel efficiency, low profile and shallow draft.

Основная информация

Тип судна: Траулер	Подкатегория: Raised Pilothouse
Модельный год: 1999	Год постройки: 1999
Страна: United States	Верх: Hardtop

Размеры

Длина общая: 37' 0" (11.28m)	Длина по ватерлинии: 34' 2" (10.41m)
Ширина: 13' 3" (4.04m)	Мин. осадка: 4' 4" (1.32m)
Макс. осадка: 4' 4" (1.32m)	Трапы: 11' 5" (3.48m)

Скорость, вместимость и масса

Крейс. скорость: 8 Kts. (9 MPH)	Макс. скорость: 10 Kts. (12 MPH)
Водоизмещение: 24000 Pounds	Вместимость воды: 200 Gallons
Вместимость сточного бака: 100 Gallons	Объем топливного бака: 396 Gallons

Размещение

Всего кают: 1	Всего коек: 3
Спальные места: 5	Всего ком. состава: 1

Корпус и палуба

Материал корпуса: Fiberglass

Материал палубы: Composite Fiberglass

Информация о двигателе

Двигатели: 1

Производитель: Luger

Модель: L668D

Тип двигателя: Inboard

Тип топлива: Diesel

ПОДРОБНОЕ ОПИСАНИЕ

37' Pacific Trawler Overview

Knot'ty Boat is a 1999 37' Pacific Trawlers pilothouse trawler. She offers a raised pilothouse design, single, fuel efficient 130 hp Lugger main engine, 6 kW Northern Lights generator, bowthruster, covered aftdeck and a spacious and comfortable interior. She would be a perfect Great Loop cruiser with her fuel efficiency, low profile and shallow draft

37' Pacific Trawler Vessel Walkthrough

Entering the salon through the double doors from the covered aftdeck, you will find cabinetry and entertainment equipment to port, a sleeper sofa aft, a lounge chair, ottoman and table to starboard, galley port forward and head with enclosed shower starboard forward. Step up into the raised pilothouse and you can access the exterior from either side deck access door or step down into the stateroom forward. The engine room is accessed via a hatch in the pilothouse sole or the salon sole.

37' Pacific Trawler Accommodations

Knot'ty Boat offers a stateroom forward with a queen size berth and a sleeper sofa in the salon. The pilothouse benchseat also converts to a berth. The head and enclosed shower is starboard forward in the salon.

37' Pacific Trawler Salon

The salon offers cabinetry and entertainment equipment to port, bar stools at the galley bar port forward, a sleeper sofa aft, a lounge chair, ottoman and table to starboard, opening side and aft windows with shades, reading lights, carpet and double doors aft to the aftdeck.

37' Pacific Trawler Galley

The galley is located port forward in the salon.

- Princess 3-burner gas cooktop and oven
- Panasonic stainless steel microwave oven
- Nova-Kool 12vdc/110vac refrigerator/freezer
- Double stainless steel sinks

- Storage drawers and cabinets
- Glass shelf

37' Pacific Trawler Stateroom

The stateroom is forward and offers a queen size berth, benchseat to starboard, 2 portlights, overhead hatch, 2 hanging lockers, storage drawers, shelves and step storage compartments.

37' Pacific Trawler Pilothouse

The raised pilothouse offers a full helm forward, benchseat/berth aft, side deck access doors each side, carpet, overhead hatch and opening side windows.

37' Pacific Trawler Aftdeck

The covered aftdeck offers a non-skid deck, transom door and storage cabinet starboard forward,

37' Pacific Trawler Audio/Visual Equipment

- Sharp flat screen TV in the salon
- Samsung DVD1080P9 DVD player in the salon

37' Pacific Trawler Electronics

- Furuno 1761 MK3 Radar
- Furuno FCV-600L depth sounder
- Furuno GP-32 GPS/WAAS Navigator GPS
- Autohelm ST7000+ autopilot with wired remote
- Icom IC-M45 VHF
- Ritchie Powerdamp magnetic compass

37' Pacific Trawler Electrical System

- Northern Lights 6 kW generator with approximately 1999 hours

- Statpower ProSine 1800 watt inverter with remote panel
- Xantrex TrueCharge 2 60 amp battery charger
- Bass Products electrical panels
- Cole Hersee battery switches
- 12vdc outlet in the pilothouse
- 50 amp shore cord

37' Pacific Trawler Engine/Mechanical Equipment

- Single Luger L668D 130 hp main engine with approximately 2199 hours
- Twin Disc MG5050 gearbox
- Strong dripless shaft seal
- Morse engine controls
- VDO gauges
- Groco ARG-1500 sea strainer
- Dual Racor 75/500FGX fuel filters with vacuum gauge
- Reverso oil change system
- Seastar hydraulic steering system
- Sidepower bow thruster
- Ocean Marine reverse cycle air conditioning/heating system
- Seaward 6 gallon water heater
- Electric head (2014)
- Spare parts

37' Pacific Trawler Deck Equipment

- Simpson-Lawrence Horizon Express anchor windlass

- Plow type anchor
- Spare Danforth anchor
- Non-skid decks
- Stainless steel & teak steps to the flybridge on starboard side deck
- Stainless steel rails and double lifelines on the flybridge
- Stainless steel rails on the foredeck
- Stainless steel deck hardware
- Windscreen cover
- Diamond SeaGlaze windows and doors
- Fiberglass swimplatform

37' Pacific Trawler Tender

- Water Tender 9' dinghy
- 300lb tender davit with a Warn winch

37' Pacific Trawler Safety and Fire Protection

- Rule bilge pumps
- Rule bilge high water alarm system

37' Pacific Trawler Exclusions

- Sellers' personal belongings

37' Pacific Trawler Disclaimer

The Company offers the details of this vessel in good faith but cannot guarantee or warrant the accuracy of this information nor warrant the condition of the vessel. A buyer should instruct his agents, or his surveyors, to investigate such details as the buyer desires validated. This vessel is offered subject to prior sale, price change, or withdrawal without notice.

Исключения

При продаже яхты исключаются личные вещи владельца.

Отказ от ответственности

Компания предоставляет описание судна или яхты добросовестно, но не может гарантировать точность этой информации, а также не ручается за техническое состояние. Покупатель должен проинструктировать своих агентов или оценщиков исследовать представленную информацию более подробно, по собственному желанию. Продажа судна или яхты, изменение цены или снятие с продажи будет происходить без предварительного уведомления.

ФОТОГРАФИИ

37' Pacific Trawler port aft profile



37' Pacific Trawler starboard forward profile



37' Pacific Trawler anchor windlass



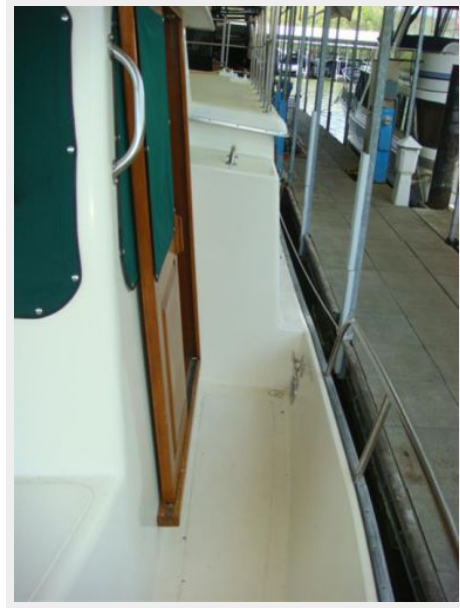
37' Pacific Trawler starboard aft profile



37' Pacific Trawler foredeck aft



37' Pacific Trawler port side deck



37' Pacific Trawler starboard side deck



37' Pacific Trawler aftdeck



37' Pacific Trawler aftdeck port



37' Pacific Trawler aftdeck starboard



37' Pacific Trawler lazarette access



37' Pacific Trawler swimplatform



37' Pacific Trawler salon forward



37' Pacific Trawler salon aft



37' Pacific Trawler salon port



37' Pacific Trawler salon starboard



37' Pacific Trawler salon aft



37' Pacific Trawler galley photo1



37' Pacific Trawler galley photo2



37' Pacific Trawler galley photo3



37' Pacific Trawler head



37' Pacific Trawler shower



37' Pacific Trawler pilothouse



37' Pacific Trawler pilothouse port



37' Pacific Trawler pilothouse starboard



37' Pacific Trawler pilothouse helm



37' Pacific Trawler pilothouse electronics



37' Pacific Trawler pilothouse seating



37' Pacific Trawler stateroom



37' Pacific Trawler stateroom port



37' Pacific Trawler satteroom starboard



37' Pacific Trawler engine room access



37' Pacific Trawler main engine



37' Pacific Trawler Racor fuel filters



37' Pacific Trawler oil change system



37' Pacific Trawler water heater



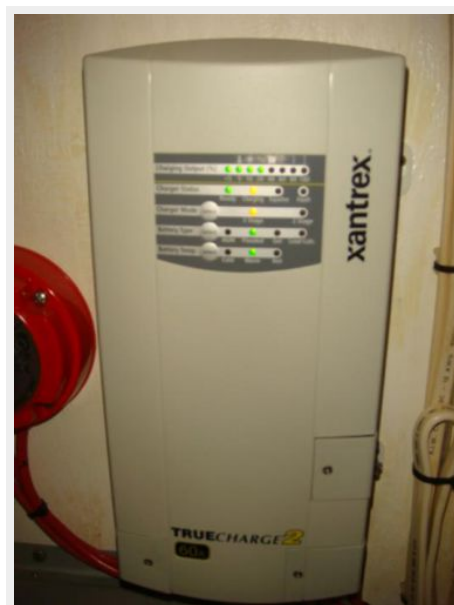
37' Pacific Trawler generator soundbox



37' Pacific Trawler generator



37' Pacific Trawler battery charger



37' Pacific Trawler inverter



КОНТАКТЫ

Андрей Шестаков (Andrey Shestakov) – ведущий яхтенный брокер отдела продаж яхт и судов компании Shestakov Yacht Sales Inc. Официальный представитель Shestakov Yacht Sales Inc. для русскоговорящих клиентов в центральном офисе компании в Майами/Форт Лодердейл/Флорида/США.

Контактная информация

Email: andrey@shestakovyachtsales.com

Web: shestakovyachtsales.com

Телефоны

Краснодарский край: **+7(918)465-66-44**

США, Майами, Флорида: **+1(954)274-4435**

Время работы

Понедельник – Суббота: **9:00 - 21:00**
EDT

Воскресенье: **Закрето**

Адрес



Harbour Towne Marina, 850 NE 3rd St,
STE 213, Dania, FL 33004