

## CABANA II — AMERICAN TUG



**Судостроитель:** AMERICAN TUG

**Год постройки:** 2007

**Модель:** Траулер

**Цена:** ЦЕНА ЯХТЫ ПО ЗАПРОСУ

**Местонахождение:** United States

**Длина общая:** 43' 7" (13.28m)

**Ширина:** 15' 10" (4.83m)

**Макс. осадка:** 4' 10" (1.47m)

**Крейс. скорость:** 14 Kts. (16 MPH)

**Макс. скорость:** 17 Kts. (20 MPH)

Купить **CABANA II — AMERICAN TUG** а также выбрать подходящую вам яхту из нашего каталога яхт вам поможет опытный яхтенный брокер Андрей Шестаков. На сегодняшний день компания **Shestakov Yacht Sales Inc.** имеет большое количество яхт в собственном списке продаж, а также тесно сотрудничает со всеми крупными яхтенными производителями по всему миру.

Для того чтобы купить яхту **CABANA II — AMERICAN TUG** а также проконсультироваться по любому вопросу связанному с покупкой, продажей, чартером яхт позвоните по телефону **+7(918)465-66-44**.

# ОГЛАВЛЕНИЕ

|                                    |    |
|------------------------------------|----|
| ОГЛАВЛЕНИЕ                         | 2  |
| ХАРАКТЕРИСТИКИ                     | 5  |
| Обзор                              | 5  |
| Основная информация                | 5  |
| Размеры                            | 5  |
| Скорость, вместимость и масса      | 6  |
| Размещение                         | 6  |
| Корпус и палуба                    | 6  |
| Информация о двигателе             | 6  |
| ПОДРОБНОЕ ОПИСАНИЕ                 | 7  |
| Manufacturers Description          | 7  |
| Vessel Walkthrough                 | 7  |
| Salon                              | 7  |
| Galley                             | 8  |
| Pilothouse                         | 8  |
| Electronics & Navigation Equipment | 8  |
| Master Stateroom                   | 9  |
| Master Head                        | 9  |
| Guest Stateroom                    | 9  |
| Guest Head                         | 10 |
| Laundry                            | 10 |
| Deck Equipment                     | 10 |
| Engine Room & Mechanical Equipment | 11 |
| Electrical Equipment               | 12 |
| Исключения                         | 12 |
| Отказ от ответственности           | 12 |
| ФОТОГРАФИИ                         | 13 |
| Cockpit                            | 13 |

|                                |           |
|--------------------------------|-----------|
| Salon Forward                  | 13        |
| Salon Aft                      | 13        |
| Galley                         | 13        |
| Pilothouse                     | 13        |
| Pilothouse Helm                | 13        |
| Pilothouse Ice Maker & Freezer | 14        |
| Master Head                    | 14        |
| Master Stateroom               | 14        |
| Guest Head                     | 15        |
| Guest Stateroom                | 15        |
| Washer & Dryer                 | 15        |
| Engine Room Aft                | 15        |
| Water Maker                    | 16        |
| Engine                         | 16        |
| Flybridge Helm                 | 16        |
| Flybridge                      | 16        |
| Boat Deck                      | 16        |
| Foredeck                       | 16        |
| Rudder & Prop                  | 17        |
| Haul Out 5/2015                | 17        |
| Stern                          | 17        |
| Bow at Haul Out                | 17        |
| Fuel Burn Curve                | 18        |
| Port Bow                       | 18        |
| General Arrangement            | 18        |
| <b>КОНТАКТЫ</b>                | <b>19</b> |
| Контактная информация          | 19        |
| Телефоны                       | 19        |
| Время работы                   | 19        |

Адрес

---

19

# ХАРАКТЕРИСТИКИ

## Обзор

CABANA II is a rare flybridge version of the 41 American Tug. Her 540 h.p. Cummins diesel provides efficiency and speed when you need it. She has enjoyed a rigorous maintenance program since new and stands survey ready for her next owner. Perfect for the Great Loop!

## Основная информация

Тип судна: Траулер

Подкатегория: Long Range Cruiser

Модельный год: 2008

Год постройки: 2007

Страна: United States

Верх: Bimini Top

Открытая палуба мостика: Да

## Размеры

Длина общая: 43' 7" (13.28m)

Длина по ватерлинии: 37' 9" (11.51m)

Длина палубы: 41' 4" (12.60m)

Ширина: 15' 10" (4.83m)

Макс. осадка: 4' 10" (1.47m)

Трапы: 19' 3" (5.87m)

Длина привального бруса: 41' 0"  
(12.50m)

## Скорость, вместимость и масса

---

**Крейс. скорость:** 14 Kts. (16 MPH)

**Крейсерская скорость поворота:** 2300 Kts.

**Макс. скорость:** 17 Kts. (20 MPH)

**Макс. скорость поворота:** 2600 Kts.

**Водоизмещение:** 30000 Pounds

**Вместимость воды:** 210 Gallons

**Вместимость сточного бака:** 60 Gallons

**Объем топливного бака:** 640 Gallons

## Размещение

---

**Всего кают:** 2

**Всего коек:** 2

**Спальные места:** 4

**Всего ком. состава:** 2

## Корпус и палуба

---

**Материал корпуса:** Fiberglass

**Материал палубы:** Fiberglass

**Комплектация корпуса:** Semi-Displacement

**Цвет корпуса:** Flag Blue

**Отделка корпуса:** Aluminum

**Дизайнер корпуса:** Lynn Senour

## Информация о двигателе

---

**Двигатели:** 1

**Производитель:** Cummins

**Модель:** QSC 8.3

**Тип двигателя:** Inboard

**Тип топлива:** Diesel

# ПОДРОБНОЕ ОПИСАНИЕ

---

## Manufacturers Description

---

American Tug is designed with our guiding principles in mind: quality construction, spacious interiors, generous performance, and standards that put the competition to shame. Established in 2000, Tomco is based in LaConner, WA an area with a strong maritime tradition. It is this tradition, infused with modern construction techniques, that results in sturdy yet nimble trawlers perfect for both short and long term cruising.

## Vessel Walkthrough

---

Entering the salon from the covered cockpit, one is immediately impressed by the open feeling of warmth created by natural light from the large windows combined with the rich straight grain sapele joinerwork throughout. There is an open line of sight from the aft entry door to the pilothouse. Immediately to starboard there is an L-shaped Ultraleather settee fronted by a high gloss finished sapele hi-lo table. Two bar stools are to port followed by the well equipped galley. The entertainment center with flat screen TV and stereo is opposite the galley to port facing aft.

Continuing forward, up four steps is the spacious pilothouse. American Tug makes full use of the large "stack", the defining feature of a tug boat, providing extra head room above the stairs. An ice maker and freezer are built-in on the port and starboard sides at the top of the stairs. The pilothouse is large and open and provides full 360° visibility. An adjustable Ultraleather cushioned helm chair on a fixed pedestal is centerline facing the helm console. All electronics, gauges and controls are easily accessible. Aft of the helm to port is a cushioned settee with a fixed table. There are port and starboard sliding doors accessing the side decks.

Forward on the starboard side of the pilothouse is a stairwell leading down to the master and guest staterooms. The full beam master stateroom is located amidships and features a queen size walk around berth thwart ships and generous en suite bath and stall shower. The guest stateroom is forward with an oversize double berth and en suite head with stall shower. A full size stacked washer and dryer are located in a locker in the guest stateroom.

The spacious flybridge and boat deck are accessible from the cockpit via a six step ladder. Aft on the boat deck is the hard bottom inflatable dinghy mounted centerline and the hydraulic davit on the port side. The flybridge centerline helm is up four steps from the boat deck.

## Salon

---

- Ultraleather L-shaped cushioned settee
- (2) wood bar stools
- Mahogany high gloss hi-lo table w/fold down leaves

- Carpeted sole
- Pleated Duette window shades
- 26" Sharp LCD television
- Clarion AM/FM stereo receiver w/DVD player
- Satellite TV receiver
- Stereo speakers
- Fore & Aft engine room access hatches
- Abundant drawer & cabinet storage

## Galley

---

- Nova Kool RFU 9000 2 door upright refrigerator & freezer
- Princess 3 burner ceran cook top w/oven below, & cover w/integrated cutting board
- Ventilation fan
- Carousel microwave oven
- Granicoat solid surface countertops
- Under mounted double sink
- (3) large storage drawers
- (3) storage cabinets
- Teak & holly sole

## Pilothouse

---

- Bentley's Magnum LX Ultraleather cushioned helm chair w/head & foot rests
- Ultraleather settee w/fixed table & storage beneath
- Port & Starboard sliding entry doors
- Chart storage compartment
- Teak & stainless steel destroyer wheel
- Large helm console
- Carpet sole
- Red & white overhead lighting
- Hanging locker
- Nova Kool DC freezer
- Sea Freeze DC ice maker

## Electronics & Navigation Equipment

---

- (2) Raymarine E120 Multi Function Displays w/GPS chart plotter, color depth sounder, radar, sat TV input (pilothouse)
- Raymarine ST70 speed, depth unit
- Raymarine ST6002 autopilot w/wireless remote



- Raymarine E80 Multi Function Display (flybridge)
- Raymarine Ray 218 VHF radio (pilothouse)
- ACR searchlight control
- SmartCraft Vessel View engine function display (pilothouse & flybridge)
- Side Power bow & stern thruster controls w/wireless remote
- Cummins SmartCraft electronic engine controls w/remote
- KVH Tracvision satellite TV system
- Profile tank level monitor
- Xantrex battery monitor

---

## Master Stateroom

---

- Queen size island berth, thwart ship w/ (4) storage drawers beneath
- Built-in night stands w/drawers & storage compartments
- (2) stainless steel reading lights
- Cedar lined hanging locker
- Flip-down Insignia LCD television
- Built-in dresser w/mirror
- (2) stainless steel opening portlights
- Overhead valence w/LED lighting
- Electric forced air heater
- Carpeted sole

---

## Master Head

---

- Vanity w/Granicoat counter & molded sink
- Vacuflush head
- Fiberglass stall shower w/glass door
- Stainless steel portlight
- Teak & Holly sole
- Mirrored medicine cabinet
- Electric heater

---

## Guest Stateroom

---

- Oversize double berth w/(4) storage drawers beneath
- (2) stainless steel reading lights
- Hanging locker
- (2) stainless steel opening portlights
- Overhead Bomar hatch
- Locker w/washer & dryer

- Carpeted sole

---

## Guest Head

---

- Vanity w/Granicoat counter & molded sink
- Vacuflush head
- Fiberglass stall shower w/glass door
- Stainless steel portlight
- Teak & Holly sole
- Mirrored medicine cabinet
- Electric heater

---

## Laundry

---

- Bosch Axxis stainless steel drum washer
- Bosch Axxis 240V vented dryer

---

## Deck Equipment

---

- Dual anchor rollers
- 40 lb. Bruce anchor w/250' 5/16" high tensile chain
- 30 lb. plow anchor
- Lofrans Tigres horizontal windlass w/foot controls
- Stainless steel life rails
- (8) Tanner stainless steel cleats
- Salt water wash downs fore & aft
- Anchor locker
- (3) Bomar hatches
- Fiberglass decks w/molded non-skid
- Dual electric air horns
- International navigation lights
- Dockside water hook up
- Glendinning Cablemaster
- Cable TV/phone connection
- Hot & cold shower head
- Cockpit dry sink w/storage below
- Cockpit boarding gate to swim platform
- Collapsible stainless steel swim ladder
- Transom stainless steel grab rails
- (2) stainless steel guard rails on swim platform
- Centerline cockpit door to main cabin

- (6) step ladder to boat deck
- Stainless steel hinged radar arch
- (2) aft facing spreader lights
- Steelhead Marine WD800 low profile hydraulic davit
- AB 10VL hard bottom inflatable tender w/15 hp Yamaha outboard motor
- Stainless steel perimeter guard rails on boat deck
- Todd helm & companion chairs
- Port & starboard bench seating
- Bimini top on stainless steel frame (new Sunbrella canvas 2015)
- (3) side Eisenglass enclosure w/ U-zips (new 2015)
- Flybridge helm w/stainless steel destroyer wheel
- 20" life ring
- 8" stainless steel bell

---

## Engine Room & Mechanical Equipment

---

- Cummins QSC8.3-540 HP diesel engine w/1650 hours
- Twin Disc MG5075A reduction gear w/2.53:1 ratio
- Dual Racor fuel filters w/service valve & vacuum gauge
- Single Racor filter to generator
- Airsep air intake system, main engine
- Tides dripless shaft seal (replaced 2015)
- Dripless rudder seal
- 2.5" stainless steel shaft
- Side Power 8 H.P. electric bow & stern thrusters
- Sea Star hydraulic wheel steering
- Sealand Vacuflush fresh water sanitation system
- (3) Rule 2000 GPH automatic bilge pumps
- High water bilge alarm
- Macerator discharge pump for black water system
- Groco raw water sea strainers
- Reverso oil change system, main engine, generator & transmission
- Johnson fresh water pump w/accumulator tank
- 11 gallon stainless steel hot water heater w/heat exchanger
- Fresh water filtration system
- Watermakers Inc. 400 GPD water maker
- Marine Air 44,000 BTU air conditioning system
- Fireboy FE241, 9.3 lb. automatic fire suppression system w/engine shut down & manual override
- Heatercraft engine forced air heat system, salon & pilothouse
- Central vacuum system

---

## Electrical Equipment

---

- 8 kW Northern Lights generator in sound shield w/850 hours
- 2 kW Magnum Energy inverter/charger
- 100 amp multi step battery charging
- Blue Seas automatic battery combiner for system charging
- (3) 8D AGM batteries, ships service
- 8D AGM battery, engine start
- 4D AGM battery for bow thruster & windlass
- Group 27 AGM battery, generator start
- Battery cutoff switches to main engine, ship's service, davit, inverter
- Battery parallel switch
- 120V/240V, 50 amp shorepower
- Glendinning shore power cord retractor
- Blue Seas breaker panels w/digital metering of voltage, amps, watts & cycles
- Vimar electric switches throughout

---

## Исключения

---

При продаже яхты исключаются личные вещи владельца.

---

## Отказ от ответственности

---

Компания предоставляет описание судна или яхты добросовестно, но не может гарантировать точность этой информации, а также не ручается за техническое состояние. Покупатель должен проинструктировать своих агентов или оценщиков исследовать представленную информацию более подробно, по собственному желанию. Продажа судна или яхты, изменение цены или снятие с продажи будет происходить без предварительного уведомления.

# ФОТОГРАФИИ

**Cockpit**



**Salon Forward**



**Salon Aft**



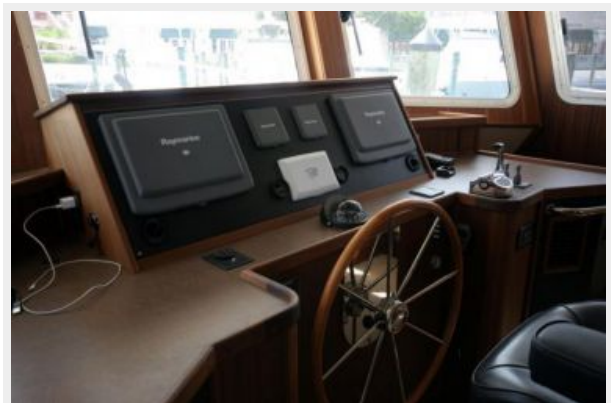
**Galley**



**Pilothouse**

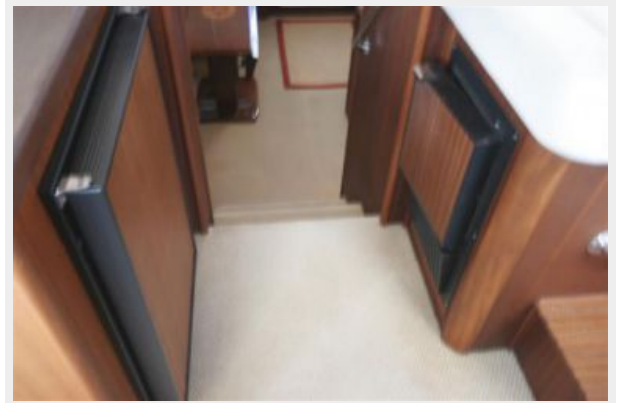


**Pilothouse Helm**





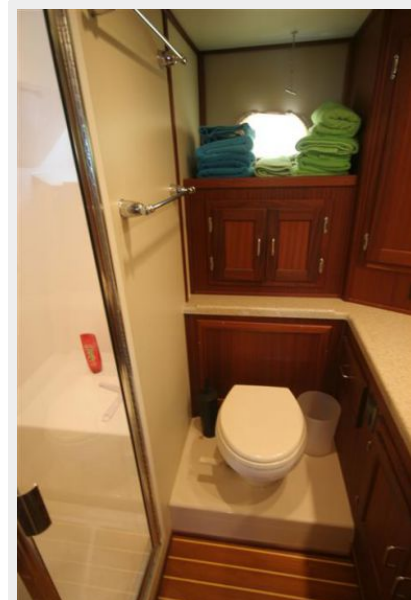
**Pilothouse Ice Maker & Freezer**



**Master Stateroom**



**Master Head**





**Guest Stateroom**



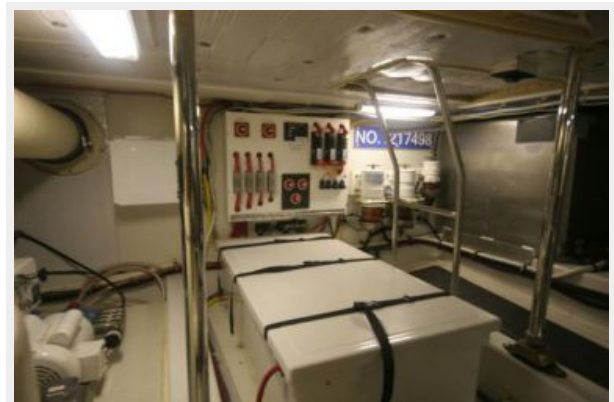
**Guest Head**



**Washer & Dryer**



**Engine Room Aft**



**Water Maker**



**Engine**



**Flybridge Helm**



**Flybridge**



**Boat Deck**



**Foredeck**





**Haul Out 5/2015**



**Rudder & Prop**



**Bow at Haul Out**



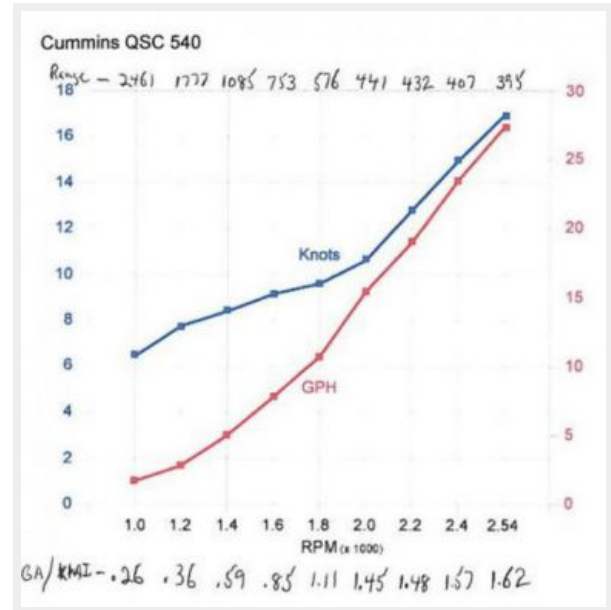
**Stern**



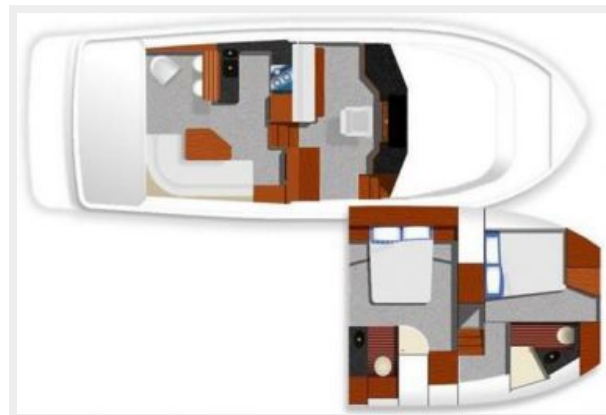
### Port Bow



### Fuel Burn Curve



### General Arrangement



# КОНТАКТЫ

---

Андрей Шестаков (Andrey Shestakov) – ведущий яхтенный брокер отдела продаж яхт и судов компании Shestakov Yacht Sales Inc. Официальный представитель Shestakov Yacht Sales Inc. для русскоговорящих клиентов в центральном офисе компании в Майами/Форт Лодердейл/Флорида/США.

## Контактная информация

---

Email: [andrey@shestakovyachtsales.com](mailto:andrey@shestakovyachtsales.com)

Web: [shestakovyachtsales.com](http://shestakovyachtsales.com)

## Телефоны

---

Краснодарский край: **+7(918)465-66-44**

США, Майами, Флорида: **+1(954)274-4435**

## Время работы

---

Понедельник – Суббота: **9:00 - 21:00**  
EDT

Воскресенье: **Закрито**

## Адрес

---



Harbour Towne Marina, 850 NE 3rd St,  
STE 213, Dania, FL 33004