

SAINT ALEXANDRA — AZIMUT S



Builder: AZIMUT S

Year Built: 2007

Model: Motor Yacht

Price: PRICE ON APPLICATION

Location: United States

LOA: 86' 0" (26.21m)

Beam: 19' 2" (5.84m)

Max Draft: 4' 5" (1.35m)

Cruise Speed: 37 Kts. (43 MPH)

Max Speed: 42 Kts. (48 MPH)

Our experienced yacht broker, Andrey Shestakov, will help you choose and buy a yacht that best suits your needs **Saint Alexandra — AZIMUT S** from our catalogue. Presently, at Shestakov Yacht Sales Inc., we have a wide variety of yachts available on our sale's list. We also work in close contact with all the big yacht manufacturers from all over the world.

If you would like to buy a yacht **Saint Alexandra — AZIMUT S** or would like help answering any questions concerning purchasing, selling or chartering a yacht, please call **+1(954)274-4435**

TABLE OF CONTENTS

TABLE OF CONTENTS	2
SPECIFICATIONS	5
Overview	5
Basic Information	5
Dimensions	5
Speed, Capacities and Weight	5
Accommodations	6
Hull and Deck Information	6
Engine Information	6
DETAILED INFORMATION	7
Overview	7
Summary Of Options	7
Electronics	7
Electrical	7
Bottom	8
Tankage	8
Swim Platform	8
Tender Garage	8
Tenders	8
Appliances	9
Air Conditioning	9
Deck Equipment	9
Engine Room	9
Exclusions	9
Disclaimer	10
PHOTOS	11
Starboard Side	11
Port Side	11

Aft View	11
Side View	11
Front Deck	11
Aft Deck Starboard View	11
Aft Deck Port View	12
Looking Aft	12
Aft Deck Looking Down To Lounge	12
Salon Looking Forward	12
Salon Looking Aft	12
Salon Looking Forward Port	12
Helm 1	12
Helm 2	12
Helm 3	13
Master Looking Righ	13
Master	13
Master Head 1	13
Master Head 2	13
VIP 1	13
VIP 2	13
VIP Head	13
VIP Head 2	14
Guest Cabin 1	14
Guest Cabin 2	14
Galley	14
Engine Room	14
Lower Deck Layout	14
CONTACTS	15
Contact details	15
Telephones	15

Office hours 15

Address 15

SPECIFICATIONS

Overview

U.S. DUTY PAID!! This 2007/2008 Azimut 86S is by far the most well maintained and up to date on the market. From day one is has been meticulously cared for and maintained to the highest standards with an open checkbook policy. The boat has never wanted for upgrades or maintenance her entire life. The owner is extremely detailed in his ongoing maintenance as well. She just came out of the yard June 25th with a fresh bottom as well as a 4 stage hull and deck polish, she sparkles. Additionally while it was in the yard all systems were inspected, including the jets and engines, and various upgrades were done to her. She sleeps 8 total in 4 luxurious staterooms and her main salon and aft deck offer the perfect entertaining spaces. Your time is precious, and her Hamilton Jets take her up to a comfortable 40 knots and cruises at 35 to get where you need to go quickly. This Azimut 86S is ready to take you on your next journey, anywhere in the world and is one of only two offered in the USA/North America. We've been asking the owner to change her name to "No Excuses" as this more reflects the care and quality this yacht exudes. Take a look and call, you will be amazed.

Basic Information

Category: Motor Yacht

Model Year: 2008

Year Built: 2007

Country: United States

Dimensions

LOA: 86' 0" (26.21m)

Beam: 19' 2" (5.84m)

Max Draft: 4' 5" (1.35m)

MFG Length: 86' 10" (26.47m)

Speed, Capacities and Weight

Cruise Speed: 37 Kts. (43 MPH)

Max Speed: 42 Kts. (48 MPH)

Gross Tonnage: 69 Pounds

Water Capacity: 304.062031852 Gallons

Holding Tank: 110.95226184 Gallons

Fuel Capacity: 1849.204364 Gallons

Accommodations

Total Cabins: 4

Total Berths: 6

Sleeps: 8

Total Heads: 4

Captain Cabin: True

Crew Cabin: 2

Crew Berths: 3

Crew Sleeps: 3

Crew Heads: 1

Hull and Deck Information

Hull Material: GRP

Deck Material: GRP

Hull Configuration: Modified Deep Vee

Hull Color: Red

Hull Finish: Aluminum

Hull Designer: Stefano Righini

Interior Designer: Carlo Galeazzi

Engine Information

Engines: 2

Manufacturer: MTU

Model: 16V2000

Engine Type: Inboard

Fuel Type: Diesel

DETAILED INFORMATION

Overview

This 2007/2008 Azimut 86S is by far the most well maintained and up to date on the market. From day one it has been meticulously cared for and maintained to the highest standards with an open checkbook policy. The boat has never wanted for upgrades or maintenance her entire life. The owner is extremely detailed in his ongoing maintenance as well. She just came out of the yard June 25th with a fresh bottom as well as a 4 stage hull and deck polish, she sparkles. Additionally while it was in the yard all systems were inspected, including the jets and engines, and various upgrades were done to her. She sleeps 8 total in 4 luxurious staterooms and her main salon and aft deck offer the perfect entertaining spaces. Your time is precious, and her Hamilton Jets take her up to a comfortable 40+ knots and cruises at 35+ knots to get where you need to go quickly. This Azimut 86S is ready to take you on your next journey, anywhere in the world and is one of only two offered in the USA/North America. We've been asking the owner to change her name to "No Excuses" as this more reflects the care and quality this yacht has received. Take a look and call, you will be amazed.

Summary Of Options

This 2007 Azimut 86S has it all. All images of the ACTUAL boat taken June 25th 2015 in Biscayne Bay, Miami NEW YACHT CONTROLLER Hamilton Jets Bowthruster Passerall Underwater Lights Watermaker Universal Shore Power 50/60 Cycle, plug in anywhere. New Batteries New Bottom Paint New Heat Reflecting Window Tinting Fresh 4 stage polish on hull and deck. New Miele Dishwasher as well as washer and dryer. Updated AC's New Bose 535 Lifestyle System in main salon and Blu-ray Player New upgraded sound system with subwoofer for sunpad. Full Services on Hamiltons Drives and MTU Engines Avon Jet Tender with under 50 hours since new Low Engine Hours US DUTY IS PAID! And so much more. Everything YOU want! Easy to see in Miami and the Bahamas.

Electronics

RADAR: Raymarine E120 VHF: Raymarine Ray 240 SATTV: Yes GPS: Two Raymarine E120 DEPTHSOUNDER: Raymarine ST90 COMPASS: Polare magnetic SEARCHLIGHT: ITT Jabsco AUTOPILOT: Raymarine ST290 PLOTTER PROGRAM: C-Map

Electrical

Generators: PORT GENERATOR: Kohler 20KW STARBOARD GENERATOR: Kohler 20KW MODEL #: 20EFOZD Hours approximately 3600 COOLED: freshwater FILTERS: primary: Racor Other: BATTERY CHARGER[S]: Three Mastervolt 24-volt 25-amp, Mastervolt 24-volt 100-amp

STORAGE BATTERIES, ENGINE: Four 12-volt LIGHTING: 24-volt D.C. BATTERY INSTALLATION: in covered battery boxes: Four 12-volt 8D to engines Two 12-volt 8D to Hamilton Jet controls Two 12-volt to MTU controls One 12-volt to each generator Sixteen 6-volt to house service Two 12-volt to bow thruster 120/240 generator/shore selector switches Two amp meters Voltmeter Frequency meter 24-Volt meter selector switch 24-Volt meter 24-Volt discharge meter 24-Volt charge meter Forward fuel tank meter with high and low level alarm indicators Day tank fuel meter with high and low level alarm indicators Water tank fuel meter with high and low level alarm indicators 120/240 isolator 120/240 generator shore power control panel Port and starboard engine room extractor fan controls 120/240 A.C. circuit breakers 24-Volt circuit breakers BILGE PUMPS: 3 electric/automatic, 2 sump, electric to compartment manifold FRESHWATER PRESSURE SYSTEM: Two 24 VDC AIR COMPRESSOR: 220-volt electric New Universal Shore power Transformer June 2015. 50/60 Hertz. Plug into ANY shore power outlet worldwide. Batteries replaced May/June 2015 BOW THRUSTER: Side Power/ 24-volt

Bottom

Hamilton Water Jets Bow thruster Sea chest raw water intake at transom Intruder trim planes, port and starboard Two underwater lights in transom Keel cooler to refrigeration, starboard

Tankage

FUEL; NUMBER/CAPACITY: 3; diesel approximately 7,000 Liters total LOCATION[s]: approximately 1,750 liter each port and starboard outboard in the engine room, approximately 1,250 liter each centerline below galley and master head WATER; NUMBER/CAPACITY: 1 approximately 1,150 liters total LOCATION[s]: under forward companionway SHAPE: rectangular MATERIAL[s]: aluminum HOLDING; NUMBER/CAPACITY: 1 approximately 420 liters total LOCATION[s]: under forward companionway SHAPE: rectangular MATERIAL[s]: fiberglass

Swim Platform

Teak over fiberglass deck Locker, starboard, with shore power connection Locker, port, with: Dockside water inlet, Freshwater shower, Deck washdown outlet

Tender Garage

Fiberglass sole with nonskid Tender roller assemblies with winches Two hydraulic actuators to transom door hatch

Tenders

Avon Jet 320 2012 with under 50 hours.

Appliances

REFRIGERATION: Whirlpool, Frigomar STOVETOP: Miele 4-burner electric OVEN: Miele
DISHWASHER: Miele WATER HEATER: Two 30-gallons 220-volt electric **New June 2015**
Miele Dishwasher On Order: New Miele clothes washer and dryer to be installed July 2015

Air Conditioning

MANUFACTURER[S]: Cruisair NO. OF COMPRESSORS: 3 RAW WATER COOLING PUMPS:
one BTU'S: 160,000 combined

Deck Equipment

Anchor: 50KG Anchor with 200' of Chain Windlass: Lofrans Cleats: SS Railings: SS
PASSARELLE: Mor Saverio electric/hydraulic

Engine Room

Aft of galley entry Five 110-volt fluorescent lights with D.C. emergency backup lighting 29.5-kg
FE227 cylinder, tag April 2014 Electric/automatic bilge pump High water alarm switch Two Deep
Sea underwater light transformers 220-Volt ventilation extractors, port and starboard, with speed
controls Freshwater filter Fiberglass muffler to each generator Passarelle control panel Racor
filters to each generator Air conditioning raw water circulating pump Two Cruisair air conditioning
compressor units [crew/galley, salon] 24-Volt fuel transfer pump to manifold Manual fuel transfer
pump to manifold Kohler 20-kw generators, one port and one starboard 12-Volt battery with cutoff
switch to each generator Four 12-volt batteries to the port and starboard engines, in covered
boxes Four 12-volt batteries to MDEC system services in covered box, port Battery switch panel
to: Port and starboard engine main start Water jet Battery charger supply switches to main engine
and MDEC batteries MTU engine electronic junction boxes Mastervolt 24-volt battery charger to
service batteries Mastervolt 24-volt battery charger to engine controls Mastervolt battery charger
to bow thruster Mastervolt battery charge to Hamilton Jet controls Aluminum "day" fuel tank, port
and starboard, 1,750-liter each 220-Volt fire/deck wash pump 220-Volt bilge pump with suction
manifold to: Manual hand operated bilge pump Three CCTV cameras [port and aft forward,
centerline forward] Shore power circuit breakers Main hydraulic reservoir and control [passarelle,
garage, tender winches] Hamilton Water Jet back-up control panel Idromar watermaker

Exclusions

Owner's personal belongings.

Disclaimer

The Company offers the details of this vessel or yacht in good faith but cannot guarantee or warrant the accuracy of this information nor warrant the condition of the vessel. A buyer should instruct his representatives, agents, or his surveyors, to investigate such details as the buyer desires validated. This vessel or yacht is offered subject to prior sale, price change, or withdrawal without notice.

PHOTOS

Starboard Side



Port Side



Aft View



Side View



Front Deck



Aft Deck Starboard View



Aft Deck Port View



Looking Aft



Aft Deck Looking Down To Lounge



Salon Looking Forward



Salon Looking Aft



Salon Looking Forward Port



Helm 1



Helm 2



Helm 3



Master Looking Righ



Master



Master Head 1



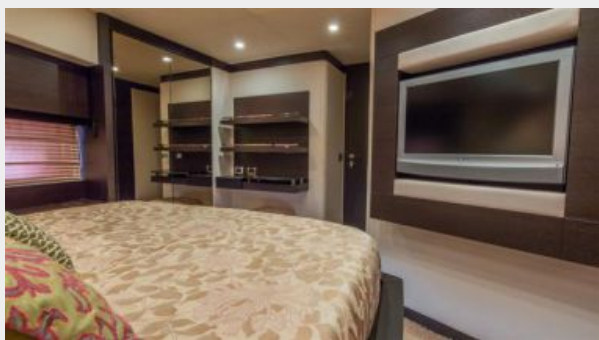
Master Head 2



VIP 1



VIP 2



VIP Head



VIP Head 2



Guest Cabin 1



Guest Cabin 2



Galley



Engine Room



Lower Deck Layout



CONTACTS

Andrey Shestakov, leading yacht broker of the sales department of Shestakov Yacht Sales Inc. Shestakov Yacht Sales Inc., the official representative of the Miami/Fort Lauderdale FL headquarters.

Contact details

Email: andrey@shestakovyachtsales.com

Web: shestakovyachtsales.com/en/

Telephones

USA: +1(954)274-4435

Office hours

Monday – Saturday: **9:00 - 21:00** EDT

Sunday: **closed**

Address



Harbour Towne Marina, 850 NE 3rd St,
STE 213, Dania, FL 33004