

## SAINT ALEXANDRA — AZIMUT S



**Судостроитель:** AZIMUT S

**Год постройки:** 2007

**Модель:** Моторная яхта

**Цена:** **ЦЕНА ЯХТЫ ПО ЗАПРОСУ**

**Местонахождение:** United States

**Длина общая:** 86' 0" (26.21m)

**Ширина:** 19' 2" (5.84m)

**Макс. осадка:** 4' 5" (1.35m)

**Крейс. скорость:** 37 Kts. (43 MPH)

**Макс. скорость:** 42 Kts. (48 MPH)

Купить Saint Alexandra — AZIMUT S а также выбрать подходящую вам яхту из нашего каталога яхт вам поможет опытный яхтенный брокер Андрей Шестаков. На сегодняшний день компания Shestakov Yacht Sales Inc. имеет большое количество яхт в собственном списке продаж, а также тесно сотрудничает со всеми крупными яхтенными производителями по всему миру.

Для того чтобы купить яхту Saint Alexandra — AZIMUT S а также проконсультироваться по любому вопросу связанному с покупкой, продажей, чартером яхт позвоните по телефону **+7(918)465-66-44**.

# ОГЛАВЛЕНИЕ

ОГЛАВЛЕНИЕ	2
ХАРАКТЕРИСТИКИ	5
Обзор	5
Основная информация	5
Размеры	5
Скорость, вместимость и масса	6
Размещение	6
Корпус и палуба	6
Информация о двигателе	6
ПОДРОБНОЕ ОПИСАНИЕ	7
Overview	7
Summary Of Options	7
Electronics	7
Electrical	7
Bottom	8
Tankage	8
Swim Platform	8
Tender Garage	8
Tenders	8
Appliances	9
Air Conditioning	9
Deck Equipment	9
Engine Room	9
Исключения	9
Отказ от ответственности	10
ФОТОГРАФИИ	11
Starboard Side	11
Port Side	11

---

Aft View	11
Side View	11
Front Deck	11
Aft Deck Starboard View	11
Aft Deck Port View	12
Looking Aft	12
Aft Deck Looking Down To Lounge	12
Salon Looking Forward	12
Salon Looking Aft	12
Salon Looking Forward Port	12
Helm 1	12
Helm 2	12
Helm 3	13
Master Looking Righ	13
Master	13
Master Head 1	13
Master Head 2	13
VIP 1	13
VIP 2	13
VIP Head	13
VIP Head 2	14
Guest Cabin 1	14
Guest Cabin 2	14
Galley	14
Engine Room	14
Lower Deck Layout	14
<b>КОНТАКТЫ</b>	<b>15</b>
Контактная информация	15
Телефоны	15

---

---

Время работы	15
Адрес	15

# ХАРАКТЕРИСТИКИ

## Обзор

U.S. DUTY PAID!! This 2007/2008 Azimut 86S is by far the most well maintained and up to date on the market. From day one is has been meticulously cared for and maintained to the highest standards with an open checkbook policy. The boat has never wanted for upgrades or maintenance her entire life. The owner is extremely detailed in his ongoing maintenance as well. She just came out of the yard June 25th with a fresh bottom as well as a 4 stage hull and deck polish, she sparkles. Additionally while it was in the yard all systems were inspected, including the jets and engines, and various upgrades were done to her. She sleeps 8 total in 4 luxurious staterooms and her main salon and aft deck offer the perfect entertaining spaces. Your time is precious, and her Hamilton Jets take her up to a comfortable 40 knots and cruises at 35 to get where you need to go quickly. This Azimut 86S is ready to take you on your next journey, anywhere in the world and is one of only two offered in the USA/North America. We've been asking the owner to change her name to "No Excuses" as this more reflects the care and quality this yacht exudes. Take a look and call, you will be amazed.

## Основная информация

**Тип судна:** Моторная яхта

**Модельный год:** 2008

**Год постройки:** 2007

**Страна:** United States

## Размеры

**Длина общая:** 86' 0" (26.21m)

**Ширина:** 19' 2" (5.84m)

**Макс. осадка:** 4' 5" (1.35m)

**Длина привального бруса:** 86' 10"  
(26.47m)

## Скорость, вместимость и масса

**Крейс. скорость:** 37 Kts. (43 MPH)

**Макс. скорость:** 42 Kts. (48 MPH)

**Чистый вес:** 69 Pounds

**Вместимость воды:** 304.062031852  
Gallons

**Вместимость сточного бака:**  
110.95226184 Gallons

**Объем топливного бака:** 1849.204364  
Gallons

## Размещение

**Всего кают:** 4

**Всего коек:** 6

**Спальные места:** 8

**Всего ком. состава:** 4

**Каюта капитана:** Да

**Каюты экипажа:** 2

**Койки экипажа:** 3

**Спальных мест экипажа:** 3

**Комм. состав экипажа:** 1

## Корпус и палуба

**Материал корпуса:** GRP

**Материал палубы:** GRP

**Комплектация корпуса:** Modified Deep  
Vee

**Цвет корпуса:** Red

**Отделка корпуса:** Aluminum

**Дизайнер корпуса:** Stefano Righini

**Дизайнер интерьера:** Carlo Galeazzi

## Информация о двигателе

**Двигатели:** 2

**Производитель:** MTU

**Модель:** 16V2000

**Тип двигателя:** Inboard

**Тип топлива:** Diesel

---

# ПОДРОБНОЕ ОПИСАНИЕ

---

## Overview

---

This 2007/2008 Azimut 86S is by far the most well maintained and up to date on the market. From day one it has been meticulously cared for and maintained to the highest standards with an open checkbook policy. The boat has never wanted for upgrades or maintenance her entire life. The owner is extremely detailed in his ongoing maintenance as well. She just came out of the yard June 25th with a fresh bottom as well as a 4 stage hull and deck polish, she sparkles. Additionally while it was in the yard all systems were inspected, including the jets and engines, and various upgrades were done to her. She sleeps 8 total in 4 luxurious staterooms and her main salon and aft deck offer the perfect entertaining spaces. Your time is precious, and her Hamilton Jets take her up to a comfortable 40+ knots and cruises at 35+ knots to get where you need to go quickly. This Azimut 86S is ready to take you on your next journey, anywhere in the world and is one of only two offered in the USA/North America. We've been asking the owner to change her name to "No Excuses" as this more reflects the care and quality this yacht has received. Take a look and call, you will be amazed.

## Summary Of Options

---

This 2007 Azimut 86S has it all. All images of the ACTUAL boat taken June 25th 2015 in Biscayne Bay, Miami NEW YACHT CONTROLLER Hamilton Jets Bowthruuster Passerall Underwater Lights Watermaker Universal Shore Power 50/60 Cycle, plug in anywhere. New Batteries New Bottom Paint New Heat Reflecting Window Tinting Fresh 4 stage polish on hull and deck. New Miele Dishwasher as well as washer and dryer. Updated AC's New Bose 535 Lifestyle System in main salon and Blu-ray Player New upgraded sound system with subwoofer for sunpad. Full Services on Hamiltons Drives and MTU Engines Avon Jet Tender with under 50 hours since new Low Engine Hours US DUTY IS PAID! And so much more. Everything YOU want! Easy to see in Miami and the Bahamas.

## Electronics

---

RADAR: Raymarine E120 VHF: Raymarine Ray 240 SATTV: Yes GPS: Two Raymarine E120 DEPTHSOUNDER: Raymarine ST90 COMPASS: Polare magnetic SEARCHLIGHT: ITT Jabsco AUTOPILOT: Raymarine ST290 PLOTTER PROGRAM: C-Map

## Electrical

---

Generators: PORT GENERATOR: Kohler 20KW STARBOARD GENERATOR: Kohler 20KW MODEL #: 20EFOZD Hours approximately 3600 COOLED: freshwater FILTERS: primary: Racor Other: BATTERY CHARGER[S]: Three Mastervolt 24-volt 25-amp, Mastervolt 24-volt 100-amp

STORAGE BATTERIES, ENGINE: Four 12-volt LIGHTING: 24-volt D.C. BATTERY INSTALLATION: in covered battery boxes: Four 12-volt 8D to engines Two 12-volt 8D to Hamilton Jet controls Two 12-volt to MTU controls One 12-volt to each generator Sixteen 6-volt to house service Two 12-volt to bow thruster 120/240 generator/shore selector switches Two amp meters Voltmeter Frequency meter 24-Volt meter selector switch 24-Volt meter 24-Volt discharge meter 24-Volt charge meter Forward fuel tank meter with high and low level alarm indicators Day tank fuel meter with high and low level alarm indicators Water tank fuel meter with high and low level alarm indicators 120/240 isolator 120/240 generator shore power control panel Port and starboard engine room extractor fan controls 120/240 A.C. circuit breakers 24-Volt circuit breakers BILGE PUMPS: 3 electric/automatic, 2 sump, electric to compartment manifold FRESHWATER PRESSURE SYSTEM: Two 24 VDC AIR COMPRESSOR: 220-volt electric New Universal Shore power Transformer June 2015. 50/60 Hertz. Plug into ANY shore power outlet worldwide. Batteries replaced May/June 2015 BOW THRUSTER: Side Power/ 24-volt

## Bottom

---

Hamilton Water Jets Bow thruster Sea chest raw water intake at transom Intruder trim planes, port and starboard Two underwater lights in transom Keel cooler to refrigeration, starboard

## Tankage

---

FUEL; NUMBER/CAPACITY: 3; diesel approximately 7,000 Liters total LOCATION[s]: approximately 1,750 liter each port and starboard outboard in the engine room, approximately 1,250 liter each centerline below galley and master head WATER; NUMBER/CAPACITY: 1 approximately 1,150 liters total LOCATION[s]: under forward companionway SHAPE: rectangular MATERIAL[s]: aluminum HOLDING; NUMBER/CAPACITY: 1 approximately 420 liters total LOCATION[s]: under forward companionway SHAPE: rectangular MATERIAL[s]: fiberglass

## Swim Platform

---

Teak over fiberglass deck Locker, starboard, with shore power connection Locker, port, with: Dockside water inlet, Freshwater shower, Deck washdown outlet

## Tender Garage

---

Fiberglass sole with nonskid Tender roller assemblies with winches Two hydraulic actuators to transom door hatch

## Tenders

---

Avon Jet 320 2012 with under 50 hours.



---

## Appliances

---

REFRIGERATION: Whirlpool, Frigomar STOVETOP: Miele 4-burner electric OVEN: Miele  
DISHWASHER: Miele WATER HEATER: Two 30-gallons 220-volt electric **New June 2015**  
**Miele Dishwasher On Order: New Miele clothes washer and dryer to be installed July 2015**

---

## Air Conditioning

---

MANUFACTURER[S]: Cruisair NO. OF COMPRESSORS: 3 RAW WATER COOLING PUMPS:  
one BTU'S: 160,000 combined

---

## Deck Equipment

---

Anchor: 50KG Anchor with 200' of Chain Windlass: Lofrans Cleats: SS Railings: SS  
PASSARELLE: Mor Saverio electric/hydraulic

---

## Engine Room

---

Aft of galley entry Five 110-volt fluorescent lights with D.C. emergency backup lighting 29.5-kg  
FE227 cylinder, tag April 2014 Electric/automatic bilge pump High water alarm switch Two Deep  
Sea underwater light transformers 220-Volt ventilation extractors, port and starboard, with speed  
controls Freshwater filter Fiberglass muffler to each generator Passarelle control panel Racor  
filters to each generator Air conditioning raw water circulating pump Two Cruisair air conditioning  
compressor units [crew/galley, salon] 24-Volt fuel transfer pump to manifold Manual fuel transfer  
pump to manifold Kohler 20-kw generators, one port and one starboard 12-Volt battery with cutoff  
switch to each generator Four 12-volt batteries to the port and starboard engines, in covered  
boxes Four 12-volt batteries to MDEC system services in covered box, port Battery switch panel  
to: Port and starboard engine main start Water jet Battery charger supply switches to main engine  
and MDEC batteries MTU engine electronic junction boxes Mastervolt 24-volt battery charger to  
service batteries Mastervolt 24-volt battery charger to engine controls Mastervolt battery charger  
to bow thruster Mastervolt battery charge to Hamilton Jet controls Aluminum "day" fuel tank, port  
and starboard, 1,750-liter each 220-Volt fire/deck wash pump 220-Volt bilge pump with suction  
manifold to: Manual hand operated bilge pump Three CCTV cameras [port and aft forward,  
centerline forward] Shore power circuit breakers Main hydraulic reservoir and control [passarelle,  
garage, tender winches] Hamilton Water Jet back-up control panel Idromar watermaker

---

## Исключения

---

При продаже яхты исключаются личные вещи владельца.

---

## Отказ от ответственности

---

Компания предоставляет описание судна или яхты добросовестно, но не может гарантировать точность этой информации, а также не ручается за техническое состояние. Покупатель должен проинструктировать своих агентов или оценщиков исследовать представленную информацию более подробно, по собственному желанию. Продажа судна или яхты, изменение цены или снятие с продажи будет происходить без предварительного уведомления.

# ФОТОГРАФИИ

**Starboard Side**



**Port Side**



**Aft View**



**Side View**



**Front Deck**



**Aft Deck Starboard View**



**Aft Deck Port View**



**Looking Aft**



**Aft Deck Looking Down To Lounge**



**Salon Looking Forward**



**Salon Looking Aft**



**Salon Looking Forward Port**



**Helm 1**



**Helm 2**



**Helm 3**



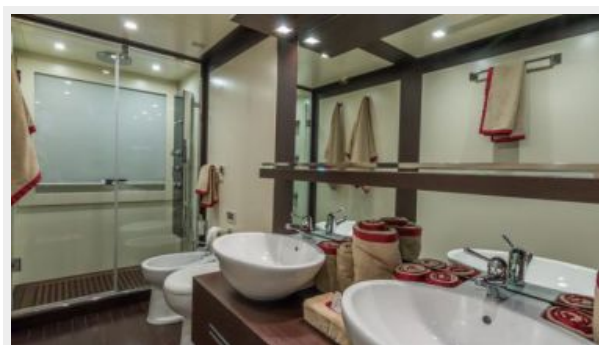
**Master Looking Righ**



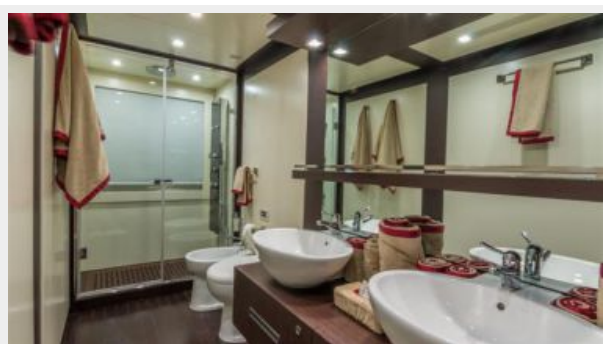
**Master**



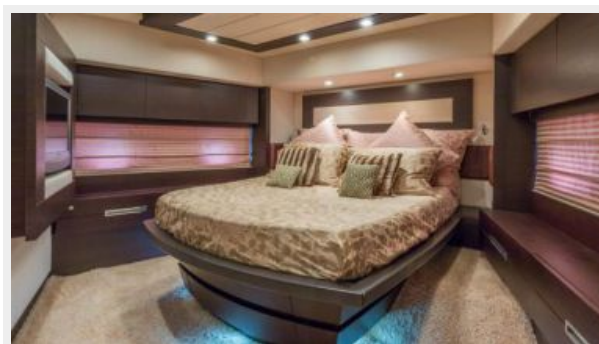
**Master Head 1**



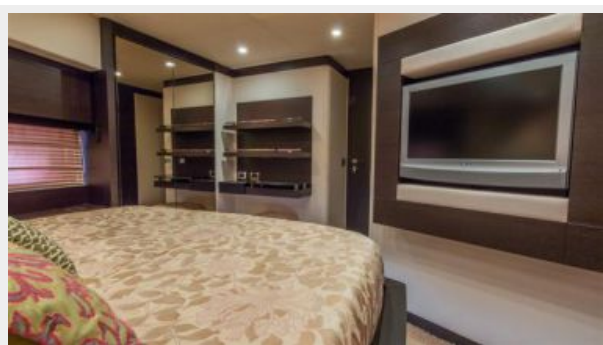
**Master Head 2**



**VIP 1**



**VIP 2**



**VIP Head**



**VIP Head 2**



**Guest Cabin 1**



**Guest Cabin 2**



**Galley**



**Engine Room**



**Lower Deck Layout**



# КОНТАКТЫ

---

Андрей Шестаков (Andrey Shestakov) – ведущий яхтенный брокер отдела продаж яхт и судов компании Shestakov Yacht Sales Inc. Официальный представитель Shestakov Yacht Sales Inc. для русскоговорящих клиентов в центральном офисе компании в Майами/Форт Лодердейл/Флорида/США.

## Контактная информация

---

Email: [andrey@shestakovyachtsales.com](mailto:andrey@shestakovyachtsales.com)

Web: [shestakovyachtsales.com](http://shestakovyachtsales.com)

## Телефоны

---

Краснодарский край: **+7(918)465-66-44**

США, Майами, Флорида: **+1(954)274-4435**

## Время работы

---

Понедельник – Суббота: **9:00 - 21:00**  
EDT

Воскресенье: **Закрито**

## Адрес

---



Harbour Towne Marina, 850 NE 3rd St,  
STE 213, Dania, FL 33004