

HATTERAS 100 RAISED PILOTHOUSE — HATTERAS



Судостроитель: HATTERAS

Год постройки: 2015

Модель: Моторная яхта

Цена: ЦЕНА ЯХТЫ ПО ЗАПРОСУ

Местонахождение: United States

Длина общая: 100' 0" (30.48m)

Ширина: 22' 6" (6.86m)

Макс. осадка: 6' 2" (1.88m)

Купить Hatteras 100 Raised Pilothouse — HATTERAS а также выбрать подходящую вам яхту из нашего каталога яхт вам поможет опытный яхтенный брокер Андрей Шестаков. На сегодняшний день компания Shestakov Yacht Sales Inc. имеет большое количество яхт в собственном списке продаж, а также тесно сотрудничает со всеми крупными яхтенными производителями по всему миру. Для того чтобы купить яхту Hatteras 100 Raised Pilothouse — HATTERAS а также проконсультироваться по любому вопросу связанному с покупкой, продажей, чартером яхт позвоните по телефону **+7(918)465-66-44**.

ОГЛАВЛЕНИЕ

ОГЛАВЛЕНИЕ	2
ХАРАКТЕРИСТИКИ	3
Основная информация	3
Размеры	3
Скорость, вместимость и масса	3
Размещение	3
Корпус и палуба	3
Информация о двигателе	3
ПОДРОБНОЕ ОПИСАНИЕ	4
Manufacturer Description	4
Исключения	5
Отказ от ответственности	6
ФОТОГРАФИИ	7
КОНТАКТЫ	9
Контактная информация	9
Телефоны	9
Время работы	9
Адрес	9

ХАРАКТЕРИСТИКИ

Основная информация

Тип судна: Моторная яхта

Модельный год: 2015

Год постройки: 2015

Страна: United States

Размеры

Длина общая: 100' 0" (30.48m)

Ширина: 22' 6" (6.86m)

Макс. осадка: 6' 2" (1.88m)

Длина привального бруса: 102' 0"
(31.09m)

Скорость, вместимость и масса

Водоизмещение: 275000 Pounds

Вместимость воды: 820 Gallons

Вместимость сточного бака: 419 Gallons Объем топливного бака: 4660 Gallons

Размещение

Всего кают: 5

Всего ком. состава: 5

Корпус и палуба

Материал корпуса: Fiberglass

Информация о двигателе

Двигатели: 2

Производитель: MTU

Модель: 16V2000 CR

Тип топлива: Diesel

ПОДРОБНОЕ ОПИСАНИЕ

Manufacturer Description

The amenities and accommodations found aboard the 100 Raised Pilothouse are typically reserved for vessels much larger in size. She features the largest aft deck and salon in her class, and offers an optional on-deck master suite fit for royalty. Her exterior entertaining spaces are as abundant as the breath-taking views surrounding them. Enjoy the thrill of the adventure from the bow observation lounge, relax on the aft deck and enjoy the breeze, or sun yourself on the richly appointed flybridge. Inside, her luxury knows no end. Exotic hard woods, exquisite craftsmanship, stone countertops, and fine furnishings will have you convinced that this is our finest yacht ever.

This new flagship of the Hatteras motor yacht fleet will be offered as a heavily contented, turnkey package. Everything from zero-speed stabilizers, bow and stern thrusters, and a premium A/V system; to a stocked wine cooler, bathrobes and linens are included. Also included is an electronics allowance that will easily outfit a true captain's pilothouse, equipping her for the demands of cruising in exotic seas across the globe.

Up above is the immense flybridge. Here, you can enjoy a commanding 360-degree view of your favorite port of call while relaxing in either the sun or shade. The design team created an innovative line of modular furniture that allows the flybridge to be tailored to the specific needs of the owner. A luxurious al fresco dining suit, comfortable lounges, large wet bar and more are all available to create a truly unique outdoor space. The helm station found on the flybridge has two captain's chairs and can accommodate up to three monitors as well as the other system controls necessary to run the yacht. The aft deck of the flybridge can be equipped with a davit for a tender and water toys, or an extended furniture layout for more entertaining space. If the latter is chosen, the tender and water toys are located on a hydraulic lift attached to the swim platform.

An observation lounge lies at the bow and an additional dining area can be found on the aft deck under the protection of the flybridge overhang. It features a dinette that can seat up to eight guests, a premium AV system with a drop-down flat-screen LED television and integrated steps to the flybridge and swim platform. Designed with the consummate host in mind, this space can be combined with the salon by opening the large glass entry doors – creating one large living/entertainment space. Like all other Hatteras models, the 100 Raised Pilothouse is built on a solid fiberglass hull bottom that is backed by a ten-year warranty. With its deep tunnel pockets, Nibral high-performance propellers, and efficient gear reductions, the 100 RPH delivers a shallow draft and competitive cruising performance.

Interior Details

As you enter the 100RPH from the main entryway found amidships on the starboard side, the first thing you notice is the open staircase heading up to the pilothouse and flybridge. Aft is the capacious salon and formal dining area. For those that entertain large groups, an optional

oversized bar is available. Large windows reveal sweeping views to both port and starboard, and the aft salon doors open to combine the salon and aft deck social areas into one gigantic living space ready to entertain on a grand scale. Move forward and you are greeted by the large open space of the country-style galley. Equipped with full-size appliances, ample cold storage, a large dinette, and a working island with bar seating; the galley offers the amenities and luxury of home. The galley is also bathed in natural light, made possible by one of the most noticeable features of the 100RPH – the large integrated skylight in the overhead. An optional five-stateroom layout takes advantage of this feature by including it in the on-deck master suite.

Below deck, the 100 RPH provides accommodations for eight in a four-stateroom, four-head layout. The full-beam master suite is truly opulent and well appointed. It sits amidships and features a his-and-hers head, and ample storage in large closet spaces. Portlights on each side bring in natural light, and the exquisitely crafted cabinetry provides the comfort and luxury you expect in a Hatteras. This private owner's retreat is fit for royalty. Heading forward, twin staterooms are located on either side of the companionway with each featuring its own head. At the bow lies the VIP suite. Entering from the same hallway as the rest of the berthing spaces, the VIP suite offers a luxurious private bathroom, a large closet and a full-size queen bed with storage beneath. Each stateroom features a premium A/V package.

The raised pilothouse, found a few steps above the main entrance just off the grand stairway, is truly something to behold. Designed to accommodate an elaborate electronics package, the helm console features multi-use monitors – placing navigation, communication, and ship systems information at the captain's fingertips. Central is the Hatteras Monitoring System that uses touch-screen technology to oversee all ship's systems including RPM, oil pressure, engine diagnostics, fuel and water levels, bilge alarms and more. From the helm chair, the captain has the entire vessel at his fingertips. The pilothouse also includes an L-shaped lounge for guests or crew.

A discrete stairwell just off the aft deck leads below to the crew spaces and engine room. If the pilothouse is the brains of the vessel, this is the heart. The immaculate engine room is home to twin CAT C32 ACERT diesel engines with an output of 1900 bhp each on all standard models. Owners with greater performance in mind can upgrade to twin MTU 16V2000 CR diesel engines rated at 2600 bhp. Systems are centrally located, and all hoses and electrical wiring are secured and labeled for easy access.

The crew space is located just aft of the engine room and can be entered from the aft deck stairwell or from the bustle door in the transom, making access convenient whether tied at the dock or underway. It includes a private stateroom for the captain, and a bunkroom for crew. Each has its own head. A shared galley is located off the companionway and is equipped with a microwave/convection oven, sink and refrigerator.

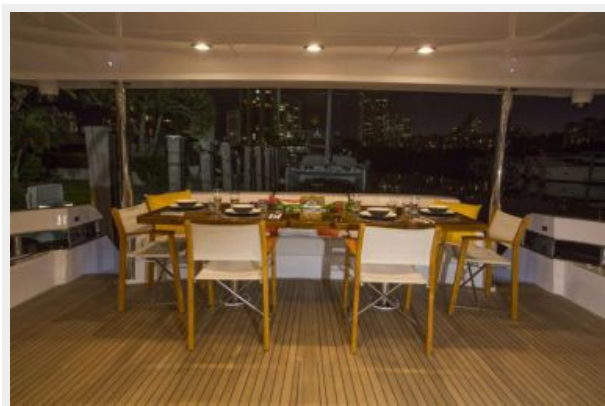
Исключения

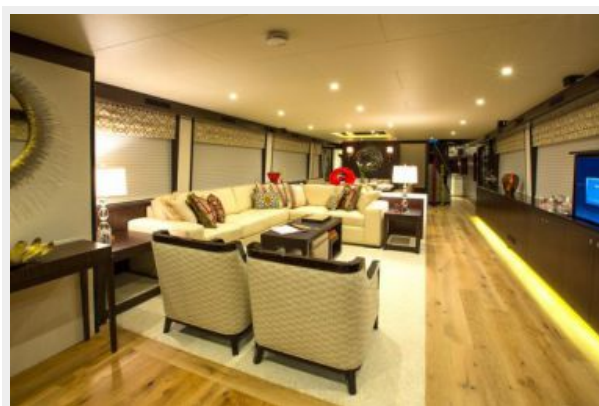
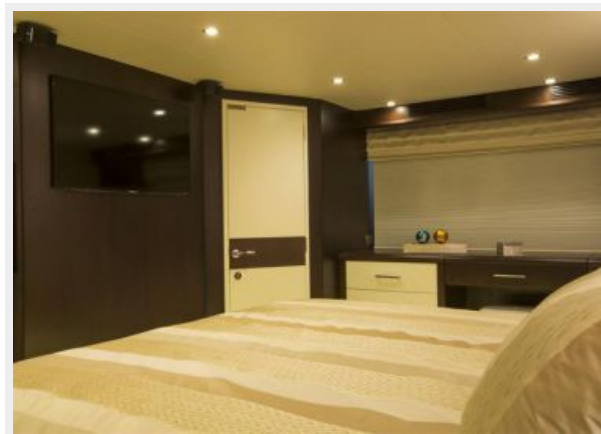
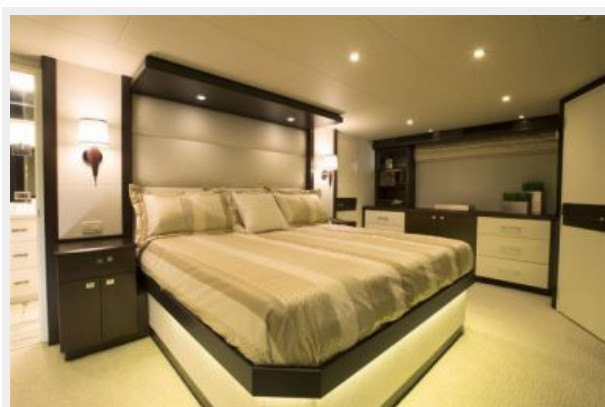
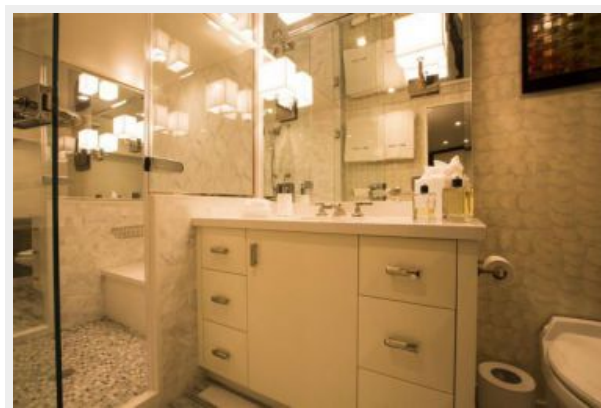
При продаже яхты исключаются личные вещи владельца.

Отказ от ответственности

Компания предоставляет описание судна или яхты добросовестно, но не может гарантировать точность этой информации, а также не ручается за техническое состояние. Покупатель должен проинструктировать своих агентов или оценщиков исследовать представленную информацию более подробно, по собственному желанию. Продажа судна или яхты, изменение цены или снятие с продажи будет происходить без предварительного уведомления.

ФОТОГРАФИИ





КОНТАКТЫ

Андрей Шестаков (Andrey Shestakov) – ведущий яхтенный брокер отдела продаж яхт и судов компании Shestakov Yacht Sales Inc. Официальный представитель Shestakov Yacht Sales Inc. для русскоговорящих клиентов в центральном офисе компании в Майами/Форт Лодердейл/Флорида/США.

Контактная информация

Email: andrey@shestakovyachtsales.com

Web: shestakovyachtsales.com

Телефоны

Краснодарский край: **+7(918)465-66-44**

США, Майами, Флорида: **+1(954)274-4435**

Время работы

Понедельник – Суббота: **9:00 - 21:00**
EDT

Воскресенье: **Закрито**

Адрес



Harbour Towne Marina, 850 NE 3rd St,
STE 213, Dania, FL 33004