

GIAOLA LU — AZIMUT



Builder: [AZIMUT](#)

Year Built: 2006

Model: Motor Yacht

Price: PRICE ON APPLICATION

Location: United States

LOA: 116' 7" (35.53m)

Beam: 24' 1" (7.34m)

Max Draft: 4' 6" (1.37m)

Cruise Speed: 23 Kts. (26 MPH)

Our experienced yacht broker, Andrey Shestakov, will help you choose and buy a yacht that best suits your needs **GIAOLA LU — AZIMUT** from our catalogue. Presently, at Shestakov Yacht Sales Inc., we have a wide variety of yachts available on our sale's list. We also work in close contact with all the big yacht manufacturers from all over the world.

If you would like to buy a yacht **GIAOLA LU — AZIMUT** or would like help answering any questions concerning purchasing, selling or chartering a yacht, please call **+1(954)274-4435**

TABLE OF CONTENTS

TABLE OF CONTENTS	2
SPECIFICATIONS	3
Basic Information	3
Dimensions	3
Speed, Capacities and Weight	3
Accommodations	3
Hull and Deck Information	3
Engine Information	4
DETAILED INFORMATION	5
Construction	5
Dimensions	5
Mechanical	5
Audio & Visual Equipment	6
Galley	7
Tenders	7
Deck Equipment	7
Safety & Fire Protection	7
Accommodations	8
Exclusions	8
Disclaimer	8
PHOTOS	9
CONTACTS	13
Contact details	13
Telephones	13
Office hours	13
Address	13

SPECIFICATIONS

Basic Information

Category: Motor Yacht

Model Year: 2006

Year Built: 2006

Country: United States

Fly Bridge: Yes

Dimensions

LOA: 116' 7" (35.53m)

Beam: 24' 1" (7.34m)

Max Draft: 4' 6" (1.37m)

Speed, Capacities and Weight

Cruise Speed: 23 Kts. (26 MPH)

Gross Tonnage: 248 Pounds

Fuel Capacity: 4756 Gallons

Accommodations

Total Cabins: 5

Sleeps: 10

Crew Cabin: 3

Crew Sleeps: 5

Hull and Deck Information

Hull Material: Fiberglass

Engine Information

Engines: 2

Manufacturer: MTU

Model: 16V2000 M91

DETAILED INFORMATION

Construction

GIAOLA-LU was built in 2006 by Azimut. Hull designed was completed by Stefano Righini and she features interior design by Carlo Galeazzi. She has a RINA classification and is built with composite material, featuring teak decks on the main deck.

Dimensions

General

Length Overall:	116.48 feet (35.50 meters)
Length at Waterline (LWL):	95.67 feet (29.16 meters)
Beam (molded):	24.28 feet (7.40 meters)
Draft (loaded):	6.56 feet (2.00 meters)
Tonnage:	190 gross tons; 60 net tons

Capacities

Fuel Capacity:	4,756 US gallons (18,000 liters)
Water Capacity:	740 US gallons (2,800 liters)
Watermakers:	Hydromar (120 liters/hr)

Speed

	Speed	Consumption per hour (per engine)	RPM
Maximum:	22.0	240 lt/hr	2,150
Cruising:	15.5	181 lt/hr	1,700
Economical:	12.1	76 lt/hr	1,300

Mechanical

Main Engines

Engine Type:	(2) MTU 16V2000 M-91 @ 2,000 Hp each
Gearboxes for Main Engines:	ZF, 2,778:1 ratio
Drive:	Propeller (Detra 4-blade- NIBRAL)

Generators & Electricity:

Generators:	(2) Kohler 65 kW
Generator Fuel Consumption:	150 liters/day
Output	440 volts, Phase 3, 60 Hz
Shore Power:	SAE 35, 120-580 volts, Phase 3, 50-60 Hz
Rotary Converter:	220 Volts, 35 amps, 60 Hz

Batteries: Main Engine: (2) 12v x 220 alt, charged (Voltmaster 25 alt)
 Generator: (2) 12v x 220 alt, charged (Voltmaster 25 alt)
 General Service: (12) 2v, GEL 24v, charged (Voltmaster 100 alt)
 Emergency: (2) 24v x 100 alt, charged (Voltmaster 25 alt)

Air Conditioning:

Type: Cruiser, 120,000 BTU, 16 air handling units

Other Machinery

Watermakers: Idromar MC3J-1220 lt/hr
 Trim Tabs/Stabilizers: Saim Marine
 Bow Thruster: Yaripeed 616G5, 100 Hp
 Steering System: BCS CO24N-24
 Fresh Water System: Gianceschi (22v and 220 v)
 Helm Stations: (2) Bridge & Flybridge

Audio & Visual Equipment

Communication Systems

VHF: Fixed: ICOM IC-M603
 Handheld: (2) ICOM GMDSS IC GM1600E

Computer: Laptop HP

Printer: HP OfficeJet 4,500 wireless

Navigation Systems

Radar: Raymarine E-80, range 64 miles
 Magnetic Compass: White Star B6W3
 Auto Pilot: Raymarine ST2-90
 Depth Sounder: Raymarine ST2-90
 GPS: Raymarine
 Laser Plotter: Raymarine E-120
 Navtex: JRC-NCR-333

Entertainment System Video Equipment

TV's: (2) Panasonic "Viero" 47"- Salon, Deck Cabin
 (4) Sharp "D-Quos" 17"- VIP Cabin, All Guest cabins, Crew Mess

VCR's: (2) BOSE- Salon, Master Cabin

DVD's: Double Cabin

Audio Equipment

Stereo's: BOSE-Salon

I-POD Station: Salon

Galley

Main Galley Equipment

Cooking Equipment: Vitro: (2) Teka YT-TC-2P.1.2

Oven: Gaggenav

Grill: Gaggenav

Microwave: GE

Refrigeration/Freezer: Frigomar

Icemaker: 3

Wine-Cooler 1

Dishwasher: Bosch-Silence Plus

Trashcompactor: Bosch

Laundry Equipment

Main Laundry Equipment Washer & Dryer: Miele (pantry)

Tenders

Tender & Toys

Tenders: 15' Novamarine, Honda outboard 40 Hp

Other: Waverunner: Seadoo 1200

Motor Scooter: Seadoo 3D

Jacuzzi: Flybridge

Deck Equipment

Deck Equipment

Anchor Windlass System: Maxwell- Serie 6000

Anchors: (2) Hall

Anchor Chain: (2) 100 meter

Deck Capstans: (2) Stern Cockpit, electric

Passerelle: Opacmare- Hydraulic

Safety & Fire Protection

Fire Fighting Equipment

Fire Control System: (12) detectors

(3) 30 KG Fixed CO2

(6) portable CO2 (Garage, machine room, technical room)

Fire Extinguishers: (17) ABC
Seawater Fire Fighting Stations: (2) For & Aft Deck
Safety Equipment
Life Rafts: (2) Arimar- Deep Sea (16 & 12 Pax)
Life Rings: (2)
Flares: Standard Equipment

Accommodations

General

GIAOLA-LU has guest accommodations for up to 11 in 5 staterooms, along with crew accommodations for up to 6 in three cabins. Owner

The master cabin is located amidships on the lower deck. It features a king bed, complete bath with shower and separate Jacuzzi tub. Guests The VIP cabin is located forward on the main deck. It features a complete bath with shower.

The two double cabins are located on the lower deck and they both have private baths with showers. In addition, the twin cabin is also located on the lower deck with two twin beds & Pullman with bath and shower. Crew

The crew accommodations are located in the lower level bow. The captain quarters feature a double bed with private bathroom and shower. The two twin cabins each have two single twin beds and their own bathrooms with showers.

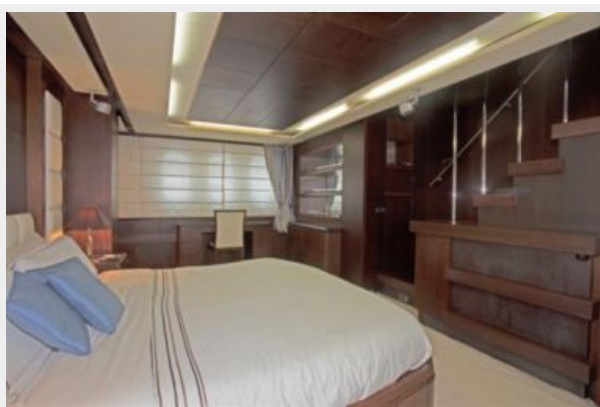
Exclusions

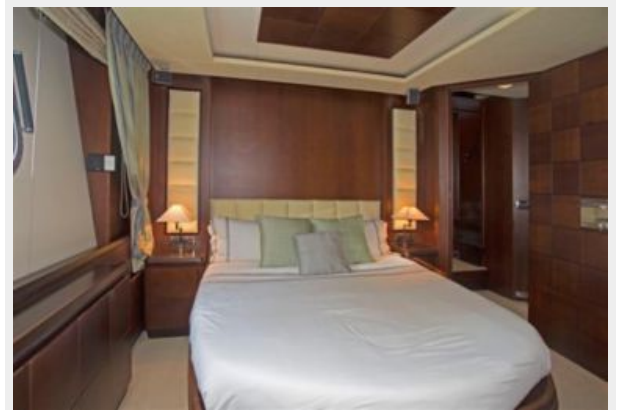
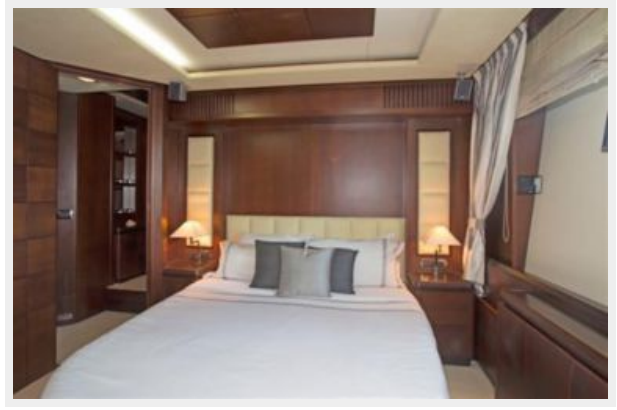
Owner's personal belongings.

Disclaimer

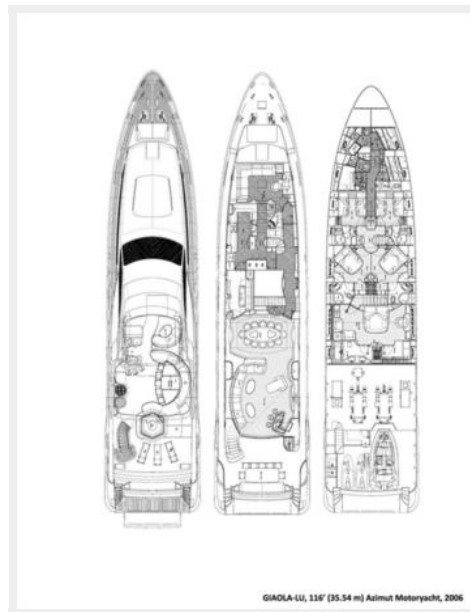
The Company offers the details of this vessel or yacht in good faith but cannot guarantee or warrant the accuracy of this information nor warrant the condition of the vessel. A buyer should instruct his representatives, agents, or his surveyors, to investigate such details as the buyer desires validated. This vessel or yacht is offered subject to prior sale, price change, or withdrawal without notice.

PHOTOS









GIAOLA-LU, 118' (35.54 m) Azimut Motoryacht, 2006

CONTACTS

Andrey Shestakov, leading yacht broker of the sales department of Shestakov Yacht Sales Inc. Shestakov Yacht Sales Inc., the official representative of the Miami/Fort Lauderdale FL headquarters.

Contact details

Email: andrey@shestakovyachtsales.com

Web: shestakovyachtsales.com/en/

Telephones

USA: +1(954)274-4435

Office hours

Monday – Saturday: **9:00 - 21:00** EDT

Sunday: **closed**

Address



Harbour Towne Marina, 850 NE 3rd St,
STE 213, Dania, FL 33004