

NO NAME — CONTENDER



Builder: CONTENDER

Year Built: 2006

Model: Center Console

Price: PRICE ON APPLICATION

Location: United States

LOA: 36' 3" (11.05m)

Beam: 10' 0" (3.05m)

Min Draft: 2' 0" (0.61m)

Cruise Speed: 30.41416847 Kts. (35 MPH)

Max Speed: 49.531645794 Kts. (57 MPH)

Our experienced yacht broker, Andrey Shestakov, will help you choose and buy a yacht that best suits your needs **No Name — CONTENDER** from our catalogue. Presently, at Shestakov Yacht Sales Inc., we have a wide variety of yachts available on our sale's list. We also work in close contact with all the big yacht manufacturers from all over the world.

If you would like to buy a yacht **No Name — CONTENDER** or would like help answering any questions concerning purchasing, selling or chartering a yacht, please call **+1(954)274-4435**

TABLE OF CONTENTS

TABLE OF CONTENTS	2
SPECIFICATIONS	3
Overview	3
Basic Information	3
Dimensions	3
Speed, Capacities and Weight	3
Hull and Deck Information	3
Engine Information	4
DETAILED INFORMATION	5
Features	5
Fishing Equipment	5
Manufacturer Provided Description	6
Disclaimer	6
Exclusions	6
Disclaimer	6
PHOTOS	7
CONTACTS	10
Contact details	10
Telephones	10
Office hours	10
Address	10

SPECIFICATIONS

Overview

Upgraded Electronics: Garmin 7212 GPS, Furuno FCV 295 (1 Kw Transducer), New VHF antennas! TRIPLE 2009 Yamaha F250's - Completed full engine service 06/2015. Atlantic Yacht & Ship will consider trades.

Basic Information

Category: Center Console

Sub Category: Walk-around

Model Year: 2006

Year Built: 2006

Country: United States

Dimensions

LOA: 36' 3" (11.05m)

Beam: 10' 0" (3.05m)

Min Draft: 2' 0" (0.61m)

Speed, Capacities and Weight

Cruise Speed: 30.41416847 Kts. (35 MPH) **Max Speed:** 49.531645794 Kts. (57 MPH)

Displacement: 6000 Pounds

Water Capacity: 45 Gallons

Fuel Capacity: 410 Gallons

Hull and Deck Information

Hull Material: Fiberglass

Hull Color: White

Engine Information

Engines: 3

Manufacturer: Yamaha

Model: 4S - Outboard

Engine Type: Outboard

Fuel Type: Gas

DETAILED INFORMATION

Features

This feature-rich center console designed for triple-engine power delivers high-octane performance and no-excuse fishability. Notable features include dual 50-gallon transom live wells, transom door, step-down storage/head compartment, four insulated fish boxes and an exemplary finish with flawless Gelcoat. This Deep-V can endure serious offshore punishment. With triple 250hp Yamaha outboards (**complete engine service 06/2015**), she tops out at over 55mph. **Additional features include:**

- **Garmin 7212 GPS**
- **Furuno FCV 295 (1kw Transducer)**
- **New VHF Antennas**
- Transom door
- Rear bench seat
- Blue Water leaning post with built in tackle station and foot rest
- Blue Water T-Top Key West style (New Canvas)
- Pop-up cleats
- Console kick instep
- Hand rail
- Deck lighting throughout (LED)
- Underwater lights
- Swim Ladder
- Anchor Storage
- Kenwood stereo with 1500W Amp
- Coaming Bolsters throughout

Fishing Equipment

- **Updated Furuno FCV 295 (1 Kw Transducer)**
- Garmin 7212 GPS
- Coaming Bolsters throughout
- (2) Transom Livewells (clear hatch covers)
- (1) Below Deck livewell
- (6) Encased Livewell pumps
- Forward plumbing for live well
- (36) Lee Rod Holders
- Tackle Station
- Fresh water wash down
- Salt water wash down
- Full Isinglass enclosure

- Top Gun outriggers
- (5) Spreader lights
- (2) Fishing lights on T-Top
- (4) Receptacle Boxes under gunwale 20amp (kite rods)
- (1) 30amp box Deep drop reel plug
- Inside console is painted black to reduce glare

Manufacturer Provided Description

Powered by triple Yamaha 250hp engines, the Contender 36' is untouchable in the open water, and yet, the 36' really proves itself when conditions deteriorate. With 410 gallons of fuel, the 36' will take advantage of greater range while you get there faster, drier, and smoother than the rest. You will enjoy its dual 50-gallon livewells, enormous fish box capacity, and huge storage room on your offshore fishing rampages.

Disclaimer

The Company offers the details of this vessel in good faith but cannot guarantee or warrant the accuracy of this information nor warrant the condition of the vessel. A buyer should instruct his agents, or his surveyors, to investigate such details as the buyer desires validated. This vessel is offered subject to prior sale, price change, or withdrawal without notice.

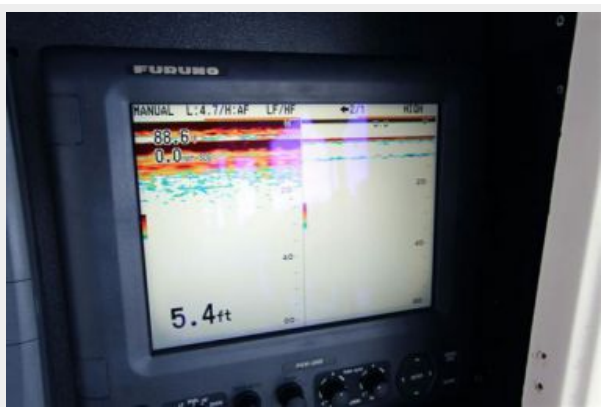
Exclusions

Owner's personal belongings.

Disclaimer

The Company offers the details of this vessel or yacht in good faith but cannot guarantee or warrant the accuracy of this information nor warrant the condition of the vessel. A buyer should instruct his representatives, agents, or his surveyors, to investigate such details as the buyer desires validated. This vessel or yacht is offered subject to prior sale, price change, or withdrawal without notice.

PHOTOS







CONTACTS

Andrey Shestakov, leading yacht broker of the sales department of Shestakov Yacht Sales Inc. Shestakov Yacht Sales Inc., the official representative of the Miami/Fort Lauderdale FL headquarters.

Contact details

Email: andrey@shestakovyachtsales.com

Web: shestakovyachtsales.com/en/

Telephones

USA: +1(954)274-4435

Office hours

Monday – Saturday: **9:00 - 21:00** EDT

Sunday: **closed**

Address



Harbour Towne Marina, 850 NE 3rd St,
STE 213, Dania, FL 33004