

JETSETTER — DYNAMIQ



Builder: DYNAMIQ

Year Built: 2016

Model: Motor Yacht

Price: PRICE ON APPLICATION

Location: Italy

LOA: 126' 8" (38.60m)

Beam: 25' 4" (7.70m)

Min Draft: 5' 3" (1.60m)

Max Draft: 5' 11" (1.80m)

Cruise Speed: 19 Kts. (22 MPH)

Max Speed: 21 Kts. (24 MPH)

Our experienced yacht broker, Andrey Shestakov, will help you choose and buy a yacht that best suits your needs **JETSETTER — DYNAMIQ** from our catalogue. Presently, at Shestakov Yacht Sales Inc., we have a wide variety of yachts available on our sale's list. We also work in close contact with all the big yacht manufacturers from all over the world.

If you would like to buy a yacht **JETSETTER — DYNAMIQ** or would like help answering any questions concerning purchasing, selling or chartering a yacht, please call **+1(954)274-4435**

TABLE OF CONTENTS

TABLE OF CONTENTS	2
SPECIFICATIONS	4
Overview	4
Basic Information	9
Dimensions	9
Speed, Capacities and Weight	9
Accommodations	10
Hull and Deck Information	10
Engine Information	10
DETAILED INFORMATION	11
Boat Highlights	11
General Characteristics	12
Interior Design	12
Pod Drives	13
Eco-Friendly	13
Hull	14
Sundeck	14
Pilothouse	15
Mechanical	15
Remarks	16
Exclusions	16
Disclaimer	16
PHOTOS	17
MAIN SALOON	17
MAIN SALOON DINING	17
MAIN SALOON DINING	17
MASTER CABIN	17
MASTER CABIN	18

MASTER BATH	18
DAY HEAD	18
LOWER DECK GUEST CABIN	18
STAIRCASE	18
LOBBY MAIN DECK	18
POD DRIVE	19
SUN DECK	19
UNDER CONSTRUCTION	19
TENDER	19
CONTACTS	21
Contact details	21
Telephones	21
Office hours	21
Address	21

SPECIFICATIONS

Overview

DYNAMIQ D4

The D4 is a perfect, fast family cruiser just below 40 metres built on a platform designed with a shallow draft of only 1.8 meters – ideal for the Caribbean, Mediterranean or Asian islands. With the largest sundeck in her class and four luxury guest cabins, she is the perfect realisation of top comfort in a practical and relatively compact size. Thanks to an efficient and light aluminium hull, D4 combines top speed of 21 knots with transatlantic range of 3000 miles. The first D4 will be available for summer 2016 and is packed with options.

OPTIONS INCLUDED 2016 D4: Deluxe cushions Whirlpool Roman Public 255 sun deck pool "All weather" package (Wind breaking doors and IR heating) Exterior HUE lights Additional under water lights Forward flagstaff Sky light on sun deck XIR Laminated glass grey Jetski foundations Bowers & Wilkins high-end acoustics Sundeck cinema and disco package Panasonic bow camera Miele electric BBQ on sundeck 2x wine coolers in main saloon Wi-Fi hotspot

YACHT SHOWS PARTICIPATION

The Owner shall grant the use of the yacht for display at the Monaco Yacht Show 2016 and Fort Lauderdale International Boat Show. All participation costs associated with the shows and transatlantic crossing will be borne by Dynamiq

GENERAL CHARACTERISTICS

Type of Yacht Aluminium round bilge single deck motor yacht

Exterior Design DYNAMIQ yachts

Interior Design Bannenberg and Rowell

Naval Architecture Azure Naval Architects BV

Length Overall 38.6m

Beam 7.7m

Draft 1.7m approx. at half load

Displacement 150t approx. light ship

Gross Tonnage 250GT

Accommodation 8 Guests

6 crew including Captain

Speed 21 knots at half load

Cruising Speed 19 knots at half load (85% MCR)

Range at 10 knts 3000nm

Classification RINA commercial yacht short range, green plus, comfort class, LY3 compliant

Flag Malta

Main Engines 2 x MAN D2862LE433 (1324KW@2300rpm)

Propulsion 2 x Fortjes 4000 pods with counter rotating propellers

Generators 2 x Kohler 53KW

Bow Thruster 30KW

Stabilisers CMC electrical fins, zero speed capable

Construction Welded Aluminium Hull and Superstructure and Mast

Fuel Capacity 25000 L approx.

Fresh water capacity 7000 L approx.

Lube Oil 850 L approx.

Dirty Oil 850 L approx.

Black/Grey Water 5000 L approx.

Bilge Water 850 L approx.

INTERIOR DESIGN BY BANNENBERG & ROWELL

Dynamiq D4 features elegant, contemporary interiors created by Bannenberg & Rowell Design. Based in Fulham, London, the B&R studio draws on the heritage of the late great Jon Bannenberg and remains one of the most important superyacht design houses in the world. Guest areas are impeccably finished with precious Carrara marbles, Loro Piana fabrics, Spinneyback and Foglizzo natural leather.

Bathroom fixtures and fittings come from legendary Parisian company THG, who have been producing exclusive designs in the finest materials for more than 50 years. Dynamiq has drawn from THG's Profil collection to equip the guest bathrooms and dayheads throughout the yacht.

A set of Fidelio silver plated cutlery from master makers Christofle is included as standard. The 12-person, 48-piece flatware set combines elegance, sophistication and luxury. Christofle has

been producing silverware since 1830 and their cutlery adds another exclusive accent to your yacht.

A full set of glassware from French company Baccarat is offered as an option. Founded in 1764, over the last 250 years Baccarat has come to represent the very highest quality of design and manufacture of crystal glassware. Baccarat is universally recognised as a symbol of superb craftsmanship and French art de vivre.

The audio-visual system comes from Britain's Bowers & Wilkins, one of the world's most respected makers of handcrafted, high-end audio. The system uses 21 high-quality speakers with a total power of 6,120 watts to fill your yacht with pure digital surround sound. The positioning of the speakers has been expertly analysed to ensure optimum output. The saloon features PM1 standalone speakers with carbon braced tweeters that deliver the ultimate in pure audio, as well as working as part of a sophisticated home theatre set-up.

Renowned designer Glyn Peter Machin created the exclusive Dynamiq Collection of deck furniture. His work graces the world's finest real estate and superyachts, imbuing a sophisticated casual theme to furniture that is finished to the highest standards of craftsmanship.

A set of two Louis Vuitton Pegase 65 suitcases, monogrammed with the initials of the owner, comes as standard. The durable Damier canvas cases are housed in a specially designed compartment in the owner's dressing room.

POD DRIVES

Aligned horizontally, Fortjes pods are much more efficient than any system using shafts and propellers. Their positioning outside the hull also means greatly reduced noise and vibration levels, as well as lower emissions. The pods use counter-rotating propellers linked via a compact gearbox to the main engines, reducing engine room space requirements by nearly 18%, which means more accommodation for you and your guests. Built in Germany, Fortjes pods are the perfect compliment to the Dynamiq range of efficient performance yachts.

ENGINES

Dynamiq yachts are offered with the new lightweight, performance engine series from reputable German manufacturer MAN. Offering high tractive power even at low speeds, impressive acceleration and low weight in a compact package, MAN's new range is also designed to meet IMO Tier III targets. Proven reliability gives peace of mind, with the added attraction of a worldwide support network.

RANGE

Every Dynamiq yacht has a transatlantic range. The optimal balance between high speed and long range is due to highly efficient propulsion combined with a lightweight aluminium body and an innovative, low resistance hull shape. The mid-range V12 1,800 MAN option gives a remarkable fuel consumption rating of just 68 litres per hour at 10 knots, and even at a cruising

speed of 19 knots consumption is just 500 litres per hour, significantly outperforming other yachts in the D4's class by as much as 25%.

ECO

Fuel efficient hulls and reduced air conditioning loads are thanks to innovative laminated glass that keeps out the heat of the sun. Advanced thinking applied to emissions control and waste management are all things that Dynamiq has covered to make sure your yacht is a clean environment for you and your guests to enjoy, whilst having a lesser impact on the environment. In fact, we build Dynamiq yachts to meet the stringent requirements of the Green Star Plus standard overseen by Classification society RINA.

STABILISATION

The motion of your yacht at sea and at anchor is critical for comfort on board. That is why Dynamiq uses cutting edge electric stabilizers from CMC Marine to reduce roll underway by up to 85% and at anchor by up to 55%. The electric system has several advantages. The stabilisers are far quieter, more reactive, take up less space and are more power efficient than hydraulic counterparts. With no hydraulic systems running through the yacht there is also no risk of interior damage following a hydraulic system failure.

CABIN POSITIONING

The owner's and guest cabins have been located on the lower deck - in the optimal position on the yacht for minimizing motion in any sea condition and at any speed. It is less than two metres from the longitudinal centre of gravity where the uncomfortable accelerations of the yacht are the lowest of anywhere on board.

CLIMATE CONTROL

No one likes a hot, stuffy environment, but an air conditioning system that simply recirculates air is not much better. Dynamiq yachts feature next-generation Condaria aircon systems that not only cool the air effectively and quietly (with a maximum air speed of 2 meters per second), they also replace the air several times an hour. In addition, our high tech XIR glass – never used on a yacht before – offering superior, 40% reduction in solar heat gain in the interior, meaning the aircon can run more efficiently. Controlling the temperature onboard is easy using Dynamiq's special D-app for iPhone and iPad.

NOISE & VIBRATION

Your onboard comfort is our top priority. Intensive research into reducing sound and vibration and the use of modern insulation materials create a near silent yacht with exceptional acoustic privacy between cabins. Moreover, the innovative pod propulsion system means less noise and vibration when underway than a conventional superyacht.

WEATHER PROTECTION

We haven't just thought about your onboard comfort when inside, we've also applied our experience to the outside areas too. Wind-breaking doors and side glass ensure you are well protected from bad weather. In addition, both the main deck aft seating area and the sundeck dining area can be equipped with infrared heaters so you can enjoy being on deck longer not only when the weather turns cooler, but also when you're cruising higher latitudes.

OPTIMISED HULL

Dynamiq's unique hulls are the foundation of our efficient yacht concept. Two of the biggest names in superyacht naval architecture, both based in The Netherlands, applied their collective expertise to create the hull lines of the Dynamiq series. Drawn by Azure Naval architects and optimized by hydrodynamic specialists Van Oossanen, Dynamiq yachts feature a modified round-bilge design that gives a hull with a remarkably low resistance figure, so Dynamiq yachts are characterized by low fuel consumption while still being capable of high speeds. The design also decreases vertical accelerations in the hull – and that translates to a far more comfortable motion when sailing. Dynamiq's avant-garde styling matches the cutting edge design work that has gone into creating a modern bow shape with a vertical stem. This maximises the waterline length, enhancing performance even more. To keep spray levels low, an integrated spray rail deflects water hitting the bow area.

LOW DRAFT

Want to sneak into that secluded, shallow anchorage, away from all the other superyachts? With a Dynamiq yacht, you can. The D4's hull design means a low draft of just 1.7 metres, giving you access to shallow cruising grounds, bays and anchorages that are beyond the reach of almost any other superyacht. The low draft makes the D4 the perfect choice for cruising areas such as the Bahamas.

HUGE SUNDECK

The huge, 1,290 square foot sundeck is bigger than those found on much larger yachts, and has been created to allow maximum flexibility and functionality. It has been carefully designed with five versatile zones: an aft sunbathing area, an alfresco dining area with optional home theatre, a bar and barbecue zone, a spa pool, and a forward sunbathing area that can also be specified as an optional exterior gym.

XIR GLASS

Dynamiq yachts feature special, next-generation laminated XIR glass with a natural clear appearance that allows maximum light transmission, while keeping solar heat gain at bay. Harmful UV rays are almost completely blocked, and heat transmission reduced by 60%. The result is an interior that offers the vast panoramas of large windows but without the penalty of heat build-up. This means significantly reduced air-conditioning loads and therefore lower running costs. Developed by US-based Southwall Technologies, XIR glass is widely used in the luxury automotive sector.

INTEGRATED BRIDGE

The D4 comes equipped with the custom integrated i-Bridge which controls everything from navigation to security and systems monitoring. Four huge 24 inch displays and a touch panel create a clean, contemporary look. Bridge specialists TEAM Italia developed the i-Bridge system with input from experienced superyacht captains to ensure the best functionality.

Basic Information

Category: Motor Yacht

Sub Category: Ocean Going

Model Year: 2016

Year Built: 2016

Country: Italy

Dimensions

LOA: 126' 8" (38.60m)

LWL: 121' 9" (37.10m)

Beam: 25' 4" (7.70m)

Min Draft: 5' 3" (1.60m)

Max Draft: 5' 11" (1.80m)

MFG Length: 126' 8" (38.60m)

Speed, Capacities and Weight

Cruise Speed: 19 Kts. (22 MPH)

Cruise Speed Range: 3000

Max Speed: 21 Kts. (24 MPH)

Displacement: 328488.77038 Pounds

Gross Tonnage: 250 Pounds

Water Capacity: 1849.204364 Gallons

Holding Tank: 1320.86026 Gallons

Fuel Capacity: 6604.3013 Gallons

Fuel Consumption: 17.963699536 Gallons

Accommodations

Total Cabins: 4	Total Berths: 8
Sleeps: 8	Total Heads: 5
Crew Cabin: 3	Crew Berths: 6
Crew Sleeps: 6	Crew Heads: 3

Hull and Deck Information

Hull Material: Aluminum	Deck Material: Teak
Hull Configuration: Full Displacement	Hull Color: BLUE & METALLIC SILVER
Hull Finish: Aluminum	Hull Designer: AZURE NAVAL ARCHITECTS
Exterior Designer: DYNAMIQ YACHTS	Interior Designer: BANNENBERG & ROWELL

Engine Information

Engines: 2	Manufacturer: MAN
Model: D2862LE433	Engine Type: Inboard
Fuel Type: Diesel	

DETAILED INFORMATION

Boat Highlights

DYNAMIQ D4 The D4 is a perfect, fast family cruiser just below 40 metres built on a platform designed with a shallow draft of only 1.8 metres – ideal for the Caribbean, Mediterranean or Asian islands. With the largest sundeck in her class and four luxury guest cabins, she is the perfect realisation of top comfort in a practical and relatively compact size. Thanks to an efficient and light aluminium hull D4 combines top speed of 21 knots with transatlantic range of 3000 miles. The first D4 will be available for summer 2016 and is packed with options.

Options included 2016 D4:

- Deluxe cushions
- Whirlpool Roman Public 255 sun deck pool
- "All weather" package (Wind breaking doors and IR heating)
- Exterior HUE lights
- Additional under water lights
- Forward flagstaff
- Sky light on sun deck
- XIR Laminated glass grey
- Jetski foundations
- Bowers & Wilkins high-end acoustics
- Sundeck cinema and disco package
- Panasonic bow camera
- Miele electric BBQ on sundeck
- 2 x wine coolers in main saloon
- Wi-Fi hotspot

YACHT SHOWS PARTICIPATION The Owner shall grant the use of the yacht for display at the Monaco Yacht Show 2016 and Fort Lauderdale International Boat Show. All participation costs associated with the shows and transatlantic crossing will be borne by Dynamiq

@PAGEBREAK@

General Characteristics

Type of Yacht	Aluminium round bilge single deck motor yacht
Exterior Design	DYNAMIQ yachts
Interior Design	Bannenberg and Rowell
Naval Architecture	Azure Naval Architects BV
Length Overall	38.6m
Beam	7.7m
Draft	1.7m approx. at half load
Displacement	150t approx. light ship
Gross Tonnage	250 GT
Accommodation	8 Guests 6 Crew including Captain
Speed	21 knots at half load
Cruising Speed	19 knots at half load (85% MCR)
Range at 10 knots	3000nm
Classification	RINA commercial yacht short range, green plus, comfort class, LY3 compliant
Flag	Malta
Main Engines	2 x MAN D2862LE433 (1324KW@2300rpm)
Propulsion	2 x Fortjes 4000 pods with counter-rotating propellers
Generators	2 x Kohler 53KW
Bow Thruster	30 KW
Stabilisers	CMC electrical fins, zero-speed capable
Construction	Welded Aluminium Hull and Superstructure and Mast
Fuel Capacity	25000 L approx.
Fresh Water Capacity	25000 L approx.
Lube Oil	850 L approx.
Dirty Oil	850 L approx.
Black/Grey Water	5000 L approx.
Bilge Water	850 L approx.

@PAGEBREAK@

Interior Design

Dynamiq D4 features elegant, contemporary interiors created by Bannenberg & Rowell Design. Based in Fulham, London, the B&R studio draws on the heritage of the late great Jon Bannenberg and remains one of the most important superyacht design houses in the world.

Guest areas are impeccably finished with precious Carrara marbles, Loro Piana fabrics, Spinneyback and Foglizzo natural leather.

Bathroom fixtures and fittings come from legendary Parisian company THG, who have been producing exclusive designs in the finest materials for more than 50 years. Dynamiq has drawn from THG's Profil collection to equip the guest bathrooms and dayheads throughout the yacht.

A set of Fidelio silver plated cutlery from master makers Christofle is included as standard. The 12-person, 48-piece flatware set combines elegance, sophistication and luxury. Christofle has been producing silverware since 1830 and their cutlery adds another exclusive accent to your yacht.

A full set of glassware from French company Baccarat is offered as an option. Founded in 1764, over the last 250 years Baccarat has come to represent the very highest quality of design and manufacture of crystal glassware. Baccarat is universally recognised as a symbol of superb craftsmanship and French art de vivre.

The audio-visual system comes from Britain's Bowers & Wilkins, one of the world's most respected makers of handcrafted, high-end audio. The system uses 21 high-quality speakers with a total power of 6,120 watts to fill your yacht with pure digital surround sound. The positioning of the speakers has been expertly analysed to ensure optimum output. The saloon features PM1 standalone speakers with carbon braced tweeters that deliver the ultimate in pure audio, as well as working as part of a sophisticated home theatre set-up.

Renowned designer Glyn Peter Machin created the exclusive Dynamiq Collection of deck furniture. His work graces the world's finest real estate and superyachts, imbuing a sophisticated casual theme to furniture that is finished to the highest standards of craftsmanship.

A set of two Louis Vuitton Pegase 65 suitcases, monogrammed with the initials of the owner, comes as standard. The durable Damier canvas cases are housed in a specially designed compartment in the owner's dressing room. @PAGEBREAK@

Pod Drives

Aligned horizontally, Fortjes pods are much more efficient than any system using shafts and propellers. Their positioning outside the hull also means greatly reduced noise and vibration levels, as well as lower emissions. The pods use counter-rotating propellers linked via a compact gearbox to the main engines, reducing engine room space requirements by nearly 18%, which means more accommodation for you and your guests. Built in Germany, Fortjes pods are the perfect compliment to the Dynamiq range of efficient performance yachts.

Eco-Friendly

Fuel efficient hulls and reduced air conditioning loads are thanks to innovative laminated glass

that keeps out the heat of the sun. Advanced thinking applied to emissions control and waste management are all things that Dynamiq has covered to make sure your yacht is a clean environment for you and your guests to enjoy, whilst having a lesser impact on the environment. In fact, we build Dynamiq yachts to meet the stringent requirements of the Green Star Plus standard overseen by Classification society RINA.

XIR GLASS

Dynamiq yachts feature special, next-generation laminated XIR glass with a natural clear appearance that allows maximum light transmission, while keeping solar heat gain at bay. Harmful UV rays are almost completely blocked, and heat transmission reduced by 60%. The result is an interior that offers the vast panoramas of large windows, but without the penalty of heat build-up. This means significantly reduced air-conditioning loads and therefore lower running costs. Developed by US-based Southwall Technologies, XIR glass is widely used in the luxury automotive sector. @PAGEBREAK@

Hull

OPTIMISED HULL

Dynamiq's unique hulls are the foundation of our efficient yacht concept. Two of the biggest names in superyacht naval architecture, both based in The Netherlands, applied their collective expertise to create the hull lines of the Dynamiq series. Drawn by Azure Naval Architects and optimised by hydrodynamic specialists Van Oossanen, Dynamiq yachts feature a modified round-bilge design that gives a hull with a remarkably low resistance figure, so Dynamiq yachts are characterised by low fuel consumption while still being capable of high speeds. The design also decreases vertical accelerations in the hull – and that translates to a far more comfortable motion when sailing. Dynamiq's avant-garde styling matches the cutting edge design work that has gone into creating a modern bow shape with a vertical stem. This maximises the waterline length, enhancing performance even more. To keep spray levels low, an integrated spray rail deflects water hitting the bow area.

LOW DRAFT

Want to sneak into that secluded, shallow anchorage, away from all the other superyachts? With a Dynamiq yacht, you can. The D4's hull design means a low draft of just 1.7 metres, giving you access to shallow cruising grounds, bays and anchorages that are beyond the reach of almost any other superyacht. The low draft makes the D4 the perfect choice for cruising areas such as the Bahamas.

Sundeck

The huge, 1,290 square foot sundeck is bigger than those found on much larger yachts, and has been created to allow maximum flexibility and functionality. It has been carefully designed with

five versatile zones: an aft sunbathing area, an alfresco dining area with optional home theatre, a bar and barbecue zone, a spa pool, and a forward sunbathing area that can also be specified as an optional exterior gym.

Pilothouse

INTEGRATED BRIDGE The D4 comes equipped with the custom integrated i-Bridge which controls everything from navigation to security and systems monitoring. Four huge 24 inch displays and a touch panel create a clean, contemporary look. Bridge specialists TEAM Italia developed the i-Bridge system with input from experienced superyacht captains to ensure the best functionality.

@PAGEBREAK@

Mechanical

ENGINES Dynamiq yachts are offered with the new lightweight, performance engine series from reputable German manufacturer MAN. Offering high tractive power even at low speeds, impressive acceleration and low weight in a compact package, MAN's new range is also designed to meet IMO Tier III targets. Proven reliability gives peace of mind, with the added attraction of a worldwide support network.

RANGE

Every Dynamiq yacht has a transatlantic range. The optimal balance between high speed and long range is due to highly efficient propulsion, combined with a lightweight aluminium body and an innovative low resistance hull shape. The mid-range V12 1,800 MAN option gives a remarkable fuel consumption rating of just 68 litres per hour at 10 knots. Even at a cruising speed of 19 knots, consumption is just 500 litres per hour, significantly outperforming other yachts in the D4's class by as much as 25%.

STABILISATION

The motion of your yacht at sea and at anchor is critical for comfort on board. That's why Dynamiq uses cutting edge electric stabilisers from CMC Marine to reduce roll underway by up to 85% and at anchor by up to 55%. The electric system has several advantages. The stabilisers are far quieter, more reactive, take up less space and are more power efficient than hydraulic counterparts. With no hydraulic systems running through the yacht there is also no risk of interior damage following a hydraulic system failure.

NOISE & VIBRATION

Your onboard comfort is our top priority. Intensive research into reducing sound and vibration and the use of modern insulation materials create a near silent yacht with exceptional acoustic

privacy between cabins. Moreover, the innovative pod propulsion system means less noise and vibration when underway than a conventional superyacht.

@PAGEBREAK@

Remarks

CLIMATE CONTROL No one likes a hot, stuffy environment, but an air conditioning system that simply recirculates air is not much better. Dynamiq yachts feature next-generation Condaria aircon systems that not only cool the air effectively and quietly (with a maximum air speed of 2 metres per second), they also replace the air several times an hour. In addition, our high tech XIR glass – never used on a yacht before – offers a superior 40% reduction in solar heat gain in the interior, meaning the aircon can run more efficiently. Controlling the temperature onboard is easy using Dynamiq's special D-app for iPhone and iPad.

WEATHER PROTECTION

We haven't just thought about your onboard comfort when inside, we have also applied our experience to the outside areas too. Wind-breaking doors and side glass ensure you are well protected from bad weather. In addition, both the main deck aft seating area and the sundeck dining area can be equipped with infrared heaters so you can enjoy being on deck longer not only when the weather turns cooler, but also when you're cruising higher latitudes.

Exclusions

Owner's personal belongings.

Disclaimer

The Company offers the details of this vessel or yacht in good faith but cannot guarantee or warrant the accuracy of this information nor warrant the condition of the vessel. A buyer should instruct his representatives, agents, or his surveyors, to investigate such details as the buyer desires validated. This vessel or yacht is offered subject to prior sale, price change, or withdrawal without notice.

PHOTOS



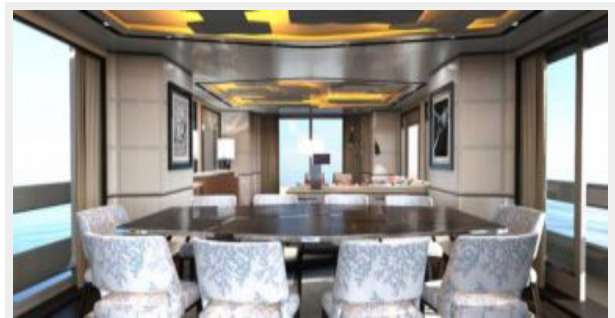
MAIN SALOON



MAIN SALOON DINING



MAIN SALOON DINING



MASTER CABIN



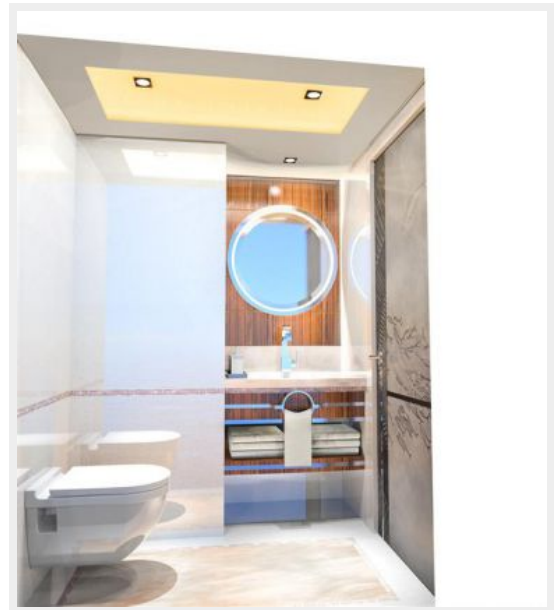
MASTER CABIN



MASTER BATH



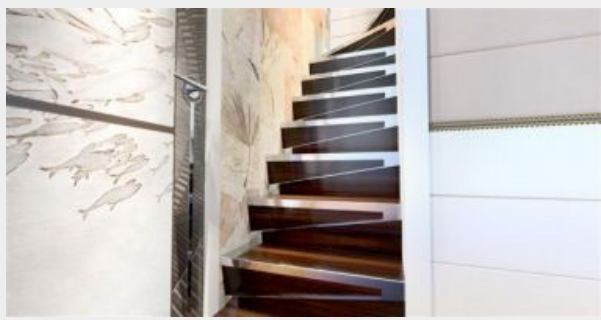
DAY HEAD



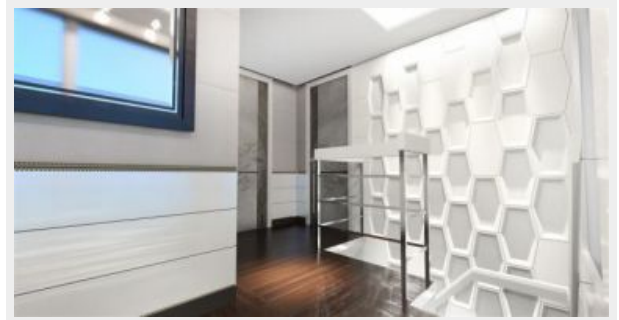
LOWER DECK GUEST CABIN



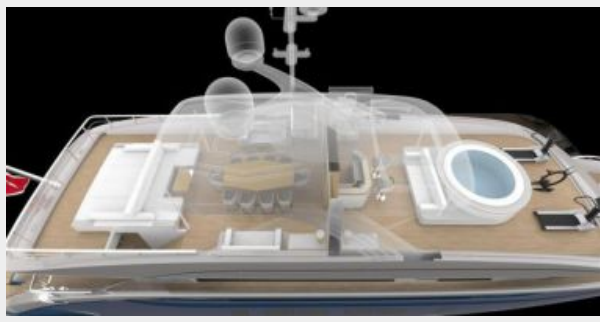
STAIRCASE



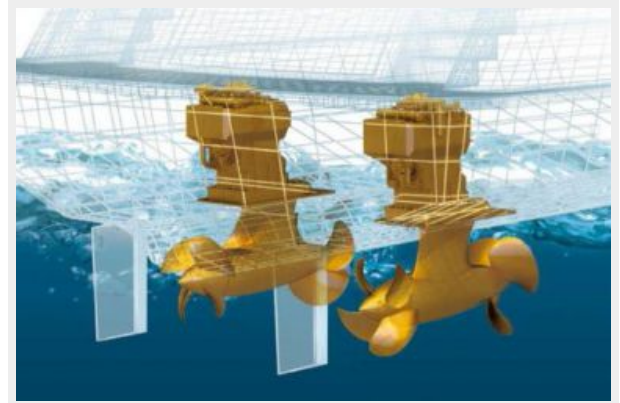
LOBBY MAIN DECK



SUN DECK



POD DRIVE



TENDER



UNDER CONSTRUCTION





CONTACTS

Andrey Shestakov, leading yacht broker of the sales department of Shestakov Yacht Sales Inc. Shestakov Yacht Sales Inc., the official representative of the Miami/Fort Lauderdale FL headquarters.

Contact details

Email:
andrey@shestakovyachtsales.com

Web: shestakovyachtsales.com/en/

Telephones

USA: **+1(954)274-4435**

Office hours

Monday – Saturday: **9:00 - 21:00 EDT**

Sunday: **closed**

Address



Harbour Towne Marina, 850 NE 3rd St,
STE 213, Dania, FL 33004