

GEAR JAMMER — HATTERAS



Builder: HATTERAS

Year Built: 2013

Model: Sport Fisherman

Price: PRICE ON APPLICATION

Location: United States

LOA: 63' 0" (19.20m)

Beam: 20' 0" (6.10m)

Min Draft: 5' 0" (1.52m)

Max Draft: 5' 0" (1.52m)

Cruise Speed: 34 Kts. (39 MPH)

Max Speed: 40 Kts. (46 MPH)

Our experienced yacht broker, Andrey Shestakov, will help you choose and buy a yacht that best suits your needs **Gear Jammer — HATTERAS** from our catalogue. Presently, at Shestakov Yacht Sales Inc., we have a wide variety of yachts available on our sale's list. We also work in close contact with all the big yacht manufacturers from all over the world.

If you would like to buy a yacht **Gear Jammer — HATTERAS** or would like help answering any questions concerning purchasing, selling or chartering a yacht, please call **+1(954)274-4435**

TABLE OF CONTENTS

TABLE OF CONTENTS	2
SPECIFICATIONS	4
Overview	4
Basic Information	4
Dimensions	4
Speed, Capacities and Weight	5
Accommodations	5
Hull and Deck Information	5
Engine Information	5
DETAILED INFORMATION	6
Options and Upgrades	6
Electronics Options	6
Vessel Description	7
Interior Details	7
Exterior Finish and Construction	8
Optional Enclosed Flybridge	8
Cockpit	9
Salon	10
Master Stateroom	11
Master Head	12
Forward VIP Stateroom	12
Forward VIP Head	13
Port Aft Guest Stateroom	13
Port Forward Guest Stateroom	14
Guest Head	14
Companionway	15
Hardware and Miscellaneous	15
Electrical Systems	16

Engine Compartment and Bilge	17
Exclusions	18
Disclaimer	18
PHOTOS	19
CONTACTS	33
Contact details	33
Telephones	33
Office hours	33
Address	33

SPECIFICATIONS

Overview

Featured in the Upcoming Palm Beach Boat Show Ramp 8, March 17-20! **ANOTHER PRICE REDUCTION**, now asking \$2,890,000! Hatteras GT63 Enclosed Bridge

Loaded with Options and Extras, Rigged and Ready for Fishing

Cherry Finish Interior Wood With Raised Panels

Interior Staircase to Enclosed Bridge

C-32A 1900hp Engines w/ 480hrs

Twin Generators

Ice Chipper and Water Maker

Full Garmin Electronics Suite

Much More! See Specs for more Details

Basic Information

Category: Sport Fisherman

Sub Category: Convertible

Model Year: 2013

Year Built: 2013

Country: United States

Fly Bridge: Yes

Dimensions

LOA: 63' 0" (19.20m)

LWL: 56' 5" (17.20m)

Beam: 20' 0" (6.10m)

Min Draft: 5' 0" (1.52m)

Max Draft: 5' 0" (1.52m)

Clearance: 15' 8" (4.78m)

Speed, Capacities and Weight

Cruise Speed: 34 Kts. (39 MPH)

Cruise Speed RPM: 2000 Kts.

Max Speed: 40 Kts. (46 MPH)

Max Speed RPM: 2300 Kts.

Displacement: 102000 Pounds

Water Capacity: 270 Gallons

Holding Tank: 150 Gallons

Fuel Capacity: 1900 Gallons

Accommodations

Total Cabins: 4

Total Berths: 6

Sleeps: 8

Total Heads: 3

Hull and Deck Information

Hull Material: Fiberglass

Deck Material: Fiberglass

Hull Configuration: Deep Vee

Hull Color: blue

Hull Designer: Hatteras Yachts

Exterior Designer: Hatteras Yachts

Interior Designer: Hatteras Yachts

Engine Information

Engines: 2

Manufacturer: Caterpillar

Model: C-32A

Engine Type: Inboard

Fuel Type: Diesel

DETAILED INFORMATION

Options and Upgrades

- Enclosed Bridge w/Interior Staircase
- 1900HP C-32A Caterpillar Main Engines
- Additional 21.5Kw generator (total of 2)
- 1275 Gallon Per Day MaxQ+ Watermaker
- 540lbs. Per Day Eskimo Ice Chipper
- Bow Thruster
- Custom Painted Blue Hull
- 1700lb. Maxwell Windlass w/Stainless Steel Anchor Shoot
- Release Marine Battle Saddle, Teak
- Pipewelders Outriggers
- 6 Person Offshore Commander Life Raft w/Hydrostatic Release
- 2x 50amp Retractable Shore Power Cords
- Underwater Lights, LED
- Cockpit Teak Mezzanine Deck
- Back Up Air Conditioning Water Pump
- Back Up Freshwater Pump
- Salon Pneumatic Entry Door
- Raised Panel Wood Doors Throughout
- 2x Salon Bar Stools
- Mirrored Ceilings in Heads
- P&R Canvas Carpet Runner in Salon and Companionway
- 7x Rod Holders on Aft Flybridge Deck Rail
- Spreader Lights on Aft Flybridge Overhang
- Pipewelders Brushed Aluminum Bow Rail

Electronics Options

Main Helm Station:

- 2x 15" Garmin 8215 Touchscreen Multi-Function Display
- 12" Garmin 8212 Touchscreen Multi-Function Display
- Garmin 12KW Marine Radar with 6' Array
- Garmin 2KW In-Hull Transducer
- Garmin GPH20 Autopilot
- XM Satellite Weather
- 2x ICOM VHF Radios
- 3X Cam100 Engine Room Cameras
- ACR: RCL-100D Remote Spotlight

- **FLIR Thermal Imaging Camera**
- **Furuno RD33 Digital Depth Finder**
- **Bow Thruster**
- **2X Caterpillar Electronic Engine Displays**
- **CAT Engine Controls**

Aft Flybridge Helm Station:

- **12" Garmin 8212 Multi-Function Display**
- **ICOM VHF Command Mic**
- **Bow Thruster Control**
- **CAT Engine Controls**

Additional:

- **Tracvision TV6 SAT TV System**
- **Latham TV200 Cockpit Camera and Storage Hard Drive**

Vessel Description

The Hatteras GT63 is designed to be superior to other boats in its class thanks to its elegant styling, fine seakeeping qualities, 41-knot top-end speed, and the pedigree build that has made Hatteras the gold standard among yachtsmen around the globe. The interior accommodations found in the GT63 are not only more spacious, but are designed with a level of sophistication. Larger window framing allows for better views, and beautifully combined wall coverings and exotic woods create a more open layout while continuing to provide a warm and luxurious environment. The GT63 will receive as much attention offshore as it does at the dock thanks to its riveting performance.

Interior Details

The interior represents an evolution for Hatteras. Its large salon and island galley are unrivaled, providing a comfortable space for relaxation, cooking and improved traffic flow. By eliminating the use of boxy window frames around the windows, the GT63 achieves a 270-degree view from the salon deck. Exquisitely crafted built-in furniture is arranged to create a space that feels big and bright, and also makes it easy for passengers to take in the scenery from any seat. A smartly designed island counter is the central focus of the galley design. This feature improves traffic flow and increases cabinet space. Add the optional bar stools, and it becomes a great work area as well as the perfect place to host more guests for dinner.

Sleeping accommodations are forward of the galley and feature a standard four-stateroom, three-head arrangement. The luxuriously appointed master stateroom features a queen-sized double berth along with a large built-in dresser, matching nightstands, and full-length hanging locker. Forward is a beautifully designed master head with same detailed woodwork and cabinetry

found throughout the vessel. In the bow, the VIP stateroom can be configured for a large double berth, or a separate V-berth arrangement. The VIP also has its own private head. On the portside are two bunkrooms separated by the day head. An over-under arrangement in each room allows for comfortable accommodations for crew or guests. Multiple options are available to allow owners the ability to customize the layout to meet their specific needs.

Like all Hatteras yachts, the GT63 is engineered with our trademark propulsion, electrical, and mechanical systems, which are the most robust in the industry. The GT63 is designed to provide best-in-class performance while maintaining the same legendary ride and durability that built the Hatteras brand.

Exterior Finish and Construction

- Isophthalic gelcoat, exterior layer, white (all areas except hull)
- Blister resistant vinylester gel coat, clear (hull)
- Hull and superstructure painted with a premium linear polyester/polyurethane coating for improved cosmetics & increased durability
- Polymer/copper based anti-fouling bottom paint
- Boot stripe, linear polyester/polyurethane coating
- Decks, non-skid surface, polyurethane paint with polymeric beads
- Solid fiberglass, resin-infused hull bottom, with premium vinylester resins
- Hull sides of resin infused composite construction with PVC foam core and premium vinylester resins
- Solid fiberglass, resin-infused longitudinal stringers
- Steel resin infused into longitudinal stringers at key locations to create engine foundations
- Bulkheads, athwartships and interior decks of resin-infused composite construction using PVC foam core
- Painted black mask
- **Custom colored hull Kingston gray/stars and stripes blue UPGRADE**

Optional Enclosed Flybridge

- Systems monitor with programmable logic controller read-out, visual and audible signals for exhaust temperature, alternator, battery voltage, high bilge water, fire warning in engine compartment, fire extinguisher discharge in engine room, AC power loss, smoke detectors, carbon monoxide detectors, and holding tank $\frac{3}{4}$ full monitor
- Icom VHF, Furuno RD30 depth and temp
- Polished anodized welded aluminum ladder, cockpit to bridge deck
- Elevated L-shaped lounge with rod storage
- Adjustable Pompanette helmsman seat at forward station, pedestal mount
- Riding seats, port and starboard
- Fixed frameless windows and windshield with safety glass

- Intermittent electric windshield wipers/washers with controls
- Forward control station with all necessary switches, dimmable lighted instruments, single-lever clutch and throttle controls (electronic) with engine synchronizer emergency back-up, hydraulic power-assisted steering, compass and electric trolling valve control switches
- Pod style aft control with start/stop switches, single-lever clutch and throttle controls (electronic), hydraulic power-assisted steering and tachometers
- Carpeting
- Dry bar with combination refrigerator/icemaker and storage below
- DC AM/FM stereo receiver with CD player and speakers
- AC duplex outlet(s) with ground fault protection
- Fabric headliner installed on track system for service access
- Carbon monoxide detector
- Smoke detector
- Defogger
- Door to aft deck
- DC low level lights
- HVAC control
- Polished anodized welded aluminum rails and stanchions
- Fuel level gauges
- A/C in Enclosed Flybridge SMX HVAC compartment controlled
- **Enclosed flybridge aft control station pedestal stool UPGRADE**
- **Enclosed flybridge interior stairwell UPGRADE**
- **Install drop down LED TV in overhead of Enc Bridge (manually operated mechanism) UPGRADE**
- **Install overhead hatch with privacy cover, Enc Bridge UPGRADE**
- **Enclosed Flybridge countertops – Coastal Countertops Splendor UPGRADE**
- **Enclosed Flybridge aft exterior cushions C-Worthy, Sunbrella UPGRADE**
- **Enclosed Flybridge L-shaped lounge, riding seats UPGRADE**
- **Custom décor – Enc FB throw pillows, console face upholstery, chart flat, bumper, helm seat UPGRADE**
- **Flybridge Teak Accent strip UPGRADE**
- **Pipewelders Outriggers UPGRADE**
- **Clearkote finishing system for outriggers UPGRADE**

Cockpit

- Molded fiberglass, 173 square feet including mezzanine with seating
- Seating with cushions across upper mezzanine
- Polished anodized aluminum ladder to flybridge with acrylic steps
- Transom door
- Fiberglass cockpit boarding step box with storage
- Sliding glass door to deckhouse

- Stereo speakers with volume control
- DC LED overhead lights under flybridge overhang
- Molded-in grab rails on cabinside
- Hatch with chrome plated brass lock to engine compartment
- Freshwater wash down outlet
- Shore water connection with pressure-reducing valve
- Bait and Tackle Center with 3 drawers, cutting board, and gaff storage covered by door
- Bait freezer, 8.0 cubic-foot
- Insulated storage box in mezzanine
- Insulated storage tub
- Two 60-inch fish boxes with macerator, flush in deck
- Storage in steps to deckhouse with chill box in top step
- Lazzarette access through hatch
- Aluminum mounting plate laminated in deck for fighting chair
- Polished stainless-steel rod holders, flush mount, set of 4
- Transom hawsers
- Scuppers in cockpit and cockpit hatches
- Molded-in transom fish box
- Recirculating livewell installed in cockpit transom fishbox
- **Cockpit coaming lights UPGRADE**
- **add'l retractable shore cord UPGRADE**
- **Cockpit lift up coaming gate UPGRADE**
- **Cockpit handheld shower UPGRADE**
- **Cockpit wing board Pompanette rod holders, 6 UPGRADE**
- **Cockpit underwater lights, 1 pair/2 lights, Aqualuma LED UPGRADE**
- **Cockpit mezzanine cushions, C-Worthy, Sunbrella UPGRADE**
- **Cockpit teak mezzanine deck UPGRADE**

Salon

- Carpeting
- Salon aft entry Amtico flooring
- Fabric headliner with wood accents installed on track system for service access
- Sliding glass door to cockpit
- 42" LCD TV
- Bose Lifestyle 35 home theater with AM/FM, CD/DVD, and surround sound speakers
- Icemaker
- Fixed frameless windows with tinted safety glass
- DC LED lighting
- AC duplex outlet(s) with ground fault protection

- L-shaped lounge with rod storage, loose cushions, arm rests and double needle stitching
- Throw pillows
- Carbon monoxide detector
- Smoke detector
- HVAC control
- Polished stainless-steel threshold at salon door
- **Salon Pneumatic entry door UPGRADE**
- **Raised panel doors, wood dinette table and upgraded hardware UPGRADE**
- **Salon bar stool upgrade, pair with footrests UPGRADE**
- **Modified galley island (appliances on fwd side of island) UPGRADE**
- **Galley forward full backsplash – Coastal Countertops Antico Stone UPGRADE**
- **Custom décor – dinette upholstery, Salon sectional sofa, salon/dinette bar stools, salon/dinette throw pillows UPGRADE**

Master Stateroom

- Carpeting
- Fabric headliner on track system for service access
- Fabric covered hullside(s) and bulkhead(s) installed on track system for service access
- Queen-sized berth with upholstered headboard and cedar-lined storage underneath
- Upholstered berth base
- HMC System 1 mattress, spread, throw pillows, pillows, pillow shams, mattress pad and sheets
- Cedar-lined hanging lockers with doors and automatic light
- Nightstands with drawers
- Dresser with drawers
- 32" LCD TV
- Bose 3-2-1 GS with AM/FM and DVD/CD w/speakers
- Full-length mirror
- DC LED lighting
- DC low-voltage lights under berth
- AC duplex outlet(s) with ground fault protection
- Private access to head
- Smoke detector
- Carbon monoxide detector
- HVAC control

Master Head

- Amtico vinyl flooring
- Fabric headliner installed on track system for service access
- Wallcovering
- Solid-surface countertop, backsplash, and side splash with integral sink
- Hardwood baseboards
- Stall shower with door and automatic sump pump
- Storage cabinet with mirror above sink
- Base cabinet to match interior finish with storage
- Towel bar
- Freshwater toilet
- 120 volt AC air freshener blower
- DC LED lighting
- AC duplex outlet(s) with ground fault protection
- Plexi mirror around upper cabinet
- Holding tank 3/4 full indicator lights
- **Convenience Pkg – Plexi mirrored ceilings in heads UPGRADE**
- **Custom décor – Master head wallcovering, Bow head wallcovering, Port head wallcovering UPGRADE**
- **Master head countertop – Coastal Countertops Azul Aran and backsplash Coastal Countertops 3x6” tiles**

Forward VIP Stateroom

- Carpeting
- Fabric headliner installed on track system for service access
- Fabric covered hullside(s) and bulkhead(s) installed on track system for service access
- Queen-sized tapered berth with upholstered headboard and cedar-lined storage underneath
- Upholstered berth base
- HMC System 1 mattress, spread, throw pillows, pillows, pillow shams, mattress pad and sheets
- Cedar-lined hanging/storage lockers with automatic light
- Nightstands, port and starboard
- DC AM/FM stereo receiver with CD player and speakers
- Full-length mirror
- DC LED lighting
- AC duplex outlet(s) with ground fault protection
- Private access to head
- Smoke detector

- Carbon monoxide detector
- HVAC control
- Screened overhead hatch with privacy cover
- **Bow SR TV 19" LCD with DVD stereo in lieu of AM/FM/CD stereo UPGRADE**
- **Bow SR overhead lockers UPGRADE**

Forward VIP Head

- Amtico vinyl flooring
- Fabric headliner installed on track system for service access
- Wallcovering
- Solid-surface countertop, backsplash, and side splash with integral sink
- Hardwood baseboards
- Stall shower with door and automatic sump pump
- Storage cabinet with mirror
- Base cabinet to match interior finish with storage
- Towel bar
- Freshwater toilet
- 120V AC air freshener blower
- DC LED lighting
- AC duplex outlet(s) with ground fault protection
- Plexi-mirror around upper cabinet
- Holding tank 3/4 full indicator lights
- **Plexi mirrored ceilings in heads UPGRADE**
- **Custom décor – Master head wallcovering, Bow head wallcovering, Port head wallcovering UPGRADE**
- **Bow head and port fwd head countertops and full height backsplash – Coastal Countertops Emperador dark brown UPGRADE**

Port Aft Guest Stateroom

- Carpeting
- Fabric headliner installed on track system for service access
- Fabric covered hullside(s) and bulkhead(s) installed on track system for service access
- Over / under berths with storage under lower berth.
- Upholstered berth base(s)
- HMC System 1 mattress, spread, throw pillows, pillows, pillow shams, mattress pad and sheets

- Double cedar-lined hanging lockers with door and automatic light
- Full-length mirror
- DC LED lighting
- AC duplex outlet(s) with ground fault protection
- Private access to head
- Smoke detector
- Carbon monoxide detector
- HVAC control

Port Forward Guest Stateroom

- Carpeting
- Fabric headliner installed on track system for service access
- Fabric covered hullside(s) and bulkhead(s) installed on track system for service access
- Upper/lower berths with storage under lower berth
- Upholstered berth base(s)
- HMC System 1 mattress, spread, throw pillows, pillows, pillow shams, mattress pad and sheets
- Cedar-lined hanging locker with door and automatic light
- Full-length mirror
- DC LED lighting
- AC duplex outlet(s) with ground fault protection
- Smoke Detector
- Carbon monoxide detector
- HVAC control

Guest Head

- Amtico vinyl flooring
- Fabric headliner installed on track system for service access
- Wallcovering
- Solid-surface countertop, backsplash, and side splash with integral sink
- Hardwood baseboards
- Stall shower with door and automatic sump pump
- Storage cabinet with mirror
- Base cabinet to match interior finish with storage
- Towel bar
- Freshwater toilet
- 120V AC air freshener blower
- DC LED lighting
- AC duplex outlet(s) with ground fault protection
- Plexi-mirror around upper cabinet

- Holding tank 3/4 full indicator lights
- **Plexi mirrored ceilings in heads UPGRADE**
- **Custom décor – Master head wallcovering, Bow head wallcovering, Port head wallcovering UPGRADE**
- **Bow head and port fwd head countertops and full height backsplash – Coastal Countertops Emperador dark brown UPGRADE**

Companionway

- Carpeting
- Fabric headliner installed on track system for service access
- Fabric covered hullside(s) and bulkhead(s) installed on track system for service access
- Flush panel doors with door stops to staterooms and head(s)
- Lighted stairway to salon
- DC LED lighting
- Access to port & starboard storage, electric panels, and electric water tank gauge with DC light
- Washer/dryer
- Wainscoting

Hardware and Miscellaneous

- Wood bulkheads, cabinetry and trim with a satin polyester finish in cherry or African mahogany
- All hardware in satin nickel
- Fortress FX-55 anchor, anchor line and hawse pipe
- Bow thruster tube
- Four polished stainless-steel spring line cleats with chafing strips, through bolted in aluminum backing plate
- Polished stainless-steel bow cleats and chocks with chafing strips, through-bolted in aluminum backing plate
- Two polished stainless-steel stern cleats and hawse pipes, through-bolted in aluminum backing plate
- Polished anodized welded aluminum rails on bow, side-deck and flybridge, drilled and tapped in aluminum backing plates
- Fog bell
- Dual air horns
- Zincs on rudders and shafts
- Black braided nylon mooring lines (6)
- Alloy 22 high-strength propeller shafts

- Manganese bronze dripless rudder seals
- Dripless shaft seals with spare seals
- Life jackets (8)
- Life ring
- Portable “drychem” fire extinguishers (4), U.L. approved type in compliance with United States Coast Guard and ABYC standards
- Stainless-steel trim tabs
- Manganese bronze struts
- Stainless-steel rudders
- Propellers, Nibral high performance
- Reboarding steps to cockpit
- Black fenders (3)
- Deck plates for fuel and water fills and waste pump out
- Heavy duty engine couplings
- Anchor locker on bow deck
- **Stainless anchor chute, roller and anchor at the Bow. Install rope/chain optional 1700 lb Maxwell Windless, no pulpit UPGRADE**

Electrical Systems

- Two 24 volt banks of heavy-duty, 12 volt marine batteries (6) mounted in fire retardant fiberglass boxes
- U.L. 1426 listed boat cable, tin-coated with insulation
- Gel/lead acid compatible 240 volt automatic battery charger, 50/60Hz
- Automatic battery paralleling system with switch at control console
- One 240 volt, 50 amp, transformer connected retractable shore cord with over-current protection (cockpit)
- One 240 volt, 50 amp, transformer connected shore cord inlet with cord and over-current protection (cockpit)
- DC LED lights and fixtures
- AC duplex outlet(s) with ground fault protection
- Battery control panel with fuses and isolation switches
- DC electronics panel with magnetic circuit breakers
- AC and DC distribution panels with magnetic circuit breakers
- AC switching panel with source selector switches, volt meter, ammeter, frequency meter, generator start/stop controls, and distribution panel selector switches
- Navigation lights
- Ground fault protection on AC receptacles and AC lighting circuits
- Air conditioning, 50,000 BTU's, with reversecycle heating
- TV antenna, omni-directional
- Ventilation fans in attic space

Engine Compartment and Bilge

- Pultruded fiberglass rudder shelf
- AC fluorescent lights
- DC lights
- DC bilge blower
- Twin diesel, freshwater-cooled main engines with electrically controlled marine gears, neutral interlocks, exhaust silencers, engine hour meters, alternators, fuel filters and seawater strainers
- FM200 fixed fire extinguishing system for engine compartment with automatic and remote manual controls, plus audible and visual discharge signals
- One 21.5kW freshwater-cooled Electronic Quiet Diesel Onan generator(D) with shock mounts, seawater strainer, remote start, fuel/water separator, hour meter, exhaust water separator and sound enclosure
- Polyethylene water lines
- Freshwater connection
- AC compressed air system with air line and regulator
- 24-volt DC bilge and sump pumps: three at 3700 gph, one at 500 gph, with heavy duty float switches and protective guards
- Auxiliary emergency bilge pump, 150 gpm in lazarette
- Bronze/chrome-plated ball-valves through-bolted in solid fiberglass on all underwater through hull fittings with electrical bonding throughout
- Pressurized 230 volt AC freshwater pump
- 230-volt AC 30-gallon electric water heater
- Integral fiberglass fuel tank constructed with fire retardant resin and bronze fittings, and coated with fire-retardant paint
- Polyethylene water tank
- Polyethylene sewage holding tank with 24 volt DC sewage pump, plumbed for dockside pump-out with 3/4 full display and alarm as part of systems monitor programmable logic controller
- 110-volt AC reversible oil changing system for engines, gear and generator with Hatteras patented quick disconnect
- U.L. Marine-listed fuel filter/water separator, generator
- Sealed shower sumps
- U.L. Marine-listed duplex fuel filters/water separators, engines
- Electric fuel priming pumps, engines
- Powder coated grab rails
- Painted polyurethane engine room and bilges
- United States Coast Guard type A1 U.L. Marine listed fuel lines
- Isolated discharge sea chest
- 1" stainless-steel steering tie bar with pivoting self aligning ball joint connection at all cylinder and tie bar connections
- Insulation in deck
- Pick-up sea chests

- DC voltmeter in battery panel
- Start / stop switches and hour meter
- Rubber deck mat between engines
- Transducer well, glycol filled
- **Bow Thruster, 12 in DC electric UPGRADE**
- **Convenience Pkg – Addl 21.5 KW generator UPGRADE**
- **Air conditioning back up sea water pump, plumbed and wired, single UPGRADE**
- **Freshwater AC backup pump UPGRADE**

Exclusions

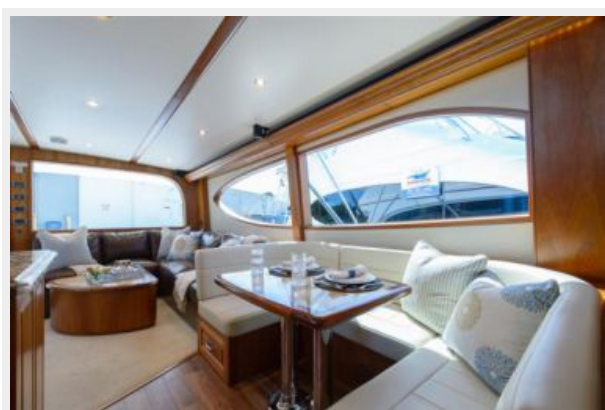
Owner's personal belongings.

Disclaimer

The Company offers the details of this vessel or yacht in good faith but cannot guarantee or warrant the accuracy of this information nor warrant the condition of the vessel. A buyer should instruct his representatives, agents, or his surveyors, to investigate such details as the buyer desires validated. This vessel or yacht is offered subject to prior sale, price change, or withdrawal without notice.

PHOTOS

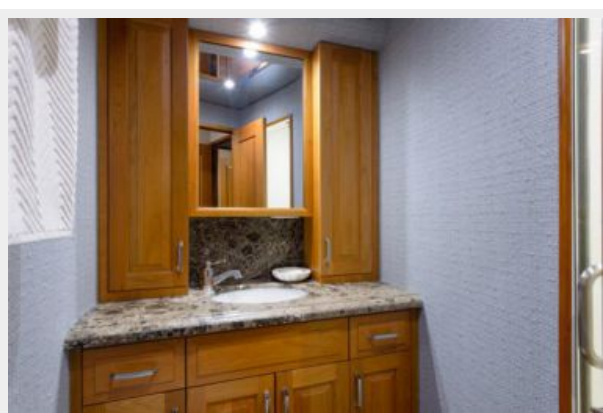




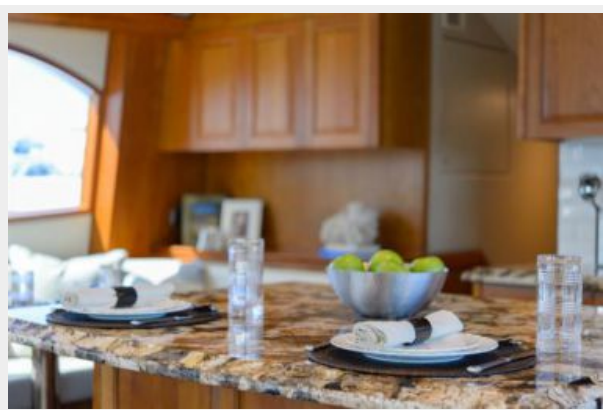


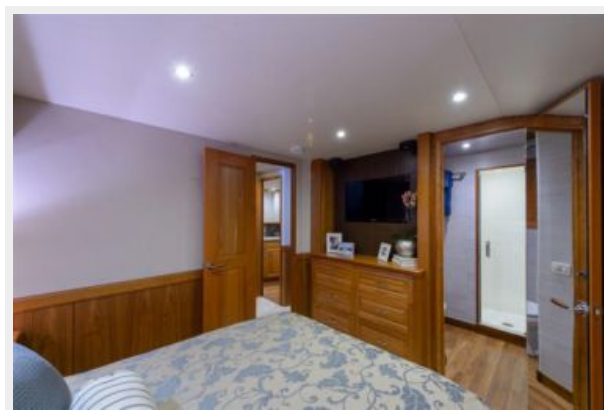
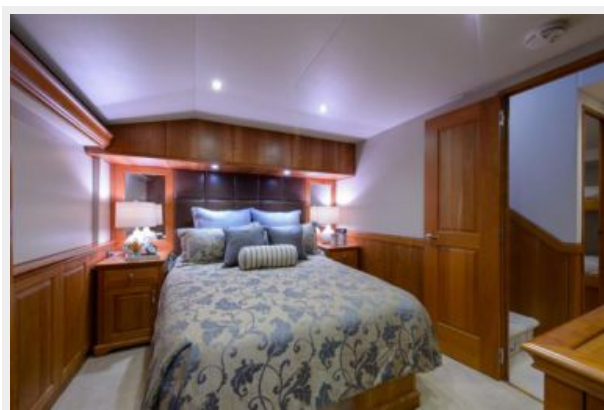






















CONTACTS

Andrey Shestakov, leading yacht broker of the sales department of Shestakov Yacht Sales Inc. Shestakov Yacht Sales Inc., the official representative of the Miami/Fort Lauderdale FL headquarters.

Contact details

Email: **andrey@shestakovyachtsales.com**

Web: shestakovyachtsales.com/en/

Telephones

USA: **+1(954)274-4435**

Office hours

Monday – Saturday: **9:00 - 21:00 EDT**

Sunday: **closed**

Address



Harbour Towne Marina, 850 NE 3rd St,
STE 213, Dania, FL 33004