

MAGADAN — DEFEVER



Builder: DEFEVER

Year Built: 1985

Model: Trawler

Price: PRICE ON APPLICATION

Location: United States

LOA: 48' 0" (14.63m)

Beam: 15' 0" (4.57m)

Max Draft: 5' 3" (1.60m)

Cruise Speed: 8 Kts. (9 MPH)

Max Speed: 11 Kts. (13 MPH)

Our experienced yacht broker, Andrey Shestakov, will help you choose and buy a yacht that best suits your needs **MAGADAN — DEFEVER** from our catalogue. Presently, at Shestakov Yacht Sales Inc., we have a wide variety of yachts available on our sale's list. We also work in close contact with all the big yacht manufacturers from all over the world.

If you would like to buy a yacht **MAGADAN — DEFEVER** or would like help answering any questions concerning purchasing, selling or chartering a yacht, please call **+1(954)274-4435**

TABLE OF CONTENTS

TABLE OF CONTENTS	2
SPECIFICATIONS	4
Overview	4
Basic Information	4
Dimensions	4
Speed, Capacities and Weight	4
Accommodations	5
Hull and Deck Information	5
Engine Information	5
DETAILED INFORMATION	6
Accommodations	6
Galley	6
Electrical	6
Electronics & Navigation	6
Deck & Hull	7
Engine & Mechanical	7
Remarks	7
Exclusions	8
Exclusions	8
Disclaimer	8
PHOTOS	9
Lower Helm	9
Lower Helm	9
Twin V-Berths	9
Twin V-Berths	9
Engine Room	10
Flybridge Helm	10
Transferrable Covered Moorage	10

Covered Walk-Around Decks	10
Bow	11
Port	11
Starboard Port	11
Starboard Stern	11
CONTACTS	12
Contact details	12
Telephones	12
Office hours	12
Address	12

SPECIFICATIONS

Overview

The 48 DeFever Trawler is perfect for cruising the Northwest waters to Alaska. Her full length keel offers directional stability and is a solid long range cruiser for those contemplating extended cruising. With the highly desirable Caterpillar 3208NA engines, stabilizers and bow thruster operation by a couple is simplified.

The three stateroom layout is ideal for taking friends or family cruising in comfort with all amenities needed for long distance cruising.

MAGADAN is kept in covered transferrable moorage in Port of Everett Marina. Bring all offers!

Basic Information

Category: Trawler

Sub Category: Long Range Cruiser

Model Year: 1985

Year Built: 1985

Country: United States

Vessel Top: Open

Fly Bridge: Yes

Cockpit: Yes

Dimensions

LOA: 48' 0" (14.63m)

Beam: 15' 0" (4.57m)

Max Draft: 5' 3" (1.60m)

Speed, Capacities and Weight

Cruise Speed: 8 Kts. (9 MPH)

Max Speed: 11 Kts. (13 MPH)

Displacement: 50000 Pounds

Fuel Capacity: 700 Gallons

Accommodations

Total Cabins: 3

Sleeps: 6

Total Heads: 2

Hull and Deck Information

Hull Material: Fiberglass

Hull Configuration: Full Displacement

Hull Designer: Arthur Defever

Engine Information

Engines: 2

Manufacturer: Caterpillar

Model: 3208 NA

Fuel Type: Diesel

DETAILED INFORMATION

Accommodations

The DeFever 48 is an extremely popular cruising boat because of its 3 stateroom layout, storage capability for cruising, and full galley for entertaining friends and family.

The DeFever 48 Trawler is one of around 100 of this popular model built in the CTF Marine shipyard in Taiwan. Known for their exceptional joinery and quality construction, this yard produced a great cruising boat that became one of their best selling models.

The master stateroom is centerline full beam in the aft section of the boat, next forward over the engine room is the main salon, galley, and lower helm station. Forward and down is the companionway to the guest staterooms. The master stateroom has a double berth with ensuite head and separate shower. The mid-ship stateroom has twin berths and V-berth forward has twin berths. 2 Vacuflush heads and 2 showers. L-shaped dining area with spacious galley.

Galley

- Master Chef oven
- 4-burner propane stove
- Engel freezer/refrigerator
- Tundra 110v/12v reefer system
- Double stainless sink

Electrical

- Westerbeke 8kw generator
- Magnum 2800 inverter
- Magnum charger
- 9 batteries

Electronics & Navigation

- Garmin VHF
- Garmin GPS (2)
- Northstar GPS
- Ritchie compass (2)
- B&G/ International/ Interphase depthsounder (new 2014)
- Garmin radar (new 2014)
- Garmin AID

- ComNav autopilot
- Bon Voyage clock
- Bon Voyage barometer
- Stereo speakers (flybridge & wheelhouse)

Deck & Hull

- Naiad stabilizer (rebuilt in 2011)
- Bow thruster
- Replaced shaft
- Replaced bronze 3-blade props
- Custom convertible arch
- Full walk around decks
- EPIRB
- Nilsson windlass
- Forfjord anchor 8 (galvanized chain & 400' rode)
- Caribe dinghy with Honda 15 hp outboard
- Oars (2)
- Magma BBQ
- Pfd's (8)

Engine & Mechanical

- Twin Caterpillar 3208 NA 210 hp diesel engines (approx. 1937 hrs. 7/2015)
- 5' 6" headroom in large engine room
- Racor fuel filters
- Raw water cooling system
- Halon 1301 in engine room
- Bilge pumps (4) (auto & manual)
- Fire extinguishers (4)
- HRO watermaker
- Hurricane heater
- Vacuflush heads (2)

Remarks

The 48 DeFever Trawler is perfect for cruising the Northwest waters to Alaska. Her full length keel offers directional stability and is a solid long range cruiser for those contemplating extended cruising. With the highly desirable Caterpillar 3208NA engines, stabilizers and bow thruster operation by a couple is simplified.

The three stateroom layout is ideal for taking friends or family cruising in comfort with all amenities needed for long distance cruising.

MAGADAN is kept in covered transferrable moorage in Port of Everett Marina.

Exclusions

All personal gear; loose items; galley gear; CD's; charts; fishing equipment; tools; spare parts; supplies & items not specifically listed on equipment list specifications sheet.

Exclusions

Owner's personal belongings.

Disclaimer

The Company offers the details of this vessel or yacht in good faith but cannot guarantee or warrant the accuracy of this information nor warrant the condition of the vessel. A buyer should instruct his representatives, agents, or his surveyors, to investigate such details as the buyer desires validated. This vessel or yacht is offered subject to prior sale, price change, or withdrawal without notice.

PHOTOS

Lower Helm



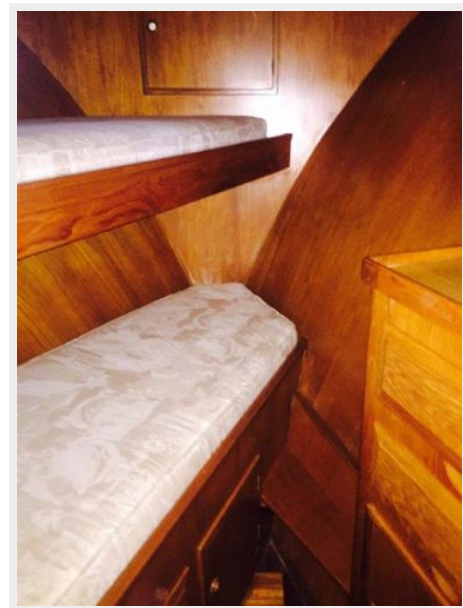
Lower Helm



Twin V-Berths



Twin V-Berths



Engine Room



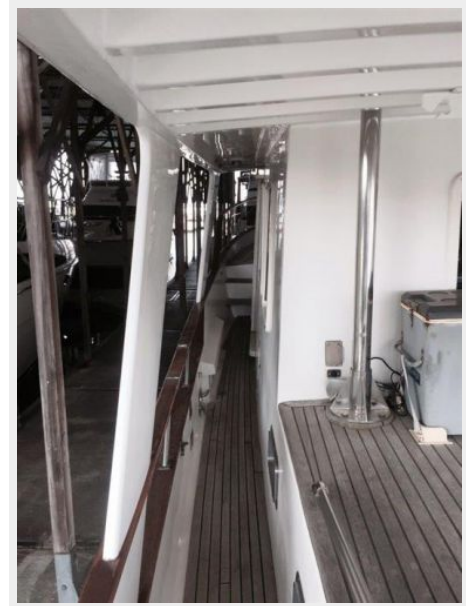
Flybridge Helm



Transferrable Covered Moorage



Covered Walk-Around Decks



Bow



Port



Starboard Stern



Starboard Port



CONTACTS

Andrey Shestakov, leading yacht broker of the sales department of Shestakov Yacht Sales Inc. Shestakov Yacht Sales Inc., the official representative of the Miami/Fort Lauderdale FL headquarters.

Contact details

Email: andrey@shestakovyachtsales.com

Web: shestakovyachtsales.com/en/

Telephones

USA: +1(954)274-4435

Office hours

Monday – Saturday: **9:00 - 21:00** EDT

Sunday: **closed**

Address



Harbour Towne Marina, 850 NE 3rd St,
STE 213, Dania, FL 33004