

GRATEFUL — CHRIS CRAFT



Builder: CHRIS CRAFT

Year Built: 1978

Model: Motor Yacht

Price: PRICE ON APPLICATION

Location: United States

LOA: 45' 0" (13.72m)

Beam: 15' 0" (4.57m)

Min Draft: 4' 2" (1.27m)

Max Draft: 4' 2" (1.27m)

Cruise Speed: 8 Kts. (9 MPH)

Max Speed: 16 Kts. (18 MPH)

Our experienced yacht broker, Andrey Shestakov, will help you choose and buy a yacht that best suits your needs **Grateful — CHRIS CRAFT** from our catalogue. Presently, at Shestakov Yacht Sales Inc., we have a wide variety of yachts available on our sale's list. We also work in close contact with all the big yacht manufacturers from all over the world.

If you would like to buy a yacht **Grateful — CHRIS CRAFT** or would like help answering any questions concerning purchasing, selling or chartering a yacht, please call **+1(954)274-4435**

TABLE OF CONTENTS

TABLE OF CONTENTS	2
SPECIFICATIONS	6
Overview	6
Basic Information	6
Dimensions	6
Speed, Capacities and Weight	6
Accommodations	6
Hull and Deck Information	7
Engine Information	7
DETAILED INFORMATION	8
45' Chris Craft Overview	8
45' Chris Craft Vessel Walkthrough	8
45' Chris Craft Accommodations	8
45' Chris Craft Salon	8
45' Chris Craft Galley	8
45' Chris Craft Dining	9
45' Chris Craft Master Stateroom	9
45' Chris Craft Forward Guest Stateroom	9
45' Chris Craft Port Guest Stateroom	9
45' Chris Craft Lower Helm	9
45' Chris Craft Flybridge	9
45' Chris Craft Sundeck	9
45' Chris Craft Audio/Visual Equipment	10
45' Chris Craft Electronics	10
45' Chris Craft Electrical System	11
45' Chris Craft Engine/Mechanical Equipment	11
45' Chris Craft Deck Equipment	11
45' Chris Craft Tender	12

45' Chris Craft Safety and Fire Protection	12
45' Chris Craft Exclusions	12
45' Chris Craft Disclaimer	12
Exclusions	12
Disclaimer	13
PHOTOS	14
45' Chris Craft port forward profile photo1	14
45' Chris Craft Port Forward Profile	14
45' Chris Craft port aft profile	14
45' Chris Craft starboard forward profile photo1	14
45' Chris Craft Starboard Forward Profile	14
45' Chris Craft Aft Profile	14
45' Chris Craft Anchor Windlass	15
45' Chris Craft Foredeck	15
45' Chris Craft Port Side Deck	15
45' Chris Craft Foredeck Aft	15
45' Chris Craft Starboard Side Deck	16
45' Chris Craft Flybridge Aft	16
45' Chris Craft Flybridge Forward Seating	16
45' Chris Craft Flybridge MFD	16
45' Chris Craft Flybridge Helmseat	17
45' Chris Craft Sundeck Forward	17
45' Chris Craft Sundeck	17
45' Chris Craft Sundeck Port	17
45' Chris Craft Sundeck Starboard	17
45' Chris Craft Lower Helm	17
45' Chris Craft Lower Helm Helmseat	18
45' Chris Craft Lower Helm MFD	18
45' Chris Craft Sundeck Fridge	18

45' Chris Craft Salon Forward	18
45' Chris Craft Salon Aft	19
45' Chris Craft Salon Starboard Forward	19
45' Chris Craft Galley photo1	19
45' Chris Craft Galley photo2	19
45' Chris Craft Master Stateroom	19
45' Chris Craft Master Stateroom Forward	19
45' Chris Craft Master Stateroom Port	20
45' Chris Craft Master Stateroom Starboard	20
45' Chris Craft Master Stateroom Head	20
45' Chris Craft Master Stateroom Shower	20
45' Chris Craft Master Stateroom Tub	20
45' Chris Craft Forward Stateroom	20
45' Chris Craft Guest Head	21
45' Chris Craft Port Guest Stateroom	21
45' Chris Craft Guest Shower	21
45' Chris Craft Engine Room Aft	21
45' Chris Craft Port Main Engine	22
45' Chris Craft Starboard Main Engine	22
45' Chris Craft Water Heater	22
45' Chris Craft Racor Fuel Filters	22
45' Chris Craft Lower Helm Electrical Panel	23
45' Chris Craft Salon Electrical Panel	23
45' Chris Craft Generator photo1	23
45' Chris Craft Generator photo2	23
45' Chris Craft Inverter	23
CONTACTS	24
Contact details	24
Telephones	24

Office hours	24
Address	24

SPECIFICATIONS

Overview

Grateful is a classic 1978 45' Chris Craft Commander offering a 3 stateroom, 2 head layout. She is in good condition and offers some updates, like a newer Radar, chart plotter and inverter. Grateful is a very good liveaboard or Great Loop candidate at an attractive price. Price reduced! Very motivated seller has instructed us to secure any reasonable offer.

Basic Information

Category: Motor Yacht

Sub Category: Aft Cabin

Model Year: 1978

Year Built: 1978

Country: United States

Vessel Top: Bimini Top

Fly Bridge: Yes

Dimensions

LOA: 45' 0" (13.72m)

Beam: 15' 0" (4.57m)

Min Draft: 4' 2" (1.27m)

Max Draft: 4' 2" (1.27m)

Speed, Capacities and Weight

Cruise Speed: 8 Kts. (9 MPH)

Max Speed: 16 Kts. (18 MPH)

Displacement: 39400 Pounds

Water Capacity: 200 Gallons

Holding Tank: 100 Gallons

Fuel Capacity: 500 Gallons

Accommodations

Total Cabins: 3

Total Berths: 6

Sleeps: 6

Total Heads: 2

Hull and Deck Information

Hull Material: Fiberglass

Deck Material: Composite Fiberglass

Hull Color: White

Engine Information

Engines: 2

Manufacturer: Detroit Diesel

Model: 8v71N

Engine Type: Inboard

Fuel Type: Diesel

DETAILED INFORMATION

45' Chris Craft Overview

Grateful is a classic 1978 45' Chris Craft Commander offering a 3 stateroom, 2 head layout. She is in good condition and offers some updates, like a newer Radar, chart plotter and inverter. Grateful is a very good liveaboard or Great Loop candidate at an attractive price. She is presently hauled for hurricane season in Florida, but available for inspection.

45' Chris Craft Vessel Walkthrough

Entering on either side deck, you will walk through a wing door to the sundeck and find a ladder to the flybridge aft, helm forward and salon entrance port forward. Step down into the salon and you will find the galley starboard aft, bar stools and galley bar to starboard, lounge chair starboard forward and L-shaped sofa and table to port. The full beam master stateroom is aft and the two guest staterooms are forward. Engine room access is via salon sole hatches.

45' Chris Craft Accommodations

The full beam master stateroom aft offers two queen size berths and an ensuite head with enclosed shower. There is a guest stateroom forward that offers a v-berth and direct access to the guest head and then a guest stateroom to port that offers over/under bunks. The guest head to starboard offers an enclosed shower.

45' Chris Craft Salon

The salon offers an L-shaped sofa with teak hi/lo table to port, lounge chair starboard forward, a bar and stools to starboard, carpet, opening side windows and a Toshiba flat screen TV.

45' Chris Craft Galley

The galley is located starboard aft in the salon.

- GE side by side refrigerator/freezer
- Princess 3-burner electric cooktop and oven
- Emerson microwave oven
- Europro toaster oven
- Double stainless steel sinks

- Storage drawers and cabinets
- Tundra refrigerator/freezer in the sundeck

45' Chris Craft Dining

Dining space is available at the salon hi/lo table and the galley bar.

45' Chris Craft Master Stateroom

The full beam master stateroom aft offers two queen size berths, storage drawers and cabinets, shelves, hanging lockers, overhead hatch, opening side windows and curtains, reading lights, carpet and ensuite head with tub/shower.

45' Chris Craft Forward Guest Stateroom

The forward guest stateroom offers a v-berth, overhead hatch, 2 portlights with curtains, hanging lockers, storage drawers, reading lights, carpet and direct access to the guest head with enclosed shower.

45' Chris Craft Port Guest Stateroom

The port guest stateroom offers over/under bunks, storage drawers, hanging locker, portlight with curtain, reading lights and carpet. The guest head with enclosed shower is to starboard.

45' Chris Craft Lower Helm

The lower helm is forward on the sundeck and offers a full console forward, opening center windshield and a helmseat on a cabinet.

45' Chris Craft Flybridge

The flybridge is accessed via a stainless steel & teak ladder from the sundeck. It offers a full console forward with storage, a forward benchseat, bimini, non-skid deck, hinged Radar arch, Todd helmseat and tender storage and davit aft.

45' Chris Craft Sundeck

The sundeck offers a hardtop, Stratoglass enclosure aft and opening side windows, teak & glass wing doors, sunshades, transom gate, bound carpet over non-skid, cabinet with Tundra

refrigerator/freezer, wicker deck furniture, storage cabinetry port forward and the salon entrance forward.

45' Chris Craft Audio/Visual Equipment

- DirecTV dish antenna
- Shakespeare Seawatch 2030 TV antenna
- Toshiba flat screen TV in the salon
- Onkyo TX-SV 45 A/V control receiver in the salon
- Monster Cable speaker selector in the salon
- Crown-Vega RE series interior speakers
- Colby flat screen TV in the master stateroom
- Maxima Marine stereo on the flybridge
- RCA speakers in the sundeck

45' Chris Craft Electronics

- Garmin Radar
- Garmin 5212 Mult-Function display at the lower helm
- Garmin 5208 Multi-Function display on the flybridge
- Raytheon Raystar 390 GPS at the lower helm
- Raytheon RayPilot 650 autopilot at the lower helm and on the flybridge
- Raytheon Ray 202 VHF/hailer at the lower helm
- Raytheon Ray 201 VHF on the flybridge
- Raytheon Raychart 600xx electronic charting system at the lower helm
- Raytheon Raydata depth, speed, nav panel on the flybridge
- Ritchie magnetic compass at the lower helm and on the flybridge
- Weems & Plath clock & barometer in the salon

- Phone-Com intercom system

45' Chris Craft Electrical System

- Onan 12 kW generator with approximately 2513 hours
- Xantrex Freedom Marine 2500 watt inverter/charger with remote panel
- 2 X 30 amp shore cords
- 12vdc outlet at lower helm

45' Chris Craft Engine/Mechanical Equipment

- Twin Detroit Diesel 8v71N main engines with approximately 2244 hours
- Morse engine controls
- Racor 1000FG fuel filters with vacuum gauges
- Marine air Systems reverse cycle air conditioning/heating system
- Richmond 19.9 gallon water heater
- 4-bladed propellers

45' Chris Craft Deck Equipment

- Lewmar anchor windlass with foot controls
- Danforth anchor
- Stainless steel anchor roller
- Stainless steel deck hardware
- Stainless steel fender racks forward
- Teak cap rails and lifelines on stainless steel stanchions
- Non-skid decks
- Foredeck sunpad
- Foredeck benchseat and storage

-
- Windshield and window covers
 - Marquipt Tide-Ride gangway
 - Boarding gates each side
 - Teak swimplatform
 - Stainless steel & teak swim ladder

45' Chris Craft Tender

- 13' Novurania RIB tender
- Yamaha 40 hp outboard (2011)
- Tender davit

45' Chris Craft Safety and Fire Protection

- FI quench engine room fire suppression system
- S-Tech carbon monoxide detector
- Fire extinguishers
- Searchlight

45' Chris Craft Exclusions

- Sellers' personal belongings

45' Chris Craft Disclaimer

The Company offers the details of this vessel in good faith but cannot guarantee or warrant the accuracy of this information nor warrant the condition of the vessel. A buyer should instruct his agents, or his surveyors, to investigate such details as the buyer desires validated. This vessel is offered subject to prior sale, price change, or withdrawal without notice

Exclusions

Owner's personal belongings.

Disclaimer

The Company offers the details of this vessel or yacht in good faith but cannot guarantee or warrant the accuracy of this information nor warrant the condition of the vessel. A buyer should instruct his representatives, agents, or his surveyors, to investigate such details as the buyer desires validated. This vessel or yacht is offered subject to prior sale, price change, or withdrawal without notice.

PHOTOS

45' Chris Craft port forward profile photo1



45' Chris Craft Port Forward Profile



45' Chris Craft port aft profile



45' Chris Craft starboard forward profile photo1



45' Chris Craft Starboard Forward Profile



45' Chris Craft Aft Profile



45' Chris Craft Anchor Windlass



45' Chris Craft Foredeck



45' Chris Craft Port Side Deck



45' Chris Craft Foredeck Aft



45' Chris Craft Starboard Side Deck



45' Chris Craft Flybridge Aft



45' Chris Craft Flybridge Forward Seating



45' Chris Craft Flybridge MFD



45' Chris Craft Flybridge Helmseat



45' Chris Craft Sundeck Forward



45' Chris Craft Sundeck



45' Chris Craft Sundeck Port



45' Chris Craft Sundeck Starboard



45' Chris Craft Lower Helm



45' Chris Craft Lower Helm Helmseat



45' Chris Craft Lower Helm MFD



45' Chris Craft Sundeck Fridge



45' Chris Craft Salon Forward



45' Chris Craft Salon Aft



45' Chris Craft Salon Starboard Forward



45' Chris Craft Galley photo1



45' Chris Craft Galley photo2



45' Chris Craft Master Stateroom



45' Chris Craft Master Stateroom Forward



45' Chris Craft Master Stateroom Port



45' Chris Craft Master Stateroom Starboard



45' Chris Craft Master Stateroom Head



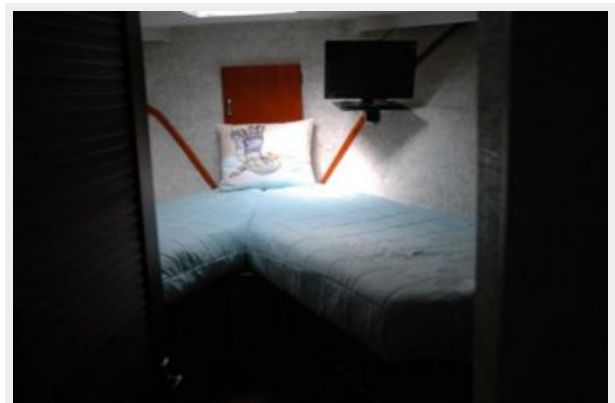
45' Chris Craft Master Stateroom Shower



45' Chris Craft Master Stateroom Tub



45' Chris Craft Forward Stateroom



45' Chris Craft Guest Head

45' Chris Craft Port Guest Stateroom



45' Chris Craft Guest Shower



45' Chris Craft Engine Room Aft



45' Chris Craft Port Main Engine



45' Chris Craft Starboard Main Engine



45' Chris Craft Water Heater



45' Chris Craft Racor Fuel Filters



45' Chris Craft Lower Helm Electrical Panel



45' Chris Craft Salon Electrical Panel



45' Chris Craft Generator photo1



45' Chris Craft Generator photo2



45' Chris Craft Inverter



CONTACTS

Andrey Shestakov, leading yacht broker of the sales department of Shestakov Yacht Sales Inc. Shestakov Yacht Sales Inc., the official representative of the Miami/Fort Lauderdale FL headquarters.

Contact details

Email: andrey@shestakovyachtsales.com

Web: shestakovyachtsales.com/en/

Telephones

USA: +1(954)274-4435

Office hours

Monday – Saturday: **9:00 - 21:00** EDT

Sunday: **closed**

Address



Harbour Towne Marina, 850 NE 3rd St,
STE 213, Dania, FL 33004