

## GRATEFUL — CHRIS CRAFT



**Судостроитель:** CHRIS CRAFT

**Год постройки:** 1978

**Модель:** Моторная яхта

**Цена:** **ЦЕНА ЯХТЫ ПО ЗАПРОСУ**

**Местонахождение:** United States

**Длина общая:** 45' 0" (13.72m)

**Ширина:** 15' 0" (4.57m)

**Мин. осадка:** 4' 2" (1.27m)

**Макс. осадка:** 4' 2" (1.27m)

**Крейс. скорость:** 8 Kts. (9 MPH)

**Макс. скорость:** 16 Kts. (18 MPH)

Купить Grateful — CHRIS CRAFT а также выбрать подходящую вам яхту из нашего каталога яхт вам поможет опытный яхтенный брокер Андрей Шестаков. На сегодняшний день компания Shestakov Yacht Sales Inc. имеет большое количество яхт в собственном списке продаж, а также тесно сотрудничает со всеми крупными яхтенными производителями по всему миру.

Для того чтобы купить яхту Grateful — CHRIS CRAFT а также проконсультироваться по любому вопросу связанному с покупкой, продажей, чартером яхт позвоните по телефону **+7(918)465-66-44**.

# ОГЛАВЛЕНИЕ

---

ОГЛАВЛЕНИЕ	2
ХАРАКТЕРИСТИКИ	6
Обзор	6
Основная информация	6
Размеры	6
Скорость, вместимость и масса	6
Размещение	6
Корпус и палуба	7
Информация о двигателе	7
ПОДРОБНОЕ ОПИСАНИЕ	8
45' Chris Craft Overview	8
45' Chris Craft Vessel Walkthrough	8
45' Chris Craft Accommodations	8
45' Chris Craft Salon	8
45' Chris Craft Galley	8
45' Chris Craft Dining	9
45' Chris Craft Master Stateroom	9
45' Chris Craft Forward Guest Stateroom	9
45' Chris Craft Port Guest Stateroom	9
45' Chris Craft Lower Helm	9
45' Chris Craft Flybridge	9
45' Chris Craft Sundeck	9
45' Chris Craft Audio/Visual Equipment	10
45' Chris Craft Electronics	10
45' Chris Craft Electrical System	11
45' Chris Craft Engine/Mechanical Equipment	11
45' Chris Craft Deck Equipment	11
45' Chris Craft Tender	12

45' Chris Craft Safety and Fire Protection	12
45' Chris Craft Exclusions	12
45' Chris Craft Disclaimer	12
Исключения	12
Отказ от ответственности	13
<b>ФОТОГРАФИИ</b>	<b>14</b>
45' Chris Craft port forward profile photo1	14
45' Chris Craft Port Forward Profile	14
45' Chris Craft port aft profile	14
45' Chris Craft starboard forward profile photo1	14
45' Chris Craft Starboard Forward Profile	14
45' Chris Craft Aft Profile	14
45' Chris Craft Anchor Windlass	15
45' Chris Craft Foredeck	15
45' Chris Craft Port Side Deck	15
45' Chris Craft Foredeck Aft	15
45' Chris Craft Starboard Side Deck	16
45' Chris Craft Flybridge Aft	16
45' Chris Craft Flybridge Forward Seating	16
45' Chris Craft Flybridge MFD	16
45' Chris Craft Flybridge Helmseat	17
45' Chris Craft Sundeck Forward	17
45' Chris Craft Sundeck	17
45' Chris Craft Sundeck Port	17
45' Chris Craft Sundeck Starboard	17
45' Chris Craft Lower Helm	17
45' Chris Craft Lower Helm Helmseat	18
45' Chris Craft Lower Helm MFD	18
45' Chris Craft Sundeck Fridge	18

---

45' Chris Craft Salon Forward	18
45' Chris Craft Salon Aft	19
45' Chris Craft Salon Starboard Forward	19
45' Chris Craft Galley photo1	19
45' Chris Craft Galley photo2	19
45' Chris Craft Master Stateroom	19
45' Chris Craft Master Stateroom Forward	19
45' Chris Craft Master Stateroom Port	20
45' Chris Craft Master Stateroom Starboard	20
45' Chris Craft Master Stateroom Head	20
45' Chris Craft Master Stateroom Shower	20
45' Chris Craft Master Stateroom Tub	20
45' Chris Craft Forward Stateroom	20
45' Chris Craft Guest Head	21
45' Chris Craft Port Guest Stateroom	21
45' Chris Craft Guest Shower	21
45' Chris Craft Engine Room Aft	21
45' Chris Craft Port Main Engine	22
45' Chris Craft Starboard Main Engine	22
45' Chris Craft Water Heater	22
45' Chris Craft Racor Fuel Filters	22
45' Chris Craft Lower Helm Electrical Panel	23
45' Chris Craft Salon Electrical Panel	23
45' Chris Craft Generator photo1	23
45' Chris Craft Generator photo2	23
45' Chris Craft Inverter	23
<b>КОНТАКТЫ</b>	<b>24</b>
Контактная информация	24
Телефоны	24

---

Время работы	24
Адрес	24

# ХАРАКТЕРИСТИКИ

## Обзор

Grateful is a classic 1978 45' Chris Craft Commander offering a 3 stateroom, 2 head layout. She is in good condition and offers some updates, like a newer Radar, chart plotter and inverter. Grateful is a very good liveaboard or Great Loop candidate at an attractive price. Price reduced! Very motivated seller has instructed us to secure any reasonable offer.

## Основная информация

<b>Тип судна:</b> Моторная яхта	<b>Подкатегория:</b> Aft Cabin
<b>Модельный год:</b> 1978	<b>Год постройки:</b> 1978
<b>Страна:</b> United States	<b>Верх:</b> Bimini Top
<b>Открытая палуба мостика:</b> Да	

## Размеры

<b>Длина общая:</b> 45' 0" (13.72m)	<b>Ширина:</b> 15' 0" (4.57m)
<b>Мин. осадка:</b> 4' 2" (1.27m)	<b>Макс. осадка:</b> 4' 2" (1.27m)

## Скорость, вместимость и масса

<b>Крейс. скорость:</b> 8 Kts. (9 MPH)	<b>Макс. скорость:</b> 16 Kts. (18 MPH)
<b>Водоизмещение:</b> 39400 Pounds	<b>Вместимость воды:</b> 200 Gallons
<b>Вместимость сточного бака:</b> 100 Gallons	<b>Объем топливного бака:</b> 500 Gallons

## Размещение

<b>Всего кают:</b> 3	<b>Всего коек:</b> 6
<b>Спальные места:</b> 6	<b>Всего ком. состава:</b> 2

## Корпус и палуба

---

**Материал корпуса:** Fiberglass

**Материал палубы:** Composite Fiberglass

**Цвет корпуса:** White

## Информация о двигателе

---

**Двигатели:** 2

**Производитель:** Detroit Diesel

**Модель:** 8v71N

**Тип двигателя:** Inboard

**Тип топлива:** Diesel

---

# ПОДРОБНОЕ ОПИСАНИЕ

---

## 45' Chris Craft Overview

---

Grateful is a classic 1978 45' Chris Craft Commander offering a 3 stateroom, 2 head layout. She is in good condition and offers some updates, like a newer Radar, chart plotter and inverter. Grateful is a very good liveaboard or Great Loop candidate at an attractive price. She is presently hauled for hurricane season in Florida, but available for inspection.

## 45' Chris Craft Vessel Walkthrough

---

Entering on either side deck, you will walk through a wing door to the sundeck and find a ladder to the flybridge aft, helm forward and salon entrance port forward. Step down into the salon and you will find the galley starboard aft, bar stools and galley bar to starboard, lounge chair starboard forward and L-shaped sofa and table to port. The full beam master stateroom is aft and the two guest staterooms are forward. Engine room access is via salon sole hatches.

## 45' Chris Craft Accommodations

---

The full beam master stateroom aft offers two queen size berths and an ensuite head with enclosed shower. There is a guest stateroom forward that offers a v-berth and direct access to the guest head and then a guest stateroom to port that offers over/under bunks. The guest head to starboard offers an enclosed shower.

## 45' Chris Craft Salon

---

The salon offers an L-shaped sofa with teak hi/lo table to port, lounge chair starboard forward, a bar and stools to starboard, carpet, opening side windows and a Toshiba flat screen TV.

## 45' Chris Craft Galley

---

The galley is located starboard aft in the salon.

- GE side by side refrigerator/freezer
- Princess 3-burner electric cooktop and oven
- Emerson microwave oven
- Europro toaster oven
- Double stainless steel sinks



- Storage drawers and cabinets
- Tundra refrigerator/freezer in the sundeck

---

## 45' Chris Craft Dining

---

Dining space is available at the salon hi/lo table and the galley bar.

---

## 45' Chris Craft Master Stateroom

---

The full beam master stateroom aft offers two queen size berths, storage drawers and cabinets, shelves, hanging lockers, overhead hatch, opening side windows and curtains, reading lights, carpet and ensuite head with tub/shower.

---

## 45' Chris Craft Forward Guest Stateroom

---

The forward guest stateroom offers a v-berth, overhead hatch, 2 portlights with curtains, hanging lockers, storage drawers, reading lights, carpet and direct access to the guest head with enclosed shower.

---

## 45' Chris Craft Port Guest Stateroom

---

The port guest stateroom offers over/under bunks, storage drawers, hanging locker, portlight with curtain, reading lights and carpet. The guest head with enclosed shower is to starboard.

---

## 45' Chris Craft Lower Helm

---

The lower helm is forward on the sundeck and offers a full console forward, opening center windshield and a helmseat on a cabinet.

---

## 45' Chris Craft Flybridge

---

The flybridge is accessed via a stainless steel & teak ladder from the sundeck. It offers a full console forward with storage, a forward benchseat, bimini, non-skid deck, hinged Radar arch, Todd helmseat and tender storage and davit aft.

---

## 45' Chris Craft Sundeck

---

The sundeck offers a hardtop, Stratoglass enclosure aft and opening side windows, teak & glass wing doors, sunshades, transom gate, bound carpet over non-skid, cabinet with Tundra

refrigerator/freezer, wicker deck furniture, storage cabinetry port forward and the salon entrance forward.

## 45' Chris Craft Audio/Visual Equipment

---

- DirecTV dish antenna
- Shakespeare Seawatch 2030 TV antenna
- Toshiba flat screen TV in the salon
- Onkyo TX-SV 45 A/V control receiver in the salon
- Monster Cable speaker selector in the salon
- Crown-Vega RE series interior speakers
- Colby flat screen TV in the master stateroom
- Maxima Marine stereo on the flybridge
- RCA speakers in the sundeck

## 45' Chris Craft Electronics

---

- Garmin Radar
- Garmin 5212 Mult-Function display at the lower helm
- Garmin 5208 Multi-Function display on the flybridge
- Raytheon Raystar 390 GPS at the lower helm
- Raytheon RayPilot 650 autopilot at the lower helm and on the flybridge
- Raytheon Ray 202 VHF/hailer at the lower helm
- Raytheon Ray 201 VHF on the flybridge
- Raytheon Raychart 600xx electronic charting system at the lower helm
- Raytheon Raydata depth, speed, nav panel on the flybridge
- Ritchie magnetic compass at the lower helm and on the flybridge
- Weems & Plath clock & barometer in the salon

- Phone-Com intercom system

---

## **45' Chris Craft Electrical System**

---

- Onan 12 kW generator with approximately 2513 hours
- Xantrex Freedom Marine 2500 watt inverter/charger with remote panel
- 2 X 30 amp shore cords
- 12vdc outlet at lower helm

---

## **45' Chris Craft Engine/Mechanical Equipment**

---

- Twin Detroit Diesel 8v71N main engines with approximately 2244 hours
- Morse engine controls
- Racor 1000FG fuel filters with vacuum gauges
- Marine air Systems reverse cycle air conditioning/heating system
- Richmond 19.9 gallon water heater
- 4-bladed propellers

---

## **45' Chris Craft Deck Equipment**

---

- Lewmar anchor windlass with foot controls
- Danforth anchor
- Stainless steel anchor roller
- Stainless steel deck hardware
- Stainless steel fender racks forward
- Teak cap rails and lifelines on stainless steel stanchions
- Non-skid decks
- Foredeck sunpad
- Foredeck benchseat and storage

- Windshield and window covers
- Marquipt Tide-Ride gangway
- Boarding gates each side
- Teak swimplatform
- Stainless steel & teak swim ladder

---

## 45' Chris Craft Tender

---

- 13' Novurania RIB tender
- Yamaha 40 hp outboard (2011)
- Tender davit

---

## 45' Chris Craft Safety and Fire Protection

---

- FI quench engine room fire suppression system
- S-Tech carbon monoxide detector
- Fire extinguishers
- Searchlight

---

## 45' Chris Craft Exclusions

---

- Sellers' personal belongings

---

## 45' Chris Craft Disclaimer

---

The Company offers the details of this vessel in good faith but cannot guarantee or warrant the accuracy of this information nor warrant the condition of the vessel. A buyer should instruct his agents, or his surveyors, to investigate such details as the buyer desires validated. This vessel is offered subject to prior sale, price change, or withdrawal without notice

---

## Исключения

---

При продаже яхты исключаются личные вещи владельца.

---

## Отказ от ответственности

---

Компания предоставляет описание судна или яхты добросовестно, но не может гарантировать точность этой информации, а также не ручается за техническое состояние. Покупатель должен проинструктировать своих агентов или оценщиков исследовать представленную информацию более подробно, по собственному желанию. Продажа судна или яхты, изменение цены или снятие с продажи будет происходить без предварительного уведомления.

# ФОТОГРАФИИ

**45' Chris Craft port forward profile photo1**



**45' Chris Craft Port Forward Profile**



**45' Chris Craft port aft profile**



**45' Chris Craft starboard forward profile photo1**



**45' Chris Craft Starboard Forward Profile**



**45' Chris Craft Aft Profile**



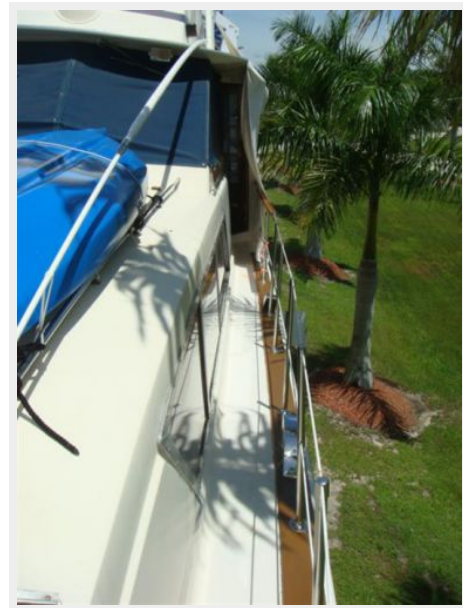
### 45' Chris Craft Anchor Windlass



### 45' Chris Craft Foredeck



### 45' Chris Craft Port Side Deck



### 45' Chris Craft Foredeck Aft



### 45' Chris Craft Starboard Side Deck



### 45' Chris Craft Flybridge Aft



### 45' Chris Craft Flybridge Forward Seating



### 45' Chris Craft Flybridge MFD





**45' Chris Craft Flybridge Helmseat**



**45' Chris Craft Sundeck Forward**



**45' Chris Craft Sundeck**



**45' Chris Craft Sundeck Port**



**45' Chris Craft Sundeck Starboard**



**45' Chris Craft Lower Helm**



### 45' Chris Craft Lower Helm Helmseat



### 45' Chris Craft Lower Helm MFD



### 45' Chris Craft Sundeck Fridge



### 45' Chris Craft Salon Forward



**45' Chris Craft Salon Aft**



**45' Chris Craft Salon Starboard Forward**



**45' Chris Craft Galley photo1**



**45' Chris Craft Galley photo2**



**45' Chris Craft Master Stateroom**



**45' Chris Craft Master Stateroom Forward**



**45' Chris Craft Master Stateroom Port**



**45' Chris Craft Master Stateroom Starboard**



**45' Chris Craft Master Stateroom Head**



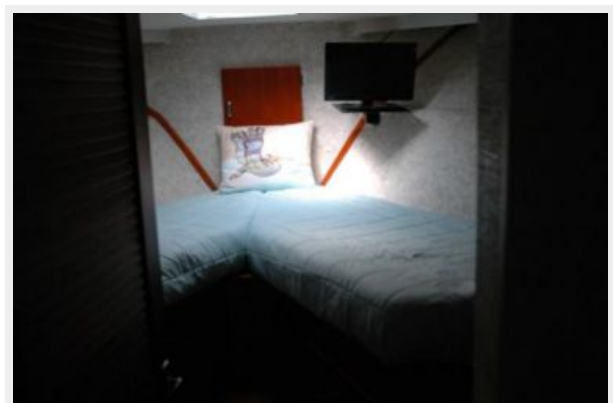
**45' Chris Craft Master Stateroom Shower**



**45' Chris Craft Master Stateroom Tub**



**45' Chris Craft Forward Stateroom**



### 45' Chris Craft Guest Head

### 45' Chris Craft Port Guest Stateroom



### 45' Chris Craft Guest Shower



### 45' Chris Craft Engine Room Aft



**45' Chris Craft Port Main Engine**



**45' Chris Craft Starboard Main Engine**



**45' Chris Craft Racor Fuel Filters**



**45' Chris Craft Water Heater**



45' Chris Craft Lower Helm Electrical Panel



45' Chris Craft Salon Electrical Panel



45' Chris Craft Generator photo1



45' Chris Craft Generator photo2



45' Chris Craft Inverter



# КОНТАКТЫ

---

Андрей Шестаков (Andrey Shestakov) – ведущий яхтенный брокер отдела продаж яхт и судов компании Shestakov Yacht Sales Inc. Официальный представитель Shestakov Yacht Sales Inc. для русскоговорящих клиентов в центральном офисе компании в Майами/Форт Лодердейл/Флорида/США.

## Контактная информация

---

Email: [andrey@shestakovyachtsales.com](mailto:andrey@shestakovyachtsales.com)

Web: [shestakovyachtsales.com](http://shestakovyachtsales.com)

## Телефоны

---

Краснодарский край: **+7(918)465-66-44**

США, Майами, Флорида: **+1(954)274-4435**

## Время работы

---

Понедельник – Суббота: **9:00 - 21:00**  
EDT

Воскресенье: **Закрето**

## Адрес

---



Harbour Towne Marina, 850 NE 3rd St,  
STE 213, Dania, FL 33004