

SEA FAIRY II — CARVER



Builder: CARVER

Year Built: 2006

Model: Motor Yacht

Price: PRICE ON APPLICATION

Location: United States

LOA: 56' 0" (17.07m)

Beam: 15' 4" (4.67m)

Max Draft: 4' 9" (1.45m)

Cruise Speed: 22 Kts. (25 MPH)

Max Speed: 27 Kts. (31 MPH)

Our experienced yacht broker, Andrey Shestakov, will help you choose and buy a yacht that best suits your needs **Sea Fairy II — CARVER** from our catalogue. Presently, at Shestakov Yacht Sales Inc., we have a wide variety of yachts available on our sale's list. We also work in close contact with all the big yacht manufacturers from all over the world.

If you would like to buy a yacht **Sea Fairy II — CARVER** or would like help answering any questions concerning purchasing, selling or chartering a yacht, please call **+1(954)274-4435**

TABLE OF CONTENTS

TABLE OF CONTENTS	2
SPECIFICATIONS	3
Overview	3
Basic Information	3
Dimensions	3
Speed, Capacities and Weight	3
Accommodations	3
Hull and Deck Information	4
Engine Information	4
DETAILED INFORMATION	5
Accommodations	5
Galley	5
Fly Bridge	5
Pilothouse	6
Audio & Visual Equipment	6
Deck Equipment	6
Mechanical	7
Electrical Equipment	7
Safety Equipment	8
Exclusions	8
Disclaimer	8
PHOTOS	9
CONTACTS	19
Contact details	19
Telephones	19
Office hours	19
Address	19

SPECIFICATIONS

Overview

PRICE REDUCED; OUT OF COUNTRY OWNER IS ANXIOUS TO SELL: PRICED ACCORDINGLY. Yacht has new carpeting throughout and new exterior upholstery on the aft deck. The flybridge canvas has new zippers, attachment hardware and U zip panels. LOW ENGINE HOURS and many upgrades and optional equipment.

Basic Information

Category: Motor Yacht	Model Year: 2006
Year Built: 2006	Country: United States
Fly Bridge: Yes	

Dimensions

LOA: 56' 0" (17.07m)	Beam: 15' 4" (4.67m)
Max Draft: 4' 9" (1.45m)	

Speed, Capacities and Weight

Cruise Speed: 22 Kts. (25 MPH)	Max Speed: 27 Kts. (31 MPH)
Displacement: 52500 Pounds	Water Capacity: 200 Gallons
Holding Tank: 100 Gallons	Fuel Capacity: 800 Gallons

Accommodations

Total Cabins: 3	Sleeps: 6
Total Heads: 2	Crew Cabin: 1
Crew Sleeps: 1	

Hull and Deck Information

Hull Material: Fiberglass

Engine Information

Engines: 2

Manufacturer: Volvo

Model: D12 EDC

Engine Type: Inboard

Fuel Type: Diesel

DETAILED INFORMATION

Accommodations

"Sea Fairy II" has a roomy 3 stateroom/2 head layout with attractive cherry interior finish.

The salon is accessed from the aft deck through a large stainless steel and glass sliding door. The Salon has a table with wrap around seating to port and a sofa to starboard. The TV is mounted inside the partition between the upper salon and galley upper lockers and appears at the touch of a button. To port is the galley, which opens to the salon. To starboard is the upper salon. The upper salon has excellent seating and visibility. The helm is forward on centerline. A starboard door from the upper salon accesses the side decks. Also to starboard is a staircase leading to the cabins.

Master is aft with queen bed and en suite bath with shower/tub. The VIP is forward with large centerline bed and direct access to guest head. The second guest cabin comes with upper and lower single berths.

The fly bridge is accessed from the upper salon or from the aft deck. There is plentiful seating at the helm or aft with table. The area is well protected by a hard top and enclosure and best of all, is air conditioned.

There is a substantial aft deck/ cockpit area that has a transom gate to starboard for easy access to the swim platform. There are storage lockers at the transom, a built in seat aft and large table centerline. Access to the fly bridge is on the starboard side of the cockpit. A large deck hatch in the cockpit accesses the lazarette and engine room.

Galley

- Granite countertops
- Ice maker in freezer
- Trash compactor
- 3 burner Princess glass top
- Princess oven
- Tappan microwave
- Subzero refrigerator
- Subzero freezer with ice maker
- 20 gallon water heater
- Malber washer/dryer

Fly Bridge

- 5" Richie compass
- Raymarine ST 6001 autopilot
- (2) Raymarine E80 radar
- Raymarine VHF
- Raymarine E80 fishfinder
- Raymarine depth finder
- Raymarine speed log
- Garmin 3010C in Salon
- Garmin 182C in Master

Pilothouse

- 4" Ritchie compass
- Raymarine ST 6001 autopilot
- (2) Raymarine E120 radar
- Raymarine VHS
- Raymarine E120 fishfinder

Audio & Visual Equipment

- Sole LCD TV & Sony DVD in Salon
- Magnavox LCD TV in upper Salon
- Sole LCD TV & Clarion DVD in Master
- Sole LCD TV & Clarion DVD in Forward
- Sea Tel with USA & Latin receivers
- Bose Home Theater in Salon
- Sony CD-DVD + Clarion 6 CD changer in Salon
- Onkyo AM/FM CD/DVD in Master
- Voyager CCV monitors
- Clarion AM/FM CD on flybridge with remote on Aft Deck

Deck Equipment

Deck:

- Stainless bow pulpit
- 60 lb. Delta anchor with 200 ft. chain
- Maxwell 3500 windlass with remote

Fly bridge:

- Nautical Structures davit with 800 lb capacity on bridge

- Dinghy storage cradle on bridge
- Raft coastal package with 8 person capacity
- Fresh water wash down on bridge
- Bridge hardtop and soft enclosure
- Bridge air conditioning system
- Bridge wet bar with refrigerator & electric grill
- Bridge stereo
- Nova Kool refrigerator

Cockpit:

- Fresh water wash down in the cockpit and in the anchor locker
- Cockpit/bridge carpet package
- Helm & seat covers
- Cockpit to bridge door
- Cockpit table
- Hydraulic lift system (swimming platform) for dinghy storage

Mechanical

- Diesel Engines Volvo D12 EDC 675 hp
- Cruise Air A/C, reverse cycle
- Twin Racor fuel filters
- Four blade Nibral 29" x 31" props (plus 2 spare of same size)
- Stainless steel 2 1/2" diameter shafts
- Stainless steel double ram 42"x12" trim tabs
- (2) Volvo engine monitor panels in flybridge
- (2) Volvo engine monitor panels in wheelhouse
- QL Bow & stern thrusters
- ZF transmissions
- Hydraulic power steering
- Water maker w/ 600 gpd capacity

Electrical Equipment

- Kohler 22 kw generator
- Charles 2600 watt inverter
- Stern dual cabled shore power
- Forward dual shore power connectors
- Underwater lights

Safety Equipment

- (3) hand fire extinguishers
- Fireboy clean agent FE-241 built in fire system
- (3) Bilge pumps w/ alarms
- 8 Man Zodiac life raft
- Carbon monoxide detectors
- Twin air horns
- Jabsco searchlights

Exclusions

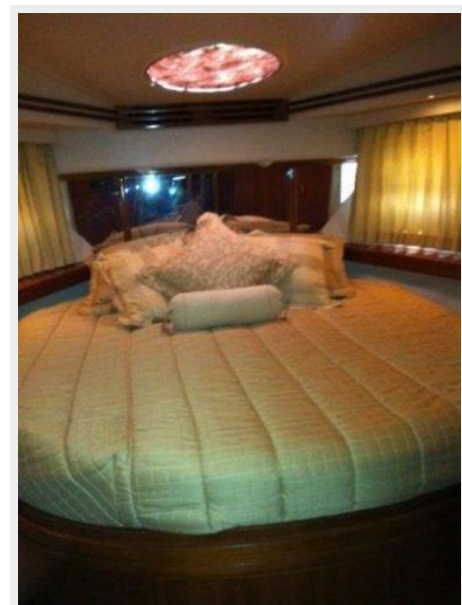
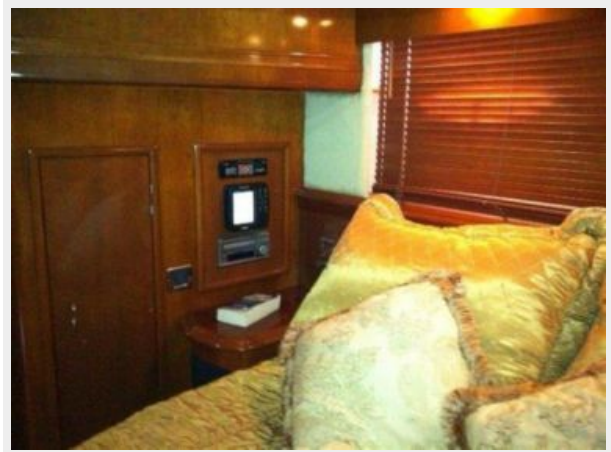
Owner's personal belongings.

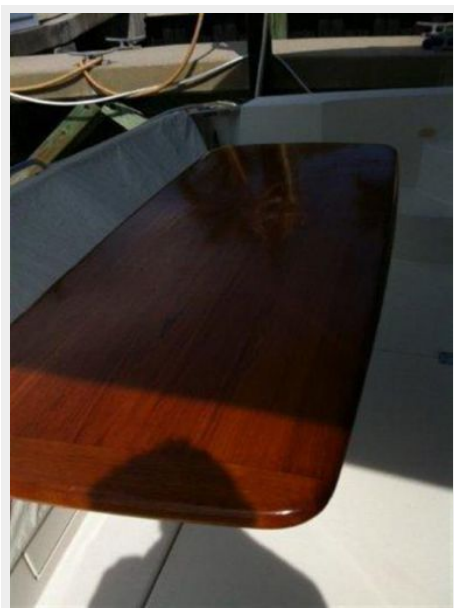
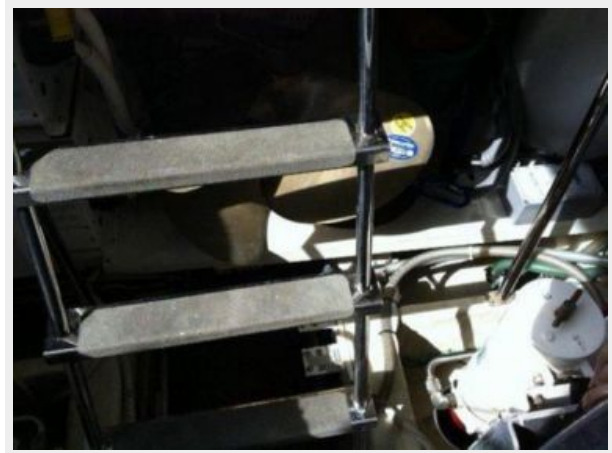
Disclaimer

The Company offers the details of this vessel or yacht in good faith but cannot guarantee or warrant the accuracy of this information nor warrant the condition of the vessel. A buyer should instruct his representatives, agents, or his surveyors, to investigate such details as the buyer desires validated. This vessel or yacht is offered subject to prior sale, price change, or withdrawal without notice.

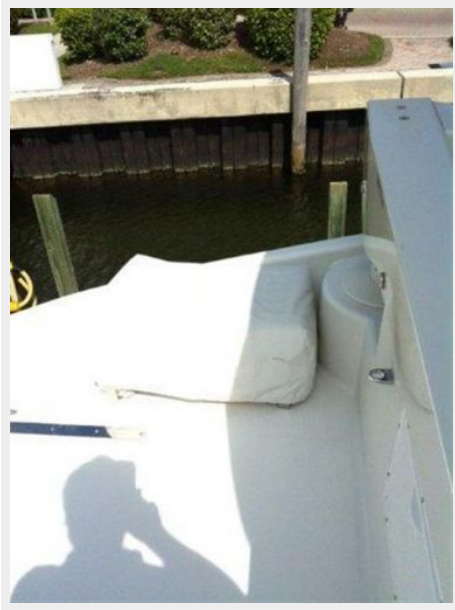
PHOTOS

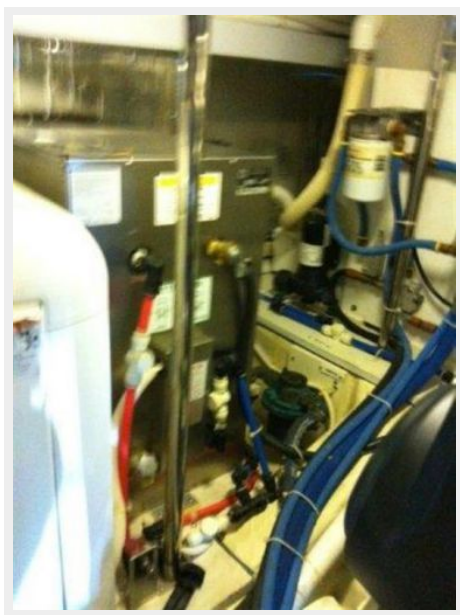


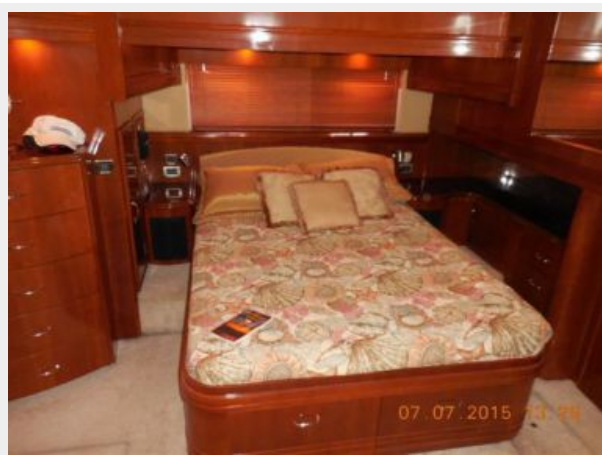


















CONTACTS

Andrey Shestakov, leading yacht broker of the sales department of Shestakov Yacht Sales Inc. Shestakov Yacht Sales Inc., the official representative of the Miami/Fort Lauderdale FL headquarters.

Contact details

Email: **andrey@shestakovyachtsales.com**

Web: shestakovyachtsales.com/en/

Telephones

USA: **+1(954)274-4435**

Office hours

Monday – Saturday: **9:00 - 21:00 EDT**

Sunday: **closed**

Address



Harbour Towne Marina, 850 NE 3rd St,
STE 213, Dania, FL 33004