

52 FLY-NEW BUILD — ASTONDOA



Builder: ASTONDOA

Year Built: 2017

Model: Motor Yacht

Price: PRICE ON APPLICATION

Location: United States

LOA: 52' 11" (16.13m)

Beam: 15' 3" (4.65m)

Max Draft: 2' 8" (0.81m)

Cruise Speed: 25 Kts. (29 MPH)

Max Speed: 30 Kts. (35 MPH)

Our experienced yacht broker, Andrey Shestakov, will help you choose and buy a yacht that best suits your needs 52 FLY-NEW BUILD — ASTONDOA from our catalogue. Presently, at Shestakov Yacht Sales Inc., we have a wide variety of yachts available on our sale's list. We also work in close contact with all the big yacht manufacturers from all over the world.

If you would like to buy a yacht 52 FLY-NEW BUILD — ASTONDOA or would like help answering any questions concerning purchasing, selling or chartering a yacht, please call **+1(954)274-4435**

TABLE OF CONTENTS

TABLE OF CONTENTS	2
SPECIFICATIONS	3
Overview	3
Basic Information	3
Dimensions	4
Speed, Capacities and Weight	4
Accommodations	4
Hull and Deck Information	4
Engine Information	4
PHOTOS	5
CONTACTS	8
Contact details	8
Telephones	8
Office hours	8
Address	8

SPECIFICATIONS

Overview

2017 On this innovative Astondoa 52 Fly , the naturally illuminated galley is perfectly appointed and intelligently arranged. With the master stateroom in the bow, her three staterooms perfectly express Astilleros Astondoa's impeccably high standards. This yacht offers the flexibility of a fourth guest cabin in place of quarters for crew.

Expansive Flybridge

Up on top, the commanding flybridge entertains guests with flexible arrangements: For indulging in the sun, the generous C-shaped seating area around the dinner table converts to a sunpad. Alongside the upper helm, her forward-facing comfortable seats grant a thrilling ride while at sea.

Socially Exhilarating

For delightful excursions into the water, the jet tender garage includes a submersible bathing platform. Ready to get out of the sun? Cool off in the spacious air-conditioned saloon with its relaxed seating arrangements that wrap you in glamour. When you command the helm next to her companionway seating, you will never be left out of the action.

Engineered to Perfection

Powered by the Cummins 715HP, this motoryacht quickly comes up to speed with no loss of visibility and little bow rise. Try turning her under full throttle and see how nicely she banks and tracks like a pro. With her sleek entry and V-form hull, this seaworthy pleasure boat is a joy to command, even in rugged weather.

G Marine is the exclusive dealer for Astondoa USA custom yachts. Tour our outstanding selection of new & used boats in stock and ready to be delivered at G Marine.

Basic Information

Category: Motor Yacht

Sub Category: Flybridge

Model Year: 2017

Year Built: 2017

Country: United States

Vessel Top: Hardtop

Fly Bridge: Yes

Cockpit: Yes

Dimensions

LOA: 52' 11" (16.13m)

Beam: 15' 3" (4.65m)

Max Draft: 2' 8" (0.81m)

Speed, Capacities and Weight

Cruise Speed: 25 Kts. (29 MPH)

Max Speed: 30 Kts. (35 MPH)

Water Capacity: 105 Gallons

Fuel Capacity: 264 Gallons

Accommodations

Total Cabins: 3

Total Berths: 6

Sleeps: 6

Total Heads: 3

Crew Cabin: 1

Crew Berths: 1

Crew Sleeps: 1

Crew Heads: 1

Hull and Deck Information

Hull Material: GRP

Hull Configuration: Deep Vee

Engine Information

Engines: 2

Manufacturer: Cummins

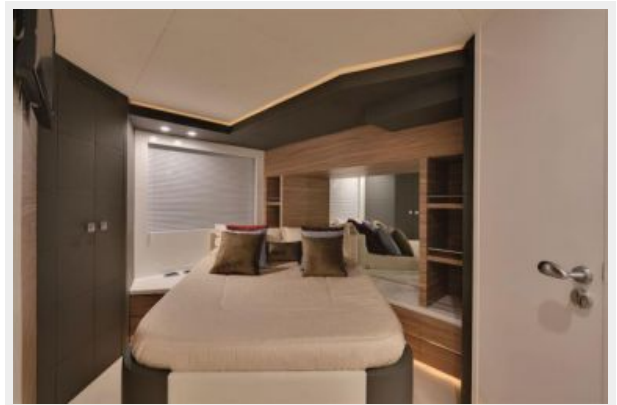
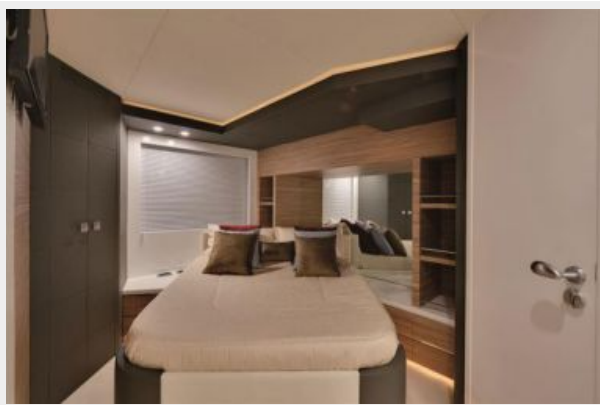
Model: 715 hp Shaft

Engine Type: Inboard

Fuel Type: Diesel

PHOTOS







CONTACTS

Andrey Shestakov, leading yacht broker of the sales department of Shestakov Yacht Sales Inc. Shestakov Yacht Sales Inc., the official representative of the Miami/Fort Lauderdale FL headquarters.

Contact details

Email: andrey@shestakovyachtsales.com

Web: shestakovyachtsales.com/en/

Telephones

USA: +1(954)274-4435

Office hours

Monday – Saturday: **9:00 - 21:00** EDT

Sunday: **closed**

Address



Harbour Towne Marina, 850 NE 3rd St,
STE 213, Dania, FL 33004