

SEA SPUD — B & D BOATWORKS



Builder: B & D BOATWORKS

Year Built: 2006

Model: Sport Yacht

Price: PRICE ON APPLICATION

LOA: 60' (18.29m)

Beam: 18.25

Max Draft: 5' (1.52m)

Our experienced yacht broker, Andrey Shestakov, will help you choose and buy a yacht that best suits your needs **Sea Spud — B & D BOATWORKS** from our catalogue. Presently, at **Shestakov Yacht Sales Inc.**, we have a wide variety of yachts available on our sale's list. We also work in close contact with all the big **yacht manufacturers** from all over the world.

If you would like to buy a yacht **Sea Spud — B & D BOATWORKS** or would like help answering any questions concerning purchasing, selling or chartering a yacht, please call **+1(954)274-4435**

TABLE OF CONTENTS

TABLE OF CONTENTS	2
SPECIFICATIONS	5
Overview	5
Basic Information	5
Dimensions	5
Speed, Capacities and Weight	5
Accommodations	5
Hull and Deck Information	6
Engine Information	6
PHOTOS	7
Salon	7
Salon	7
Master Stateroom	7
Helm	7
Galley	7
Salon	7
Master Stateroom	8
Master Stateroom	8
Master Head	8
Master Stateroom	8
Starboard Stateroom	9
Starboard Stateroom	9
Starboard Head	9
Starboard Head	9
Forward V Berth	10
Forward V Berth	10
Companion Way	10
Tackle room	10

Flybridge	10
Helm	10
Helm	11
Helm	11
Cockpit	11
Flybridge and Seating	11
Engine Room	11
Engine Room	11
Aft Profile	12
Starboard Profile	12
Starboard Aft	12
Aft View (Starboard)	12
Starboard Profile	12
Aft View (Starboard)	12
Starboard Profile	13
Starboard Profile	13
Starboard Profile	13
Starboard Profile	13
Starboard Profile	13
Forward Profile	13
Port Profile	13
Port Profile	14
Port Profile	14
Aft Profile	14
Aft View	14
Aft View	15
CONTACTS	16
Contact details	16
Telephones	16
Office hours	16

Address

16

SPECIFICATIONS

Overview

Owner wants boat sold in Costa Rica!!

Sea Spud Is a proven fish raiser! Since Feb 2014 this team has released 903 Blue Marlin, 8 Black Marlin, 26 Stripe marlin and still counting! She is loaded with recent upgrades since her build in 2006.

Repowered with M94 10V2000 Common rail engines. New covering boards, hull and engine room repainted, Spray rails added and many more! Sea Spud is leaving Central America this fall and owner wants to sell her now! Don't miss the incredible opportunity for a ready to fish custom Carolina boat now!

Basic Information

Category: Sport Yacht

Sub Category: Convertible

Model Year: 2006

Year Built: 2006

Dimensions

LOA: 60' (18.29mm)

Beam: 18.25

Max Draft: 5' (1.52mm)

Speed, Capacities and Weight

Water Capacity: 250 Gallons

Holding Tank: 50 Gal Gallons

Fuel Capacity: 1500 Gal Gallons

Accommodations

Total Cabins: 3

Hull and Deck Information

Hull Material: Composite

Engine Information

Engines: 2

Manufacturer: MTU

Engine Type: Inboard

Fuel Type: Diesel

PHOTOS

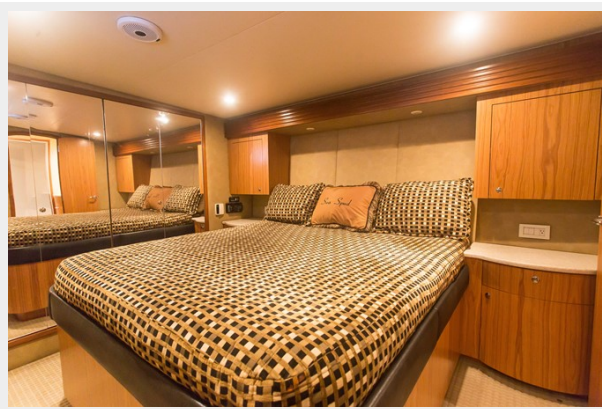
Salon



Salon



Master Stateroom



Helm



Galley



Salon



Master Stateroom

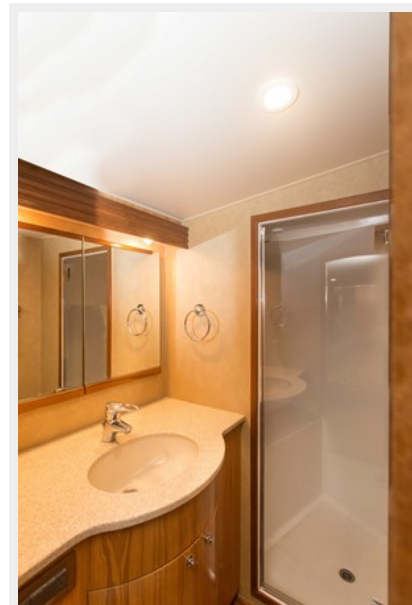


Master Stateroom



Master Head

Master Stateroom



Starboard Stateroom



Starboard Stateroom



Starboard Head



Starboard Head



Forward V Berth



Forward V Berth



Companion Way



Tackle room



Flybridge



Helm



Helm



Helm



Flybridge and Seating



Cockpit



Engine Room



Engine Room



Aft Profile



Starboard Profile



Starboard Aft



Aft View (Starboard)



Aft View (Starboard)



Starboard Profile



Starboard Profile



Starboard Profile



Starboard Profile



Starboard Profile



Forward Profile



Port Profile



Port Profile



Port Profile



Aft Profile



Aft View



Aft View



CONTACTS

Andrey Shestakov, leading yacht broker of the sales department of Shestakov Yacht Sales Inc. Shestakov Yacht Sales Inc., the official representative of the Miami/Fort Lauderdale FL headquarters.

Contact details

Email: **andrey@shestakovyachtsales.com**

Web: shestakovyachtsales.com/en/

Telephones

USA: **+1(954)274-4435**

Office hours

Monday – Saturday: **9:00 - 21:00** EDT

Sunday: **closed**

Address



Harbour Towne Marina, 850 NE 3rd St, STE 213, Dania, FL 33004