

SHADOW FOX — PRINCESS VIKING



Builder: PRINCESS VIKING

Year Built: 2006

Model: Motor Yacht

Price: PRICE ON APPLICATION

Location: United States

LOA: 75' 0" (22.86m)

Beam: 19' 0" (5.79m)

Max Draft: 5' 3" (1.60m)

Our experienced yacht broker, Andrey Shestakov, will help you choose and buy a yacht that best suits your needs **Shadow Fox — PRINCESS VIKING** from our catalogue. Presently, at Shestakov Yacht Sales Inc., we have a wide variety of yachts available on our sale's list. We also work in close contact with all the big yacht manufacturers from all over the world.

If you would like to buy a yacht **Shadow Fox — PRINCESS VIKING** or would like help answering any questions concerning purchasing, selling or chartering a yacht, please call **+1(954)274-4435**

TABLE OF CONTENTS

TABLE OF CONTENTS	2
SPECIFICATIONS	6
Overview	6
Basic Information	6
Dimensions	6
Speed, Capacities and Weight	6
Accommodations	7
Hull and Deck Information	7
Engine Information	7
DETAILED INFORMATION	8
OPTIONAL EQUIPMENT	8
CONSTRUCTION	9
MAIN HELM	9
FLY BRIDGE	10
SALON AND DINETTE	11
GALLEY	12
MASTER STATEROOM	13
MASTER HEAD	13
VIP GUEST STATEROOM/FORWARD	14
VIP GUEST HEAD/FORWARD	15
GUEST STATEROOM/PORT	15
GUEST STATEROOM STARBOARD	16
GUEST HEADS	16
LAUNDRY CENTER	17
CREW CABIN	17
MECHANICAL	17
ELECTRICAL	18
COCKPIT	19

GARAGE	20
MISCELLANEOUS HARDWARE AND DECK EQUIPMENT	20
MISCELLANEOUS INTERIOR	20
MISCELLANEOUS ITEMS OF INTEREST	20
EXCLUSIONS	21
Disclaimer	21
Exclusions	21
Disclaimer	21
PHOTOS	22
Salon	22
Galley	22
Master Stateroom	22
Upper Helm	22
Salon	22
Salon Starboard	22
Salon Port	23
Salon Overview	23
Salon Staircase	23
Salon Dining Table	23
Salon Bar and Fridge	23
Galley	23
Galley	24
Galley Privacy Slide	24
Galley Privacy Slide	24
Formal Dining Table	24
China Storage	24
Service for 8	24
Custom Glass Storage	25
Companionway	25

Master Dressing Area	25
Master Head	25
Master Head	26
VIP Stateroom	26
VIP Stateroom	26
VIP Stateroom	26
VIP Stateroom	26
Guest Stateroom Starboard	26
Guest Stateroom Starboard	27
VIP Head	27
Guest Head	27
Crew	27
Crew Head	28
Crew	28
Crew Laundry	28
Upper Helm	28
Lower Helm	29
Lower Helm Seating	29
Lower Helm	29
Forward Settee	29
Aft Deck Seating	29
Aft Flybridge View	29
Bow Pads	30
Flybridge	30
Flybridge Drink Box	30
Flybridge Grill and Wet Bar	30
Flybridge Seating	30
Flybridge Storage	30
Davit	31

Forward Chain Locker	31
Aft Deck Locker Line	31
Aft Deck Safety Cabinet	31
Forward Washdown Locker	31
Generator	31
Starboard Walk Decks	32
Ground Tackle	32
Port Walk Decks	32
Stern Windlasses	32
Teak Swim Platform	33
Rudder Room	33
Electrical Panel	33
Electrical Panel	33
Washer and Dryer	34
Cablemasters	34
Engine Port	34
Engine Room	34
Engine Room	34
Engine Room	34
Engine Starboard	35
Profile	35
Profile	35
CONTACTS	36
Contact details	36
Telephones	36
Office hours	36
Address	36

SPECIFICATIONS

Overview

This Princess Viking Sport Cruiser 75 Motor Yacht, "SHADOW FOX" is undoubtedly the nicest motor yacht in the 70'-80' market available today. The 4 stateroom/4 head plus crew layout is unrivaled and features a full beam master stateroom. She is a very low hour vessel and in exceptional condition. The original owner has spared no expense and is only selling her to take delivery of a new boat. The full time captain has been with her since day one and the boat lacks nothing. The exterior was painted in 2008 by Viking and the boat is waxed MONTHLY! The interior and exterior condition makes it hard to believe that the boat is a 2006 model. The electronics have been updated with new Garmin touch screens, the exhaust system was just replaced by Metcalf Marine Exhaust in April 2015, and all mechanical services are up to date. Look at everything else and nothing will compare once you step aboard the "SHADOW FOX".

Basic Information

Category: Motor Yacht

Sub Category: Flybridge

Model Year: 2006

Year Built: 2006

Country: United States

Vessel Top: Hardtop

Fly Bridge: Yes

Dimensions

LOA: 75' 0" (22.86m)

Beam: 19' 0" (5.79m)

Max Draft: 5' 3" (1.60m)

Speed, Capacities and Weight

Displacement: 94800 Pounds

Gross Tonnage: 73 Pounds

Water Capacity: 365 Gallons

Holding Tank: 120 Gallons

Fuel Capacity: 1525 Gallons

Accommodations

Total Cabins: 4

Sleeps: 8

Total Heads: 4

Crew Cabin: 1

Crew Berths: 2

Crew Sleeps: 2

Crew Heads: 1

Hull and Deck Information

Hull Material: Fiberglass

Deck Material: Teak

Hull Configuration: Modified Deep Vee

Hull Color: White

Engine Information

Engines: 2

Manufacturer: Caterpillar

Model: C-32

Engine Type: Inboard

Fuel Type: Diesel

DETAILED INFORMATION

OPTIONAL EQUIPMENT

We have taken the time to categorize the equipment that was part of the standard build from when she was new and the follow items were optional upgrades:

Leather upgrade in the salon

Glendinning Cablemasters (2)

Aft deck docking station

Passerelle

Side boarding gates

Custom fabrics

Buell air horns

Bose interior Home Theater System

Custom interior seating

Upgrade master TV

AM/FM stereo/CD/DVD players in ALL the staterooms including the crew

Flat panel TV's in ALL the staterooms including the crew

Engine room workbench

Remote the oil changer discharge hose to the back deck

Custom aft deck teak table

Pipewelders Custom HARDTOP AND EZ2CY fly bridge enclosure

36,000BTU Fly bridge air conditioning

Satellite TV/phone

1200GPD Water maker

NEW Garmin touch screen electronics at the helm and fly bridge (Chart plotter/Radar)

(3) NEW Ocean LED blue under water lights

CONSTRUCTION

Bulwarks

Deep V hull with molded spray rails

Engine beds integrally molded with hull

Hand-laid fiberglass construction

Heavy duty PVC rub rails w/316SS insert

Integrally bonded stringer system

Molded non-skid surfaces on coach roof

Teak cockpit, bathing platform, stairs, side decks, and foredeck

MAIN HELM

316 Stainless steel framed windshield w/tempered glass

AC/DC control panel

Alarms, audible and visual

Anchor windlass remote control

Garmin touch screen Chart plotter/Radar (NEW 2014)

Simrad AP25 Autopilot

Caterpillar engine displays

Caterpillar electronic engine controls

Side Power Bow thruster control

Burl trim instrument panel

Plastimo Compass

Furuno RD30 multi-function display

Door to starboard side deck

Engine controls, electronic w/synchronizers

Full engine instrumentation

Helm seat, adjustable and companion seat

Loudhailer and intercom to fly bridge

Rudder angle indicator

ACR Searchlight control

Speed log

Trim tab controls with indicators

Icom M602 VHF radio

Windshield cover

Windshield defogger

Windshield wipers (3), variable speed w/washers

Water maker control pad

FLY BRIDGE

Access from salon and cockpit

Alarms, audible/visual

Anchor windlass remote control

Garmin touch screen Chart plotter/Radar (NEW 2014)

Standard Horizon Matrix VHF radio with AIS

Simrad AP26 Autopilot

Side Power Bow thruster control

Plastimo Compass

Console and seat covers

Marquipt Davit (925# capacity), can be extended to service the bathing platform

Furuno RD30 multi-function display

Engine controls, electronic w/synchronizers

Engine instrumentation

Engine room fire warning system

Fuel gauges

Helm and companion seat, adjustable

Hydraulically raised instrument console

Radar arch integrated into the custom Pipewelder's hardtop

Rudder angle indicator

ACR Searchlight control

Refrigerated drink box located in the settee

Speed log

Stereo speakers

Tilt steering wheel

Trim tab controls with indicators

U-shaped settee w/table

Wet bar with sink and grill

Windshield, low profile

SALON AND DINETTE

HIGH GLOSS CLASSIC CHERRY WOOD INTERIOR THROUGHOUT

110v Receptacles, GFCI protected

316 Stainless Steel framed cockpit door

Aft electric window

AM/FM stereo/CD

Cocktail cabinet with refrigerator, bottle, and glass storage

Dining table with (8) chairs

Overhead and indirect lighting

Spiral staircase to fly bridge with decorative leather wrapped handrail

Tinted side and aft windows

Trash compactor

TVTVTVDVDVCR

U-shaped settee, genuine leather w/coffee table

(2) Upholstered barrel chairs

GALLEY

Butler shelf

Dishwasher

Door to port side deck

Duplex 110V GFI receptacles

Drawers and storage cabinets

Neff 4 Burner Electric range

Exhaust fans

Granite counter top

Panasonic Microwave/Convection oven

Overhead and countertop lighting

Raise and lower privacy bulkhead to salon, electro-hydraulic

Sub Zero full height Refrigerator

Sub Zero freezer drawers with ice maker

Franke Stainless steel dual bowl sink

Teak sole

Broan Trash compactor

MASTER STATEROOM

Carpeting

Custom draperies

110v Receptacles, GFI protected

JVC AM/FM stereo/CD/DVD

Chest of drawers

Dressing table and stool

En suite head

Fire extinguisher (handheld) and smoke detector

Large double bed with drawers below

(6) Large vertical port light

(2) Night stands

(2) Opening port lights

Overhead and reading lights

Overhead lockers outboard

Settee

Upgraded Flat panel TV

Walk-in closet with drawer storage and full length mirror

Custom lighting for vanity mirror

Ship's safe in master closet

MASTER HEAD

Avonite decorative vanity top

Duplex 110V GFI protected

Exhaust fan

Laundry hamper/Avonite lid

Mirrors

Opening portlight

Overhead lighting

Sink

Storage lockers

Teak sole

Tub with shower

Vacuflush head system

Bidet

VIP GUEST STATEROOM/FORWARD

JVC AM/FM stereo/DVD/CD

Sharp Aquos flat panel TV

Carpeting

110v Receptacles, GFI protected

Deck hatch w/screen and blind

En suite head

Fire extinguisher (handheld) and smoke detector

Hanging locker with shelves

Large double bed with drawers below

Mirror

Opening port lights

Overhead reading and indirect lights

Overhead lockers outboard

VIP GUEST HEAD/FORWARD

Avonite decorative vanity top

Duplex 110V GFI protected

Exhaust fan

Mirrors

Opening portlight

Overhead lighting

Sink

Stall shower

Storage lockers

Teak sole

Vacuflush head system

GUEST STATEROOM/PORT

JVC AM/FM stereo/DVD/CD

Sharp Aquos flat panel TV

Carpeting

110v Receptacles, GFI protected

En suite head

Fire extinguisher (handheld) and smoke detector

Hanging locker with shelves

Night stand w/storage

Opening port lights

Overhead and reading lights

Queen size double berth with underneath storage in lieu of the side by side singles

GUEST STATEROOM STARBOARD

JVC AM/FM stereo/DVD/CD

Sharp Aquos flat panel TV

Carpeting

110v Receptacles, GFI protected

En suite head

Fire extinguisher (handheld) and smoke detector

Hanging locker with shelves

Night stand w/storage

Opening port lights

Overhead and reading lights

Two full size upper and lower single berths in L-shaped configuration

GUEST HEADS

Avonite decorative vanity top

Duplex 110V GFI protected

Exhaust fan

Mirrors

Opening portlight

Overhead lighting

Sink

Stall shower

Starboard head also serves as the day head

Storage lockers

Teak sole

Vacuflush head system

LAUNDRY CENTER

Located off lower accommodation companionway

Bosch Independent stacked clothes washer and dryer

Storage

CREW CABIN

Access via spiral staircase from starboard side deck and watertight door in transom

Crew head w/Vacuflush head, exhaust fan, stall shower, and sink

Fire extinguisher (handheld) and smoke detector

Hanging and storage lockers

Opening portlights

Overhead and reading lights

(2) Full size single berths

Washer/Dryer

MECHANICAL

Advanced acoustical insulation

Air conditioning, zoned w/reverse cycle heat (101,000 BTU)

Bilge pumps, electric w/float and manual switch

Bow thruster w/dual station controls

Contaminated fuel warning system

Dripless shaft logs

Engine room blowers

Exhaust silencer for main engines and generator

Fire protection system, automatic and manual

Fuel filters, high capacity duplex w/water trap and change over valve

Fuel tanks port and starboard in N4 marine grade alloy

High volume air intakes w/moisture eliminators

Holding tank, 120 gallons w/dockside overboard pump out and gauge

Holding tank, backup overboard discharge

Oil change system for engines, gears, and generator with remote spigot on aft deck

Power assisted hydraulic steering system

5 bladed propellers

Remote fuel shut-offs

Rudders, high speed

Water-flow failure light and alarm at fly bridge and main helm

Water pump on demand

Water tank with gauge

ELECTRICAL

(2) 50 AMP/240V dockside services on power reel

110V receptacles, GFCI protected

Anchor windlass

Batteries, heavy duty maintenance free

(2) Battery chargers, 155 amps total

Bonding system

(2) Central vacuum systems

Circuit breakers on all circuits

Onan Generator, 27.5kw/60Hz w/sound shield with 1198 hours

Generator gauge package

Buell air horns in place of the standard electric horns

Intercom system

(2) Isolation transformers

Navigation/running lights

Neutral safety switch for engine controls

Polarity check system

Remote battery master switches

Searchlight, twin beam

Shore cable inlets, TV and phone

TV antennae

COCKPIT

Access to side decks

Bathing platform, extended with swim ladder

(3) Sided mesh cockpit screen system

Cockpit speakers

(2) Cockpit docking windlasses

Dockside water inlet w/pressure reducing valve

Emergency service locker w/fuel shutoffs, manual bilge pump, and fire system remotes

Engine room, crew cabin, and utility room access from watertight side deck and cockpit door

Integrated fly bridge staircase

Fender storage

Overhead and courtesy lighting

Self draining deck

Transom shower (H/C)

Stereo speakers

Stern docking lights

Side boarding gates

Storage lockers

(2) Transom doors

Transom storage area w/vertical electro-hydraulic door

Upholstered seating

GARAGE

General storage in the transom with interior lighting

MISCELLANEOUS HARDWARE AND DECK EQUIPMENT

316 Stainless steel bow chocks

316 Stainless steel bow, stern, and spring cleats

316 Stainless steel rails

Custom made stainless steel anchor

Fenders

Lines

Flagstaff

Foredeck freshwater wash down

Portlight screens

Side boarding ladder

MISCELLANEOUS INTERIOR

China, flatware, and stemware service for (8)

Complete set of bed linens

MISCELLANEOUS ITEMS OF INTEREST

4/2015: LAST ENGINE SERVICE

-
- 3/2014: BOTTOM PAINT (3 coats of Sea Hawk Bio-Cop/Prop Speed)**
- 3/2015 EXHAUST SYSTEM REPLACED (Metcalf Marine)**

Tender is negotiable but not included as part of the sale

EXCLUSIONS

OWNERS PERSONAL ITEMS OR ANY OTHER ITEM NOT LISTED HEREIN AT TIME OF VIEWING.

Disclaimer

The Company offers the details of this vessel in good faith but cannot guarantee or warrant the accuracy of this information nor warrant the condition of the vessel. A buyer should instruct his agents, or his surveyors, to investigate such details as the buyer desires validated. This vessel is offered subject to prior sale, price change, or withdrawal without notice.

Exclusions

Owner's personal belongings.

Disclaimer

The Company offers the details of this vessel or yacht in good faith but cannot guarantee or warrant the accuracy of this information nor warrant the condition of the vessel. A buyer should instruct his representatives, agents, or his surveyors, to investigate such details as the buyer desires validated. This vessel or yacht is offered subject to prior sale, price change, or withdrawal without notice.

PHOTOS

Salon



Galley



Master Stateroom



Upper Helm



Salon



Salon Starboard



Salon Port



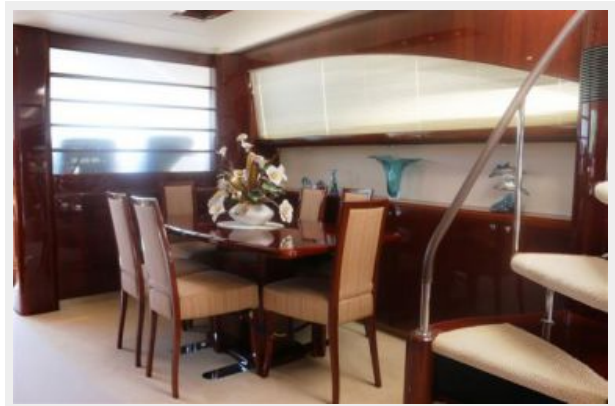
Salon Overview



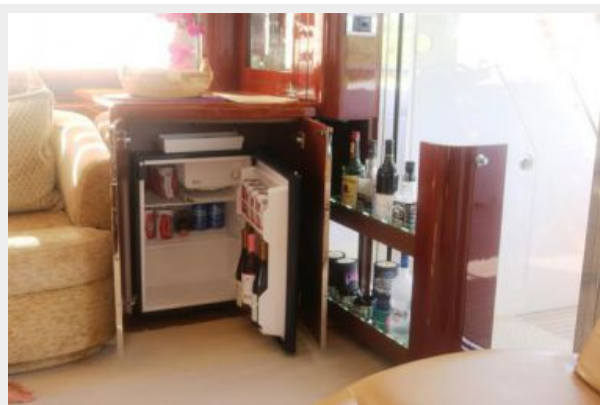
Salon Staircase



Salon Dining Table



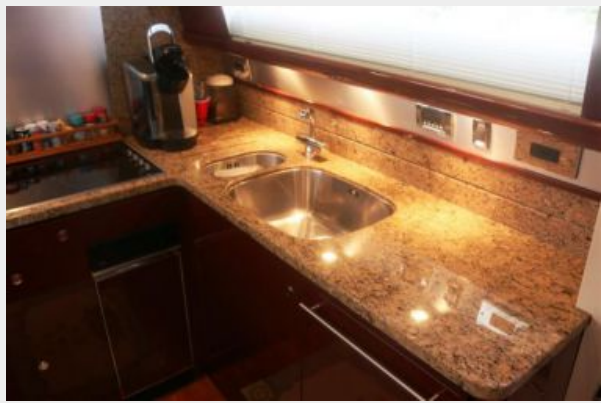
Salon Bar and Fridge



Galley



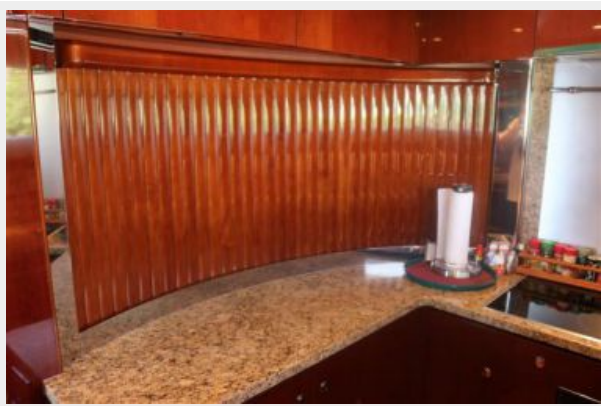
Galley



Galley Privacy Slide



Galley Privacy Slide



Formal Dining Table



China Storage



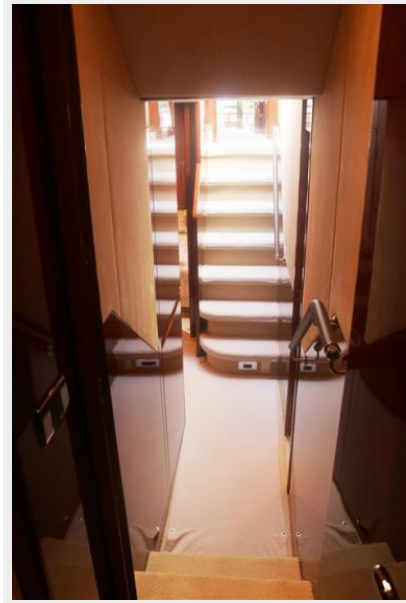
Service for 8



Custom Glass Storage



Companionway



Master Dressing Area



Master Head



Master Head



VIP Stateroom



VIP Stateroom



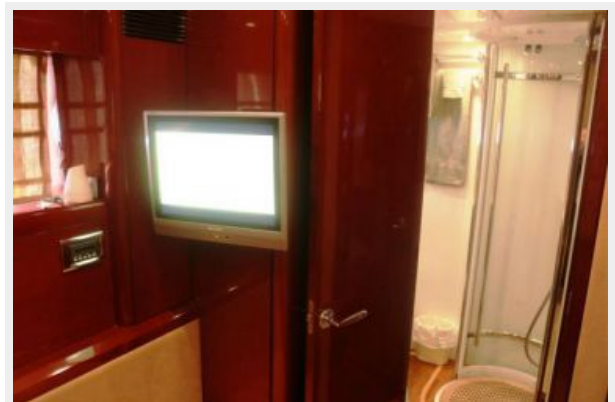
VIP Stateroom



VIP Stateroom



Guest Stateroom Starboard



Guest Stateroom Starboard



VIP Head



Guest Head



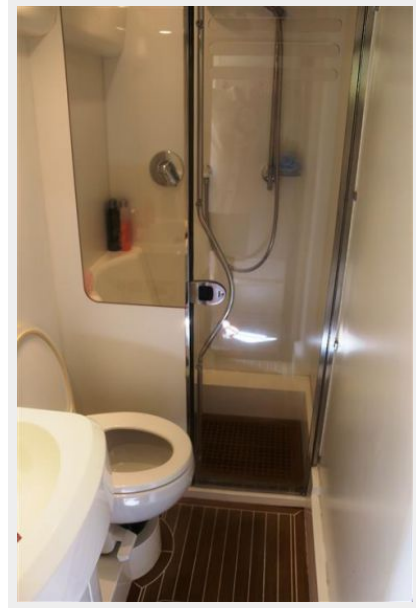
Crew



Crew



Crew Head



Crew Laundry



Upper Helm



Lower Helm



Lower Helm Seating



Lower Helm



Forward Settee



Aft Deck Seating



Aft Flybridge View



Bow Pads



Flybridge



Flybridge Drink Box



Flybridge Grill and Wet Bar



Flybridge Seating



Flybridge Storage



Davit



Forward Chain Locker



Aft Deck Locker Line



Aft Deck Safety Cabinet



Forward Washdown Locker



Generator



Ground Tackle



Starboard Walk Decks



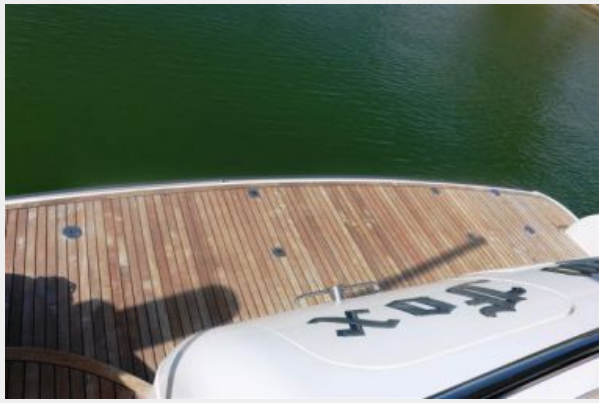
Port Walk Decks



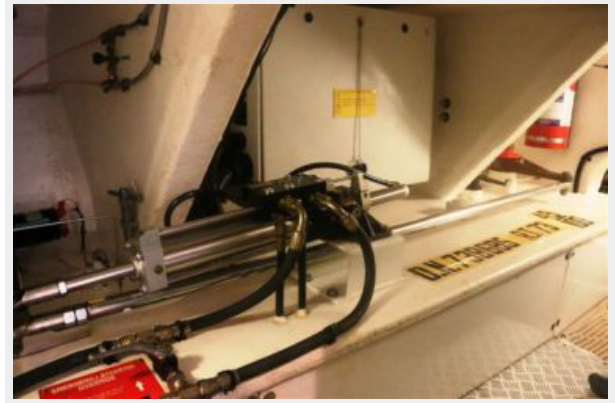
Stern Windlasses



Teak Swim Platform



Rudder Room



Electrical Panel



Electrical Panel



Washer and Dryer



Cablemasters



Engine Port



Engine Room



Engine Room



Engine Room



Engine Starboard



Profile



Profile



CONTACTS

Andrey Shestakov, leading yacht broker of the sales department of Shestakov Yacht Sales Inc. Shestakov Yacht Sales Inc., the official representative of the Miami/Fort Lauderdale FL headquarters.

Contact details

Email: andrey@shestakovyachtsales.com

Web: shestakovyachtsales.com/en/

Telephones

USA: +1(954)274-4435

Office hours

Monday – Saturday: **9:00 - 21:00** EDT

Sunday: **closed**

Address



Harbour Towne Marina, 850 NE 3rd St,
STE 213, Dania, FL 33004