

LUCKY PENNY — PHOENIX



Builder: PHOENIX

Year Built: 1984

Model: Cruiser

Price: PRICE ON APPLICATION

Location: United States

LOA: 29' 0" (8.84m)

Beam: 10' 0" (3.05m)

Max Draft: 2' 6" (0.76m)

Our experienced yacht broker, Andrey Shestakov, will help you choose and buy a yacht that best suits your needs **Lucky Penny — PHOENIX** from our catalogue. Presently, at Shestakov Yacht Sales Inc., we have a wide variety of yachts available on our sale's list. We also work in close contact with all the big yacht manufacturers from all over the world.

If you would like to buy a yacht **Lucky Penny — PHOENIX** or would like help answering any questions concerning purchasing, selling or chartering a yacht, please call **+1(954)274-4435**

TABLE OF CONTENTS

TABLE OF CONTENTS	2
SPECIFICATIONS	3
Overview	3
Basic Information	4
Dimensions	4
Speed, Capacities and Weight	4
Accommodations	4
Hull and Deck Information	5
Engine Information	5
PHOTOS	6
CONTACTS	12
Contact details	12
Telephones	12
Office hours	12
Address	12

SPECIFICATIONS

Overview

If your searching for **A good dependable fishing vessel** please don't overlook this great **Phoenix 29 Flybridge**. **Under 20k**, rugged twin engine set up to fish offshore and stay there for an extended trip. This Phoenix 29 Flybridge is **equipped with outriggers, Galley and Head**. There is plenty of room to move about on her **uncluttered decks**. This is a straight and honest **"no gimmick's"** fishing vessel. Take a look at **"Lucky Penny"** and you may have just found what you've been looking for elsewhere. **"Lucky Penny"** is lift kept with a **clean bottom** and is ready to go fishing.

"Lucky Penny" comes with two spare props.

Dimensions LOA: 29 ft 0 in Beam: 10 ft 0 in Maximum Draft: 2 ft 6 in Bridge Clearance: 10 ft 0 in Dry Weight: 13000 lbs **Engines** Engine 1: Engine Brand: Chrysler Year Built: 1984 Engine Model: Electronic 5.2 liter Engine Type: Inboard Engine/Fuel Type: Gas/Petrol Location: Starboard Engine Hours: 617 Propeller: 3 blade propeller Drive Type: Direct Drive Engine Power: 235 HP Engine 2: Engine Brand: Chrysler Year Built: 1984 Engine Model: Electronic 5.2 liter Engine Type: Inboard Engine/Fuel Type: Gas/Petrol Engine Hours: 859 Propeller: 3 blade propeller Drive Type: Direct Drive Engine Power: 235 HP **Tanks** Fresh Water Tanks: 1 Aluminum (40 Gallons) Fuel Tanks: 2 Aluminum (70 Gallons) Holding Tanks: 1 (6 Gallons) **Accommodations** Number of double berths: 2 Number of cabins: 1 Number of heads: 1 **Electronics** Log-speedometer VHF - Uniden Solara w/Distress Plotter - Garmin GPS Map 740s Compass - Ritchie Angler Depthsounder **Inside Equipment** Electric bilge pump - Rule Marine head - Manfield Tank In Battery charger Refrigerator **Electrical Equipment** Electrical Circuit: 12V **Outside Equipment/Extras** Swimming ladder

Phoenix 29 Flybridge

Walk Around

Viewing this Phoenix 29 Flybridge in her lift afforded a good look at the bottom, which was very clean with good bottom paint. "Lucky Penny" is a purpose built "go fishing" vessel. Stepping aboard one first notices the large aft fishing cockpit. This area is very large with plenty of room to move where one needs to be while wrestling a fish. The inside of the gunwale has knee bolsters with a stainless steel rail atop the gunwale sporting fishing rod holders all around.

Stainless steel railing starts just forward of the cockpit and on to the bow. There is a grab rail atop the cabin for a secure hold on the way up. On the bow is a well secured Danforth anchor with 5' of rubber coated chain and nylon rode. There is no windlass, however there are two strong stainless cleets and two stainless open chocks. On up to the Flybridge which is accessed via ladder from the Fishing Deck is located a bench type wide helm chair facing the console. Here are the engine instruments for both engines, Switch Panel, compass, depth and Chart Plotter. This area is cover by a bimini and is equipped with a radar arch. Down below, the cabin is equipped with everything needed for a week-end fishing trip including galley stove,

refrigerator/freezer and sink with on-demand pressurized water. Across the way to port is a Mansfield Marine toilet with built in holding, macerator pump and a stainless sink with shower attachment. There is a nice Dinette that can easily seat four to port with a settee to starboard which folds out to make two bunks. On forward in the bow is a very large berth for two.

Notes and exclusions

- * Radar unit is not included in the sale.
- * Starboard engine hour meter quit working at one point. Port is true. * "Lucky Penny" comes with two spare props!

Basic Information

Category: Cruiser

Model Year: 1984

Year Built: 1984

Country: United States

Fly Bridge: Yes

Dimensions

LOA: 29' 0" (8.84m)

Beam: 10' 0" (3.05m)

Max Draft: 2' 6" (0.76m)

Clearance: 10' 0" (3.05m)

Speed, Capacities and Weight

Displacement: 13000 Pounds

Water Capacity: 40 Gallons

Holding Tank: 6 Gallons

Fuel Capacity: 70 Gallons

Accommodations

Total Cabins: 1

Total Berths: 2

Total Heads: 1

Hull and Deck Information

Hull Material: Fiberglass

Hull Finish: Aluminum

Engine Information

Engines: 2

Manufacturer: Chrysler

Model: Electronic 5.2 liter

Engine Type: Inboard

Fuel Type: Gas/Petrol

PHOTOS

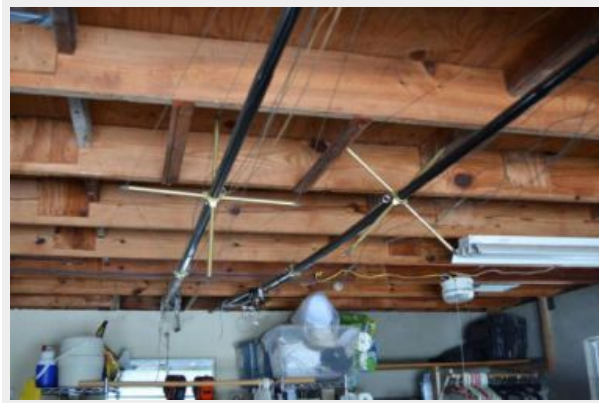












CONTACTS

Andrey Shestakov, leading yacht broker of the sales department of Shestakov Yacht Sales Inc. Shestakov Yacht Sales Inc., the official representative of the Miami/Fort Lauderdale FL headquarters.

Contact details

Email: andrey@shestakovyachtsales.com

Web: shestakovyachtsales.com/en/

Telephones

USA: +1(954)274-4435

Office hours

Monday – Saturday: **9:00 - 21:00** EDT

Sunday: **closed**

Address



Harbour Towne Marina, 850 NE 3rd St,
STE 213, Dania, FL 33004