

PITCH & ROLL — VIKING



Судостроитель: VIKING

Год постройки: 2008

Модель: Катер для спортивной рыбалки

Цена: ЦЕНА ЯХТЫ ПО ЗАПРОСУ

Местонахождение: United States

Длина общая: 54' 8" (16.66m)

Ширина: 17' 9" (5.41m)

Макс. осадка: 5' 2" (1.57m)

Купить Pitch & Roll — VIKING а также выбрать подходящую вам яхту из нашего каталога яхт вам поможет опытный яхтенный брокер Андрей Шестаков. На сегодняшний день компания Shestakov Yacht Sales Inc. имеет большое количество яхт в собственном списке продаж, а также тесно сотрудничает со всеми крупными яхтенными производителями по всему миру.

Для того чтобы купить яхту Pitch & Roll — VIKING а также проконсультироваться по любому вопросу связанному с покупкой, продажей, чартером яхт позвоните по телефону **+7(918)465-66-44**.

ОГЛАВЛЕНИЕ

ОГЛАВЛЕНИЕ	2
ХАРАКТЕРИСТИКИ	3
Основная информация	3
Размеры	3
Скорость, вместимость и масса	3
Размещение	3
Корпус и палуба	3
Информация о двигателе	4
ПОДРОБНОЕ ОПИСАНИЕ	5
OVERVIEW	5
Исключения	13
Отказ от ответственности	13
ФОТОГРАФИИ	14
КОНТАКТЫ	23
Контактная информация	23
Телефоны	23
Время работы	23
Адрес	23

ХАРАКТЕРИСТИКИ

Основная информация

Тип судна: Катер для спортивной рыбалки

Подкатегория: Convertible

Модельный год: 2009

Год постройки: 2008

Страна: United States

Открытая палуба мостика: Да

Кубрик: Да

Размеры

Длина общая: 54' 8" (16.66m)

Ширина: 17' 9" (5.41m)

Макс. осадка: 5' 2" (1.57m)

Скорость, вместимость и масса

Водоизмещение: 77900 Pounds

Вместимость воды: 225 Gallons

Вместимость сточного бака: 100 Gallons **Объем топливного бака:** 1445 Gallons

Размещение

Всего кают: 3

Всего ком. состава: 2

Корпус и палуба

Материал корпуса: Fiberglass

Комплектация корпуса: Modified V-Hull

Цвет корпуса: Snow White

Дизайнер корпуса: Viking

Информация о двигателе

Двигатели: 2

Производитель: MAN

Модель: V12 CRM

Тип двигателя: Inboard

Тип топлива: Diesel

ПОДРОБНОЕ ОПИСАНИЕ

OVERVIEW

The 54 Viking embodies all that has made the Viking name legendary. Incredible performance, excellent range, exquisite style and unparalleled comfort for your guests are all encompassed in this fine yacht. "Pitch & Roll" is a stunning example of this fine model and reflects her owner's sophisticated sense of taste coupled with all the comforts and amenities you would expect on a yacht of this caliber. She has the preferred queen forward three-stateroom layout.

From 2009 to 2013 "Pitch & Roll" was a fresh water boat, hauled and stored for six months in a heated facility never winterized. This comprehensively equipped vessel is new in the market and ready to go. Don't miss this opportunity. Call for your appointment today!

SALON

- Air conditioning with reverse cycle heat with temperature control
- Raised electric panel up
- Viking home theater Bose system
- Carpet runner
- Kenmore clear icemaker behind teak door
- Channel plus system to run salon VCR/DVD throughout boat
- Quartz light dimmers
- Dimmers on overhead low-voltage AC lights
- Dinette dimmers on overhead halogen lights
- Access door behind TV
- 42" plasma TV in salon
- Custom teak dinette table w/wood insert
- Cocktail table, teak, high gloss finish
- L-shape sofa, ultra-leather with storage underneath both arms and seats

- Sliding salon door, molded fiberglass door with window and teak interior finish
- Wrapped hatch carpet installation
- Luxury edition décor package

GALLEY/DINETTE

- Amtico teak and holly in galley
- Subzero, large capacity, deep drawer under counter refrigerator and freezer with varnished teak face drawers
- Icemaker in freezer
- Custom galley granite
- Gaggenau oven
- 3 burner stove top
- Garbage disposal in sink
- Storage cabinets in upper galley, varnished teak doors
- Dinette couch with removable cushions and storage
- Dinette table, teak, high gloss finish with single pedestal
- Electrical sub panel for galley appliances

COMPANIONWAY

- Dimmers on overhead low-voltage AC lights
- Carpeting, carpeted steps from Galley through companionway
- Central vacuum unit connection with accessories
- Open companionway to laundry center with stackable front loading washer & dryer behind teak door

MASTER STATEROOM

- Upgraded queen size mattress with lift-up bunk top for storage

- Drawer storage under bed, 2 large drawers
- Hanging locker, teak finished maple interiors
- Air conditioning with reverse cycle heat with temperature control

MASTER STATEROOM HEAD

- One piece custom frameless shower door
- Nickel faucet
- Nickel shower fixtures
- Mirror in place of wallpaper around upper vanity insert
- Amtico Teak and Holly flooring
- Corian vanity countertop with bone sink
- Solid nickel towel bars and rings
- Electric head Sealand 4800 series
- Shower light
- Stall shower, fiberglass

FORWARD STATEROOM

- Queen size Island walk around bed with Orthopedic foam mattress
- Lift up top with gas pistons and storage underneath
- Stereo speakers recessed in headliner tied into salon stereo with volume control
- 15" flat screen TV
- Air conditioning with reverse cycle heat with temperature control
- Carpeting
- Hanging locker teak, maple lined and spacious

FORWARD STATEROOM HEAD

- Corian vanity countertop with bone sink
- Nickel faucet
- Nickel shower fixtures
- Mirror in place of wallpaper around upper vanity
- Wallpaper border in head
- Amtico Teak & Holly flooring
- Solid nickel towel bars and rings
- Electric head Sealand 4800 series
- Exhaust fan with direct vent
- Shower light
- Stall shower, fiberglass

STARBOARD STATEROOM

- Crossover layout, with lift up lower bunk top
- Air conditioning with reverse cycle heat with temperature control
- Hanging locker, maple lined
- Carpeting
- Private access to head
- Storage drawer located under hanging locker
- Stereo speakers recessed in headliner tied into salon stereo with volume control

ELECTRONICS

- (3) KEP 15" LCD sunlight readable marine monitor
- Furuno Navnet 3D black box MFD processor
- Furuno Navnet 3D GPS/WAAS receiver
- Furuno Navnet 3D Digital UHD 12kW Radar with 6' open array
- Furuno Navnet 3D 12.1" MFD /Chart Plotter

- Furuno Navnet 3D GPS/WAAS receiver
- Furuno Navnet 3D Sirius satellite weather receiver
- Furuno Navnet 3D Network sounder(1kW) less transducer
- Keel Mounted Airmar stainless steel 50/200kHz 1kW Transducer
- Simrad AP28 Autopilot system
- (2) Icom M604 VHF radio with remote microphone
- Icom HM-162 Command Mic III (Installed in Salon area)
- ACR100D Search light w/ point pad
- SeaTel Coastal 18 with 20" diameter
- Direct TV H21 DSS Receiver with RF remote control
- 110volt GFI Outlet with weather proof cover (flybridge)
- Weatherproof 12 volt Outlet w/cover (radio box)
- Large 40 watt Hailer Horn
- Hummingbird 1197c 10.4" LCD Chartplotter/Sounder and Transducers
- (2) Underwater Lights 35 watt Xenon

FLYBRIDGE

- Fiberglass hardtop w/300 watt molded-in quartz lights
- Trolling valves
- Bow thruster with buttons on the shifters
- Custom helm pod with single lever controls
- Power assist steering
- Additional power assist steering on port engine
- Recessed electronics boxes
- (17) rod rocket launcher on aft bridge rail
- Refrigerated flybridge drink box

- Costa 3-sided enclosure
- Costa track to track on front and sides of enclosure
- Costa strataglass upgrade for enclosure
- Ez2cy front 3 panels of enclosure
- Zippered vents at top of front 3 panels
- Engine exhaust temperature (pyrometer) gauges
- Stainless steel gas springs on flybridgde bench seats both seats
- Bridge installed without exposed fasteners
- Stidd helm seats
- Jump seat back rest
- Freshwater washdown
- Grabrail to follow contour of helm inboard side over access door
- Remote start and stop water maker
- Forward cool box - frig/freezer
- Small freezer under forward seat
- 18" Bomar hatch in hardtop above companion helm seat
- Power actuated drop down radio box
- Outriggers, Rupp with spreaders - silver outriggers w/gold spreaders
- Electric teaser reels

COCKPIT

- Cockpit speakers
- Transom coaming with gate without fishbox
- Hook and eye for transom
- Release rocket launcher
- Transom swim steps grabrails both sides of transom door

- Eskimo ice machine with discharge into cockpit sole box
- Awlgrip lazarette
- Y-valve for fresh and salt water washdowns in cockpit
- Refrigerated cockpit step box
- Dual thermostat for cockpit freezer
- Stainless steel gas springs for fish box lids
- Stainless steel gas springs for port & stbd sole box lids
- Stainless steel gas springs for lazarette lid
- Oil change outlets in cockpit starboard locker
- Fishboxes have macerator pumps
- (6) rod holders port and starboard haunches
- Total of (9) rod holders in the gunnels for fishing. (2) on each the port and starboard gunnel with (5) across the transom gunnel. All of the rod holders have electric outlets for down riggers.
- (2) 12 volt outlets under the port and starboard gunnels for electric Kite reels
- Hook hangers under coaming for shore cord

DECK

- Bow pulpit
- Lewmar ocean 3 windlass (w/50' chain + 250' braided line + addl 50' braided line)
- Fresh water washdown at bow inside anchor locker
- Painted rub rail to match gel coat
- Burgee staff on bow rail
- Push button catches on all cockpit & flybridge doors
- Flybridge handrails that wrap around front windshield

HULL

- Color snow white
- Bottom paint-Viking blue
- Boot stripe-Viking blue
- Fiberglass side thru-hulls
- Prop pockets to reduce draft
- Awlgrip forward bilge
- Awlgrip anchor locker

ENGINE ROOM

- Upgraded twin diesel engine package MAN V12 1550CRM with 1900 hours and 2000 hour service was completed in January 2015
- Water maker 700 gpd with auto backflush
- Fuel priming pumps 24v
- Awlgrip engine room
- Generator Onan 21.5
- Generator gas-water separator
- Awlgrip brass thru-hulls & sea strainers in engine room & forward bilges
- Dual power steering pumps
- Delta T engine room ventilation system
- Eskimo ice chipper
- Oil exchange system plumbed to dockside insert in cockpit

EXCLUSIONS

- Owner's tools, equipment and personal belongings.

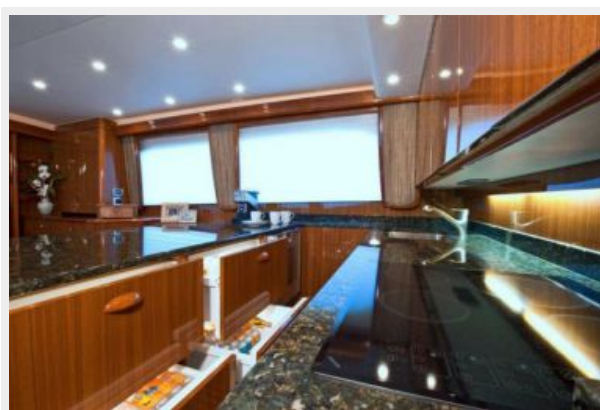
Исключения

При продаже яхты исключаются личные вещи владельца.

Отказ от ответственности

Компания предоставляет описание судна или яхты добросовестно, но не может гарантировать точность этой информации, а также не ручается за техническое состояние. Покупатель должен проинструктировать своих агентов или оценщиков исследовать представленную информацию более подробно, по собственному желанию. Продажа судна или яхты, изменение цены или снятие с продажи будет происходить без предварительного уведомления.

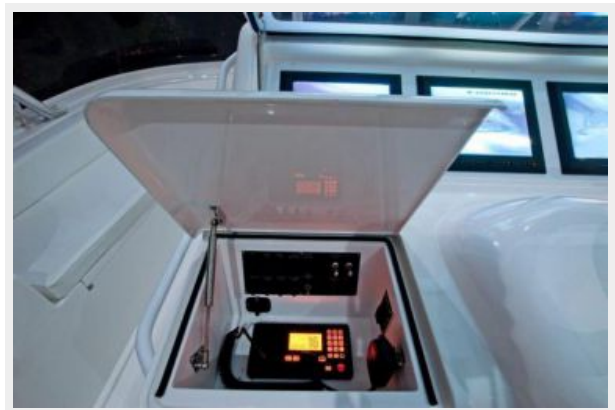
ФОТОГРАФИИ



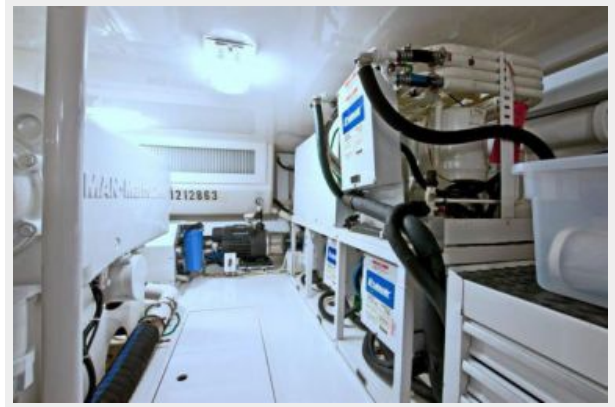
















КОНТАКТЫ

Андрей Шестаков (Andrey Shestakov) – ведущий яхтенный брокер отдела продаж яхт и судов компании Shestakov Yacht Sales Inc. Официальный представитель Shestakov Yacht Sales Inc. для русскоговорящих клиентов в центральном офисе компании в Майами/Форт Лодердейл/Флорида/США.

Контактная информация

Email: andrey@shestakovyachtsales.com

Web: shestakovyachtsales.com

Телефоны

Краснодарский край: **+7(918)465-66-44**

США, Майами, Флорида: **+1(954)274-4435**

Время работы

Понедельник – Суббота: **9:00 - 21:00**
EDT

Воскресенье: **Закрето**

Адрес



Harbour Towne Marina, 850 NE 3rd St,
STE 213, Dania, FL 33004