

STILL KICKIN — LIGHTNING



Судостроитель: LIGHTNING

Год постройки: 2007

Модель: Катер для спортивной рыбалки

Цена: ЦЕНА ЯХТЫ ПО ЗАПРОСУ

Местонахождение: United States

Длина общая: 64' 0" (19.51m)

Ширина: 18' 6" (5.64m)

Макс. осадка: 5' 2" (1.57m)

Крейс. скорость: 34 Kts. (39 MPH)

Макс. скорость: 42 Kts. (48 MPH)

Купить Still Kickin — LIGHTNING а также выбрать подходящую вам яхту из нашего каталога яхт вам поможет опытный яхтенный брокер Андрей Шестаков. На сегодняшний день компания Shestakov Yacht Sales Inc. имеет большое количество яхт в собственном списке продаж, а также тесно сотрудничает со всеми крупными яхтенными производителями по всему миру.

Для того чтобы купить яхту Still Kickin — LIGHTNING а также проконсультироваться по любому вопросу связанному с покупкой, продажей, чартером яхт позвоните по телефону **+7(918)465-66-44**.

ОГЛАВЛЕНИЕ

ОГЛАВЛЕНИЕ	2
ХАРАКТЕРИСТИКИ	6
Основная информация	6
Размеры	6
Скорость, вместимость и масса	6
Размещение	6
Корпус и палуба	6
Информация о двигателе	7
ПОДРОБНОЕ ОПИСАНИЕ	8
Vessel Walkthrough	8
Salon	8
Galley	8
Day Head	8
Master Stateroom-Starboard	8
Master Head	8
VIP Stateroom-Centerline Forward	9
VIP Head	9
Guest Stateroom	9
Flybridge	9
Electronics & Navigational Equipment	9
Cockpit	10
Fishing Equipment	10
Engine Room/Mechanical Equipment	10
Generator Room	10
Pump Room	10
Deck and Hull	11
Исключения	11
Отказ от ответственности	11

ФОТОГРАФИИ	12
Salon	12
Salon	12
Salon	12
Salon	12
Salon	12
Galley	12
Galley	13
Galley	13
Galley	13
Master Stateroom	13
Master Stateroom	13
Master Stateroom	13
Master Head	14
Forward Stateroom	14
Forward Stateroom	14
Forward Stateroom	14
Forward Stateroom	15
Forward Head	15
Forward Head	15
Guest Stateroom	15
Guest Stateroom	16
Guest Stateroom	16
Guest Head	16
Guest Head	16
Flybridge	17
Flybridge	17
Flybridge	17
Flybridge	17

Flybridge	17
Flybridge	17
Flybridge	18
Flybridge	18
Cockpit	18
Cockpit	18
Cockpit	18
Cockpit	18
Cockpit	19
Cockpit	19
Cockpit	19
Cockpit	19
Cockpit	20
Cockpit	20
Engine Room	20
Engine Room	20
Engine Room	21
Engine Room	21
Engine Room	21
Engine Room	21
Engine Room	21
Engine Room	22
Engine Room	22
Engine Room	22
Engine Room	22
Engine Room	22
Engine Room	23
Still Kickin	23
Still Kickin	23
Still Kickin	23
Stern Profile	24

Bow Profile	24
КОНТАКТЫ	25
Контактная информация	25
Телефоны	25
Время работы	25
Адрес	25

ХАРАКТЕРИСТИКИ

Основная информация

Тип судна: Катер для спортивной рыбалки

Модельный год: 2008

Год постройки: 2007

Страна: United States

Открытая палуба мостика: Да

Кубрик: Да

Размеры

Длина общая: 64' 0" (19.51m)

Ширина: 18' 6" (5.64m)

Макс. осадка: 5' 2" (1.57m)

Скорость, вместимость и масса

Крейс. скорость: 34 Kts. (39 MPH)

Макс. скорость: 42 Kts. (48 MPH)

Водоизмещение: 93000 Pounds

Вместимость воды: 300 Gallons

Вместимость сточного бака: 40 Gallons

Объем топливного бака: 1700 Gallons

Размещение

Всего кают: 3

Корпус и палуба

Материал корпуса: Cold Molded

Информация о двигателе

Двигатели: 2

Производитель: Caterpillar

Модель: C32

Тип двигателя: Inboard

Тип топлива: Diesel

ПОДРОБНОЕ ОПИСАНИЕ

Vessel Walkthrough

Upon entering the salon you will see a high gloss maple with granite countertops, a leather L-shaped sofa to port with storage below, seating 6 and sleeping 2. Ships service panel and pop-up TV with surround sound stereo. Galley up service with custom offset bar stools, stainless steel sink and Diva induction cooktop to starboard. Wine cellar drawer storage to port, (4) U-line refrigerator and freezer drawers, incredible custom fitted cabinets and drawer storage. Sealed cork galley flooring. Four steps down the companionway finds the master stateroom with private head to starboard and a day head / shower / laundry room to port. Forward to port is a guest stateroom and at the forepeak is the VIP Suite with private head. New carpet, soft goods, and AC throughout the entire boat.

Salon

- Large L-Shaped sofa to port with storage
- Custom ottoman with storage
- New carpeting
- Electrical panel
- Pop-up Sharp flat panel TV
- NEW Sat TV
- Stereo system
- BluRay DVD Player
- Bar stool seating

Galley

- U-Shaped galley
- Granite counter tops with maple bullnose
- Diva electric cooktop
- (2) Under counter U-Line refrigerator/freezers
- GE Profile convection microwave
- Large storage areas
- Built-in wine cooler

Day Head

- Raritan head
- Shower
- Mirrored vanity
- Kohler sink with faucet
- Granite counter top and floors

Master Stateroom-Starboard

- High gloss cherry wood throughout
- Walkaround full-sized bed with storage below, lying athwartship, with new mattress and fabrics
- Matching granite night stands with storage
- Mirrored full dressing area with his/hers closets
- All closets cedar-lined
- Tremendous amount of closet and drawer space
- Headliner with recessed LED lighting
- Drop down ceiling mounted SAT TV
- Ensuite head

Master Head

•Raritan fresh water electric marine head •Kohler sink with faucet •Towel racks •Granite flooring and countertops •Mirrored medicine cabinet •Large stall shower with designer faucet

VIP Stateroom-Centerline Forward

•High gloss cherry wood throughout •Located forward with criss-cross bunks - queen upper and single lower •Bomar hatch •Recessed LED lighting •12V Rope accent lighting •Cedar-lined storage closets and drawers •Sharp 20" Aquos TV / JVC AM/FM/CD Stereo •Padded walls •Space saving radius door to ensuite head •Dressing mirrored storage •Stereo system •A/C controls •Mirrored bulkhead •Reading light

VIP Head

•Large stall shower with molded-in seat •Designer stainless steel faucets and towel racks •Kohler sink •Raritan fresh water electric marine toilet •Vanity mirror with medicine cabinet •Granite counters and floor

Guest Stateroom

•Over/under twin bunks •Reading lamps •(2) Sharp Aquos TV Sets •Stereo •Cedar-lined high gloss cherry wood closets and counters •Recessed LED lighting •Generous below bunk storage /access •Carpeting

Flybridge

•All new cushions and enclosure •Generous storage under all seating, including locking rod/gaff storage •Aft observation seat - starboard side •(2) Pompanette teak captain's chairs with stainless steel pedestals •Helm A/C unit located port of helm •Custom teak helm pod with single lever controls with bow thruster buttons •Bridge rail rocket launcher with (8) rod holders •(2) US9-R Miya epoch electric teaser reels •Drop down electronics box •Hydraulic outrigger controls

Electronics & Navigational Equipment

•New Garmin electronics (2) 8215 Displays •New Fusion stereo •Blue SEA DC distribution panel 8 gang •(2) NVTI Point Pad URP-102 Spotlight •ACR Searchlight remote •Fireboy automatic system •New KVH SAT TV •New Fusion iPod docking station •New Chirp Transducer •Maxwell up/down windlass control •17" Furuno NavNet monitors with remote keypad •Start / stop ignition switches •Ritchie Power Damp Plus compass •KVH Satellite TracPhone •(2) Icom IC-M604 VHF Radios with remote mics •Simrad Autopilot AP24 •Garmin Digital Depth / Temp / Speed •(2) Caterpillar electronic engine monitors •ACR EPIRB •Courtesy / chart / lighting •Ocean LED fish strobe

Cockpit

- 238 Square ft with full air conditioned and shaded mezzanine
- Engine room access
- NEW teak decks - July 2015
- Full sized pompanette rocket launcher and offset stainless steel stanchion
- Transom fishbox
- Recessed side lockers
- Tuna door with gate pass through
- Lazarette access
- Built-in cabinetry storage
- Separate ice and bait bins
- Cockpit freezer
- Refrigerated storage
- Bridge access ladder - aluminum with teak steps
- Full canvas cover
- Cockpit panorama action camera
- Offshore solutions sea chest bait pump system

Fishing Equipment

- Bosch Full Tuna Tower 8' Gap with molded hardtop
- Electric drop down electronics box
- Recessed lighting throughout
- Built-In storage and fresh water washdown
- (8) Rod launcher back band aft
- (6) Total clear out rod holders
- (6) Gunwale mounted Rupp rod holders
- (8) Hole Pompanette teak rocket launcher with storage
- Offset stainless steel pedestal
- Lindgren-Pitman Deep drop plugs

Engine Room/Mechanical Equipment

- Twin Caterpillar C-32 1675 HP Engines - 2700hrs
- Completely faired and awlgripped
- Diamond plate flooring throughout walkway
- Fireboy Fire suppression system
- Charles 60amp Battery charger
- Cruisair 16000 BTU AC unit to cool engine room
- 12V Engine vents / blowers
- Fresh Water Spigot and 15' hose
- (2) Dual 2020 Series Racor fuel filters
- Engine room cameras
- Dripless shaft seals with spares
- Power assisted sea star steering reservoir
- New LED Lighting

Generator Room

- Air compressor
- Northern Lights Model M864W.3 with 3400 hours
- Generator has major service completed
- Paneltronics 12/110/240V breaker panel
- Charles 100 amp battery charger
- Lindgren-Pitman electric reel converter box
- Stingray 110V Water pump
- Dual Dayton 110V AC pumps
- 600PPD Eskimo ice machine, recently serviced & rebuilt
- Sea Recovery "Aquamatic" water maker serviced
- Glendinning 50 amp electric shore retrieve
- Marsh AC mezzanine refrigeration pump
- Fluorescent lighting throughout
- Total new HAVAC system

Pump Room

- (4) Cruisair AC units - all new 6/15/15
- Reverso fuel transfer pump
- (2) Fuel sight gauges
- Fluorescent lighting
- Y-Valve sanitation
- Raritan 1700 Series 20-gallon water heater
- Stingray 110V fresh water pump
- Headhunter backup fresh water pump
- Headhunter expansion water tank
- Engine room has been repaired

Deck and Hull

•Painted teak transom •Bottom paint, hull & gelcoat work done by Eagle Eye Marina

Исключения

При продаже яхты исключаются личные вещи владельца.

Отказ от ответственности

Компания предоставляет описание судна или яхты добросовестно, но не может гарантировать точность этой информации, а также не ручается за техническое состояние. Покупатель должен проинструктировать своих агентов или оценщиков исследовать представленную информацию более подробно, по собственному желанию. Продажа судна или яхты, изменение цены или снятие с продажи будет происходить без предварительного уведомления.

ФОТОГРАФИИ

Salon



Salon



Salon



Salon



Salon



Galley



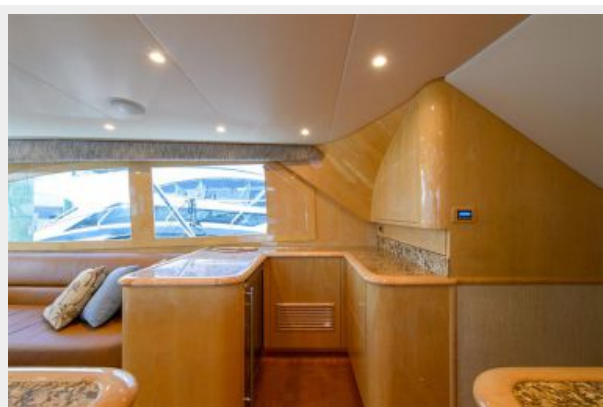
Galley



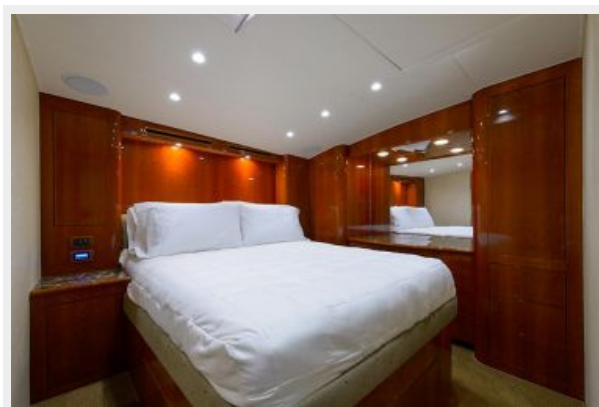
Galley



Galley



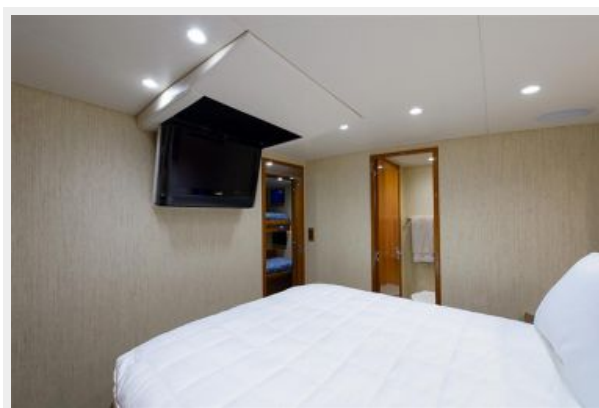
Master Stateroom



Master Stateroom



Master Stateroom



Master Head



Forward Stateroom



Forward Stateroom



Forward Stateroom



Forward Stateroom



Forward Head



Forward Head



Guest Stateroom



Guest Stateroom



Guest Stateroom



Guest Head



Guest Head



Flybridge



Flybridge



Flybridge

Flybridge



Flybridge



Flybridge



Flybridge



Flybridge



Cockpit



Cockpit



Cockpit



Cockpit



Cockpit

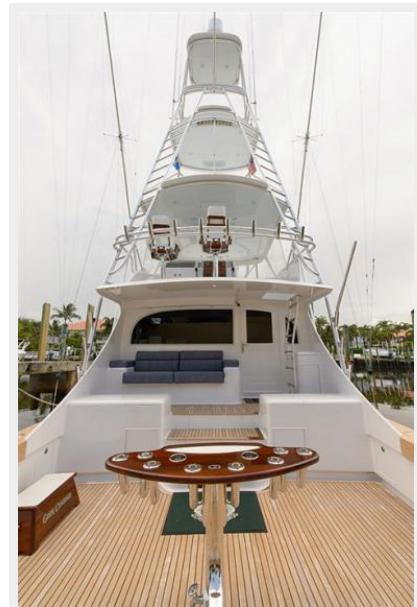


Cockpit

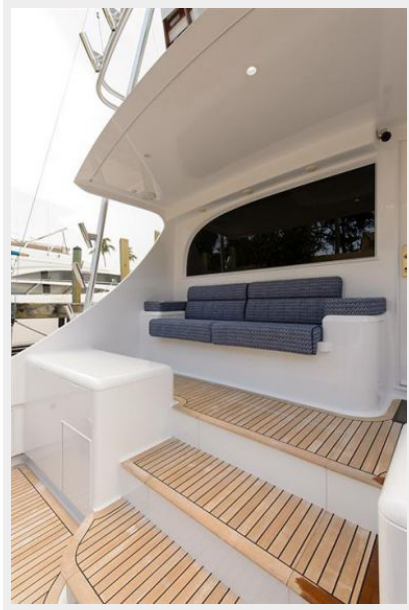


Cockpit

Cockpit



Cockpit



Cockpit



Engine Room



Engine Room



Engine Room



Engine Room



Engine Room



Engine Room



Engine Room



Engine Room



Engine Room

Engine Room



Engine Room



Still Kickin



Still Kickin



Still Kickin



Stern Profile



Bow Profile



КОНТАКТЫ

Андрей Шестаков (Andrey Shestakov) – ведущий яхтенный брокер отдела продаж яхт и судов компании Shestakov Yacht Sales Inc. Официальный представитель Shestakov Yacht Sales Inc. для русскоговорящих клиентов в центральном офисе компании в Майами/Форт Лодердейл/Флорида/США.

Контактная информация

Email: andrey@shestakovyachtsales.com

Web: shestakovyachtsales.com

Телефоны

Краснодарский край: **+7(918)465-66-44**

США, Майами, Флорида: **+1(954)274-4435**

Время работы

Понедельник – Суббота: **9:00 - 21:00**
EDT

Воскресенье: **Закрито**

Адрес



Harbour Towne Marina, 850 NE 3rd St,
STE 213, Dania, FL 33004