

FOXSEA — TA SHING YACHTS



Builder: TA SHING YACHTS

Year Built: 1988

Model: Cruising Sailboat

Price: PRICE ON APPLICATION

Location: United States

LOA: 43' 0" (13.11m)

Beam: 13' 8" (4.17m)

Min Draft: 6' 3" (1.91m)

Our experienced yacht broker, Andrey Shestakov, will help you choose and buy a yacht that best suits your needs **FoxSea — TA SHING YACHTS** from our catalogue. Presently, at Shestakov Yacht Sales Inc., we have a wide variety of yachts available on our sale's list. We also work in close contact with all the big yacht manufacturers from all over the world.

If you would like to buy a yacht **FoxSea — TA SHING YACHTS** or would like help answering any questions concerning purchasing, selling or chartering a yacht, please call **+1(954)274-4435**

TABLE OF CONTENTS

TABLE OF CONTENTS	2
SPECIFICATIONS	3
Overview	3
Basic Information	6
Dimensions	7
Speed, Capacities and Weight	7
Accommodations	7
Hull and Deck Information	7
Engine Information	7
PHOTOS	8
CONTACTS	13
Contact details	13
Telephones	13
Office hours	13
Address	13

SPECIFICATIONS

Overview

Just back in the States - call for an appointment!

FoxSea is a meticulously maintained, solid cruising sailboat fully equipped for long distance cruising. Ta Shing built the Taswell 43 in Taiwan in the highest standards of cruising sailboats. She is in Mexico and returning to the US in the next couple of weeks. Don't miss this opportunity to get a first class cruising boat. FoxSea has a full updated set of sails, and recently replaced standing rigging. The standing rigging was replaced within the last few months when the mast was pulled and completely painted and re-conditioned.

Boat Name FoxSea **Specs** Builder: Ta Shing Designer: Bill Dixon Flag of Registry: United States Keel: Fin Hull Shape: Monohull **Dimensions** LOA: 43 ft 0 in Beam: 13 ft 8 in LWL: 38 ft 5 in Minimum Draft: 6 ft 3 in Displacement: 23500 lbs Ballast: 9300 lbs **Engines** Engine 1: Engine Brand: Yanmar Year Built: 1988 Engine Model: 4JH-DTE Engine Type: Inboard Engine/Fuel Type: Diesel Engine Hours: 3381 Propeller: 3 blade propeller Drive Type: Direct Drive Engine Power: 77 HP **Tanks** Fresh Water Tanks: 3 (150 Gallons) Fuel Tanks: 2 Aluminum (132 Gallons) **Accommodations** Number of double berths: 2 Number of cabins: 2 Number of heads: 2 **Electronics** VHF Compass Plotter Log-speedometer Wind speed and direction Autopilot Depthsounder Navigation center Radar TV set DVD player Repeater(s) Cockpit speakers Radio GPS **Sails** Trisail Furling mainsail Gennaker/Cruising spinnaker Storm jib Furling genoa **Rigging** Steering wheel Spinnaker pole Electric winch **Inside Equipment** Electric bilge pump Battery charger Electric head Refrigerator Marine head Heating Fresh water maker Sea water pump Deep freezer Hot water Air conditioning Oven Manual bilge pump Microwave oven **Electrical Equipment** Shore power inlet Inverter Generator Electrical Circuit: 12V **Outside Equipment/Extras** Radar reflector Liferaft Cockpit shower Cockpit cushions Cockpit table Solar panel Wind generator Swimming ladder Total Liferaft Capacity: 6 Electric windlass **Covers** Genoa cover Mainsail cover Bimini Top

Accommodations

The interior is finished in the best tradition of Taiwan teak joinery. FoxSea features solid teak and holly cabin sole with numerous removable floorboards. The companionway leads five steps down from a large center cockpit directly to the saloon. To port is a large octagonal dinette that accommodates six comfortably. Opposite, in the forward part of the saloon is a comfortable forward facing nav station. Aft of the nav station on the starboard side is a U-shaped galley next to the companionway. A full height passageway leads aft to the owner's stateroom. The owner's stateroom features a very comfortable centerline queen berth with cushioned seats each side. Deep hanging lockers and drawers provide ample storage for extended cruising. There is also a built-in vanity with a huge mirror. The aft head has a separate full size shower compartment and an electric head. The VIP stateroom is forward. It features a queen pullman berth, hanging locker, drawers under

the berth, vanity and outboard shelves. The guest head with shower is forward.

- Comfortable dining for six
- Centerline queen owner's berth
- Separate shower
- Cruisair 16,000 btu reverse cycle A/C with digital control
- Ample opening hatches for light and ventilation
- Comfortable forward facing nav station
- Louvered locker doors
- Panel & frame cabin doors with louvers
- Teak staving hull ceilings

Galley

- Force 10 3 burner propane stove with oven
- Grunert refrigerator and freezer
- U-shaped galley
- Ample counter and storage space
- Curved door liquor locker between galley and nav station

Deck and hull

- No teak deck - teak removed, decks re-glassed and painted, all deck hardware removed and rebedded 2007!
- Hull painted 1999!
- Bottom paint - NEW 2015!
- Main fuel tank 84 gal. aluminum - NEW 2006!
- Spare 48 gal. aluminum fuel tank with transfer pump under sole
- All hatches removed and returned to manufacturer - NEW lenses, seals and latches 2007!
- Monitor wind vane steering
- Sugar scoop transom
- Fully enclosed cockpit with isinglass curtains and screens
- Cockpit cushions
- Hot and cold fresh water cockpit shower
- Fresh water and sea water deck washdowns
- Swim ladder mounted on side
- 45# CQR anchor with 200' 3/8" chain and 100' rope rode
- Bruce anchor with 100' chain and 200' rope rode
- Fortress aluminum anchor
- 85# fisherman hurricane anchor
- Additional rode - 20' chain, 100' rope
- Parachute sea anchor
- Drogue
- 3 10# ABC extinguishers - NEW 2014!

- **EPIRB - NEW 2014!**
- **3 inflatable lifejackets with harness**
- **6 foam Type II PFDs**
- **Type IV horseshoe throwable**
- **Dan Buoy throwable**
- **MOM8**
- **Winslow 6 person Super-Light offshore plus life raft in White Pelican Case Cradle and Hard Pack - certified until 2017!**
-

Sails and rigging

- **UK 9.55 oz 397 sq. ft. in mast furling mainsail - NEW 2007!**
- **UK 130% roller furling genoa 9 oz 749 sq. ft. - NEW 2007!**
- **Mainsail roller furler - Returned to Forspar and rebuilt with new bearings 2015!**
- **Storm jib**
- **Storm mainsail - NEW, never used!**
- **Hanked on staysail**
- **Mast mounted spinnaker pole**
- **Carbon fiber whisker pole mounted on stanchions**
- **Power winch for main and genoa**
- **Wichard boom brake**
- **Rigid boom vang**
- **Running backstays - NEW 2015!**
- **Chainplates - REDONE 2009!**
- **Standing rigging - NEW 2009!**
- **Mast and boom - taken down, reconditioned, painted and stepped 2015!**

Electrical and mechanical

- **Yanmar 4JH-DTE turbo 77 hp diesel, 3381 hrs.**
- **Self actuating fire extinguisher in engine room**
- **PYI dripless shaft seal**
- **MaxProp 3 blade prop - factory rebuilt 2010!**
- **Fisher Panda 8kw generator - 5 hrs. on NEW engine, back end replaced 2009, 650 hrs.**
- **SK DB500 AC 28 gph watermaker**
- **D400 wind generator - NEW 2013!**
- **Maxwell 2200 electric windlass**
- **Solar panels, 540 watts with Blue Sky Solar Boost 50 MPPT controller**
- **MasterVolt Mass Combi 12/4000-200 sine wave inverter/charger, 4000 watt inverter and 200 watt charger**
- **2 manual and 2 electric bilge pumps**

Electronics

- Simrad CX44 chartplotter with DS34 duplicate display at nav station
- Bluetooth and wifi connections to navigation equipment in the cockpit
- Furuno RD-30 GPS
- ICOM IC-M604 VHF
- ICOM IC-M802 SSB
- Pactor III modem with Bluetooth or USB connection
- Seacas AIS receiver
- Simrad IS 15 wind speed and direction
- Simrad IS 11 multifunction display
- Simrad AP25 autopilot
- Simrad DX60 radar, 36 nautical miles, 4kw
- Conex digital barometer
- Equity digital clock
- Sharp 19" flatscreen TV with DVD player
- TV antenna
- Stereo with speakers in saloon and cockpit

Broker's Comments

Lowest priced Taswell 43 on the market!

Just back in the States - call for an appointment!

FoxSea is a meticulously maintained, solid cruising sailboat fully equipped for long distance cruising. Ta Shing built the Taswell 43 in Taiwan in the highest standards of cruising sailboats. She is in Mexico and returning to the US in the next couple of weeks. Don't miss this opportunity to get a first class cruising boat. FoxSea has a full updated set of sails, and recently replaced standing rigging. The standing rigging was replaced within the last few months when the mast was pulled and completely painted and re-conditioned.

Basic Information

Category: Cruising Sailboat

Model Year: 1988

Year Built: 1988

Country: United States

Dimensions

LOA: 43' 0" (13.11m)

LWL: 38' 5" (11.71m)

Beam: 13' 8" (4.17m)

Min Draft: 6' 3" (1.91m)

Speed, Capacities and Weight

Displacement: 23500 Pounds

Water Capacity: 150 Gallons

Fuel Capacity: 132 Gallons

Accommodations

Total Cabins: 2

Total Berths: 2

Total Heads: 2

Hull and Deck Information

Hull Material: Fiberglass

Hull Configuration: Monohull

Engine Information

Engines: 1

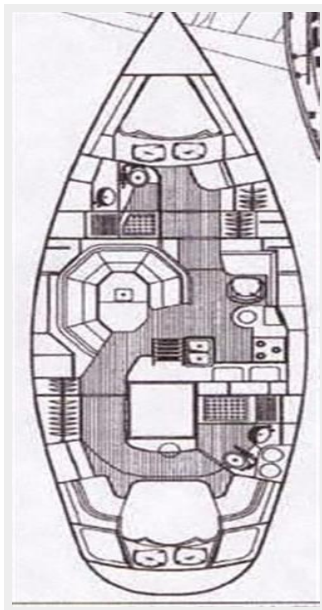
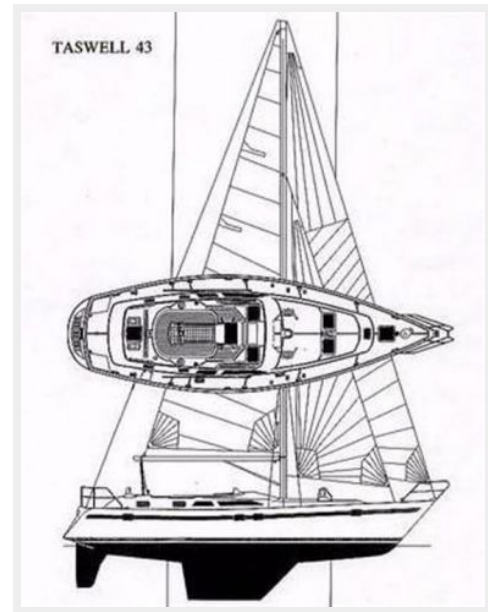
Manufacturer: Yanmar

Model: 4JH-DTE

Engine Type: Inboard

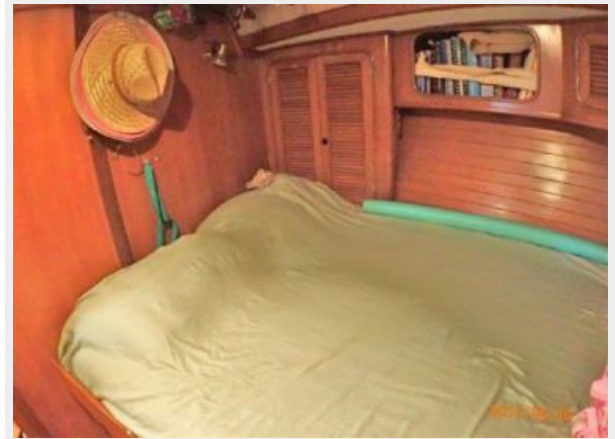
Fuel Type: Diesel

PHOTOS











CONTACTS

Andrey Shestakov, leading yacht broker of the sales department of Shestakov Yacht Sales Inc. Shestakov Yacht Sales Inc., the official representative of the Miami/Fort Lauderdale FL headquarters.

Contact details

Email: andrey@shestakovyachtsales.com

Web: shestakovyachtsales.com/en/

Telephones

USA: +1(954)274-4435

Office hours

Monday – Saturday: **9:00 - 21:00** EDT

Sunday: **closed**

Address



Harbour Towne Marina, 850 NE 3rd St,
STE 213, Dania, FL 33004