

WIZARD — DE VRIES LENTSCH (DUTCH BUILT)



Builder: De Vries Lentsch (Dutch Built)

Year Built: 1985

Model: Motor Yacht

Price: PRICE ON APPLICATION

Location: Italy

LOA: 100' 0" (30.48m)

Beam: 24' 1" (7.34m)

Min Draft: 7' 2" (2.18m)

Max Draft: 7' 10" (2.39m)

Cruise Speed: 11 Kts. (13 MPH)

Max Speed: 12 Kts. (14 MPH)

Our experienced yacht broker, Andrey Shestakov, will help you choose and buy a yacht that best suits your needs **Wizard — De Vries Lentsch (Dutch Built)** from our catalogue. Presently, at **Shestakov Yacht Sales Inc.**, we have a wide variety of yachts available on our sale's list. We also work in close contact with all the big yacht manufacturers from all over the world.

If you would like to buy a yacht **Wizard — De Vries Lentsch (Dutch Built)** or would like help answering any questions concerning purchasing, selling or chartering a yacht, please call **+1(954)274-4435**

TABLE OF CONTENTS

TABLE OF CONTENTS	2
SPECIFICATIONS	5
Overview	5
Basic Information	5
Dimensions	5
Speed, Capacities and Weight	5
Accommodations	6
Hull and Deck Information	6
Engine Information	6
DETAILED INFORMATION	7
Introduction	7
Accommodations	7
Aft Deck	8
Galley	8
Crew Quarters	9
Pilothouse	9
Mechanical	10
Safety & Fire Protection	11
Electrical Equipment	12
Exclusions	13
Disclaimer	13
PHOTOS	14
Queen lower port guest stateroom	14
Guest head marble detail	14
Completely re-modeled guest bathroom	14
Updated queen guest cabin-port	14
Queen guest- port	14
Queen VIP stateroom	14

Queen VIP stateroom	15
Guest ensuite head	15
Pilothouse. Note - Wing controls on Portuguese Birdge	15
VIP	15
Radio room/study/office/TV room aft of pilothouse	15
Pilothouse chart drawers	15
King on-deck master suite	16
Master ensuite	16
Remodeled master bath.	16
On-deck master suite	16
Master head	17
Master head detail	17
Large covered aft deck with bar	17
Main salon looking for'd	17
Main salon	17
Main salon looking aft	17
Dining table	18
Galley	18
Galley	18
Lounge area on coach roof	18
Fore-deck from Portuguese bridge	19
Fore-deck seating area	19
Aft Lazzarette storage -freezer and washer & dryer	19
Heavy duty dual anchor handling gear	19
Aft deck stairs leading to boat deck.	20
Clean and well maintained engine room with plenty of room!	20
Spacious full walk-around Engine room	20
Seating area aft of pilothouse	20
Large boat-deck	21

Boat deck with access stairs to aft deck.	21
CONTACTS	22
Contact details	22
Telephones	22
Office hours	22
Address	22

SPECIFICATIONS

Overview

Wizard is in great condition and maintained to Class. Large spacious aft deck, 24' beam with walk-around side decks and on-deck master, make this a very desirable layout! She has received 2 extensive re-fits in the last 9 years, the last of which was completed in 2012 and included a transom extension, new teak decks, paint and all new lower deck guest accommodation including marble bathrooms. This "go to sea" Dutch pedigreed yacht is a great value in today's market, viewing is highly recommended.

Basic Information

Category: Motor Yacht

Model Year: 1985

Year Built: 1985

Country: Italy

Dimensions

LOA: 100' 0" (30.48m)

Beam: 24' 1" (7.34m)

Min Draft: 7' 2" (2.18m)

Max Draft: 7' 10" (2.39m)

Speed, Capacities and Weight

Cruise Speed: 11 Kts. (13 MPH)

Cruise Speed RPM: 1600 Kts.

Cruise Speed Range: 2000

Max Speed: 12 Kts. (14 MPH)

Displacement: 405650.56208 Pounds

Gross Tonnage: 188 Pounds

Water Capacity: 1188 Gallons

Holding Tank: 325 Gallons

Fuel Capacity: 7580 Gallons

Accommodations

Total Cabins: 4

Total Berths: 5

Sleeps: 8

Total Heads: 4

Crew Cabin: 2

Crew Berths: 3

Crew Sleeps: 4

Crew Heads: 2

Hull and Deck Information

Hull Material: Steel

Hull Configuration: Full Displacement

Hull Finish: Steel

Interior Designer: Michael Kirschstein

Engine Information

Engines: 2

Manufacturer: MERCEDES

Model: 424A

Engine Type: Inboard

Fuel Type: Diesel

DETAILED INFORMATION

Introduction

Launched in 1985, Wizard's excellent condition defies her age after \$3,000,000+ expended in two extensive refits in 2007 and 2012. Wizard is a pedigreed custom De Vries Lentsch design with Dutch construction and systems. The yacht has been maintained in Lloyds Class by full time crew for experienced owners. The oversized scantlings, redundant systems and full keel provide safe, comfortable worldwide cruising with a range of 3000+nm.

A tri-deck layout with sky lounge, four en-suite staterooms for nine guests with master on deck are comparable to much larger yachts. The master has a private office and large marble bath with tub and bidet. The full beam (24 ft.) VIP stateroom, queen guest and twin staterooms each also have bathrooms with marble, Grohe and Villeroy & Bosch fixtures. A large swim platform, remote controlled passerelle and voluminous walk-in lazarette enhance water access and sports activities. As examples of her volume, the covered aft deck with wet bar and dining area is 23 x 16 ft. connects to the 23 x 30 ft. sun deck above via a custom teak staircase.

All new teak decks, external finishes, lower guest accommodations, all bathrooms and neutral décor were completed in 2012.

The extensive equipment includes a high degree of redundancy sized for larger yachts. The reliable Mercedes main engines have less than 1000 hours SMOH and generators less than 2500 hours since new. Reliable, proven systems have been emphasized throughout. Examples include oversized Koop Nautic stabilizers, 400lb. HHP anchors (2), fuel centrifuge, triple hydraulic systems, and four life rafts.

Extensive mechanical, hull and Lloyds surveys (05/15) confirm her superior specification, ongoing maintenance and current condition. Wizard is equipped and prepared for an immediate Atlantic crossing or exploration of virtually any area. Currently cruising the Italian Riviera (09/15).

Accommodations

One can enter Wizard from the spacious aft deck, via a door to the salon or from the stb'd boarding door amidships from the walk-around deck. With her 24' beam, this allows for both walk-around side decks and a spacious salon with ding table to forward port. Proceeding forward is a companionway with on-deck powder room, on-deck galley entrance to port and stairwell leading down to guest accommodation and up to the full raised pilothouse. Proceeding forward is an owners study which leads to the on-deck master suite, with king bed and updated spacious marble bathroom, with combo tub/shower, W.C., bidet and sink. The three guest cabins below were all tastefully and completely re-done in the 2010-2012 refit, which includes new woodwork, softwoods, hardware and all new bathrooms, including extensive marble, Hans Grohe fixtures, Izewaren hardware and Villeroy & Bosch sinks. These staterooms are crisp, clean and defy the

age of the boat. Forward is a full beam VIP suite, with queen bed and ensuite head with large marble lined shower. There is a watertight, hidden access door leading to the crew quarters forward, for ease of service by the crew to the lower guest cabins. Next aft to port is another island queen stateroom with ensuite head and to starboard is a twin berth cabin, with hidden pullman and ensuite head.

Aft Deck

- All new design and construction in 2012 integrating the extended Bridge deck above with the "Euro-transom" and integrated swim platform arrangement creating a large and comfortable covered aft deck, not usually found on a yacht of this size, including:
- Spacious shaded aft deck with gated access to the swimming platform (starboard) and to the passarelle (port)
- 4 x waterproof loudspeakers (connected to main saloon entertainment) and LED lighting in deck head.
- Built-in upholstered settee
- Fixed varnished teak dining table with 4 loose chairs
- Custom teal varnished circular staircase up to Bridge deck (2012).
- Wet bar with fridge, icemaker and sink on starboard side
- Access to walk around side decks (engine room access port aft side deck) and salon.
- On the stern is an integrated teak swimming platform with substantial stainless steel swimming ladder. There is a hot and cold shower in the transom. (All new 2012)
- Stern built in retractable Opacmare stainless steel hydraulic and infra red controlled passarelle with railing and teak grating.
- Warping winches port and starboard

Galley

The on-deck galley has a private crew entrance on the port side deck, with access to the starboard entrance foyer and aft to dining salon internally. Equipment includes: Refrigerators - 1 x Samsung new 2007 front load model. 1 x Ariston new 2007 front load model.

Freezers - 2 x custom stainless steel ± 200 litres each front load model new in galley 1 x chest freezer – new 2012 in lazarette

Stove top -AEG Electrolux 4 plate ceramic new 2007 Oven -AEG Electrolux hot air includes grill new 2007 Microwave -AEG MCD 2660E new 2007 Hood - Faber, 3 speed fan new 2007 Dishwasher - AEG Electrolux Favourite 44860 new 2007 Laundry - Whirlpool new 2007 in crew laundry -Miele washer new 2012 in Owner's laundry -Miele dryer new 2012 in Owner's laundry Bosch vacuum cleaner. Karcher wet/dry vacuum cleaner Carpet/upholstery steam cleaner Pressure washer

Crew Quarters

Located on the lower deck with access from the port main side deck down a regular staircase and with further stewardess access in the aft bulkhead to the guest accommodation, aft. Bosun's locker/store under crew accommodation entrance staircase, which hinge up for good access

Offering berths for a total of 4 crew. There are two cabins with 2.00 x 0.75 meter bunks, head room of 1.95 meters. Each cabin has its own shower, washing and toilet and air-conditioning. There is adequate hanging and storage space.

The crew mess was updated in 2015 and is spacious with a semi-circular dinette and small galley for'd, with small sink, fridge and lockers; , air-conditioning and ventilation; 22" TV with DVD player; ZF Marine 400 monitoring panel.

Crew laundry is located in a separate locker to stb'd with small format washer and dryer. Air conditioning. Emergency deck hatch in deckhead.

Pilothouse

The full raised pilothouse with Portuguese bridge is accessed internally via the central staircase off the stb'd entrance lobby, or via 2 wing doors to the full walk-around upper deck. Functionally laid out with a helm chair, 2 person seat with chart table and a separate communications room aft. Navigation Equipment includes

Simrad. As per international rules.

Electric Simrad compass (new 2007) interfaced to GPS / autopilot/ radar/ chart plotter. Plastimo magnetic compass.

Ninglu Colour digital display.

Maretron DSM 200 NMEA 2000 Multi-function display showing: barometer, dew point, temperature, windspeed/direction & electronic gyro compass heading sensor (Maretron) Icom handheld vhf radios x 2

Furuno new 2007 digital screen. 1 x Gem electronic new 2007 with Arpa system.

Nobel Tec Plotter System new 2007 daylight model with charts of the Mediterranean. CD-rom type running on windows system make with 2 x Winmate 19 inch LCD colour displays. Interfaced to autopilot and GPS. Autopilot link track system.

Simrad AP50 new 2007 course alarm / interfaced to GPS.

Simrad GN 33 new 2007 interfaced to chartplotter / radar / and autopilot.

Electric type 24 volts at funnel.

Touch screen in wheelhouse/ engine room and crew mess with digital yacht information indicating/ engine controls / alarms and tank levels.

Barometer and Clock. Charts & Publications

Mechanical

Twin Mercedes 424 A, 12 cylinders diesel engines, built 1985 overhauled 2007. Original rating 404 kW @ 2300 RPM (550 HP) each. Engines with turbo charging, inter cooling system with water injected exhausts including dampers.

1 x alternator on each main engine. Separate external Racor diesel oil filters, generators have the same system. Approx. engine hours at July 2015 Port 845 hours Starboard 813 hours since 2007 reported overhaul.

Made ZF marine 400 a digital display for total engine service information including exhaust temp meters as well as tank levels and bilge alarms. There is a separate backup analogue system.

Stop- start controls and alarms at wheelhouse and engine room. Electric - mechanical micro commander for main engines in wheelhouse, two wing control including steering and bow-thruster control.

V-drive ZF BW 190 hydraulic gearboxes reduction 2.57 : 1 installed with separate oil cooling heat exchangers and flexible couplings.

Conventional packing system. 85 mm diam stainless steel 316 shaft. 4 blade bronze propellers.

All new chilled water piping system and 20 new Condaria fan coils installed 2012. . Three compressor reverse cycle chilled water plant installed 2007 with 3 new compressors (2013) and new fresh water pumps in 2012. New fresh air and exhaust fans 2012.

Separate self-contained Condaria air conditioning unit in new lazarette/laundry room 2012.

Reversed cycle from air conditioning chiller plant.

Cramm central power pack installed in the engine room for , boat crane, anchor winch and ER hatches. The system has 2 main engine driven hydraulic pumps plus an electric pump (new motor 2013) and a hand pump

Separate hydraulic power pack in the lazarette for the Opacmare pasarelle

SidePower SP550 hydraulic 42kW with 386mm diameter tunnel. Control from wheelhouse and two wing controls. (new 2012). Separate generator driven hydraulic pump and control valve in engine room

Vosper Wave Beta 3 non retractable fin stabilisers. NAIAD Marine System control, (new 2007)

Separate hydraulic power pack in engine room

Hydraulic system, with Servo hydraulic wheel pump at wheelhouse and joystick. Wing control equipped with joystick. Separate hydraulic power pack in engine room Two double Racor fuel filters between day tank and main engine filters. One Racor fuel filter for each generator. Fuel transfer system with electric and manual pump with manifold between all tanks.

Fuel-water separator, Alfa Laval MIB 303(new 2007) capacity \pm 1000 litres p/hr.

Fresh water; 2 x 220V (new 2007) Gianneschi e Ramacciotti heavy-duty pumps with pressure tank. Hot water system by 2x (new 2007) custom made boilers, electric heating system. Hot/Cold water shower at bathing platform. Water maker Idromar MC 3 J (x2) capacity \pm 8600 litres per day (new 2007).

Sewage Mini Biocon, treatment system, (new 2007)

Black water tank \pm 1,200 litres with heavy duty electric direct overboard system. Jet vacuum flush toilets.

2 x 220V electric heavy-duty pumps with manifold for bilge sections, direct overboard. Exchangeable by-pass back-up system with deck wash/fire fighting pump.

One heavy duty pump and exchangeable by-pass/back-up system with bilge system. Sea water and fresh water connections on side deck, fore deck, engine room, boat deck with hose .

Heavy duty mechanical engine room reversible ventilation system with fire shutters. Mechanical air ventilation system in cabins and bathrooms.

1 x air compressor unit

Safety & Fire Protection

4 SOLAS life rafts, (2012) 2 x Lifebuoys round model with flashlight and line. 1 man overboard vane/ with flashlight. 14 x life jackets. Flares in container.

Fire extinguishers - 15 x powder portable fire-extinguishers throughout the yacht. New 2007 FM 200 automatic fire-fighting system in engine room, operated from main deck. Manual fuel shut down and ventilation shut-off located outside of the engine room. Engine shut off controls are located at bridge.

New 2007 fire and smoke alarm system with acoustical signal with smoke detector located throughout the yacht with temperature sensors located in galley and crew mess. Fire-fight pump + hose and fire blanket in galley and engine room.

Burglar alarm - New 2007 made AVS system throughout interiors with acoustical alarm.

Alarm system - The Touch screen "Beijer- Model-Exter T 70" in the wheelhouse as well as the display in the crew mess and engine room are integrated with the fire fighting alarm system as well as bilge condition, main engines and generators.

1 EPIRB - x McMurdo new 2007 (New battery October 2013.)

SART - 2 x new 2007

CCTV - New 2007, monitors in wheelhouse and crew mess with four dome camera's located: aft deck, side decks and engine room.

Set of international code flags

Electrical Equipment

2 x 50 kW (at 1500 rpm) Onan MDCCG, 380V 3 phase, 50Hz. generators (new 2007) in sound shield box, driven by John Deere 4045 TFM 75A diesel. Start- stop control in engine room.

Generator hours at July 2015 - Port 2,281 hrs. Starboard 2,000 HRS (new 2007).

Main switchboard in Engine Room I (new 2007) with Voltage and Ampere meters, automatic fuse-breaker, switches and indication /control lamps .

Distribution switchboards throughout the yacht including wheelhouse, lazarette, guest accommodation and crew accommodation .

220V plugs throughout the yacht.

24V DC. 220V-50 Hz AC. 380V 50Hz AC

Start set: 1 x 24V per main engines, consisting of 2 maintenance free gel batteries of total 220 Amp. Year 2007 stowed in seaworthy boxes, in engine room.

Start set: 1 x 12 V for each generators consisting of 1 maintenance free gel batteries of 140 Amp. Year 2007 stowed in Seaworthy boxes in engine room.

Service set: 1 x 24 V, consisting of 4 maintenance free gel batteries of total 440 Amp. Year(2007) stowed in Seaworthy boxes, in engine room.

Emergency set: 1 x for VHF/ SSB etc. Emergency by-pass for start/service batteries. 2 x 50 kW(at 1500 rpm) make Onan in sound shield box.

1 x 24V- 100 Amp. Mastervolt automatic charger for service set. 1 x 24 V Mastervolt automatic charger for main engines set. 1 x charger for emergency set

All chargers new in (2007) 1 x Mastervolt new in (2007)

Shore power intake 380V- 63 Amp. in aft ship. Shore transformer in engine room.

Interior lights 12 V / 220 V LED in accommodation and aft main deck (new 2012). Some halogen lights in crew accommodation and wheelhouse. Red night lights in wheelhouse. TL-lamps in engine room.

24 V / 220 V deck lights on aft deck, side decks and boat deck. 3 x underwater lights in transom platform Transom floodlights

Exclusions

Owner's personal belongings.

Disclaimer

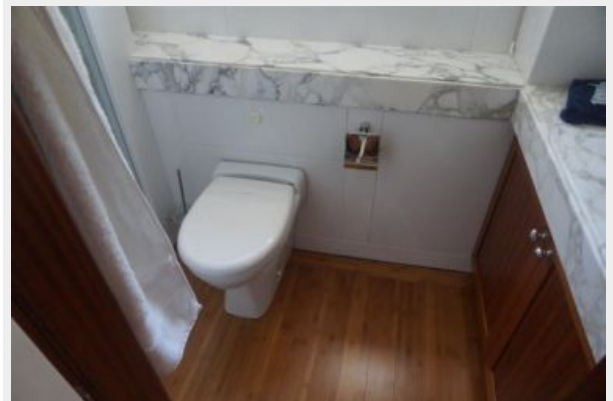
The Company offers the details of this vessel or yacht in good faith but cannot guarantee or warrant the accuracy of this information nor warrant the condition of the vessel. A buyer should instruct his representatives, agents, or his surveyors, to investigate such details as the buyer desires validated. This vessel or yacht is offered subject to prior sale, price change, or withdrawal without notice.

PHOTOS

Queen lower port guest stateroom



Guest head marble detail



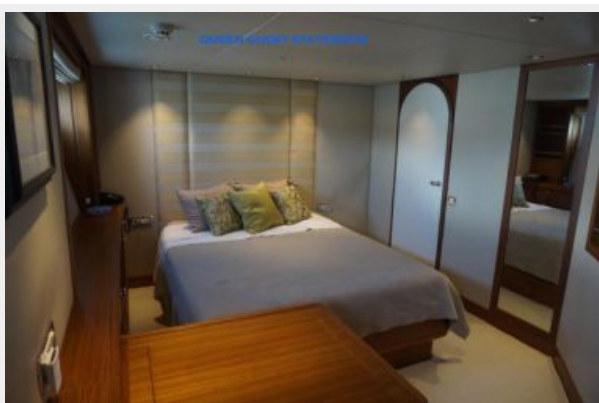
Completely re-modeled guest bathroom



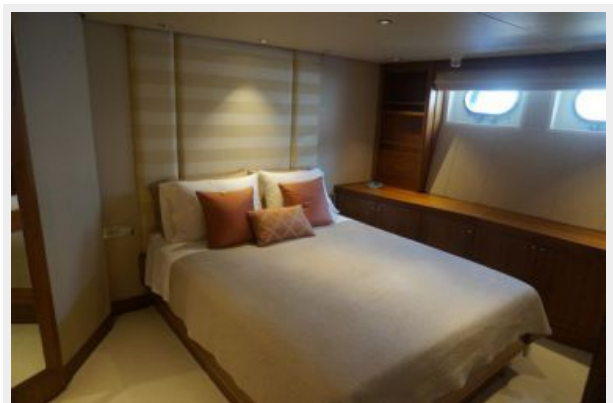
Updated queen guest cabin-port



Queen guest- port



Queen VIP stateroom



Queen VIP stateroom



Guest ensuite head



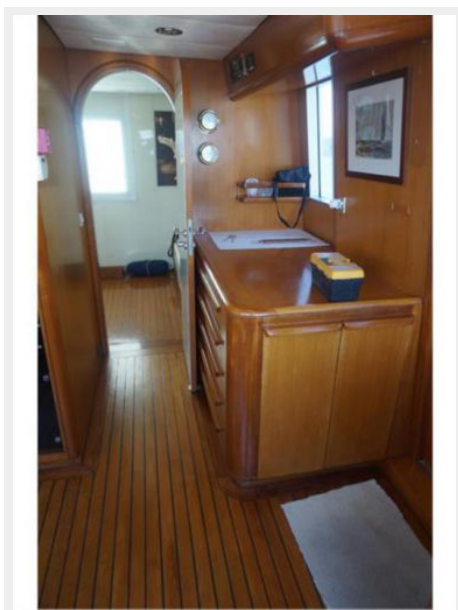
VIP



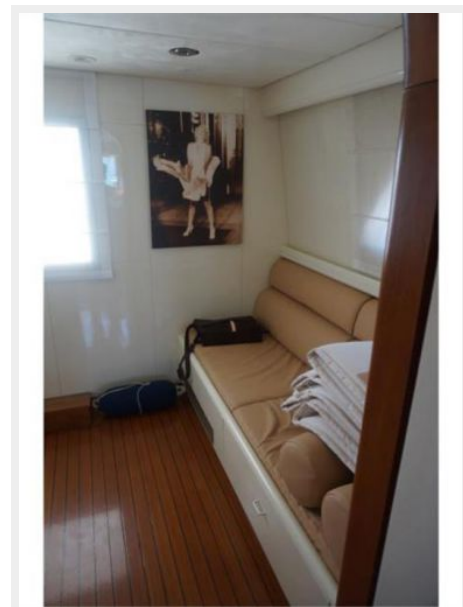
Pilothouse. Note - Wing controls on Portuguese Birdge



Pilothouse chart drawers



Radio room/study/office/TV room aft of pilothouse



King on-deck master suite

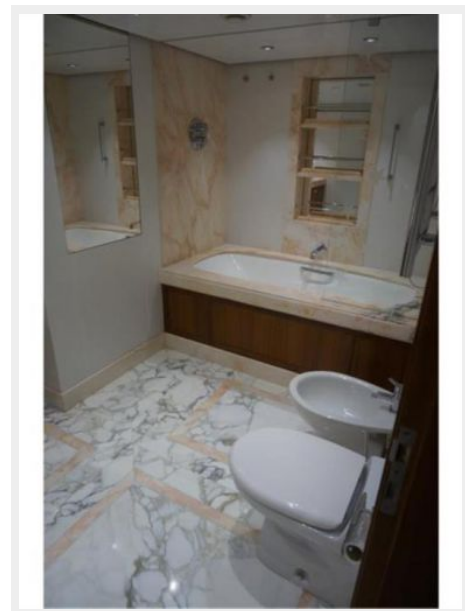


Master ensuite

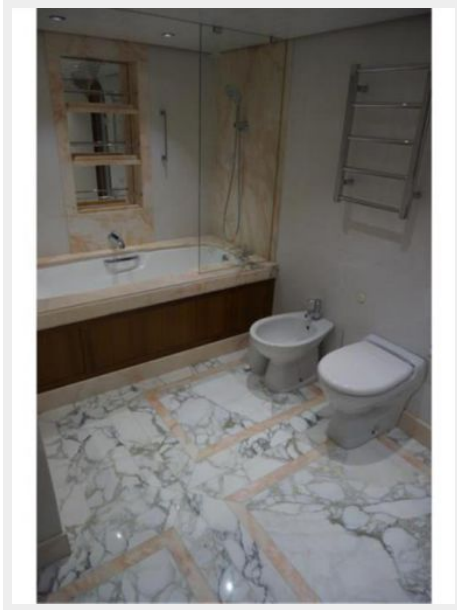


Remodeled master bath.

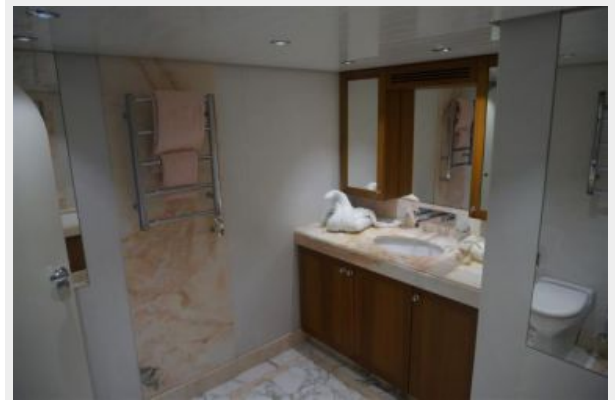
On-deck master suite



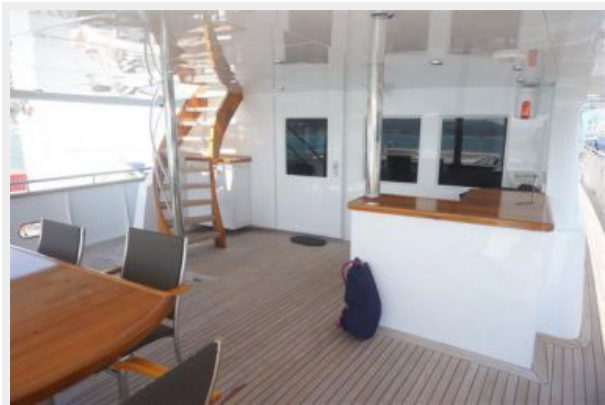
Master head



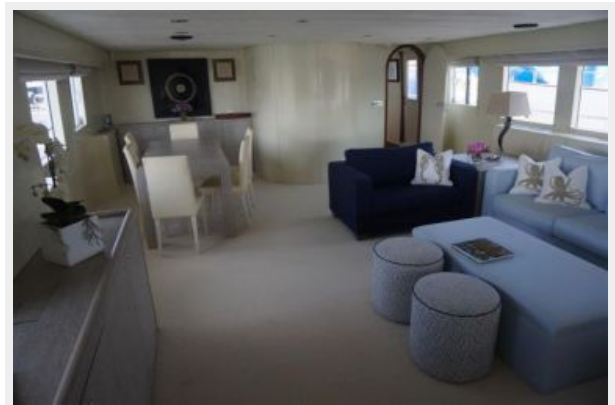
Master head detail



Large covered aft deck with bar



Main salon looking for'd



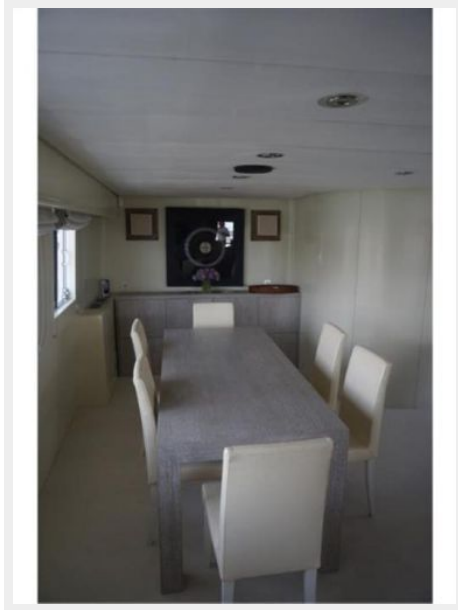
Main salon



Main salon looking aft



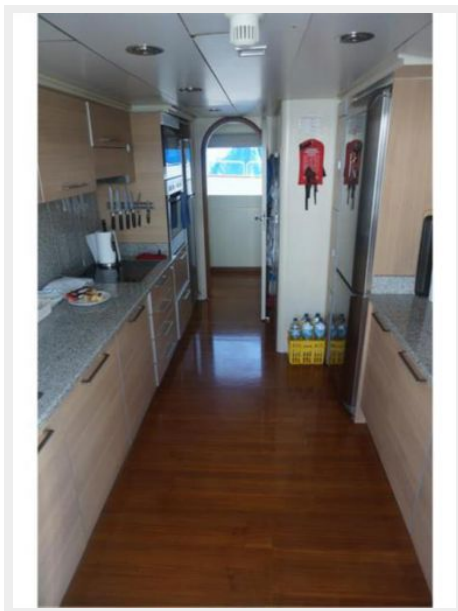
Dining table



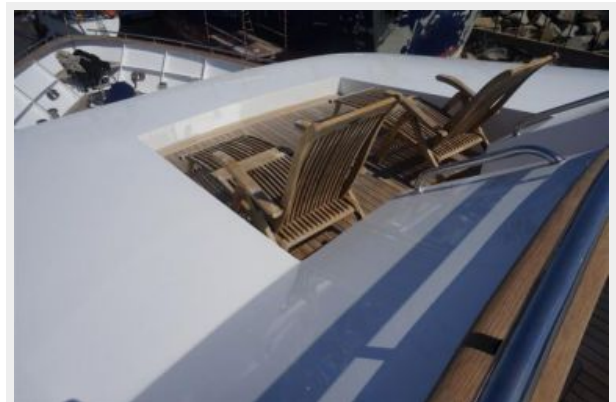
Galley



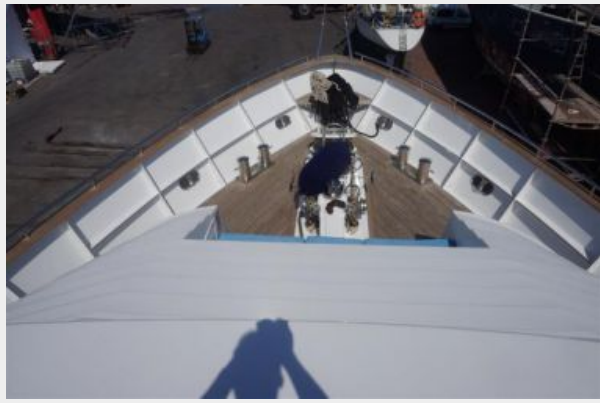
Galley



Lounge area on coach roof



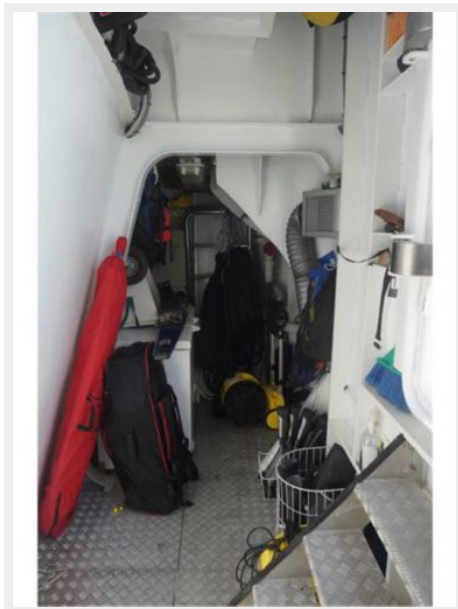
Fore-deck from Portuguese bridge



Fore-deck seating area



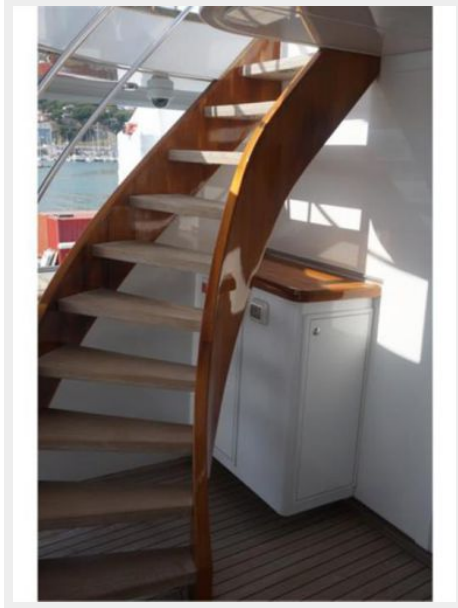
Aft Lazzaretto storage -freezer and washer & dryer



Heavy duty dual anchor handling gear



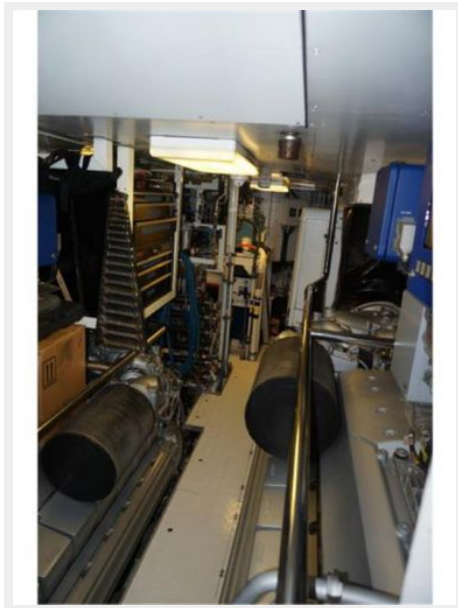
Aft deck stairs leading to boat deck.



Clean and well maintained engine room with plenty of room!



Spacious full walk-around Engine room



Seating area aft of pilothouse



Large boat-deck



Boat deck with access stairs to aft deck.



CONTACTS

Andrey Shestakov, leading yacht broker of the sales department of Shestakov Yacht Sales Inc. Shestakov Yacht Sales Inc., the official representative of the Miami/Fort Lauderdale FL headquarters.

Contact details

Email: andrey@shestakovyachtsales.com

Web: shestakovyachtsales.com/en/

Telephones

USA: +1(954)274-4435

Office hours

Monday – Saturday: **9:00 - 21:00** EDT

Sunday: **closed**

Address



Harbour Towne Marina, 850 NE 3rd St,
STE 213, Dania, FL 33004