

## MERUS — CUSTOM CAROLINA



**Builder:** CUSTOM CAROLINA

**Year Built:** 2010

**Model:** Sport Fisherman

**Price:** PRICE ON APPLICATION

**Location:** United States

**LOA:** 49' 3" (15.01m)

**Beam:** 16' 7" (5.05m)

**Max Draft:** 3' 0" (0.91m)

**Cruise Speed:** 31 Kts. (36 MPH)

**Max Speed:** 36 Kts. (41 MPH)

Our experienced yacht broker, Andrey Shestakov, will help you choose and buy a yacht that best suits your needs **Merus — CUSTOM CAROLINA** from our catalogue. Presently, at Shestakov Yacht Sales Inc., we have a wide variety of yachts available on our sale's list. We also work in close contact with all the big yacht manufacturers from all over the world.

If you would like to buy a yacht **Merus — CUSTOM CAROLINA** or would like help answering any questions concerning purchasing, selling or chartering a yacht, please call **+1(954)274-4435**

# TABLE OF CONTENTS

TABLE OF CONTENTS	2
SPECIFICATIONS	4
Overview	4
Basic Information	4
Dimensions	4
Speed, Capacities and Weight	4
Accommodations	4
Hull and Deck Information	5
Engine Information	5
DETAILED INFORMATION	6
Overview	6
Salon	6
Galley	6
Master Stateroom	7
Forward Stateroom	7
Head	7
Bridge Deck	7
Deck	8
Helm Electronics	8
Tower Helm Electronics	9
Electrical Equipment	9
Cockpit & Mezzanine	9
Engines	10
Engine & Mechanical Equipment	10
Tanks	11
Fishing Equipment	11
SAT & Entertainment Electronics	11
Exclusions	11

---

Exclusions	11
Disclaimer	11
PHOTOS	13
CONTACTS	23
Contact details	23
Telephones	23
Office hours	23
Address	23

---

# SPECIFICATIONS

---

## Overview

---

Owner has a larger, new build 60' on order of this exact same Caison express! Clearly, they love the design, builder and experience. Owner has maintained meticulously and made significant improvements to the boat in the 3 years of ownership. "Clearkote" applied to the tower and outriggers! Don't Wait! This One Will Not Last Long! CRUISE 31 Knots @ 42 GPH (In the Air Conditioning) Powered with C-9 575 CATS.

## Basic Information

---

**Category:** Sport Fisherman

**Model Year:** 2010

**Year Built:** 2010

**Country:** United States

**Fly Bridge:** Yes

## Dimensions

---

**LOA:** 49' 3" (15.01m)

**Beam:** 16' 7" (5.05m)

**Max Draft:** 3' 0" (0.91m)

## Speed, Capacities and Weight

---

**Cruise Speed:** 31 Kts. (36 MPH)

**Max Speed:** 36 Kts. (41 MPH)

**Displacement:** 32000 Pounds

**Water Capacity:** 150 Gallons

**Holding Tank:** 18 Gallons

**Fuel Capacity:** 600 Gallons

## Accommodations

---

**Total Cabins:** 2

**Total Heads:** 1

---

## Hull and Deck Information

---

**Hull Material:** Composite

---

## Engine Information

---

**Engines:** 2

**Manufacturer:** Caterpillar

**Model:** C-9

**Engine Type:** Inboard

**Fuel Type:** Diesel

---

# DETAILED INFORMATION

---

## Overview

---

- Zeus Pod Drive System - engine room is located further aft allowing for a larger interior
- Main stateroom is aft & below helm deck w/split full size berths
- Forward stateroom has criss/cross, upper/lower twin berths
- Mezzanine Seating
- E-PLEX control system

## Salon

---

- High gloss finished cherry wood cabinetry, doors, framing
- Salon sole is cherry & holly strip laminate flooring
- Right side entering salon is a cabinet containing 2nd E-Plex control panel, AC power switching, generator control panel, Eskimo ice remote control and salon MarineAir thermostat
- Samsung 32' flat panel HDTV w/remote control
- Denon AVR 790 AV surround-sound receiver w/remote
- SpeakerCraft speakers flush mounted overhead in headliner
- Direct TV SAT receiver w/remote
- Sony PS3 game console also functions as Blu-ray/DVD/CD player
- Across to portside is large L-shaped settee tailor fitted with leatherette material in a harvest gold color and accented w/striped décor pillows.
- Behind sofa is a wall cabinet above that hinges open to a carpeted rod storage compartment
- Beneath sofa is another carpeted storage area
- Salon is open to forward stateroom

## Galley

---

- Solid Surface Corian Tops - Ebony Mosaic
- Cherry Cabinets
- Teak and Holly Amtico Flooring
- Ample Storage
- Vitrifrigo Drawer Refrigerator
- Vitrifrigo Drawer Freezer
- GE Sensor Microwave Oven SS
- Stainless Steel Sink
- Coffee Maker in the Cabinet
- Raritan hot water heater

- Pressure water system w/Headhunter Mach 5 pump

---

## Master Stateroom

---

- 2 full size berths separated by a nightstand cabinet w/Corian top
- Toshiba 17" flat panel TV mounted on the forward bulkhead
- Direct TV receiver w/remote
- Cherry cabinetry surrounds 3 walls of the master
- The aft compartment is a large locker suitable for additional rod storage
- To either side there are spacious storage areas currently fitted for larger reels & rod butts
- Starboard side forward there is a hanging closet area
- Master sole is cherry & holly laminate
- Matching bedspreads, shams & accent décor pillows

---

## Forward Stateroom

---

Forward stateroom area is open to the salon area - it can be closed off w/a combination pocket door & bi-folding door.

- Wood framed overhead deck hatch provides natural light
- Beneath top berth is a hinged opening rod storage area
- Beneath lower berth is another large carpeted storage area

---

## Head

---

- Corian vanity w/white under mounted sink with brushed nickel faucet
- Large shower stall has a hinged cherry wood & glass door w/handle & tower bar
- Mirrored medicine cabinet above sink
- Fresh water head
- Cherry & holly laminate flooring
- Linen cabinet
- Cleaning supply cabinet below sink
- Moen faucet & shower fixtures
- Exhaust blower in the shower locker

---

## Bridge Deck

---

- 3-sided polycarbonate enclosure
- Eisenglass aft side enclosure
- Non-skid fiberglass deck

- Entire area climate controlled by MarineAir digital thermostat (under helm console)
- Varnished teak helm pod w/bright chrome custom helm wheel & single lever controls
- Port of the pod is the Zeus joystick control
- (2) white ladder-back Pompanette helm & companion chairs w/molded cushions on chrome stanchions
- Helm seat has swing-out footrest
- Helm console has upright electronics box
- Hardtop above has LED lighting
- Straight settee w/Sunbrella upholstered cushions is starboard side
- Beneath settee is large storage area
- Forward of settee is console cabinet w/refrigerated drink box top & tackle drawer storage below
- Portside forward is a raised settee area w/L-shaped seat.
- Beneath deck by forward settee is hatch opening to another storage area
- Beneath settee is large freezer compartment
- Starboard side forward is sliding door to cabin w/tinted windows & quality lockset

## Deck

---

- Foredeck anchor locker w/fresh water washdown spigot
- Fortress FX-23 anchor w/ 50' 3/8" chain & 300' 1/2" nylon rode
- Bomar forward deck opening hatch
- Adult life jackets
- Signal flare kit
- Tuna tower has fiberglass tower standing base w/5 aft arranged spreader lights molded below
- Tower helm has cushioned belly band & seat w/backrest
- Fresh water washdown spigot in tower
- LED running lights in tower hardtop forward corners & center aft
- (6) man Switlik canister life raft mounted in aluminum cradle on aft bridge deck hardtop
- Twin chrome trumpet air horns mounted on hardtop
- Fresh & salt water washdown spigots in cockpit
- (3) 24V Blue transom underwater lights
- White canvas covers for fighting chair & tower helm console
- Bottom sounder transducer is flush mounted in oil bath housing

## Helm Electronics

---

- (2) Two Furuno NavNet 3D units w/12" display
- Furuno RD-30 digital data display (w/sea-temp)
- Furuno GPS/WAAS GP-32 Navigator
- (2) Two ICOM M504 VHF radios



- 64mi range radar w/open array scanner Sirius weather interface
- TracVision KVH m3- Sat TV
- EPLEX touchscreen ships system control panel
- Mercury Start/Stop Switch
- Cummins/Merc Precision Pilot w/Sky Hook dynamic positioning
- Cummins/Merc Zeus automatic/manual trim tabs control panel
- Trim Tabs
- ZF Single Lever Controls
- Sirius weather interface
- GP Link Sat information transmitter w/Caterpillar interface (tacking, com & engine date)
- SmartCraft vessel view digital engine control display
- CAT color marine power display system

---

## Tower Helm Electronics

---

- Furuno NavNet 3D unit w/8" display (networked with all functions of lower helm units)
- ICOM M-504 VHF radio
- Precision Pilot remote panel
- SmartCraft vessel view digital engine display, trim tab controls & Zeus joystick

---

## Electrical Equipment

---

- E-Plex touchscreen electrical system that controls DC & AC power sources aboard. Panels instead of light switches as well as controls dimming
- Glendinning Cable Master
- 50 Amp Cord (Stbd Side)
- Charles Industries shore power booster/transformer
- Northern Lights 16kw Generator
- (8) 12V batteries
- Newmar Phase Three 24V, 45amp battery charger
- Vanner VannGuard power management system/battery equalizer - 60amp
- Newmar 24V to12V converter
- LED rope lighting under cockpit gunwales
- 12V lighter plug at helm

---

## Cockpit & Mezzanine

---

This is a great cockpit with raised Mezzanine seating.

- Teak Cover Boards
- Teak Mezzanine Deck

- Mezzanine Seating
- Engine room access
- Pomanette Fighting Chair w (4) rod rocket launcher/tray-back mounted on 4" chrome stanchion
- (6) Gunwale Rod Holders
- (2) Pioneer Speakers
- Transom fish box
- Transom door to starboard side
- Portside under mezzanine seating is a large crushed ice well supplied by a 600lb/day Eskimo machine
- Large insulated locker beneath teak deck
- Engine room access w/aluminum ladder beneath center seat of mezzanine
- Lower tier opening box is an insulate storage locker
- Behind mezzanine seat backrest, starboard side, is a shelved storage compartment
- Below & beneath the seat & deck are insulated compartments

## Engines

---

This Custom Carolina boat is powered with Twin CAT C9 575hp diesels which is the perfect fit for performance and economy. This boat was well thought out and has everything you need.

- Twin CAT C9 575hp diesels
- ZF Gears with trolling valves
- Total Horse Power: 1150hp
- Cruising Speed: 31 @ 42 GPH (Captains Log)
- Max Speed: 36

## Engine & Mechanical Equipment

---

CAT C9 ACERT ENGINES WITH ZEUS® POD DRIVE SYSTEM: WHERE POWER MEETS MANEUVERABILITY.

- Twin CAT C-9 575HP
- ZEUS POD Drive System
- Northern Lights 16w Generator
- Eskimo Ice Machine
- Water Maker Model - NEW 2013
- Delta T Air System
- Head Hunter Salt water Wash down Pump
- SeaLand MasterFlush Head
- GP Link Sat Information System
- (2) Zeus Pod Joy Sticks for Steering (one in the tower).

---

## Tanks

---

- Fuel Tank: 600 Gallons
- Fresh Water: 150 Gallons
- Holding Tank: 12 Gallons

---

## Fishing Equipment

---

- (2) 24V Miya Epoch US-6 teaser reels
- RUPP triple spreader outriggers w/auto-lok hold-in arms
- Rupp center rigger
- Rigger halyards threaded thru coverboard to a jam cleat below
- LeRay custom tuna tower w/hardtop over bridge deck & hardtop over tower station with tri-color lights
- (2) DC reel outlets under gunwales
- Ice Dump at Mezzanine

---

## SAT & Entertainment Electronics

---

- KVH M3 SAT TV dome antenna mounted on buggy hardtop
- KVH FB150 SAT tracphone w/handset at bridge deck helm
- ACR Global Fix GPIRB #4475 mounted on hardtop w/hydrostatic release
- Fusion MS-IP 500 AM/FM/Sirius SAT radio/iPod docking stereo
- Sony 600 amp amplifier & Pioneer speakers (4 on helm deck, 2 under cockpit gunwale)
- Fusion remote control unit in tower w/speakers
- Clean Galley area has flush flat panel TV or Video from Salon can be displayed with audio on NavNet screen TV

---

## Exclusions

---

- Owners personal items

---

## Exclusions

---

Owner's personal belongings.

---

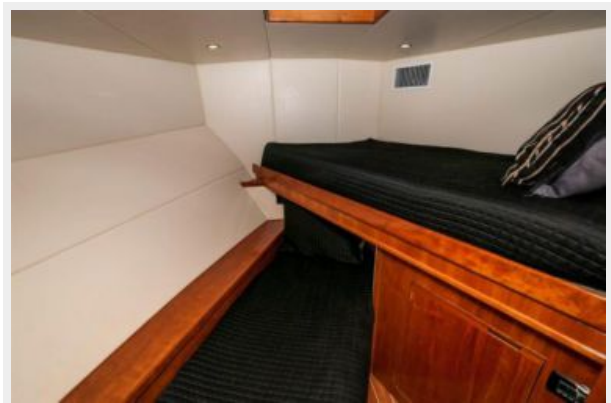
## Disclaimer

---

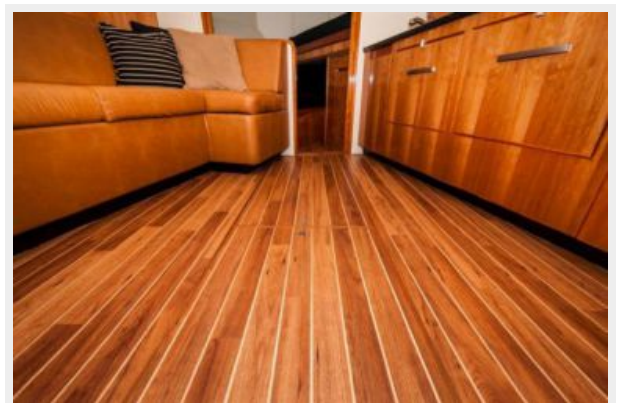
The Company offers the details of this vessel or yacht in good faith but cannot guarantee or warrant the accuracy of this information nor warrant the condition of the vessel. A buyer should

instruct his representatives, agents, or his surveyors, to investigate such details as the buyer desires validated. This vessel or yacht is offered subject to prior sale, price change, or withdrawal without notice.

# PHOTOS























# CONTACTS

---

Andrey Shestakov, leading yacht broker of the sales department of Shestakov Yacht Sales Inc. Shestakov Yacht Sales Inc., the official representative of the Miami/Fort Lauderdale FL headquarters.

## Contact details

---

Email: [andrey@shestakovyachtsales.com](mailto:andrey@shestakovyachtsales.com)

Web: [shestakovyachtsales.com/en/](http://shestakovyachtsales.com/en/)

## Telephones

---

USA: +1(954)274-4435

## Office hours

---

Monday – Saturday: **9:00 - 21:00** EDT

Sunday: **closed**

## Address

---



Harbour Towne Marina, 850 NE 3rd St,  
STE 213, Dania, FL 33004