

ORONERO — RIZZARDI



Builder: RIZZARDI

Year Built: 2003

Model: Motor Yacht

Price: PRICE ON APPLICATION

Location: Italy

LOA: 62' 7" (19.07m)

Beam: 15' 6" (4.70m)

Min Draft: 4' 4" (1.30m)

Max Draft: 4' 4" (1.30m)

Our experienced yacht broker, Andrey Shestakov, will help you choose and buy a yacht that best suits your needs **Oronero — RIZZARDI** from our catalogue. Presently, at Shestakov Yacht Sales Inc., we have a wide variety of yachts available on our sale's list. We also work in close contact with all the big yacht manufacturers from all over the world.

If you would like to buy a yacht **Oronero — RIZZARDI** or would like help answering any questions concerning purchasing, selling or chartering a yacht, please call **+1(954)274-4435**

TABLE OF CONTENTS

TABLE OF CONTENTS	2
SPECIFICATIONS	3
Overview	3
Basic Information	5
Dimensions	5
Speed, Capacities and Weight	6
Accommodations	6
Hull and Deck Information	6
Engine Information	6
PHOTOS	7
CONTACTS	14
Contact details	14
Telephones	14
Office hours	14
Address	14

SPECIFICATIONS

Overview

4 cabins - the perfect charter boat

VAT NOT PAID

Needs cleanings and polishings

SPECIFICATION

Length:	19,07 mt
Beam:	4,70 mt
Draft:	1,30 mt
Hull Material:	Fiberglass
Fuel Capacity:	1800 lt
Water Capacity:	300 lt
Flag:	ITALY
Location:	TYRRENIAN SEA
Year:	2003

LAYOUT

Cabins:	4
Berth:	8
Toilet:	3

ENGINE

Brand:	MTU
Model:	12V 183TE 92
Power:	2 X 1050 HP
Engine hours:	430
Trasmission:	SHAFT DRIVE
Fuel:	Diesel

ELETRIC

12V - 220V - Air Conditioning CONDARIA - Heating system - Generator 11,5 Kw
Mase

EQUIPMENT

GPS/Plotter GEONAV - Autopilot SIMRAD - Radar FURUNO - VHF SHIPMATE

ACCESSORIES

Bow thruster - Cockpit covering - Bow sun cushion - Cushions - Oven - DVD - Sat tv system - TV n° 3 - Stern mooring winch - Gangway - Leather sofa - Waste holding tank - Battery charger - Fridge in cockpit - Grill in cockpit - Water heater - Teak platform - Teak cockpit - Bronze hull - Silver laquer interiors - Up/down TV in cockpit.

Basic Information

Category: Motor Yacht

Model Year: 2003

Year Built: 2003

Country: Italy

Dimensions

LOA: 62' 7" (19.07m)

Beam: 15' 6" (4.70m)

Min Draft: 4' 4" (1.30m)

Max Draft: 4' 4" (1.30m)

Speed, Capacities and Weight

Water Capacity: 79.2516156 Gallons

Fuel Capacity: 475.5096936 Gallons

Accommodations

Total Cabins: 4

Total Berths: 8

Total Heads: 3

Hull and Deck Information

Hull Material: Fiberglass

Engine Information

Engines: 2

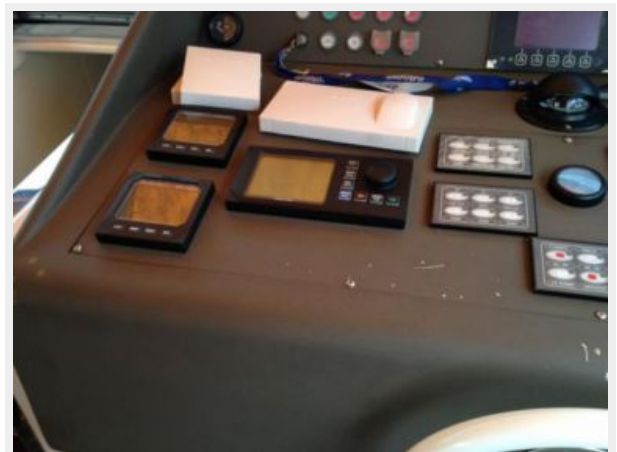
Manufacturer: MTU

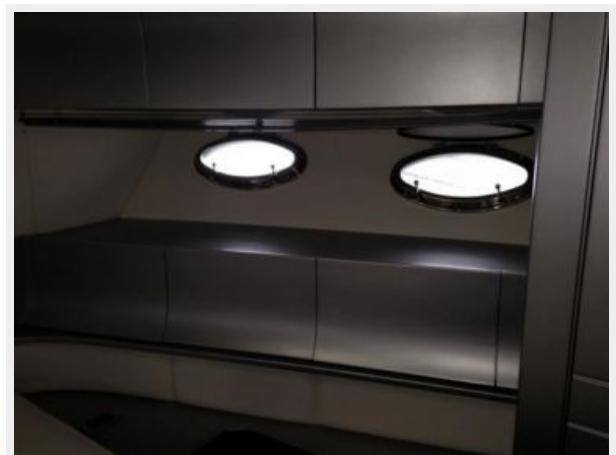
Model: 12V 183TE 92

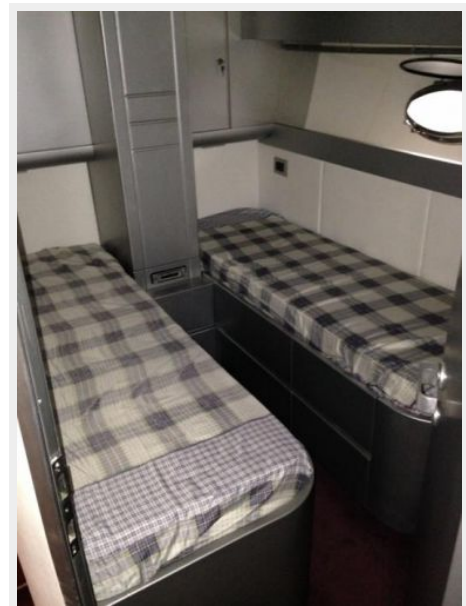
Engine Type: Inboard

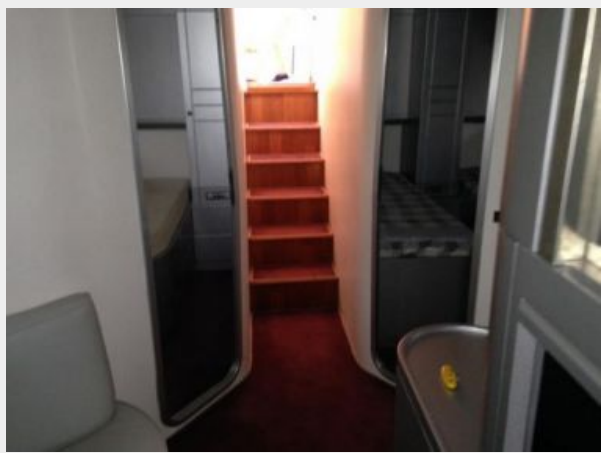
Fuel Type: Diesel

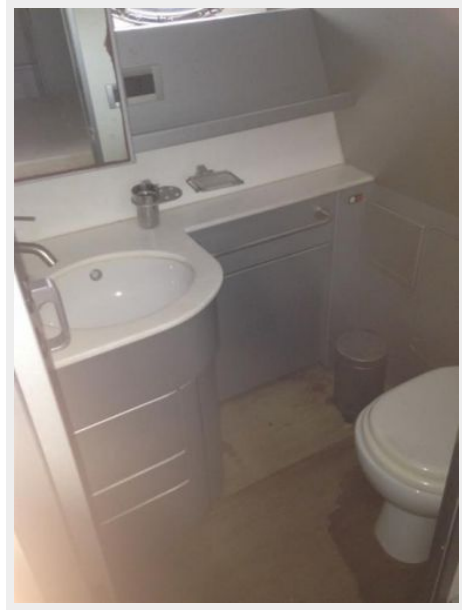
PHOTOS















CONTACTS

Andrey Shestakov, leading yacht broker of the sales department of Shestakov Yacht Sales Inc. Shestakov Yacht Sales Inc., the official representative of the Miami/Fort Lauderdale FL headquarters.

Contact details

Email: **andrey@shestakovyachtsales.com**

Web: shestakovyachtsales.com/en/

Telephones

USA: +1(954)274-4435

Office hours

Monday – Saturday: **9:00 - 21:00** EDT

Sunday: **closed**

Address



Harbour Towne Marina, 850 NE 3rd St,
STE 213, Dania, FL 33004