

## CELESTIAL — ISLAND PACKET YACHTS



**Судостроитель:**  
ISLAND PACKET YACHTS

**Год постройки:** 1988

**Модель:** Крейсерская яхта

**Цена:** **ЦЕНА ЯХТЫ ПО ЗАПРОСУ**

**Местонахождение:** United States

**Длина общая:** 27' 0" (8.23m)

**Ширина:** 10' 6" (3.20m)

**Макс. осадка:** 3' 8" (1.12m)

Купить Celestial — ISLAND PACKET YACHTS а также выбрать подходящую вам яхту из нашего каталога яхт вам поможет опытный яхтенный брокер Андрей Шестаков. На сегодняшний день компания Shestakov Yacht Sales Inc. имеет большое количество яхт в собственном списке продаж, а также тесно сотрудничает со всеми крупными яхтенными производителями по всему миру.

Для того чтобы купить яхту Celestial — ISLAND PACKET YACHTS а также проконсультироваться по любому вопросу связанному с покупкой, продажей, чартером яхт позвоните по телефону **+7(918)465-66-44**.

# ОГЛАВЛЕНИЕ

---

ОГЛАВЛЕНИЕ	2
ХАРАКТЕРИСТИКИ	3
Обзор	3
Основная информация	5
Размеры	5
Скорость, вместимость и масса	6
Размещение	6
Корпус и палуба	6
Информация о двигателе	6
ФОТОГРАФИИ	7
КОНТАКТЫ	23
Контактная информация	23
Телефоны	23
Время работы	23
Адрес	23

# ХАРАКТЕРИСТИКИ

## Обзор

*This Island Packet is **A big well built Cruising Sailboat** that is designed to take you anywhere. With a cruising speed of **6 kts. under power** her **18 hp. Yanmar diesel sips 1/2 gal. of fuel per hour. Celestial is Cutter rigged with her two foresails and main in very good condition.** the quality and ruggedness of these Island Packets are second to none. **Celestial has new Isinglass** installed in **Sunbrella canvas** which is in excellent condition. For those looking for a larger Sailboat, **take a look at Celestial first.** She just might surprise you.*

**Specs** Keel: Full **Dimensions** LOA: 30 ft 0 in Beam: 10 ft 6 in LWL: 24 ft 3 in Maximum Draft: 3 ft 8 in Displacement: 8000 lbs Ballast: 3000 lbs Bridge Clearance: 38 ft 6 in Headroom: 6 ft 2 in **Engines** Engine 1: Engine Brand: Yanmar Year Built: 1988 Engine Model: 2GM 20F Engine Type: Inboard Engine/Fuel Type: Diesel Engine Hours: 1288 Propeller: 3 blade propeller Drive Type: Direct Drive Engine Power: 18 HP **Tanks** Fresh Water Tanks: 1 (31 Gallons) Fuel Tanks: 1 (19 Gallons) Holding Tanks: 1 (12 Gallons) **Accommodations** Number of double berths: 2 Number of cabins: 2 Number of heads: 1 **Electronics** Log-speedometer - Datamarine VHF - Uniden Autopilot Radio - JVC KDG 310 Compass - Gemini Depthsounder - Datamarine TV set - 10 Plotter - Garmin CD player - JVC KDG 310 **Sails** Genoa - Esprit in Good Condition Fully battened mainsail - Good Condition Furling genoa - Good Condition **Rigging** Steering wheel - Rack and Pinion **Inside Equipment** Battery charger - Iota 30 amp Hot water Electric head - Lectra San Deep freezer - Isotherm Microwave oven - Rival Electric bilge pump - Rule Refrigerator - Isotherm Air conditioning - 16000 BTU Reverse Cycle Marine head - Jabsco Electric Manual bilge pump - Located in the cockpit **Electrical Equipment** Shore power inlet Electrical Circuit: 110V **Outside Equipment/Extras** Solar panel - 65 watt (2012) Tender - Custom Hard Shell Davits - New Stainless Dinghy Davits (2012) Cockpit table Cockpit shower - Hand Held **Covers** Lazy bag - Stack Pack Genoa cover Lazyjacks Bimini Top - New Isinglass Excellent Canvas

## Island Packet IP27

### Brokers Impressions

*Celestial gives one the impression of a much larger vessel than her 27' listed length would suggest. She is indeed a very sturdy and capable vessel lending to a feeling of confidence in her design. Although not a racing design, Celestial exhibits the traits of a comfortable long range cruiser. Quality fixtures are used throughout including stainless port lights. In consideration of excellent maintenance and what the replacement value of a vessel like Celestial would be today, It is felt that she is an excellent value.*

**Note: Dinghy is Negotiable**

### Walk Through

*Upon stepping aboard Celestial, very little heeling was noticed. Decks are easy to navigate*

although the use of a jack line would be recommended in brisk conditions. Going forward one is not hampered by the rigging and the Bow Pulpit is large and of high quality with sturdy stainless railings. The life lines are secure and serviceable. The Cockpit is roomy with a teak seat at the helm position. Here is ample stowage for fenders lines etc. in the seats on either side. A large deck hatch reveals Celestial's 18 h.p. Yanmar main engine along with fuel filter, water service, sea strainer and ship service equipment in general all with good access. The engineering space can also be accessed behind the companionway ladder in the Salon. Aft of the helm position and outboard is located a large Stainless Dinghy davit with Solar Panel mounted atop. Entire structure is very robust. The companionway hatch is of high quality being finished in teak that has been well kept. Entering the Salon her galley is "L" shaped and contains a stainless sink, cold plate refrigerator/freezer and a two burner alcohol stove. A Microwave oven is located behind the cook top. To starboard is a settee with an aft berth tucked back and behind this. This berth can accommodate two adults. The dining table folds up onto the forward bulkhead of the Salon when not in use. To port and forward of the galley is another settee with the head being located across to starboard. Here is a Jabsco Electric head that uses the Lectra San system. There is a "y" gate to direct to holding or discharge. A stainless sink is also located here with a hand held shower as the spigot, which can be mounted as a shower. On forward is a roomy "V" berth that is ample for two with the chain locker at the peak. There is ample storage throughout the vessel and under the Teak and Holly sole in the Salon.

### **Owner Supplied Features**

**\* Batteries: 3 group 27 (2015) 1 group 24 tested good (2015 \* New Isinglass in Dodger (2015) \* New Racor fuel filter (2015) \* New bottom paint (2013) \* Bright Work refinished (2013 \* New Solar Panel with MPPT controller (2012) \* New Dinghy davits (2012) \* 16,000 BTU reverse cycle air conditioning/heat \* Peekaboo blinds installed on all Port lights \* Custom hinged companionway doors with etched IP logo \* 12 VDC Isotherm refrigeration \* Origo two burner alcohol stove \* Pressurized on demand hot and cold water**

### **Engine**

**\* Yanmar 18 h.p. diesel engine 2GM 20F with 1288 hrs. estimated. \* Vetus single lever shift/throttle control \* New Cutlass bearing (2011) \* Racor fuel filter \* Bronze sea strainer**

### **Ground Tackle**

**\* One 20# Bruce anchor with 30' Chain and 120' Rode \* One 35# CQR anchor with 15' Chain and 130' Rode**

### **Electronics**

**\* Depth: Datamarine\* Speed Log: Datamarine \* VHF Transceiver: Uniden Polaris \* AM/FM CD Stereo and Speakers JVC Model KD-G 310 \* WiFi Range Extender Antenna \* Wireless LAN Router \* 10" Curtis Flat Screen TV \* Glomax Television Antenna**

### Electrical Systems

*\* Link Lite Battery Monitor \* 65 watt Solar Panel Mounted Atop Dinghy Davits \* Blue Sky MPPT Solar Controller \* Xantrex Echo Charger \* Lota 30 amp Battery Charger \* 3 Group 27 House Batteries, 300 AH (NEW 2015) \* 1 Group 24 Start Battery, Tested Good (2015) \* A/C 16,000 BTU, Marine Air VCP 16K \* Marine Alternator \* Galvanic Isolator \* LED Anchor Light*

### Sails

*\* Cutter Rigged sail configuration, all in Excellent Condition \* Harken Roller Furling Jib \* Hank on Staysail in Good Condition \* Mainsail in Very Good Condition With New Telltales and Slide \* Stack Pack For Mainsail*

### Deck Equipment

*\* Stainless Dinghy Davits, New (2012) \* Heavy Duty Rack and Pinion Steering \* Two Sets of Cockpit Cushions \* Dodger and Bimini with New Isinglass (2015) \* Teak Refinished (2013) \* Dinghy: Custom Mahogany Trim with Bronze Oar Locks \* Dinghy: Finished With Awlgrip Polyurethane \* Dinghy is negotiable!*

### Head

*\* Jabsco Electric \* Lectra San Waste Treatment MSD \* "Y" Valve to Divert to Holding for No Discharge Zones \* Shower Sump 12 VDC \* Hot and Cold On Demand Running Water*

## Основная информация

Тип судна: Крейсерская яхта

Модельный год: 1988

Год постройки: 1988

Страна: United States

## Размеры

Длина общая: 27' 0" (8.23m)

Длина по ватерлинии: 24' 3" (7.39m)

Ширина: 10' 6" (3.20m)

Макс. осадка: 3' 8" (1.12m)

Трапы: 38' 6" (11.73m)

---

## Скорость, вместимость и масса

---

Водоизмещение: 8000 Pounds

---

## Размещение

---

Всего кают: 2

Всего коек: 2

Всего ком. состава: 1

---

## Корпус и палуба

---

Материал корпуса: Fiberglass

---

## Информация о двигателе

---

Двигатели: 1

Производитель: Yanmar

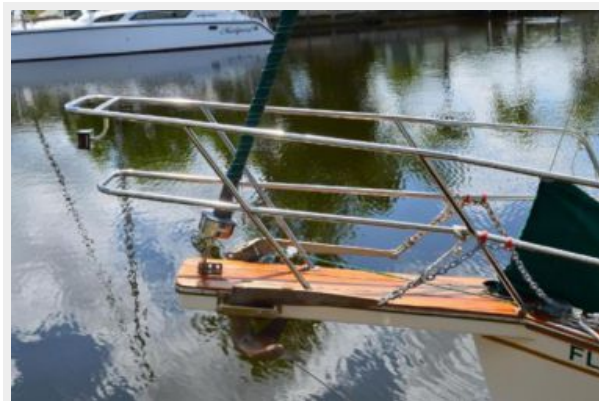
Модель: 2GM 20F

Тип двигателя: Inboard

Тип топлива: Diesel

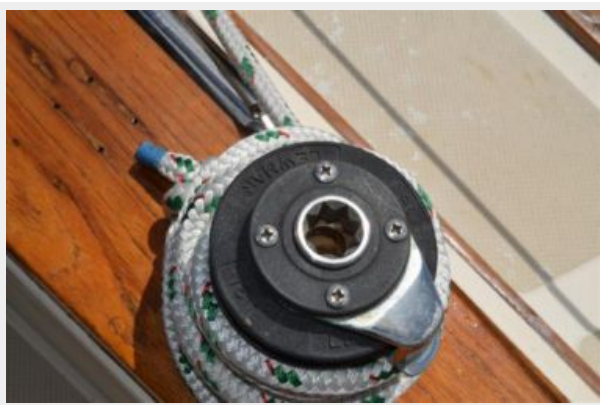
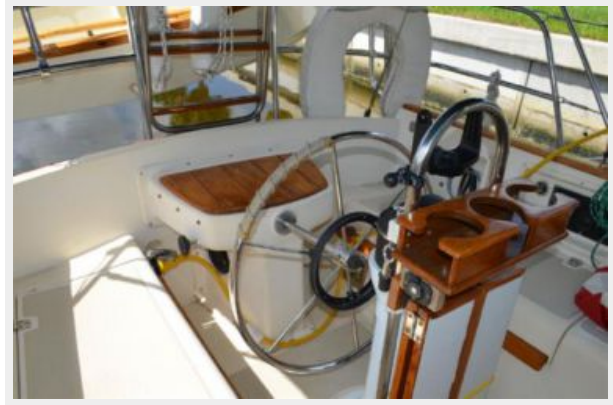


# ФОТОГРАФИИ





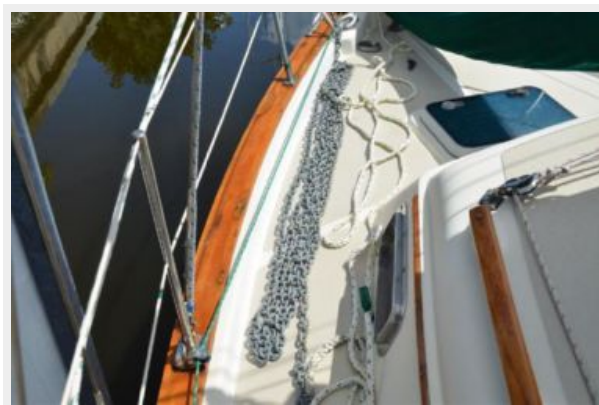








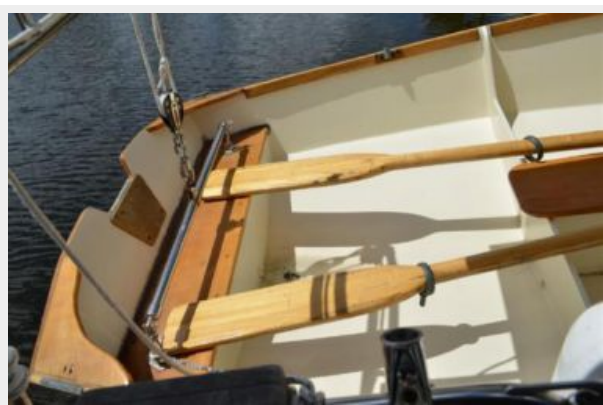


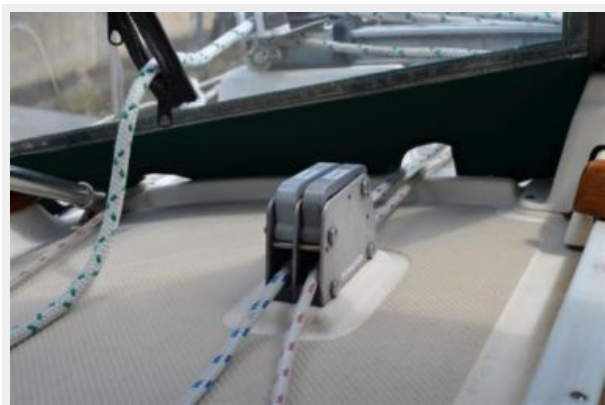
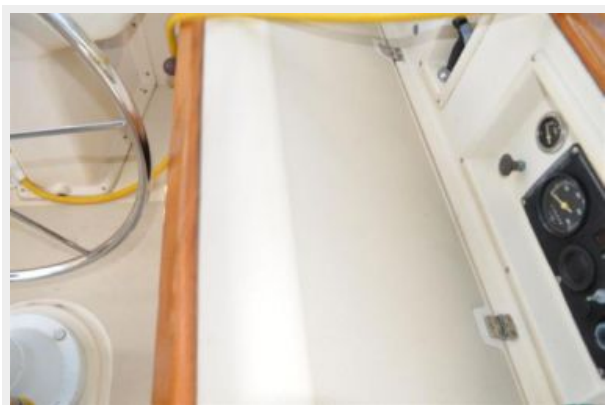












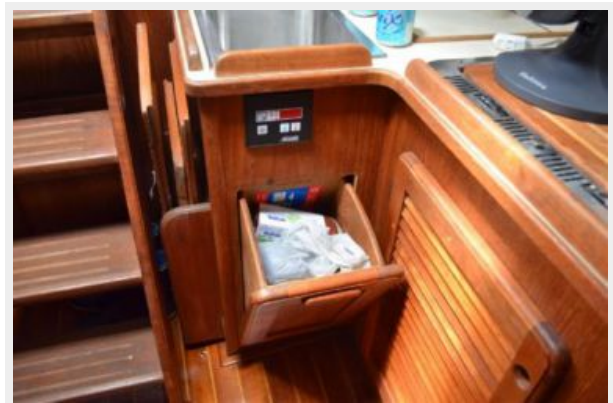


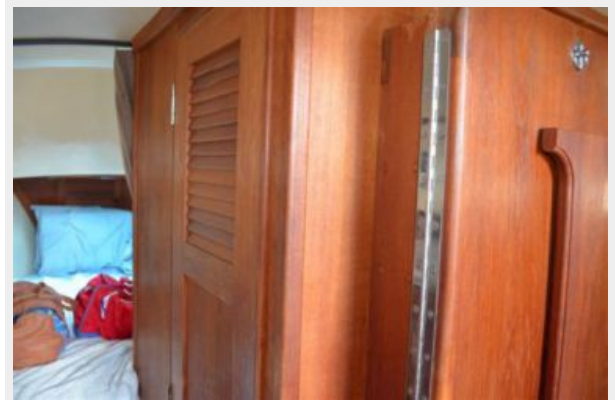






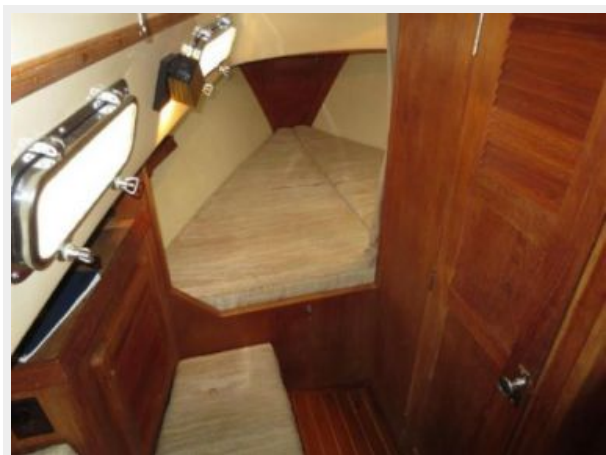












# КОНТАКТЫ

---

Андрей Шестаков (Andrey Shestakov) – ведущий яхтенный брокер отдела продаж яхт и судов компании Shestakov Yacht Sales Inc. Официальный представитель Shestakov Yacht Sales Inc. для русскоговорящих клиентов в центральном офисе компании в Майами/Форт Лодердейл/Флорида/США.

## Контактная информация

---

Email: [andrey@shestakovyachtsales.com](mailto:andrey@shestakovyachtsales.com)

Web: [shestakovyachtsales.com](http://shestakovyachtsales.com)

## Телефоны

---

Краснодарский край: **+7(918)465-66-44**

США, Майами, Флорида: **+1(954)274-4435**

## Время работы

---

Понедельник – Суббота: **9:00 - 21:00**  
EDT

Воскресенье: **Закрито**

## Адрес

---



Harbour Towne Marina, 850 NE 3rd St,  
STE 213, Dania, FL 33004