

MOON SONG — ALASKAN



Судостроитель: ALASKAN

Год постройки: 2007

Модель: Моторная яхта

Цена: **ЦЕНА ЯХТЫ ПО ЗАПРОСУ**

Местонахождение: United States

Длина общая: 65' 0" (19.81m)

Ширина: 17' 4" (5.28m)

Мин. осадка: 4' 6" (1.37m)

Крейс. скорость: 11 Kts. (13 MPH)

Макс. скорость: 16 Kts. (18 MPH)

Купить **Moon Song — ALASKAN** а также выбрать подходящую вам яхту из нашего каталога яхт вам поможет опытный яхтенный брокер Андрей Шестаков. На сегодняшний день компания **Shestakov Yacht Sales Inc.** имеет большое количество яхт в собственном списке продаж, а также тесно сотрудничает со всеми крупными яхтенными производителями по всему миру.

Для того чтобы купить яхту **Moon Song — ALASKAN** а также проконсультироваться по любому вопросу связанному с покупкой, продажей, чартером яхт позвоните по телефону **+7(918)465-66-44**.

ОГЛАВЛЕНИЕ

ОГЛАВЛЕНИЕ	2
ХАРАКТЕРИСТИКИ	4
Обзор	4
Основная информация	4
Размеры	4
Скорость, вместимость и масса	4
Размещение	4
Корпус и палуба	4
Информация о двигателе	5
ПОДРОБНОЕ ОПИСАНИЕ	6
Pilothouse	6
Electronics & Navigation	6
Engines & Mechanical	7
Engine Room & Lazarette	8
Electrical System	8
Deck & Hull	8
Salon	9
Galley	10
Master Stateroom	10
Forward VIP Stateroom	11
Midship VIP Stateroom	11
Exclusions	11
Disclaimer	11
Исключения	11
Отказ от ответственности	11
ФОТОГРАФИИ	13
КОНТАКТЫ	24
Контактная информация	24

Телефоны	24
Время работы	24
Адрес	24

ХАРАКТЕРИСТИКИ

Обзор

Stunning three stateroom flush deck with custom layout and extended swim step. More interior room than any boat in its class. Meticulously maintained by knowledgeable owner. Ready to cruise! Alaska veteran. Many upgrades, owners are moving up. Call today for an excellent opportunity on this Alaskan.

Основная информация

Тип судна: Моторная яхта

Модельный год: 2007

Год постройки: 2007

Страна: United States

Размеры

Длина общая: 65' 0" (19.81m)

Ширина: 17' 4" (5.28m)

Мин. осадка: 4' 6" (1.37m)

Скорость, вместимость и масса

Крейс. скорость: 11 Kts. (13 MPH)

Макс. скорость: 16 Kts. (18 MPH)

Вместимость воды: 300 Gallons

Вместимость сточного бака: 160 Gallons

Объем топливного бака: 1500 Gallons

Размещение

Всего кают: 3

Корпус и палуба

Материал корпуса: Fiberglass

Информация о двигателе

Двигатели: 2

Производитель: Caterpillar

Модель: C9

Тип двигателя: Inboard

Тип топлива: Diesel

ПОДРОБНОЕ ОПИСАНИЕ

Pilothouse

Forward of the open galley is the large pilot house, with teak and alder flooring. Dogging doors to port and starboard provide easy access to the deck, each with Oceanair rollup screens, paneled with matching teak on the inside. In front of the console is a Stidd helm seat covered in synthetic black leather. There is a large destroyer-type stainless and wood steering wheel. The majority of the electronics and navigational equipment are listed below.

Equipment:

- Map light
- Stidd helm chair
- Sidepower bow and stern thruster control
- Glendenning electronic controls and synchronization
- CAT digital readouts for engine status
- Maretron NMEA 2000 DSM250 multifunction color display
- Xantrex inverter control panel
- Sea Recovery water maker, 1400 gallons per day, 240 VAC, with Aquamatic LCD control panel
- Simrad CX54 radar/chart plotter
- Simrad AP25 autopilot control
- Simrad WR20 Bluetooth wireless control
- Simrad RS86F VHF radio
- Simrad AI80 class A AIS control
- Interphase iScan-180 forward scanning sonar
- 1 Dell ship's computer
- Big Bay 15" flat screen computer monitors (two)
- Maxwell anchor control and rode indicator
- Icom IC-M505 VHF radio (secondary)
- Koden MDS-51R closed array radar scanner, connected to ship's computer

Electronics & Navigation

- Garmin 575 backup GPS on bridge
- Cameras on stern and in engine room - 2X each
- Simrad CX54 radar/chart plotter
- CMAP charts (Puget Sound to Alaska)
- Pumps and lights monitor
- Maretron NMEA 2000 network throughout boat, three DSM250 colored displays

DSM250 colored displays (pilot house, flybridge, master stateroom) and following

sensors:

- GPS 200 GPS interface, with WAAS
- WSO100 weather station
- J2K200 engine interface (one to each Cat control head)
- DST100 depth sounder
- TLM100 black water tank level sensor
- Offshore fresh water tank level sensor
- HSC100 heading sensor
- USB100 computer interfaces (two)
- Simrad AT-10 interfaces
- Flowscan NMEA2000 flow sensors (two)
- DCM 200 battery monitor system
- DCR 200 relay control system for the Panda gen
- 2 X offshore fuel tank hydrostatic level sensor - one each tank

Simrad AT-10 interface to NMEA 2000

- Simrad backup GPS interface to system
- Simrad AP25 autopilot
- Simrad CX54 chartplotter/radar in pilothouse
- Simrad CX44 chartplotter/radar repeater on flybridge
- Simrad RS86F VHF radio in pilothouse and repeater on flybridge, with foghorn and loudhailer
- ICOM IC-M504 VHF radio
- Seatel 1898S satellite TV antenna
- Interphase iScan-180 forward looking scanning depth sounder
- Danforth constellation compass

Engines & Mechanical

- Twin C 9 Cats, 3350 HP each,
- Underwater exhaust
- Naiad model 254 roll stabilizer with GPS interface controlled activation and 2 Datum controls (flybridge and PH)
- Twin Headhunter Xcaliber 24V fresh water system pumps
- Tides Sureseal dripless shafts - new in 2015
- Reverso oil pump out system (for mains and gens)
- Reverso fuel polishing system
- Charles galvanic isolation system
- Sidepower SP200 TCi 24 VDC bow thruster
- Sidepower SP200 TCi 24 VDC stern thruster
- 20 gallon water heater (220 VAC, engine heat, Kabola heat)
- Fireboy fire system monitor

- Kabola B17 four zone diesel hotwater heat-
- Cruiseair four zone reverse heat and air conditioners

Engine Room & Lazarette

The walk-in engine room has ample storage for spare parts and consumables. Access is through a double door from the master stateroom. The lazarette is full beam and is accessed from the swim platform through a step-through hatch on the transom. It is nearly three feet deep and is four feet high.

Electrical System

- 20KW Northern Light Genset with underwater exhaust -(2,500 hours)
- 6.5kw Panda (100 hours) 120v generator in engine room. Installed with Maretron DCM (DC Monitor) and DCR (DC Relay) devices for auto-start and auto-stop. Designed to continually monitor and maintain house batteries.
- Xantrex SW4024 inverter/charger
- 160 amp high capacity alternator
- Two Lifeline AGM 8D gel cell batteries for windlass and bow thruster (stored under forward stateroom bunk)
- Separate battery chargers:

Bow thruster and windlass (24 VDC)

Dolphin (12 VDC) main engine batteries and gen batteries

Dolphin (24 VDC) house bank

- Fireboy clean agent fire suppression system - certified in 2015.
- Gen sep generator exhaust muffler system
- Underwater side exhausts for main engines
- Two 8D Lifeline AGM gel starter batteries for each main engine (12 VDC)
- One starter batteries for each generator (12 VDC)
- Six 8D Lifeline gel batteries for house bank (24 VDC, 1500 amp hours)
- Glendenning 50 amp shore cord reel retraction system
- 50 and 30 amp shore power connections on stern and forward deck
- Ship can run on 30 amp shorepower, no dishwasher, A/C, or water heater

Added NAIAD control panel in flybridge

Added color cameras with display in flybridge (2 on swim step, 2 in engine room)

Deck & Hull

- All non skid surfaces repainted in 2014 (walk arounds, bow, fly bridge deck, fly bridge ceiling)
- All lights upgraded to LED inside and outside down lights plus all Navigation lights
- Bulbous bow added in 2013, increased stability and fuel economy.
- 40" swim step extension completed in 2013. Includes storage under swim platform
- Maxwell 24V windlass Rebuilt 2015.
- S/S anchor/roller
- Aritex 132 lb S/S Delta-style anchor with 350 ft of 1/2 inch chain
- 6 white and blue underwater LED lights
- Lazerette accessed from walk-in hatch on swim platform with custom shelf over steering gear and stowage racks for fenders and dock lines.
- Glendenning remote control for engines and thrusters with 20' cable and remote control plugs on aft deck and forward deck
- Custom plexiglas wing doors
- Full canvas on aft deck and flybridge, with matching Sunbrella dinghy cover, BBQ cover, and forward deck seat cover as well as all cap rails
- Fenderhook leather and fleece fender holders (8 pieces)
- Teak decking on aft deck, stairs, swim platform, and flybridge
- Solar screen for pilothouse
- Spare Fortress FX37 with 20' chain and 100 feet rode
- Freshwater washdown on bow and aft decks and in engine room
- Salt water wash down on swim platform
- LED courtesy lights on all steps inside and out
- Hot and cold shower wand on swim platform
- Custom extended swim platform with removable "staples" and integrated swim ladder
- Stainless steel grab handles port and starboard
- Glendenning retractable shore cord aft
- Custom rear awning to provide shade on upper flybridge deck
- Safety rails around the entire boat deck
- Lynx 2 burner built in propane barbecue on flybridge deck, new 2014 with 3 tank storage

Salon

To starboard is a custom cabinet holding a Sony 40 HDTV on a custom lift. Ample storage in front of the lift. IN front of the staircase to the master is a pantry with large slide out drawers including AV equipment. Onkyo receiver, 6 zone speaker control for setting separate sound levels in the salon, PH, aft deck, flybridge and master state room

To port is a custom L shaped settee covered in micro leather fabric with sewn in baseball stitching. In front of the settee is a large (30 x 30) upholstered ottoman with storage

Forward in the salon is a custom glass top dining table with 4 chairs. Serving the dining area is a full size forward cabinet with glass doors and plentiful storage.

There is a day head just forward of the salon to starboard.

Galley

Galley Forward of Salon in "Country Kitchen" Design

The galley and pilot house are combined in a large open and bright area, separated by a granite worktop 3.75 feet wide and 7 feet deep. In the pilot house side of the worktop are three stools which can be used for working and eating on the worktop or turned forward to view the pilot house console and windows.

The galley has granite counter tops and GE and Subzero appliances. The stove is a five burner propane cooktop (new in 2014), supplied by three tanks located on the boat deck. Below the cooktop is a Subzero fridge/freezer drawer combination, with ice maker. An additional Subzero undercounter pair of refrigerator drawers and another set of fridge/freezer drawers is under the worktop on the starboard side. Forward of the dayhead and to the starboard of the galley area is a double pantry with deep slide-out drawers for provisions. Above the cooktop is a GE microwave/convection oven. A large S/S sink is on the port side, with a GE garbage disposal in the prep sink. A GE trash compactor and a full-sized GE dishwasher are located under the granite worktop. Large pull-out rolling appliance centers are located on either side of the galley entrance. The sole is teak and alder.

- Granite countertops
- GE microwave - convection oven
- five burner propane cooktop new in 2014
- 3 sets of subzero drawer type refrigeration.2 fridge freezer - 1 fridge fridge
- Double pantry with slide out drawers
- GE trash compactor
- GE garbage disposal
- GE dishwasher
- Large roll out drawers for counter top appliance storage
- Teak and alder sole

Master Stateroom

Access to master stateroom is down the stairs in the salon. It has teak and camphor burl counter tops with raised teak bull nose, teak and alder flooring, and roman shades. A custom Manship escape hatch through the bulkhead into the aft lazarette provides added light and ventilation. Shoji screens face the cabinets. Teak burl covers the headboard and the bedside end tables. King size bed with a custom mattress from Seattle Mattress. A Maretron multipurpose monitor displays all of the relevant shipboard data captured by the NMEA 2000 network. Twin hanging lockers with cedar lining. The spacious master bath has a marble countertop and sole, Tecmar toilet, and double-width shower with a bench and Grohe thermostat mixing controls. TV and

speaker controls

Forward VIP Stateroom

- Has a centerline queen sized berth, overhead hatch with screen,
- Cedar lined hanging locker
- Private access to head with marble countertops

Midship VIP Stateroom

- Large queen berth
- Cedar lined hanging locker
- Ensuite head and shower
- Tecma toilet
- Large shower with Grohe controls
- ASKO stacked washer and dryer in separate locker

Exclusions

All personal property is excluded unless specifically identified and included in the sale agreement and listing specifications. Personal property refers to all items not permanently attached to the vessel including but not limited to: artwork, furnishings, and recreational or entertainment items. Advertisements, marketing materials, and/or other photography may depict the vessel with personal property, however, such personal property is excluded unless otherwise specifically included as provided herein.

Disclaimer

The Company offers the details of this vessel in good faith but cannot guarantee or warrant the accuracy of this information nor warrant the condition of the vessel. A buyer should instruct his agents, or his surveyors, to investigate such details as the buyer desires validated. This vessel is offered subject to prior sale, price change, or withdrawal without notice.

Исключения

При продаже яхты исключаются личные вещи владельца.

Отказ от ответственности

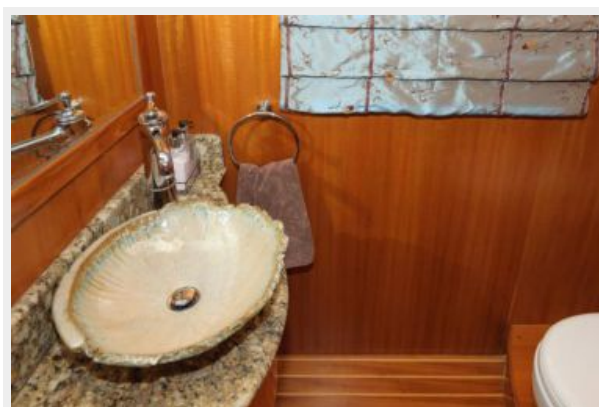
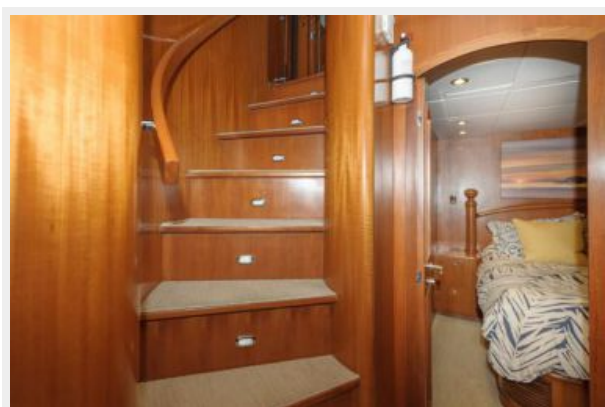
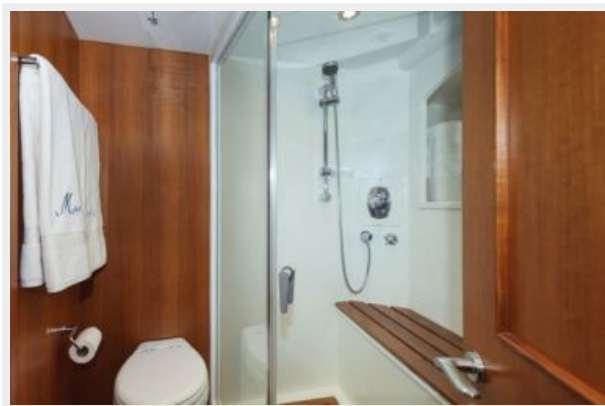
Компания предоставляет описание судна или яхты добросовестно, но не может гарантировать точность этой информации, а также не ручается за техническое состояние. Покупатель должен проинструктировать своих агентов или оценщиков исследовать представленную информацию более подробно, по собственному желанию. Продажа судна или яхты, изменение цены или снятие с продажи будет происходить без предварительного уведомления.

ФОТОГРАФИИ







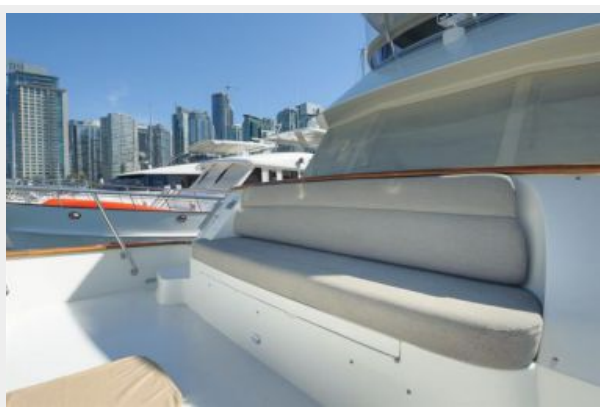


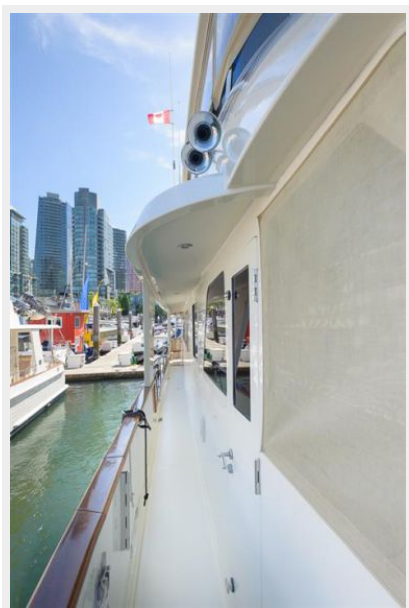














КОНТАКТЫ

Андрей Шестаков (Andrey Shestakov) – ведущий яхтенный брокер отдела продаж яхт и судов компании Shestakov Yacht Sales Inc. Официальный представитель Shestakov Yacht Sales Inc. для русскоговорящих клиентов в центральном офисе компании в Майами/Форт Лодердейл/Флорида/США.

Контактная информация

Email: andrey@shestakovyachtsales.com

Web: shestakovyachtsales.com

Телефоны

Краснодарский край: **+7(918)465-66-44**

США, Майами, Флорида: **+1(954)274-4435**

Время работы

Понедельник – Суббота: **9:00 - 21:00**
EDT

Воскресенье: **Закрито**

Адрес



Harbour Towne Marina, 850 NE 3rd St,
STE 213, Dania, FL 33004