

## POLLY — ALLOY



**Судостроитель:** ALLOY

**Год постройки:** 2007

**Модель:** Моторная яхта

**Цена:** **ЦЕНА ЯХТЫ ПО ЗАПРОСУ**

**Местонахождение:** United States

**Длина общая:** 135' 0" (41.15m)

**Ширина:** 27' 10" (8.48m)

**Макс. осадка:** 6' 2" (1.88m)

**Крейс. скорость:** 12 Kts. (14 MPH)

**Макс. скорость:** 15 Kts. (17 MPH)

Купить Polly — ALLOY а также выбрать подходящую вам яхту из нашего каталога яхт вам поможет опытный яхтенный брокер Андрей Шестаков. На сегодняшний день компания Shestakov Yacht Sales Inc. имеет большое количество яхт в собственном списке продаж, а также тесно сотрудничает со всеми крупными яхтенными производителями по всему миру.

Для того чтобы купить яхту Polly — ALLOY а также проконсультироваться по любому вопросу связанному с покупкой, продажей, чартером яхт позвоните по телефону **+7(918)465-66-44**.

# ОГЛАВЛЕНИЕ

---

ОГЛАВЛЕНИЕ	2
ХАРАКТЕРИСТИКИ	5
Основная информация	5
Размеры	5
Скорость, вместимость и масса	5
Размещение	5
Корпус и палуба	6
Информация о двигателе	6
ПОДРОБНОЕ ОПИСАНИЕ	7
Features	7
Salon	8
Galley	8
Master Stateroom	8
Guest Staterooms	8
Crew Quarters	9
Aft Deck	9
Upper Deck	9
Engine/Mechanical Equipment	10
Electronics/Audio/Visual Equipment	10
Electrical Equipment	14
Safety Equipment	15
Deck Equipment	15
Tenders and Toys	15
Lazarette	16
Exclusions	16
Исключения	16
Отказ от ответственности	16
ФОТОГРАФИИ	17

---

SALON	17
BAR AND SALON	17
SALON	17
GALLEY	17
DINING ROOM	17
MASTER STATEROOM	18
MASTER BATHROOM	18
QUEEN GUEST STATEROOM	18
QUEEN GUEST STATEROOM	18
TWIN GUEST STATEROOM AND PULLMAN	18
TWIN GUEST STATEROOM	18
WHEEL HOUSE	19
SUNDECK HELM	19
SUNDECK DINING	19
SUNDECK BAR	19
SUNDECK DINING AL FRESCO	19
SUNDECK CHAISE LOUNGES	19
AFT DECK DINING	20
BOW SUN PAD	20
ENGINE ROOM	20
AFT DECK SEATING	20
AERIAL	20
ENGINE ROOM	20
AERIAL	21
LAYOUT	21
POLLY AND TOYS	21
КОНТАКТЫ	22
Контактная информация	22
Телефоны	22

---

Время работы	22
Адрес	22

# ХАРАКТЕРИСТИКИ

## Основная информация

Тип судна: Моторная яхта	Модельный год: 2007
Год постройки: 2007	Год обновления: 2013
Страна: United States	Открытая палуба мостика: Да
Кубрик: Да	

## Размеры

Длина общая: 135' 0" (41.15m)	Длина по ватерлинии: 117' 3" (35.74m)
Ширина: 27' 10" (8.48m)	Макс. осадка: 6' 2" (1.88m)

## Скорость, вместимость и масса

Крейс. скорость: 12 Kts. (14 MPH)	Макс. скорость: 15 Kts. (17 MPH)
Дальность на макс. скорости: 4500 Kts.	Водоизмещение: 586000 Pounds
Чистый вес: 293 Pounds	Вместимость воды: 3368 Gallons
Вместимость сточного бака: 356 Gallons	Объем топливного бака: 8825 Gallons

## Размещение

Всего кают: 5	Спальные места: 11
Всего ком. состава: 6	Каюта капитана: Да
Каюты экипажа: 3	Койки экипажа: 7
Спальных мест экипажа: 7	Комм. состав экипажа: 3

## Корпус и палуба

---

**Материал корпуса:** Aluminum

**Материал палубы:** Teak

**Дизайнер экстерьера:** Dubois

**Дизайнер интерьера:** Redman Whiteley  
Dixon

## Информация о двигателе

---

**Двигатели:** 2

**Производитель:** Caterpillar

**Модель:** C30

**Тип топлива:** Diesel

# ПОДРОБНОЕ ОПИСАНИЕ

## Features

The 2007 135' Alloy Motor Yacht, "Polly," is in exceptional condition throughout! "Polly" was originally built for a master yachtsman and the founder of Alloy Yachts, whom after six builds wanted a stylish and modern raised pilothouse. Along came "Polly," an elegant 41 m (135') superyacht that was custom built in 2007 by Alloy Yachts in New Zealand and designed by Dubois Naval Architects. She is built to both Lloyds 100A1 SSC Yacht Mono G6 LMC and MCA LY2 classifications and is up to date with all necessary inspections. She was most recently updated with a refit in 2013.

Complementing her metallic silver superstructure are long black glass windows that stretch uninterrupted along the side of the main deck, accentuating her striking blue hull. A stylish head-turner in ports worldwide, "Polly" is embellished with beautifully finished stainless steel louvres that wrap around the forward superstructure.

The layout of the exterior space offers exciting versatility for on deck enjoyment. Entertain guests on the spacious top deck, or on the expansive shaded aft deck; a favorite for guests alfresco dining. The perfect place to sunbathe onboard is the comfortable sunpad on the bow.

Light and sophisticated, her equally impressive interior was masterfully designed by the highly talented team at Redman Whiteley Dixon. Attention to detail and quality of finish throughout is of the highest standard. "Polly's" clean, contemporary style retains a refined elegance, while her intelligent use of space captures natural light from all sides. Large windows also ensure wonderful views and excellent visibility from the main deck salon. Cream silk carpets provide a soft contrast to the marble surfaces, lacquer and mahogany.

The interior layout affords total privacy and accommodations for up to 11 guests, plus 7 crew. Situated on the main deck with an entry lobby is the beautifully furnished, full-beam owner's suite, complete with his and hers heads. Nothing short of spectacular, the master stateroom includes a walk-in dressing room, a private office, and a comfortable lounge area. Below deck, four spacious ensuite staterooms provide guests with luxurious accommodations.

The well designed engine room is a captain's dream with all systems easily accessible and no space left unused. Powered by twin CAT C30 1550 hp diesel engines, this superyacht is powerful, agile and graceful. With a trans-oceanic range of 4,500 nautical miles and a top speed of 15 knots, "Polly" is well suited for long-range cruising and extended traveling. This yacht is fitted with an advanced stabilization system to create a smoother and more enjoyable cruising experience. Maintained to the highest standards and in first class condition; call today to schedule your showing.

**NOT OFFERED FOR SALE TO U.S. RESIDENTS WHILE IN U.S. WATERS**

---

## Salon

---

• The spacious salon is accessible through aft sliding glass doors • An inviting bar greetings you with three bar stools to port at the main entrance • White marble flooring with cream silk carpets in select areas • The salon features comfortable seating, including two chairs and a large L-shaped sofa • A separate formal dining area for ten is located forward to the salon seating area • To starboard leads to the owner's suite, day head and stairs to the lower deck guest cabins • To port leads to a hostess area and then either up to the pilothouse or down to the galley

---

## Galley

---

- Miele appliances
- (2) Gaggenau convection ovens (2008)
- (2) Jura coffee machines
- (2) Ice makers
- Induction hob (2011)
- Stovetop
- (1) Dishwashers
- Microwave
- (2) Custom refrigerators - interchangeable (Alloy Yachts)
- (1) Large freezers located under galley sole
- Laundry: (2) washers (2) dryers (Miele 2011)

---

## Master Stateroom

---

- The full-beam owner's suite is situated forward on the main deck
- King-size bed and walk around berth
- Includes an entry lobby
- His and hers marble heads
- Walk-in dressing room
- Private office
- A large lounge area with sofa
- Silk carpet
- Entertainment system
- Mood lighting
- Climate control
- Safe

---

## Guest Staterooms

---

- Four staterooms are located on the lower deck



- All guest staterooms have ensuite marble heads, silk carpet, entertainment systems, mood lighting, and climate control
- Two staterooms have large queen-size berths
- Two staterooms have twin berths
- An additional pullman bed is provided in one of the twin-bed cabins

---

## Crew Quarters

---

- Crew accommodations are forward on the lower deck with three cabins, accommodating seven
- Double in captain's cabin with ensuite head
- Safe in Captain's cabin
- Three -berth cabin with en-suite head
- Two-berth cabin with ensuite head
- Crew mess
- (2) Miele washer and dryers are located in a laundry room in the crew mess

---

## Aft Deck

---

- Matching curved stairways from the aft boarding platform lead to the aft deck, providing a dramatic entrance to this magnificent yacht
- Sliding glass doors into the main salon
- Teak laid deck
- Aft deck dining for ten
- Comfortable aft deck sofa with mahogany coffee table
- Retractable electric sunshade
- Custom made hardware and stanchions
- Emergency access to engine room to starboard

---

## Upper Deck

---

- Unique custom designed hardtop accentuating overall sleek look of yacht
- Center aligned bar with (3) bar stools
- (2) Umbrellas
- (3) Luxurious Chaise Lounge Chairs
- Symmetrical port and starboard casual seating with chrome and marble cocktail tables
- AI Fresco dining forward for twelve
- Pop up TV that can be viewed in daylight without glare
- Teak laid deck
- (2) Helm chairs, one on each side of captain's bench seat
- Refrigerator

- Wetbar
- (1) Large six-burner barbecue

## Engine/Mechanical Equipment

---

- ZF transmissions
- Zero speed stabilizers installed (Oct 2014)
- (2) CAT C30 diesel engines 1550 hp Port hours:2824 Stbd hours: 2824 (2/23/16)
- Normal fixed shafts, BT Marine bronze five-bladed propellers
- COMPLETE GENERATOR OVERHAULS INCLUDING BLOCKS (9/1/15)
- (2) CAT 51 kW generators- hours:
- (2) Idromar water makers - 1,189 GPD; 200 gallons/hour
- Tank capacities: Lub oil: 116 gal; Dirty lub oil: 116 gal; Grey water: 370 gal; Black water: 370 gal; Hydraulic fluid: 264 gal
- Air conditioning: Reverse cycle chilled water system - (2) sets of (4) compressors
- Bow and stern thrusters: (2) Trac II 90HP tunnel thrusters
- Naiad 420 with Multisea II control stabilizers
- Westfalia fuel filters
- Westfalia fuel separator
- Yanmar fire/bilge pump
- DVZ oil/water separator
- Wagner/Summer powered assisted steering system
- Hamann waste treatment plant
- Gear Boxes: 2x ZF 1965 reduction 4:1 ratio
- Range: 4,500 nautical miles at 12 knots

## Electronics/Audio/Visual Equipment

---

### Sirius XM Distribution for AV and Weather System Conception

(1) 233-XM-50 XM Satellite Radio Antenna System

3) Audiovox Sirius Connect Home Pro Tuner

(1) SR4 Amplified 4-Way Splitter Kit - Satellite Radio

### Speaker Solution - Front Lounge Area

(2) Speaker Craft High Fidelity In-Ceiling Loudspeaker, each

(3) Sonance Visual Performance Extreme In-Wall Speakers, per pair

(1) JL Audio 7.7-inch (196 mm) Enclosed Tower Coaxial System

(1) Cambridge Audio Powered Subwoofer - for all zone solution

### **Crew Mess AV System**

(2) Samsung 29" Class LED 720p/ 60Hz HDTV =Crew Area and Captain's Cabin

(2) Netgear 8-Port Gigabit Smart Desktop Switch

### **Master Stateroom**

(1) Samsung Region Free 40-inch 1080p Slim Smart LED HDTV

(1) Cambridge Audio Powered Subwoofer 110-240 Volts

(1) Apple 16GB iPad Mini Wi-Fi

(1) Apple TV

1) Apple Airport Express

(1) Yamaha RXA820 Region Free 7-Channel Receiver

(1) DirecTV H24 High Definition Receiver for North America

(1) DirecTV H24 High Definition Receiver for Latin America

(1) Netgear 8-Port Gigabit PoE Smart Switch with 2 Gigabit Fiber Uplink

(1) Audiovox Sirius Connect Home Pro Tuner

(1) RTI XP6 Based Central Processor

### **Guest Staterooms**

(4) Samsung Region Free 32-inch 1080p Slim Smart LED HDTV

(4) Apple 16GB iPad Mini Wi-Fi

(4) Apple TV

(4) Yamaha 5.1 Network AV Receiver 240V

(4) DirecTV H24 High Definition Receiver for North America

(4) DirecTV H24 High Definition Receiver for Latin America

(4) Netgear 8-Port Gigabit PoE Smart Switch with 2 Gigabit Fiber Uplink

(4) RTI XP6 Based Central Processor

### **Flybridge Upper Aft AV System**

- (1) Samsung Region Free 46" Class Slim LED 1080p Smart HDTV
- (1) DirecTV H24 High Definition Receiver for North America
- (1) DirecTV H24 High Definition Receiver for Latin America
- (2) Apple AirPort Express Base Station (One unit for Flybridge/Aft Deck and Pilot House)
- (1) Apple TV
- (1) Yamaha RXA2020RF Region Free 9-Channel Surround Sound Receiver
- (1) Netgear 8-Port Gigabit PoE Smart Switch with 2 Gigabit Fiber Uplink
- (1) RTI XP6 Based Central Processor
- (3) RTI In-Wall Controller with 3.5" LCD Display
- (1) Apple 16GB iPad Mini Wi-Fi

### **Main Salon AV System**

- (1) Samsung Region Free 46" Class Slim LED 1080p Smart HDTV
- (1) Cambridge Audio Powered Subwoofer 110-240 Volts
- (1) DirecTV H24 High Definition Receiver for North America
- (1) DirecTV H24 High Definition Receiver for Latin America
- (2) Apple AirPort Express Base Station
- (1) Apple TV
- (1) Yamaha RXA2020RF Region Free 9-Channel Surround Sound Receiver
- (1) Netgear 8-Port Gigabit PoE Smart Switch with 2 Gigabit Fiber Uplink
- (1) RTI XP8 Advanced System Controller
- (3) RTI In-Wall Controller with 3.5" LCD Display
- (1) Apple 16GB iPad Mini Wi-Fi
- (6) Western Digital 4TB External Hard Drive Storage File Backup and Storage
- (1) Apple Mac Mini 2.5GHz 500GB Hard Drive/2.5GHz dual-core Intel Core i5/ 4GB Ram
- (1) Apple Wireless Keyboard
- (1) Apple Magic Trackpad

---

## Satellite TV System

- (1) KVH HD11 TracVision HD11 w/IP Antenna Control Unit without labels on radome
- (1) KVH TracVision HD11 RF Smart Switch
- (1) KVH TracVision SWM Expansion Kit - 16 Tuners
- (2) DirecTV SWM16 Single Wire Multi-Switch With Power Supply (European and Latin America)
- (2) DirecTV SWM-8 Single Wire Multi-Switch (North America)
- (2) DirecTV H24 High Definition Receiver for North America
- (3) DirecTV H24 High Definition Receiver for Latin America
- (1) RTI AD8 - RTI 8 Source 8 Zone Amped
- (1) RTI XP3 Integrated Central Processor
- (3) RTI XP Based Central Processor
- (2) Yamaha RXS600 Network AV Receive
- (2) Apple TV 2

## Satellite Communications System

- (1) KVH V11 TracPhone V11; Dual-mode C/Ku-band Antenna; rack-mountable CommBox-ACU and Modem
- (7) Netgear ProSafe Dual Band Wireless-N Access Point
- (1) Peplink Balance Load-Balancing Multi-WAN Enterprise Router
- (1) Netgear ProSafe 48-Port Gigabit Smart PoE Switch
- (1) Peplink Pepwave 4G LTE Mobile Router - AT&T Service
- (1) Peplink Pepwave 4G LTE Worldwide Router
- (1) Wilson High-Gain Multi-Band Marine Antenna
- (1) Wilson North America Tri-Band 4G-C Amplifier Only +70dB
- (1) Wilson Signal Booster Universal GSM 900/1200 Europe/Asia
- (1) Wave Wifi Rogue Pro Ultra Small WIFI Access System
- (6) Netgear 8-Port Gigabit PoE Smart Switch with 2 Gigabit Fiber Uplink

(1) Netgear ProSafe Dual Band Wireless-N Access Point for lazarette area

### **Electronic Package**

(1) Yacht Control Wireless Remote Control System for Twin Disk EC300

(2) Furuno TZT14 NavNet TZtouch Multi-Touch 14" Color LCD Display

(1) Furuno GP330B 12VDC GPS Receiver w/ data output NMEA 0183/N2K

(1) Furuno DRS6A Ultra High Definition Digital 4' Open Array Radar

(1) Maretron SSC200 Solid State Compass

(1) Furuno BBWX2 Second-Generation Sirius Satellite Weather Receiver for NavNet TZtouch

(1) Furuno BBDS1 Network Fish Finder for NavNet 3D and NavNet TZtouch

(2) Shakespeare 8900 8' 6dB VHF Antenna

(1) Kramer 4x2 HDMI Matrix Switcher located in Pilot House

(1) Yacht Controller

### **NAV Computer System**

(1) Custom 19" Rack Navigational Computer

(1) Nobeltec Trident TimeZero Software interfaces with NavNet

(1) CMAP Florida South; Cuba and the Bahamas Charts for Nobeltec Software

## **Electrical Equipment**

---

- (2) ASEA shore power 400 VAC 3-phase connections
- (2) ASEA power management convertors: Input range 170 to 520 VAC and 180 amps, Output range of 230 to 400 VAC and 80 amps, frequency input range of 40 hz to 70 hz
- Batteries: (1) 24 VDC bank for engine start, (1) 24 VDC for generator, (1) 24 VDC bank for domestic use
- Batteries: ASEA convertors
- (4) battery chargers in engine room
- Security system: Alloy Yachts "Sea Touch" plus CCTV
- Monitoring system: Alloy Yachts "Sea Touch"
- Ventilation: Heinen & Hopman
- (6) AV150 underwater lights - 16 x 9 Optics Colours LED
- (6) AV150 mounting kit
- (6) Mains voltage AC DMX driver for HD Colours

---

## Safety Equipment

---

- (1) CO2 fixed system in engine operated remotely on deck
- (1) Autonica Aquamist sprinkler and NOVEC engine room detection system
- Extinguishers throughout the vessel
- (1) Fire blanket in galley
- Fire fighting BA equipment
- (2) Breathing apparatus sets
- Alarms: Laser eyes on all gates
- (3) Deck cameras; (2) remote mast camera (Bosch)

---

## Deck Equipment

---

- New Complete Superstructure Paint (Sept 2015)
- Hull Polished (Sept 2015)
- Teak Decks Sanded (Sept 2015)
- New bottom paint and prop speed (Oct 2014)
- (2) JL Audio removable speakers (bow) on pilothouse
- Pompanette rocket launcher w/8-rod holders
- Bow sun cushions - 3 pieces fabricated in Silver Furniture Sunbrella with dri-fast foam
- (2) MaxWell 350 lb HHP type anchors, (1) with 500' of chain, (1) with 400' of galvanized short link chain
- (2) MaxWell VWC 4500 hydraulic windlasses
- (2) MaxWell aft warping capstans
- (1) Foredeck crane (1.5 ton load)
- Alloy Yachts Passerelle
- Marquip side boarding ladders
- Searchlight: sanshin remote control from bridge
- Awning: (1) aft deck electric
- New Awnings (Sept 2015)

---

## Tenders and Toys

---

- 13' AB Inflatable with 60Hp Yamaha
- 2014 Yamaha FX Cruiser 1800cc Wave Runner 3-Seater
- 2015 A/B 13 VST with 60 Hp Yamaha 4/stroke
- Yamaha FX CRSR SVHO 2014 waverunner
- Tender-launching systems: 1 Alloy Yachts overhead gantry crane, 1 Nautical Structures EZ-1100-3 crane
- Custom Cruiser slide - Flag Blue
- (1) Kneeboard
- (1) Kayak

- (2) Wakeboards
- (1) Skis
- (3) Paddle boards

## Lazarette

---

- Large lazarette with teak floor
- Lazarette serves as a garage for the main tender and assorted watersport equipment
- Treadmill

## Exclusions

---

- A list of exclusions that include the owner's personal belongings will be provided upon request
- Christopher Martin artwork in salon and staterooms

## Исключения

---

При продаже яхты исключаются личные вещи владельца.

## Отказ от ответственности

---

Компания предоставляет описание судна или яхты добросовестно, но не может гарантировать точность этой информации, а также не ручается за техническое состояние. Покупатель должен проинструктировать своих агентов или оценщиков исследовать представленную информацию более подробно, по собственному желанию. Продажа судна или яхты, изменение цены или снятие с продажи будет происходить без предварительного уведомления.



# ФОТОГРАФИИ

**SALON**



**BAR AND SALON**



**SALON**



**DINING ROOM**



**GALLEY**



### MASTER STATEROOM



### MASTER BATHROOM



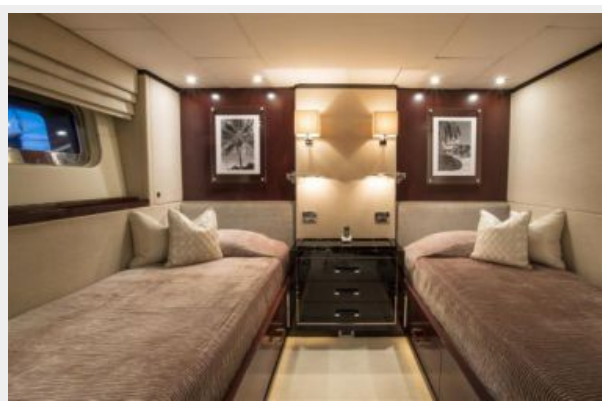
### QUEEN GUEST STATEROOM



### QUEEN GUEST STATEROOM



### TWIN GUEST STATEROOM



### TWIN GUEST STATEROOM AND PULLMAN



**WHEEL HOUSE**



**SUNDECK HELM**



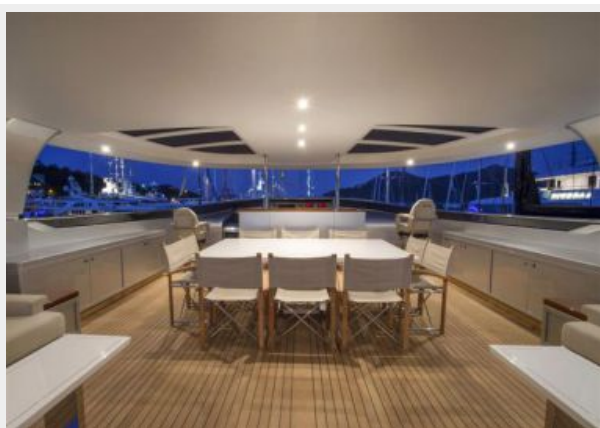
**SUNDECK DINING**



**SUNDECK BAR**



**SUNDECK DINING AL FRESCO**



**SUNDECK CHAISE LOUNGES**



**BOW SUN PAD**



**AFT DECK DINING**



**AFT DECK SEATING**



**ENGINE ROOM**



**ENGINE ROOM**



**AERIAL**



## AERIAL



## LAYOUT



## POLLY AND TOYS



# КОНТАКТЫ

---

Андрей Шестаков (Andrey Shestakov) – ведущий яхтенный брокер отдела продаж яхт и судов компании Shestakov Yacht Sales Inc. Официальный представитель Shestakov Yacht Sales Inc. для русскоговорящих клиентов в центральном офисе компании в Майами/Форт Лодердейл/Флорида/США.

## Контактная информация

---

Email: [andrey@shestakovyachtsales.com](mailto:andrey@shestakovyachtsales.com)

Web: [shestakovyachtsales.com](http://shestakovyachtsales.com)

## Телефоны

---

Краснодарский край: **+7(918)465-66-44**

США, Майами, Флорида: **+1(954)274-4435**

## Время работы

---

Понедельник – Суббота: **9:00 - 21:00**  
EDT

Воскресенье: **Закрето**

## Адрес

---



Harbour Towne Marina, 850 NE 3rd St,  
STE 213, Dania, FL 33004