

SHAITAN OF CORSICA — GOLDEN SUMMIT



Судостроитель: GOLDEN SUMMIT

Год постройки: 1996

Модель: Шхуна

Цена: ЦЕНА ЯХТЫ ПО ЗАПРОСУ

Местонахождение: Malaysia

Длина общая: 80' 0" (24.38m)

Мин. осадка: 5' 3" (1.60m)

Макс. осадка: 11' 8" (3.56m)

Купить SHAITAN of CORSICA — GOLDEN SUMMIT а также выбрать подходящую вам яхту из нашего каталога яхт вам поможет опытный яхтенный брокер Андрей Шестаков. На сегодняшний день компания Shestakov Yacht Sales Inc. имеет большое количество яхт в собственном списке продаж, а также тесно сотрудничает со всеми крупными яхтенными производителями по всему миру. Для того чтобы купить яхту SHAITAN of CORSICA — GOLDEN SUMMIT а также проконсультироваться по любому вопросу связанному с покупкой, продажей, чартером яхт позвоните по телефону **+7(918)465-66-44**.

ОГЛАВЛЕНИЕ

ОГЛАВЛЕНИЕ	2
ХАРАКТЕРИСТИКИ	5
Обзор	5
Основная информация	5
Размеры	5
Скорость, вместимость и масса	5
Размещение	6
Корпус и палуба	6
Информация о двигателе	6
ПОДРОБНОЕ ОПИСАНИЕ	7
About Shaitan of Corsica	7
Cockpit	7
Swim Platform	7
Deck Equipment	7
Mast & Spars	8
Navigation	8
Main Salon & Dining	8
Galley	9
Master Cabin	9
Guest Cabin	9
Forward Cabin	9
Crew Cabin	9
Chain Compartment	9
Engine Room	9
Исключения	10
Отказ от ответственности	10
ФОТОГРАФИИ	11
Aft Cockpit	11

Cockpit	11
Dinghy	11
Helm	11
Main Salon	11
Snorkel & Scuba Gear	11
Dining	12
Dining	12
Dining from Captain's Desk	12
Dining & Bar	12
Bar	12
Bar	12
Captain's Desk	13
Galley	13
Hallway	13
Lounge	13
Master Cabin	13
Master Cabin	13
Master Head	14
Master Cabin	14
Guest Head	14
Twin Guest Cabin	14
Safe	14
Guest Bunk Cabin	14
Crew Cabin	15
Engine Room	15
Foredeck Under Sail	15
Foredeck	15
Shaitan of Corsica	15
Shaitan of Corsica	15

Shaitan of Corsica	16
Hull Hauled Out	16
Hull Hauled Out	16
Hull Hauled Out	16
Hull Hauled Out	16
КОНТАКТЫ	17
Контактная информация	17
Телефоны	17
Время работы	17
Адрес	17

ХАРАКТЕРИСТИКИ

Обзор

Owner is seriously motivated. He enjoyed the boat during 2 circumnavigations and is now eager to see her with a new owner. The yacht is of steel construction and was custom built for the owner. It is rigged as a two mast schooner, with a large cockpit aft and accommodation below deck, forward. The machinery space is below the cockpit, with two access hatches, one on either side of the yacht. It has twin engines and is fitted with a bow thruster. There is a large saloon at the foot of the companionway from the cockpit, with three state rooms and two bathrooms forward, while a third cabin, with en suite is aft on the starboard side and the galley area on the port side.

Positioned above the galley and aft cabin is a small seating area with table to port, while the navigation and communication station is to starboard.

Основная информация

Тип судна: Шхуна	Подкатегория: Классическая яхта
Модельный год: 1997	Год постройки: 1996
Страна: Malaysia	Кубрик: Да

Размеры

Длина общая: 80' 0" (24.38m)	Длина по ватерлинии: 72' 0" (21.95m)
Мин. осадка: 5' 3" (1.60m)	Макс. осадка: 11' 8" (3.56m)

Скорость, вместимость и масса

Водоизмещение: 160000 Pounds	Чистый вес: 94 Pounds
Вместимость воды: 3700 Gallons	Вместимость сточного бака: 100 Gallons
Объем топливного бака: 2000 Gallons	

Размещение

Всего кают: 3

Всего коек: 5

Спальные места: 6

Всего ком. состава: 3

Каюты экипажа: 1

Койки экипажа: 2

Спальных мест экипажа: 2

Комм. состав экипажа: 1

Корпус и палуба

Материал корпуса: Steel

Информация о двигателе

Двигатели: 2

Производитель: Baudouin

Модель: 6D106S

Тип двигателя: Inboard

Тип топлива: Diesel

ПОДРОБНОЕ ОПИСАНИЕ

About Shaitan of Corsica

This expedition sailing yacht might be the right boat for you.

This 80' steel schooner's timeless design and quality construction represents a marine investment that retains lasting value, exceptional seaworthiness and the ability to cruise any latitude, any time, with trust and confidence.

She was born from different hull concepts combining the stability of a catamaran hull, the seaworthiness of a heavy commercial displacement vessel and the fine hull lines of a racing boat.

She is ready for a new owner, whether individual or corporate, who has a passion for adventure at sea (diving, charter, expedition, treasure hunting, survey, etc)

This sailing yacht offers a schooner rig with a complete furling system with a beautiful interior which was completed with 30 tons of natural Vietnamese mahogany, teak and other woods, beautifully fabricated and installed by masters of marine carpentry.

She offers a lovely and generous interior with 3 suites for owners and guests plus crew accommodation.

She is extremely economical under power and her best 24 hours performance under sail at 246 NM at 10.2 knots.

Cockpit

The cockpit helm provides excellent visibility and quick access to all of the main commands. The large cockpit table and bench provide lots of storage compartments and will be the perfect socializing area.

Swim Platform

Open platform for easy access to water. Large storage for diving equipment. Easy access and storage of the dinghy with the custom built arches.

Deck Equipment

The yacht has a stainless steel pulpit, together with stainless steel stanchions, and stainless steel wire rope lifelines, which appeared almost new.

There are two CQR anchors, each of 140 lbs, fitted at the bow, with one connected to a stated 150 m of half inch chain.

The yacht is fitted with a vertical Lewmar 3,000 electrically driven windlass, complete with a hand-held remote control. The anchor chain is stowed within a stainless steel container, housed within the chain locker compartment, which is also used for the storage of ropes and other equipment.

Mast & Spars

The yacht has two painted aluminium masts, with in-mast furling systems, which are 'stepped' on deck. Rigging is kept well tuned.

Each mast has two sets of aluminium spreader bars, which are also painted. These are secured by bolts through purpose-built brackets on the masts.

The main mast has a painted aluminium boom, connected by a gooseneck.

There are two painted aluminium whisker poles, which are mounted on the foremast.

Standing Rigging The yacht's standing rigging is of 1 x 19 Dyform stainless steel wire rope, with Norseman mechanical fittings and turnbuckles.

Two power assisted jib and staysail furlers and a Pro-furl staysail furler are provided for sail control.

Winches The yacht has all Andersen stainless steel self-tailing winches. On the foremast there are 2 x 46ST and 2 x line tender winches for whisker poles. On the main mast there are 2 x 46ST and 1 x 58ST, while on deck at the cockpit, there are 8 x 58ST and 1 x 46ST.

Navigation

The heart of the vessel is the raised salon with soaring views taking advantage of the perspectives offered by 23 feet of beam in an open yet comfortably divided space which makes up the social and entertainment areas. With the fully equipped electronics you will be able to maintain the navigation from the spacious and isolated navigation desk. All the while keeping an eye on the sea with an excellent view through the 6 huge window panels.

Main Salon & Dining

The huge living area offers beautiful 12 feet high ceilings. Interior wall panels area made in Vietnamese mahogany and the floors are Vietnamese oak with mahogany in-lay. The salon has a bar located on the starboard side equipped with fridge & freezer and also includes an audio

and video entertainment center. The dining room features a wide bench, table and seating on the port side.

Galley

The semi-enclosed galley is located aft of the dining area and is fitted with a stainless steel fridge/freezer unit, washer dryer and oven.

Master Cabin

The spacious master stateroom is found on the port side and features a storage compartment, 2 desks, fridge and a safe. The master cabin has its own private head with electric toilet, sink and bathtub.

Guest Cabin

A second guest cabin is located on the starboard side with 2 bunk beds, desk, closet and storage compartments.

Forward Cabin

(4) Guest cabin features one double bed, one single, and large storage space.

Crew Cabin

The crew cabin is found behind the bar with one double bed, one single bed and storage. The cabin features an extra washroom with electric toilet, shower and washbasin.

Chain Compartment

You can find a large storage chain compartment and storage room at the bow of the vessel. Notice that the chain does not repose directly against the hull, but in a separate steel and rubber compartment to prevent corrosion.

Engine Room

The engine room is completely sound insulated and provides enough room for any repairs or

maintenance. It comes with all the tools and lots of storage room.

- Auxiliary engines are 2 x Baudouin 6D106S, (marinised John Deere)
- 6-cylinder diesels
- Total horsepower of 210
- Each engine is fitted with a shaft-mounted 24 volt 60 amp alternator, that generate power when the yacht is under sail and the propellers are free wheeling **Generators:** 1 Onan MDKAE 16KW & 1 Onan MDKAL 6.5 KW

Исключения

При продаже яхты исключаются личные вещи владельца.

Отказ от ответственности

Компания предоставляет описание судна или яхты добросовестно, но не может гарантировать точность этой информации, а также не ручается за техническое состояние. Покупатель должен проинструктировать своих агентов или оценщиков исследовать представленную информацию более подробно, по собственному желанию. Продажа судна или яхты, изменение цены или снятие с продажи будет происходить без предварительного уведомления.

ФОТОГРАФИИ

С cockpit



Aft Cockpit



Dinghy



Helm



Snorkel & Scuba Gear



Main Salon



Dining



Dining



Dining from Captain's Desk



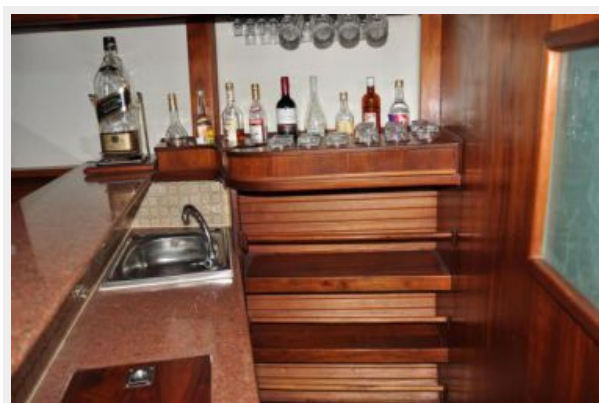
Dining & Bar



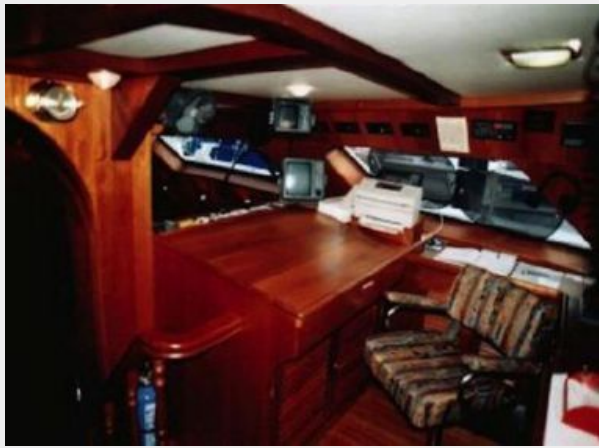
Bar



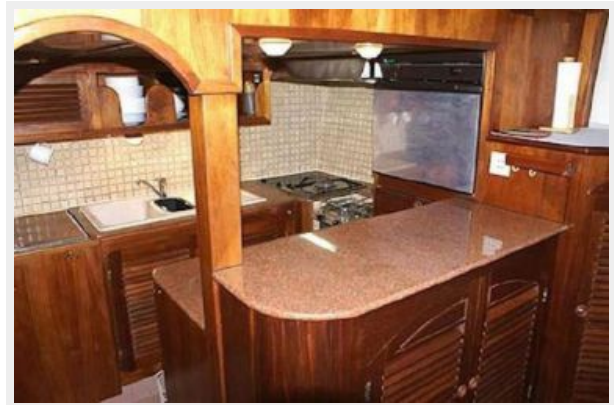
Bar



Captain's Desk



Galley



Hallway



Lounge



Master Cabin



Master Cabin



Master Cabin



Master Head



Guest Head



Twin Guest Cabin



Guest Bunk Cabin



Safe



Crew Cabin



Engine Room



Foredeck Under Sail



Foredeck



Shaitan of Corsica



Shaitan of Corsica



Shaitan of Corsica



Hull Hauled Out



Hull Hauled Out



Hull Hauled Out



Hull Hauled Out



КОНТАКТЫ

Андрей Шестаков (Andrey Shestakov) – ведущий яхтенный брокер отдела продаж яхт и судов компании Shestakov Yacht Sales Inc. Официальный представитель Shestakov Yacht Sales Inc. для русскоговорящих клиентов в центральном офисе компании в Майами/Форт Лодердейл/Флорида/США.

Контактная информация

Email: andrey@shestakovyachtsales.com

Web: shestakovyachtsales.com

Телефоны

Краснодарский край: **+7(918)465-66-44**

США, Майами, Флорида: **+1(954)274-4435**

Время работы

Понедельник – Суббота: **9:00 - 21:00**
EDT

Воскресенье: **Закрыто**

Адрес



Harbour Towne Marina, 850 NE 3rd St,
STE 213, Dania, FL 33004