

FLAMINGO DAZE — SEA FORCE IX



Builder: SEA FORCE IX

Year Built: 2010

Model: Sport Fisherman

Price: PRICE ON APPLICATION

Location: United States

LOA: 92' 0" (28.04m)

Beam: 22' 11" (6.98m)

Max Draft: 5' 5" (1.65m)

Cruise Speed: 28 Kts. (32 MPH)

Max Speed: 38 Kts. (44 MPH)

Our experienced yacht broker, Andrey Shestakov, will help you choose and buy a yacht that best suits your needs **FLAMINGO DAZE — SEA FORCE IX** from our catalogue. Presently, at Shestakov Yacht Sales Inc., we have a wide variety of yachts available on our sale's list. We also work in close contact with all the big yacht manufacturers from all over the world.

If you would like to buy a yacht **FLAMINGO DAZE — SEA FORCE IX** or would like help answering any questions concerning purchasing, selling or chartering a yacht, please call **+1(954)274-4435**

TABLE OF CONTENTS

TABLE OF CONTENTS	2
SPECIFICATIONS	3
Overview	3
Basic Information	3
Dimensions	3
Speed, Capacities and Weight	3
Accommodations	4
Hull and Deck Information	4
Engine Information	4
DETAILED INFORMATION	5
Accommodations	5
Deck Equipment	13
Electrical Equipment	14
Cockpit	14
Mechanical/Engine Room	16
Exclusions	19
Disclaimer	19
PHOTOS	20
CONTACTS	34
Contact details	34
Telephones	34
Office hours	34
Address	34

SPECIFICATIONS

Overview

Flamingo Daze is the finest performing sports fishing yacht on the market. With 3 staterooms comfortably accommodating 7 guests and 2 separate crew quarters accommodating up to 3 crew members, one gets the space of a mega yacht without sacrificing fishing performance. Powered by MTU 16 V2000 M93's, traveling is smooth and painless with Flamingo Daze, able to get up to a max speed of 38 knots with a comfortable cruising speed of 28 knots. Flamingo Daze is also fitted with 2 ARG Mitsubishi MSM 4000 gyroscopic stabilizers and custom thermal acoustic insulation throughout creating a smooth and quiet ride for the utmost comfort. Don't miss out! Schedule an appointment today!

Basic Information

Category: Sport Fisherman

Model Year: 2010

Year Built: 2010

Country: United States

Vessel Top: Enclosed

Fly Bridge: Yes

Dimensions

LOA: 92' 0" (28.04m)

Beam: 22' 11" (6.98m)

Max Draft: 5' 5" (1.65m)

Speed, Capacities and Weight

Cruise Speed: 28 Kts. (32 MPH)

Cruise Speed RPM: 1950 Kts.

Cruise Speed Range: 750

Max Speed: 38 Kts. (44 MPH)

Displacement: 138000 Pounds

Water Capacity: 500 Gallons

Fuel Capacity: 4500 Gallons

Accommodations

Total Cabins: 3

Total Berths: 5

Sleeps: 7

Total Heads: 3

Captain Cabin: True

Crew Cabin: 2

Crew Berths: 3

Crew Sleeps: 3

Crew Heads: 1

Hull and Deck Information

Hull Material: Fiberglass

Engine Information

Engines: 2

Manufacturer: MTU

Model: 16V2000

Engine Type: Inboard

Fuel Type: Diesel

DETAILED INFORMATION

Accommodations

The “FLAMINGO DAZE” boasts a World class cockpit, with a substantial Mezzanine deck, full-beam master stateroom, crew quarters, and a brilliant ship-like engine room with plenty of work space and redundant systems. The interiors are comfortable and luxurious but also practical. The light and bright element is achieved largely by its overly large windows (8) and its light wood and fabric choices. This vessel has three very large staterooms with a crew stateroom with its own separate entrance through the engine room. The master is very large. Aft of the master to port is the VIP which features a true king size bed. This stateroom has its own private very well appointed ensuite head with large stall shower. The starboard stateroom has side by side berths, including an upper berth for a total of three. This stateroom also has its own very nice well-appointed ensuite head.

SALON

As you enter this vessel through the electric salon door you have a very spacious salon with plenty of natural light. You have a very nice custom leather couch with storage to the port. The flooring is carpeting with runners. The appliances are all top of the line, and the refrigeration is all custom stainless steel under counter. There is a dining table to starboard that accommodates six people in their own chairs. · Samsung 46" LCD TV with Apple TV and an iPad and Satellite receiver

- Speakers with Subwoofer (surround sound system)
- iPod Docking Station w/remote and Blu-ray DVD
- Custom TV cabinet with DVD storage
- (2) Barrel chairs with (6) pillows
- Custom bottle and storage on both sides
- LED lighting with dimmers
- Window lambrequin and electric leather blinds
- Sub zero wine cooler
- Custom end table
- Custom coffee table with storage underneath

GALLEY

The galley was designed for entertaining and the ability to be able to have a formal gathering of family and friends. The galley is appointed with the best of appliances and plenty of storage and refrigeration along with a big Dinette, U-shaped with seating for 6.

- Wolf 5 burner cook top with vent
- Wolf microwave
- Viking (large) oven
- Sub zero icemaker
- Miele dishwasher
- Kitchen Aid disposal
- Refrigerator/freezer combination unit. All custom stainless under counter
- Trend Stone countertops and Dinette
- C-bea stainless fridge & freezer (4)
- (12) Cabinet drawers and storage with pull outs
- Bamboo flooring

MASTER STATEROOM

The master stateroom is located just forward of the galley and takes full advantage of her almost 23' foot beam. This stateroom is very eloquently decorated and her ensuite head offers her owners all of the comforts of home.

- King size bed, with storage and drawers
- Custom wrapped carpet with runner and custom cut hatch
- Custom wood cabinets throughout with plenty of storage (16)
- Samsung 40" LCD HDTV
- Direct TV with surround sound
- XM Radio
- Apple TV and iPad Controls

- Camera System
- Homedock iPod docking station with remote and headphones
- Desk with seating
- Hanging closets
- Custom designer comforter and (7) pillows
- Leather wall coverings
- Portholes for natural lighting
- Lights with dimmers
- Electric leather blinds both sides

Master Head Private room toilet and bidet with (18) cabinets & drawers Dark bamboo floor with light wood on the walls with door

- His and Her sinks
- Kohler silver fixtures
- (9) mirrored cabinets over counter
- Custom Trend Stone stone countertops
- Full length linen closet
- Glass door into shower fixtures
- (2) Wall sconces
- wall safe
- Custom thermal acoustic insulation to prevent hull water noise. Whisper wall overhead
- Lights with dimmers
- Bomar hatch for light

VIP STATEROOM

This stateroom features a true Queen size berth with plenty of storage. This stateroom is very

eloquently appointed and has its own ensuite head with whisper wall.

- Queen size bed with storage - (3) large drawers
- Sony Bravia theater system
- 36" Samsung LCD TV
- Sony Blu-ray and creation control with XM radio
- Satellite Receiver
- Electric leather blind
- Port hole for natural light
- DLO Homedock deluxe iPod docking station with remote
- Custom carpeting with wrapped hatches
- Large hanging closet
- Reading lights
- All lights on dimmers

VIP HEAD

- Single sink with Kohler fixtures
- (4) Mirrored cabinets with storage
- (4) Lower cabinets (dark bamboo) w/ (2) drawers
- Bamboo flooring with light trim
- Custom Trend Stone countertop
- Head Hunter upgrade china bowl toilet
- Large stall shower
- Bomar hatch for light

GUEST STATEROOM

This stateroom sleeps three very comfortable and also has its own ensuite head.

- Three custom berths with ensuite head and storage under (2)
- Samsung 36" LCD HDTV
- Blu-ray DVD and Crestron control
- (2) reading lights
- (2) cabinets with large hanging closet
- Custom carpet with hatch cutout
- Bomar hatch for natural lighting
- Cabinets for storage over starboard bunk with recessed storage under bunk

GUEST HEAD

- Head Hunter head with upgrade China Bowl Toilets
- Kohler sink with silver fixtures
- (2) Mirrored cabinets
- (2) Under sinks with bamboo fronts
- Port hole for natural light
- Leather shade
- Stall shower with single door
- Dark Bamboo Flooring with light trim
- Lights with dimmers
- Access door from hallway for day head

CREW QUARTERS

Starboard Side:

- (2) Berths
- (3) Cabinet Storage areas
- TV's with DVD and satellite receivers
- Carpet with runners
- Silver King fridge
- Silver king freezer
- Furuno alarm screen

Port Side:

- Captains Quarters
- (6) Cabinets
- Hanging closet with safe
- 36" Samsung LCD TV
- Blu-ray DVD and Satellite
- iPad with XM Radio
- Alarms/Monitors
- (2) Drawers
- Carpeting
- Head
- Shower
- Toilet
- Insta Hot water

BRIDGE

The enclosed fly bridge can be accessed from either the cockpit or from the salon with its custom stair well. This is a true command bridge with state of the art electronics, custom flooring and

plenty of storage. Her eloquently appointed décor has lots of seating area to accommodate all of her guests. Including L-shaped seating with storage and table.

- Custom bamboo flooring
- Samsung 32" LCD TV
- Denon-AVR-2808 7.1 Surround Sound Receiver with 5 audio speaks and sub-woofer
- Blu-ray DVD with satellite receiver
- Universal remote control with Apple iPad
- DLO Homedock Deluxe iPod socking station with remote
- Full function command helm station
- Two (2) MTU Engine Display Modules (EDM's)
- MTU' engine controls with station active pad
- Back up controls are integral with IMDEC system
- Magnetic compass (5")
- Alarm panel display to accompany monitoring system
- Fuel level panel, start/stop and ignition key switch
- Anodized aluminum steering wheel (16")
- International air horns
- Bow & stern thruster controls
- Electric level blinds with remote
- Crown Limited ultra-leather helm chair and (2) Stidd double helm seats
- Double Opacmare electric doors
- Sink with fold up faucet
- Carpeting with runners
- Black Trend Stone countertops and table
- Whisper wall overhead liner
- Designer stairway to the salon

-
- L-shaped settee with storage and pedestal table
 - Aft deck seating covered in snubbers fabric and storage within
 - Ladder to skybridge
 - Three (3) commercial grade windshield wipers with washdown
 - A stand-alone 12/24 V.D.C system, located on the bridge, with independent 4D "Glass Mat" Batteries and charger for emergency communication and electronics
 - Lights with dimmers
 - Aft helm on deck with controls
 - Aft deck seating/storage
 - Teaser reels
 - (6) Rod holders
 - Nav Equipment/Electronics
 - (3) Furuno NavNet 3D Processors
 - (9) KEP monitors
 - Bridgeview monitors switching systems
 - VEI night vision camera
 - Carlisle & Finch Spotlight
 - Furuno satellite compass
 - Furuno GPS Navigator backup
 - ISIS vessel monitoring tank/alarm system
 - Simrad AP50 Autopilot
 - KEP Lviathan Nav software (backup)
 - Weather works software
 - (4) ICOMVHF radio
 - (5) Cameras (2-engine room, mast, underwater, night vision)
 - KVH HD-7 TV

- KVH V-Sat 7 Communications
- Wave wifi and cell
- KVH 252 mini broadband
- AIS tracking system
- Furuno DFF 1 & DFF 3 depth sounder
- Crestron 1080 HD Direct TV entertainment system with iPad interface

SKYBRIDGE

- Double Stidd chairs
- Large Lounge seating with cushions and storage
- (4) Cockpit flood lights
- (3) KEP screens
- (2) Radar controls
- (2) MDEC guages
- Bow and stern controls
- Auto Pilot remote
- Molded in hardtop
- Red, White, and blue lighting
- (2) VHF radios
- Bridge view for (5)
- (4) stereo speakers
- Forward outlet

Deck Equipment

BOW

- Stainless bow rail
- SWI 2200 hydraulic davit
- Teak bow pulpit
- Hydraulic windlass with remote pedals
- 200' stainless chain
- Anchor locker with outlet
- 2010 17' Nautica with 115 hp Yamaha
- 2008 Sea Doo Wave runner RX7

Electrical Equipment

ELECTRICAL

- Two 75' 100a - 240VAC shore cords provide shore electricity to the ship.
- (2) 75' Extensions
- Each shore cord is on a powered cable hauler
- The shore cords are protected with over current breakers, surge protection and galvanic isolators
- Multiple tap isolation transformers isolate the ship from the shore
- A split bus 240 VAC power distribution panel selects the power source, monitors and distributes the power to the sub-panels
- Custom made zone AC sub-panels
- (3) Deck hatches to lazarette
- Custom table with seating
- (2) Northern Light start/stop gauge panel
- 100 amp Shore protector

Cockpit

This vessel boasts one of the largest cockpits in her class. It is appointed with a mezzanine deck with a custom table with chairs. From the lanai deck you can access the cockpit from either the port or starboard stairs. As you walk down her stairs into the cockpit you will notice two storage areas on both the port and starboard. Once in the cockpit you will find plenty of custom refrigeration and engine access. Her teak deck has:

- custom in deck fish boxes both to port and to starboard.
- Transom tuna door with custom polished 316 stainless steel hinge
- Two removable in-deck fish boxes with macerators
- Scuppered, self-bailing cockpit
- Four storage areas behind molded doors.
- Tackle storage drawers in one of the four leisure deck storage compartments
- Custom aluminum engine room entrance door/hatch
- Fresh water wash down
- Hydraulic 50' triple spreader Rupp riggers
- Custom dive tank storage with Bauer air compressor
- Custom hydraulic swim platform by Palm Beach Towers
- Cockpit shade cover
- (4) Cockpit lights
- Salt water wash down
- Traditional teak sole as well as covering boards
- Custom live bait well with window and lights
- (6) Underwater lights
- Custom ice box storage with Cob plate
- (4) Stereo speakers
- (3) Deck hatches to lazarette
- Custom table with seating
- (2) 75' 100 amp Shore cords

- (8) Rod holders in gunnels

Mechanical/Engine Room

- Twin DDC-MTU 16V2000 M93 2600 BHP
- 24 V.D.C. starting and electrics
- Power steering pump, filter and heat exchanger on each engine
- Hydraulic system pump mounted on each gear box
- ZF marine reduction transmission
- MTU Vibration mounts
- Twin Northern Lights 55Kw 120/240 V.A.C. marine diesel generators(2950 hours- 7/22/2015)
- Fresh water cooling system with remote control panel
- Propulsion Shaft Line: Aqualoy 22 High Strength propeller shafts turned and trued.
- Thick walled filament wound fiberglass shaft log (tube) with Thordon high performance shaft bearing in the aft end with the forward end machined for the shaft seal hose. The tube is laser aligned and structurally glassed to the hull with multiple layers of glass and epoxy resin inside and out.
- Drip-less shaft seals secured to the shaft logs
- New batteries 2013
- Clarion WatertightCD/Tuner/Multimedia Ctrl.
- Clarion CeNet iPod Interface for DFZ675MC
- PolyPianar 5x7 Box Marine Speakers
- Multiple aluminum fuel tanks having a total capacity of approximately 4,500 gallons
- Each fuel tank has two fuel fills, dual vents, two level monitoring points and full port ball valves on all pick-up tubes. Engine room tanks have sight tubes.
- The fuel management panel has the valving for the fuel transfer system, engine fuel supply selection and generator fuel supply and return selection.
- Each propulsion engine can draw fuel from the four primary engine supply tanks via a four-way selector valve on the fuel management panel.

- Each propulsion engine has a dual element fuel filter.
- Each propulsion engine has an independent fuel-priming pump.
- Each generator engine draws fuel from the center cockpit fuel tank.
- Each generator engine has a single element fuel filter.
- Each generator engine has an independent fuel-priming pump.
- The “from any tank to any tank” fuel transfer system is controlled by the supply and return valve manifolds on the fuel management panel.
- Fuel movement is by a bronze gear pump activated at the fuel management panel.
- Backup Head Hunter fuel alarms & monitoring
- 50 Gallon use in new oil tank
- (2) ARG Mitsubishi MSM 4000 Gyros
- Next to the fuel management panel are the fuel transfer supply and return “quick disconnect” fittings activated by ports on the supply and return valve manifolds on the fuel management panel.
- A fuel polishing unit parallels the primary fuel transfer pump to clean fuel from any tank to any tank and serve as a back-up to the fuel transfer pump.
- All fuel supply, return and transfer hose is USCG approved with brass fittings.
- All tanks have a level sender with monitors near the fuel management panel and on the primary helm station
- The FM-200 fire suppression system for the engine room is fully engineered by the manufacturer.
- One aluminum water tank with a capacity of 500 gallons
- Each water tank has a water fill, dual vents, two level monitoring points and full port ball valves on all pick-up tubes.
- Headhunter primary fresh water pressure pump supplies a filtered and non-filtered split delivery manifold system. Pump is isolated with valves
- Tidal Wave sewage treatment system
- Sea Recovery 2 A 1,400 GPD watermaker discharges into the fresh water tanks
- Filtered “potable” fresh water delivery system with accumulator tank supplies water for

consumption. From the central PVC trunk line, valve isolated branch lines to each end user device are color-coded poly tubing.

·Non-filtered fresh water delivery system with accumulator tank supplies water for the toilet system.

·Two 20-gallon water heaters are zoned for quick response. Each water heater has independent valving and check valves for isolation.

·Dock-side water inlet

·The hydraulic system for the bow thruster and anchor windlass is fully engineered by the equipment manufacturer.

·Hydraulic power pumps are mounted on both ZF engine transmission “C” pads for reliable power. The pumps are sized to give 100% rated power to the thrusters and windlass with both engines at idle and 80% power with one pump operating.

·Reverse cycle chilled water air conditioning with (4) staged compressors

·Each living area to have one breathe easy UV sterilizing unit.

·The engine oil sumps, transmission oil sumps and generator oil sumps are fitted with quick disconnects.

·Oil movement is by a portable pump with hoses and quick disconnects.

·Livos engine room fans

·Cruisair A/C

·MDEC read-outs

·ISIS System to alert Captain by phone and or email

·(5) Freezer controls with alarms

·(2) Separate fuel water separators

·(2) Cameras

·(3) Charles battery chargers - 2014

·Compressed air System

·The air compressor is oil-less type with storage tank

·Phone/Intercom system

·Polished stainless panels on ceiling and sides on fuel tanks

·Painted engines of stringers - white ·Bauer dive compressor

Exclusions

Owner's personal belongings.

Disclaimer

The Company offers the details of this vessel or yacht in good faith but cannot guarantee or warrant the accuracy of this information nor warrant the condition of the vessel. A buyer should instruct his representatives, agents, or his surveyors, to investigate such details as the buyer desires validated. This vessel or yacht is offered subject to prior sale, price change, or withdrawal without notice.

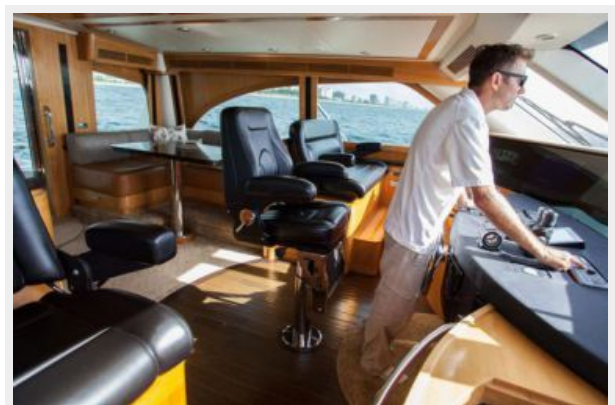
PHOTOS









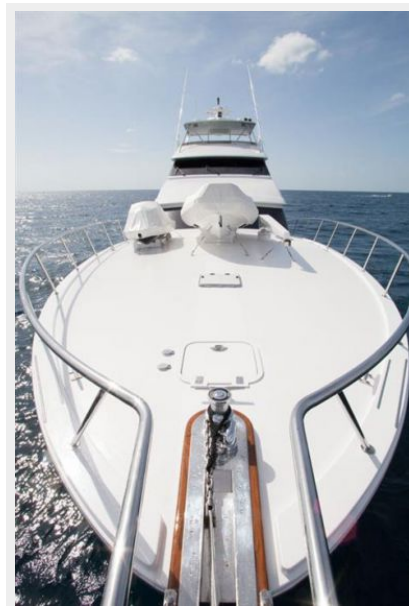




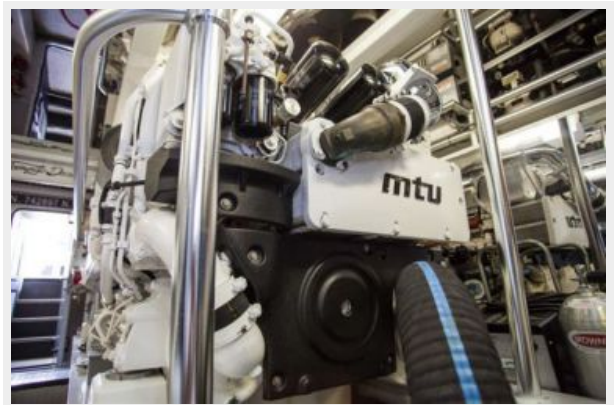


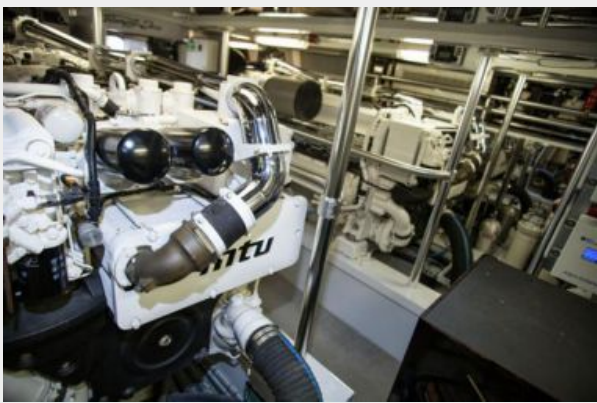


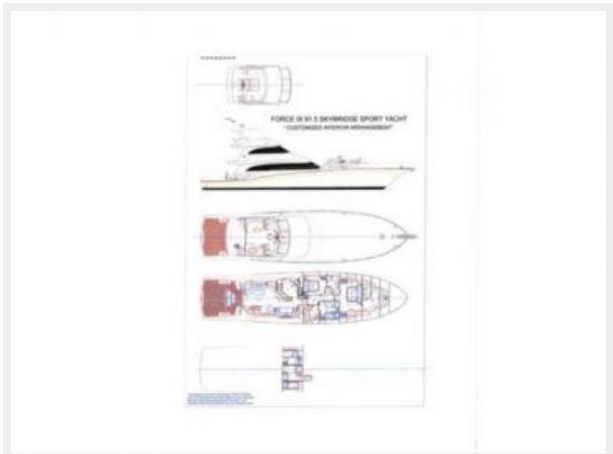












CONTACTS

Andrey Shestakov, leading yacht broker of the sales department of Shestakov Yacht Sales Inc. Shestakov Yacht Sales Inc., the official representative of the Miami/Fort Lauderdale FL headquarters.

Contact details

Email: andrey@shestakovyachtsales.com

Web: shestakovyachtsales.com/en/

Telephones

USA: +1(954)274-4435

Office hours

Monday – Saturday: **9:00 - 21:00** EDT

Sunday: **closed**

Address



Harbour Towne Marina, 850 NE 3rd St,
STE 213, Dania, FL 33004