

POCO LOCO — MORGAN



Builder: MORGAN

Year Built: 1988

Model: Cruising Sailboat

Price: PRICE ON APPLICATION

Location: United States

LOA: 44' 0" (13.41m)

Beam: 13' 6" (4.11m)

Min Draft: 5' 0" (1.52m)

Max Draft: 5' 0" (1.52m)

Our experienced yacht broker, Andrey Shestakov, will help you choose and buy a yacht that best suits your needs **Poco Loco — MORGAN** from our catalogue. Presently, at Shestakov Yacht Sales Inc., we have a wide variety of yachts available on our sale's list. We also work in close contact with all the big yacht manufacturers from all over the world.

If you would like to buy a yacht **Poco Loco — MORGAN** or would like help answering any questions concerning purchasing, selling or chartering a yacht, please call **+1(954)274-4435**

TABLE OF CONTENTS

TABLE OF CONTENTS	2
SPECIFICATIONS	3
Overview	3
Basic Information	5
Dimensions	5
Speed, Capacities and Weight	5
Accommodations	5
Hull and Deck Information	5
Engine Information	6
PHOTOS	7
CONTACTS	12
Contact details	12
Telephones	12
Office hours	12
Address	12

SPECIFICATIONS

Overview

This Morgan 44 Center Cockpit is well maintained live aboard blue water cruising sailboat. She has been extensively cruised and maintained by her knowledgeable Captain owner.

Highlights include:

Centerline queen aft cabin, roller-furling main and genoa, all running rigging leads to cockpit for single handing, expandable forespar whisker pole and expandable spinnaker pole, full keel, Air Breeze wind generator, Seimens 55 Watt solar panel, Garmin 740S color chart plotter with 18 mile radar and AIS overlay, SSB radio, water maker, air conditioning and Avon tender with 5hp outboard.

Specs Flag of Registry: United States Keel: Full **Dimensions** LOA: 44 ft 0 in Beam: 13 ft 6 in LWL: 35 ft 4 in Minimum Draft: 5 ft 0 in Maximum Draft: 5 ft 0 in Displacement: 23750 lbs Ballast: 8200 lbs **Engines** Engine 1: Engine Brand: Yanmar Engine Model: 4J series 4 cylinder Engine Type: Inboard Engine/Fuel Type: Diesel Engine Hours: 4600 Propeller: 3 blade propeller Drive Type: Stern drive Engine Power: 44 HP **Tanks** Fresh Water Tanks: 1 (215 Gallons) Fuel Tanks: 1 (50 Gallons) Holding Tanks: 1 (30 Gallons) **Accommodations** Number of single berths: 2 Number of double berths: 2 Number of cabins: 2 Number of heads: 2 **Electronics** Log-speedometer - via Garmin 740S VHF - West Marine Oceanus Autopilot - Autohelm 6000 with controler at helm Compass Plotter - Garmin 740S color chart plotter with 18 mile radar and AIS overlay Radar Depthsounder - Stowe digital depth finder Radar Detector - 18 mile radar with scanner on mast Navigation center **Sails** Furling mainsail - Mack sails Furling genoa - 145%, 7 oz. **Rigging** Electric winch - Lewmar Concept 1 reversing with foot switches on deck and remote at helm Steering wheel **Inside Equipment** Battery charger - Promariner 40 amp Deep freezer Electric bilge pump - 2 x Rule 2000 GPH submersible automatic bilge pumps Air conditioning - Cruisair 16,000 reverse cycle, new compressor 2013 Refrigerator - Two box Adler Barbor 12v Microwave oven - 120 volt Oven - 120 volt toaster oven Marine head - with electric macerator pump Fresh water maker - Spectra 19 GPH 12 volt Hot water - Rarritan 120 volt and engine heated 6 gal water heater Manual bilge pump - Diaphragm hand pump in cockpit **Electrical Equipment** Generator - Universal 5.8kw (1300 hrs) Shore power inlet - 120 volt 30 amp Electrical Circuit: 12V **Outside Equipment/Extras** Swimming ladder Radar reflector Tender - Avon 320 Lite 2004 with Mercury 5 hp outboard 2013 Davits - Welded stainless steel Wind generator - Air Breeze with controller and digital amp meter 2012 Liferaft - 2-person valise stowed (out of date) Solar panel - Seimens 55 Watt panel on arch Outboard engine brackets Electric windlass **Covers** Spray hood Bimini Top

Accommodations

The Morgan 44' Center Cockpit offers very comfortable accommodations for living and cruising in comfort. This yacht has a very nice layout; traditional and warm with beautiful craftsmanship everywhere you look! Starting forward is large V-berth Guest suite with

ample drawers and cabinets for personal items, a full size hanging locker to port and in-suite head to starboard with toilet, shower and sink/vanity. Continuing aft into the spacious salon there is a L-shaped settee with a teak table starboard with a straight settee opposite. Aft of port settee is a well appointed Nav station and a large U-shaped galley to starboard equipped with Two box Adler Barbour refrigerator/freezer, two burner stainless steel range/oven, microwave and toaster oven. Moving aft along the port passage past the engine room to the spacious master aft cabin with large hanging locker to port, drawers, cabinets centerline island queen berth, in-suite head with toilet, sink, vanity and separate tub/shower stall.

Rigging and Winches

- Facnor main in-mast
- Hood Sea Furl jib furler 4 years old
- All running rigging leads to cockpit
- 2 halyard winches on mast
- 2 x Lewmar 52 ST primary winches in cockpit
- 2 x Lewmar 10 ST winches in cockpit
- Mainsheet traveler aft of helm with cam cleat adjusters
- Expandable Forespar wisker pole and expandable spinnaker pole

Electric

- 120 Volt 30 amp shore power
- A/C-D/C electric panels at navigation station
- Air Breeze wind generator with controller
- Seimens 55 watt solar panel on arch
- 2 group 27 12 volt lead acid start batteries
- 6 x 6 volt 660 amp/hr golf cart house batteries
- Promariner 40 amp Smart Charger
- 120 amp main engine alternator
- Universal 5.8 kw 120 volt diesel generator (1300 hrs)
- 100 amp generator alternator
- Link 20 D.C. system monitor

Ground Tackle

- 75# Bruce anchor with 180' chain rode
- 45# CQR anchor with 30' chain and 150' 5/8" nylon rode
- Split anchor locker
- Stainless steel anchor swivels
- Lewmar Concept 1 reversing 12 volt anchor windless with foot switches on foredeck and remote control in cockpit

Basic Information

Category: Cruising Sailboat

Sub Category: Center Cockpit

Model Year: 1988

Year Built: 1988

Country: United States

Dimensions

LOA: 44' 0" (13.41m)

LWL: 35' 4" (10.77m)

Beam: 13' 6" (4.11m)

Min Draft: 5' 0" (1.52m)

Max Draft: 5' 0" (1.52m)

Speed, Capacities and Weight

Displacement: 23750 Pounds

Water Capacity: 215 Gallons

Holding Tank: 30 Gallons

Fuel Capacity: 50 Gallons

Accommodations

Total Cabins: 2

Total Berths: 2

Total Heads: 2

Hull and Deck Information

Hull Material: Fiberglass

Engine Information

Engines: 1

Manufacturer: Yanmar

Model: 4J series 4 cylinder

Engine Type: Inboard

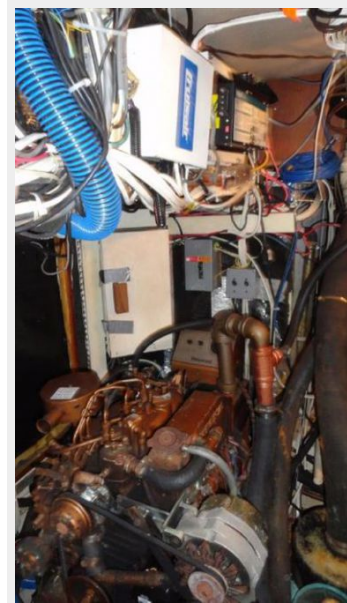
Fuel Type: Diesel

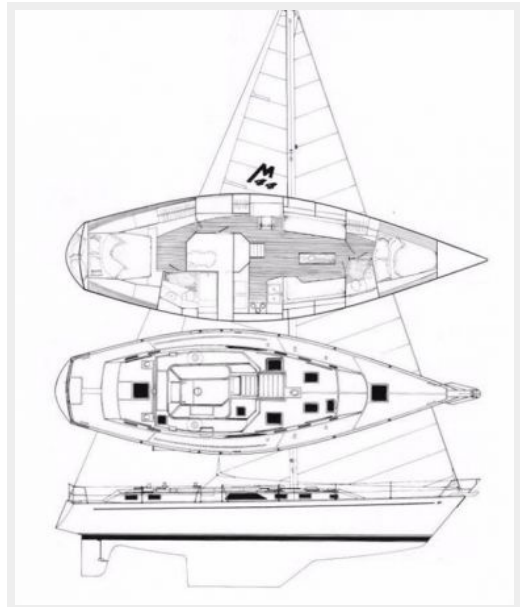
PHOTOS











CONTACTS

Andrey Shestakov, leading yacht broker of the sales department of Shestakov Yacht Sales Inc. Shestakov Yacht Sales Inc., the official representative of the Miami/Fort Lauderdale FL headquarters.

Contact details

Email: andrey@shestakovyachtsales.com

Web: shestakovyachtsales.com/en/

Telephones

USA: +1(954)274-4435

Office hours

Monday – Saturday: **9:00 - 21:00** EDT

Sunday: **closed**

Address



Harbour Towne Marina, 850 NE 3rd St,
STE 213, Dania, FL 33004