

UN BELIEVABLE II — OCEAN YACHTS



Builder: [Ocean Yachts](#)

Year Built: 2003

Model: Sport Fisherman

Price: PRICE ON APPLICATION

Location: United States

LOA: 57' 0" (17.37m)

Cruise Speed: 26 Kts. (30 MPH)

Max Speed: 31 Kts. (36 MPH)

Our experienced yacht broker, Andrey Shestakov, will help you choose and buy a yacht that best suits your needs **Un Believable II — Ocean Yachts** from our catalogue. Presently, at Shestakov Yacht Sales Inc., we have a wide variety of yachts available on our sale's list. We also work in close contact with all the big yacht manufacturers from all over the world.

If you would like to buy a yacht **Un Believable II — Ocean Yachts** or would like help answering any questions concerning purchasing, selling or chartering a yacht, please call **+1(954)274-4435**

TABLE OF CONTENTS

TABLE OF CONTENTS	2
SPECIFICATIONS	5
Basic Information	5
Dimensions	5
Speed, Capacities and Weight	5
Accommodations	5
Hull and Deck Information	5
Engine Information	6
DETAILED INFORMATION	7
Vessel Overview	7
Salon	7
Dinette	7
Galley	8
Master Stateroom	8
Master Head	8
VIP Stateroom, Forward	9
VIP Head	9
Guest Stateroom	9
Enclosed Flybridge	9
Electronics & Navigational Equipment	10
Flybridge Aft Deck	10
Deck Equipment	11
Cockpit	11
Engine Room & Mechanical Equipment	12
Upgrades Done in 2015	12
Remarks	13
Exclusions	13
Disclaimer	13

PHOTOS	14
Salon	14
Salon	14
Salon	14
Salon	14
Salon	14
Galley	14
Galley	15
Galley	15
Dinette	15
Master Stateroom	15
Master Stateroom	16
Master Stateroom	16
Master Stateroom	16
Master Head	16
Master Head	17
Master Head	17
Master Head	17
VIP Stateroom	17
VIP Stateroom	18
VIP Stateroom	18
VIP Head	18
VIP Head	18
Guest Stateroom	19
Guest Stateroom	19
Guest Stateroom	19
Guest Stateroom	19
Guest Head	20
Guest Head	20

Laundry	20
Enclosed Flybridge	20
Enclosed Flybridge	21
Enclosed Flybridge	21
Enclosed Flybridge	21
Enclosed Flybridge	21
Flybridge Aft Deck	22
Flybridge Aft Deck	22
Flybridge Aft Deck	22
Cockpit	22
Cockpit	23
Cockpit	23
Cockpit	23
Cockpit	23
Cockpit	23
Engine Room	23
Engine Room	24
Engine Room	24
Engine Room	24
Engine Room	24
Engine Room	24
Engine Room	24
Un Believable II	24
Bow Profile	25
Stern Profile	25
CONTACTS	26
Contact details	26
Telephones	26
Office hours	26
Address	26

SPECIFICATIONS

Basic Information

Category: Sport Fisherman

Model Year: 2004

Year Built: 2003

Country: United States

Fly Bridge: Yes

Cockpit: Yes

Dimensions

LOA: 57' 0" (17.37m)

Speed, Capacities and Weight

Cruise Speed: 26 Kts. (30 MPH)

Max Speed: 31 Kts. (36 MPH)

Water Capacity: 200 Gallons

Holding Tank: 42 Gallons

Fuel Capacity: 872 Gallons

Accommodations

Total Cabins: 3

Total Heads: 3

Hull and Deck Information

Hull Material: Fiberglass

Engine Information

Engines: 2

Manufacturer: Caterpillar

Model: C-18

Engine Type: Inboard

Fuel Type: Diesel

DETAILED INFORMATION

Vessel Overview

Unbelievable is what this boat is. Truly the cleanest boat I have seen in years. The owner has spared no expense in making this boat the nicest in today's market. She has 875 hrs on desirable CAT C18 with all the updates and 1000 hr service just completed as well as having the turbos blueprinted, fresh bottom paint, new cutlass bearings, wheels rebalanced, the list goes on and on. Loaded with all the right stuff that makes this boat the ultimate fishing or cruising machine anyone would be proud to own. All it needs is your personal gear.

Salon

- Slide entrance door
- Teak with maple inlay wood interior
- Bull nose finish in high gloss
- Carpet flooring
- Canvas runner
- Designed chair
- L-Shaped sofa with storage underneath
- Icom VHF 502 Behind sofa
- Custom ottoman
- Fabric lambrequins and Hunter Douglas blinds
- Scottsman ice maker
- Samsung flat screen TV with Bose surround sound
- Spiral staircase (internal access to flybridge)
- Zone air conditioning
- Overhead lighting
- Ship's service panel
- AC outlets
- Ceiling hand rail
- Full carpet runner

Dinette

- Step-up dinette
- High gloss teak table
- (2) Large benches for sitting
- Carpet floor
- Cabinet for storage
- Overhead lighting

Galley

- Teak and maple inlay wood
- Teak and holly flooring
- Corian counter tops
- Deep sink with faucet, pure water and soap dispenser
- Dual Sub-Zero freezer
- Dual Sub-Zero refrigerator
- Convection/microwave oven
- Trash compactor
- Kenmore dishwasher
- Three-burner stove top
- Exhaust fan
- Drawers and cabinets for storage
- Overhead lighting
- AC Outlets

Master Stateroom

- Walk-Around king size bed with drawer storage
- (2) Night stands with lamp shades and drawers
- Carpet flooring
- Teak with maple inlay woodwork
- High gloss countertop finish
- Abundance of drawers and storage
- Large mirror at sit-down vanity
- JVC TV with DVD and SAT
- Cedar-lined hanging closets
- Overhead lighting with dimmers
- AC outlets
- Zoned air conditioning

Master Head

- Teak and holly flooring
- Corian countertop with oval sink
- Double mirrored vanity
- Vacu-Flush head
- Walk-in shower with seat
- Hanging towel tacks
- Exhaust fan
- Overhead lighting
- AC outlets

VIP Stateroom, Forward

- Queen size bed
- Cabinets all teak with maple inlay
- Cedar-lined dual hanging closets
- Carpet flooring
- JVC TV with DVD & SAT
- Large mirror on wall
- Bed-side drawers on each night stand
- Overhead cabinets
- Full length mirror on bathroom door
- Private head access

VIP Head

- Private access to VIP stateroom
- Vacu-Flush head
- Sink with mirrored vanity
- Walk-in shower with seat
- Under sink cabinets
- Exhaust fan
- Overhead lighting
- AC outlets
- Air Conditioning

Guest Stateroom

- Twin side-by-side berths
- Night stand between berths
- Drawers under beds
- Teak and maple inlay cabinetry
- High gloss top finish
- Wall cabinets
- Carpeted flooring
- Overhead lighting with dimmer
- AC Outlets
- Zoned air conditioning
- Toshiba TV with DVD

Enclosed Flybridge

- Fully enclosed air conditioning flybridge

- Forward and aft windows with custom made shades
- Windows tinted
- Carpet flooring
- Door access to aft bridge station
- U-Shaped lounge seating
- Teak woodwork and cabinetry
- (2) Pompanette helm chairs with foot rests
- Full electronics package
- Under helm storage
- Samsung Flat screen TV with SAT
- U-Line refrigerator

Electronics & Navigational Equipment

- CAT Marine power digital gauges
- Northstar 6000i
- Furuno NavNet 15" VEI screen
- 6" Ritchie compass
- Interphase forward looking sonar
- Icom 504 VHF
- Simrad autopilot AP20
- Raymarine Tridata
- Raymarine Wind speed indicator
- ACR Spotlight
- Trim tab indicator gauges
- Bow thruster by Vetus
- Side by side Glendenning electronics controls
- Fuel gauges
- Windshield wiper controls
- Sirius XM Radio
- Clarion Marine stereo
- Underwater lights
- Sun screens
- Engine room & cockpit cameras
- SAT TV
- (3) New DirecTV receivers

Flybridge Aft Deck

- Control station - duplicate of basics
- Custom swivel helm seat
- Remote VHF
- Stereo speakers

- (8) Rod holders
- Clear 'see-through' hatch lid to cockpit
- Spot lights

Deck Equipment

- Bow pulpit
- Danforth anchor with windlass
- handrail on side of house
- Polished allow bow rail
- (3) Spreader Rupp riggers
- (4) Deck cleats
- Frameless windows
- Center rigger
- (2) Wing rod holder
- (2) Bomar hatches
- Custom teak decks by Scopinich
- All decks and hardtop just awlgripped
- (2) 50 amp shore power cords

Cockpit

- Full cockpit cover
- Teak cockpit & covering boards
- Scopinich chair with foot rest
- Rocket launcher with drawer and prep table
- Step box with teak lid
- Tuna door with lift-up gate
- (16) Rod holders
- (2) In-deck dunnage boxes with access to bilge
- (2) In-deck fish boxes with drains (one refrigerated and one with ice dump)
- Lift up step drink storage
- Seven-step ladder to flybridge
- Tackle center with (3) drawers
- Wash basin
- Cockpit freezer
- Engine room access
- Full cockpit enclosure with zip-up sides
- Fresh water & salt water washdown
- Deck drains
- Live bait well in transom covering board
- Side drop down doors for storage compartment

- Side steps for foredeck access (port & starboard)
- SSI shower box (hot/cold)
- Cockpit camera
- Bait prep center

Engine Room & Mechanical Equipment

- Twin Caterpillar C18s with 1010HP, 875 hours
- Caterpillar 1000hr engine service completed, June 2015
- Blueprint turbos - June 2015
- New heat exchanges - June 2015
- Cutlass bearings - June 2015
- Westerbeke 21.5 kW generator - 1090 hours
- Westerbeke 1000hr engine service completed
- Racors for mains and generator
- Sea Fire Auto fire release system
- Glendenning retractable cable system
- Engine room fans/blowers
- Sound and heat insulation
- Awlgrip finish
- Reverso electric oil exchange pump
- Reverso electric fuel priming pump
- Spectra watermaker
- Eskimo ice machine
- Cruisair AC units
- Cruisair freezer/fridge units
- Engine/house battery banks
- Hynautic steering
- 120/24 Volt lightning
- Sentry 24V/40 amp battery charger
- All new batteries

Upgrades Done in 2015

- NEW bottom paint
- Pull wheels and balance
- Matrix coat running gear
- NEW Transom and shaft zincs
- R&R Rudder assembly
- Wax upper and lower hull
- All engines lube & filters
- (4) NEW Port side batteries

Remarks

Un Believable II is just that - with many recent updates/upgrades done in 2015 she is in wonderful condition! She provides excellent living space, has plenty of storage, and is equipped to fish!

Exclusions

Owner's personal belongings.

Disclaimer

The Company offers the details of this vessel or yacht in good faith but cannot guarantee or warrant the accuracy of this information nor warrant the condition of the vessel. A buyer should instruct his representatives, agents, or his surveyors, to investigate such details as the buyer desires validated. This vessel or yacht is offered subject to prior sale, price change, or withdrawal without notice.

PHOTOS

Salon



Salon



Salon



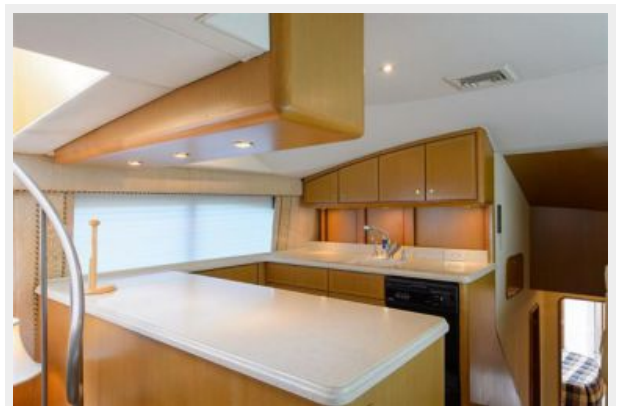
Salon



Salon



Galley



Galley



Galley



Dinette



Master Stateroom



Master Stateroom

Master Stateroom



Master Stateroom



Master Head



Master Head



Master Head



Master Head



VIP Stateroom



VIP Stateroom



VIP Stateroom



VIP Head



VIP Head



Guest Stateroom



Guest Stateroom



Guest Stateroom

Guest Stateroom



Guest Head



Guest Head



Laundry



Enclosed Flybridge



Enclosed Flybridge



Enclosed Flybridge



Enclosed Flybridge



Enclosed Flybridge



Flybridge Aft Deck



Flybridge Aft Deck



Flybridge Aft Deck



Cockpit



Cockpit



Cockpit



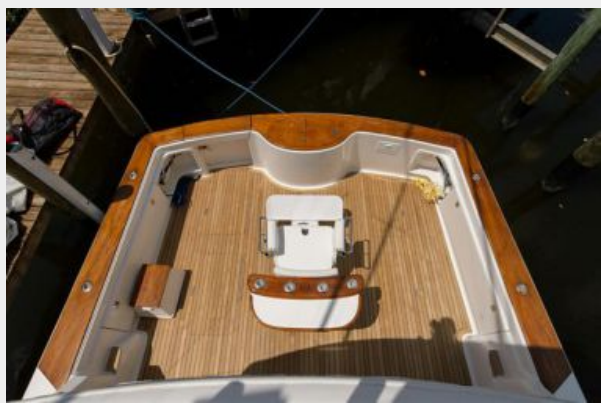
Cockpit



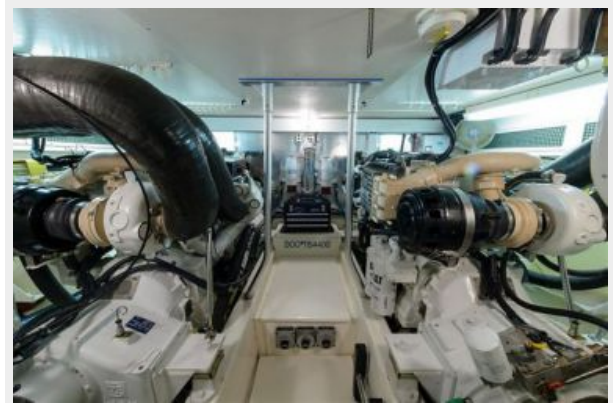
Cockpit



Cockpit



Engine Room



Engine Room



Engine Room



Engine Room



Engine Room



Engine Room



Un Believable II



Bow Profile



Stern Profile



CONTACTS

Andrey Shestakov, leading yacht broker of the sales department of Shestakov Yacht Sales Inc. Shestakov Yacht Sales Inc., the official representative of the Miami/Fort Lauderdale FL headquarters.

Contact details

Email: andrey@shestakovyachtsales.com

Web: shestakovyachtsales.com/en/

Telephones

USA: +1(954)274-4435

Office hours

Monday – Saturday: **9:00 - 21:00** EDT

Sunday: **closed**

Address



Harbour Towne Marina, 850 NE 3rd St,
STE 213, Dania, FL 33004