

FIRECRACKER — SUNSEEKER



Builder: SUNSEEKER

Year Built: 2011

Model: Motor Yacht

Price: PRICE ON APPLICATION

Location: France

LOA: 86' 11" (26.49m)

Beam: 20' 11" (6.35m)

Min Draft: 5' 7" (1.70m)

Max Draft: 5' 7" (1.70m)

Max Speed: 36 Kts. (41 MPH)

Our experienced yacht broker, Andrey Shestakov, will help you choose and buy a yacht that best suits your needs **FIRECRACKER — SUNSEEKER** from our catalogue. Presently, at Shestakov Yacht Sales Inc., we have a wide variety of yachts available on our sale's list. We also work in close contact with all the big yacht manufacturers from all over the world.

If you would like to buy a yacht **FIRECRACKER — SUNSEEKER** or would like help answering any questions concerning purchasing, selling or chartering a yacht, please call **+1(954)274-4435**

TABLE OF CONTENTS

TABLE OF CONTENTS	2
SPECIFICATIONS	3
Overview	3
Basic Information	3
Dimensions	3
Speed, Capacities and Weight	3
Accommodations	4
Hull and Deck Information	4
Engine Information	4
DETAILED INFORMATION	5
Accommodation	5
Additional	5
Vessel Description	6
Exclusions	7
Disclaimer	7
PHOTOS	8
CONTACTS	12
Contact details	12
Telephones	12
Office hours	12
Address	12

SPECIFICATIONS

Overview

The Sunseeker 84 Predator, "Firecracker" reflects Sunseeker's cutting-edge development in performance yacht design. With a sports flybridge, which is barely recognisable as another deck to onlookers, and a dining and seating area on the bow, accommodation on board this vessel is fully maximised. Below, clever design has created four spacious, ensuite cabins. Built in 2011 for an existing Sunseeker client, "Firecracker" is offers unbridled space and luxury. Fitted with Satin Oak wood throughout, complemented with white lacquer feature panels and her striking "Jet Black" hull, "Firecracker" is an excellent turn-key opportunity on the current brokerage market. With a long list of extras that include the iconic "Sports Fly", trademark "Rise and Fall Hydraulic Platform" and the indispensable "Trac Digital Fin Stabilizers", this is a Sunseeker 84 Predator that must be seen to be truly appreciated. MCA coded. Berth available by separate negotiation.

Basic Information

Category: Motor Yacht

Model Year: 2011

Year Built: 2011

Country: France

Vessel Top: Hardtop

Dimensions

LOA: 86' 11" (26.49m)

Beam: 20' 11" (6.35m)

Min Draft: 5' 7" (1.70m)

Max Draft: 5' 7" (1.70m)

Speed, Capacities and Weight

Max Speed: 36 Kts. (41 MPH)

Displacement: 131615.970414 Pounds

Water Capacity: 317.0064624 Gallons

Fuel Capacity: 1981.29039 Gallons

Accommodations

Total Berths: 8

Crew Berths: 3

Hull and Deck Information

Hull Material: Fiberglass

Hull Color: Jet Black

Engine Information

Engines: 2

Manufacturer: MTU

Model: 16V 2000 M94

Fuel Type: Diesel

DETAILED INFORMATION

Accommodation

The Sunseeker Predator 84 sleeps a total of 8 guests in 4 spacious cabins, plus 3 crew (in 2 cabins). The cabins consist of forward ensuite VIP cabin, 2 large ensuite twin guest cabins (one with sliding beds that convert to a double), and a full beam master stateroom midships comprising a comprehensively equipped ensuite bathroom and walk in wardrobe. The well laid out interior boasts great volumes and plenty of storage.

Additional

2011 Williams 385 jet tender 120 hrs full service history
 2011 Sea doo RXP 255 100 hrs full service history
 2 x KVH M9 domes sprayed in RAL white, one containing KVH SAT TV antenna with 3 decoders and channels fed to all cabins
 2.4 metre Whip Aerial for FM Radio to match VHF Aerial on Radar arch
 All aerials, antennas, scanner, spotlight and radar chair to be sprayed RAL White (9010) in lieu of standard
 All interior overhead Halogen lighting to be upgraded to LED - See separate Lighting Specification for full breakdown of lights
 Bathing Platform - Hydraulic
 Bathing Platform (650 kg maximum capacity) in lieu of standard crane and fixed platform
 Bench seat to have additional arm rests upholstered in Sunbrella 5077 Natta Antique with inset teak tops
 Bose upgrade for Aft Cockpit - 4 x Marine speakers powered by 2 x Bose SA2 amplifiers allowing for Zone control of the Saloon Bose system with the Bose PMCI remote
 Bose upgrade for Foredeck - 2 x marine speakers powered by 1 x Bose SA2 amplifier allowing for Zone control of the Saloon Bose system with the Bose PMCI remote
 Bose upgrade for optional Sports Fly - 2 x Marine Speakers powered by 1 x Bose SA2 amplifier allowing for Zone control of the Saloon Bose system with the Bose PMCI remote
 CCTV with 3 Cameras: 2 x Infra red located in the engine room plus 1 x camera located on the radar arch facing aft. Image to be displayed on Nav screens at the main helm, Fly Bridge and Crew mess
 Compass Swinging and adjustment with correction card
 Deck, superstructure and cockpit to be moulded Ral White in lieu of standard
 Foredeck bimini in Black 4128-00002
 Digital bar chart display for fuel monitoring system in lieu of standard analogue gauge
 Dining chairs to be Meridiani Kerr Tre - Light Oak with CB White leather upholstery in lieu of standard
 Dining table to be Oak, low build, stain finish with a White Glass, Polished Finish (RAL 9016) top
 DVD - Bose Lifestyle 48 DVD/CD Surround System in lieu of Standard Surround System for the Saloon
 Electric Canopy for aft cockpit in Black 4128-00002
 Flooring to be Timage Oak, satin finish (120mm plank) in lieu of standard teak
 Flybridge deck layout option with sports bridge control station, helm seat, sunbathing area & teak decking
 Foredeck bimini in Black 4128-00002
 General Ecology Nature Pure Ultrafine Water purifier for the Icemaker - with spare cartridge supplied
 Generators Upgraded to Two Kohler 28kw 50Hz with super silent sound shields in lieu of standard two Kohler 25kw 50Hz
 Helm seats to be Attwood Matrix upholstered in MBS Sisal 8714 vinyl
 Hydraulic telescopic passerelle to be mirror polished finish stainless steel in lieu of standard
 Hydraulics - Trac Star Digital fin stabiliser system providing full roll control at speeds above 13 knots and significant roll reduction while at rest or anchor (only available with shaft drive boats)
 Inset carpet in Bellissima 701 Full Moon (cut

into the wood floor) within the sofa seating area on the starboard side - sofas to stand on the Oak floor
 Isolation Transformer
 Lower window Venetian blinds to be 50mm Oak (single blind per window in lieu of standard twin blinds), upper window blinds to be 50mm White - all to have white threads and ladders
 Navigation Equipment - Raymarine E90W - 9" additional Colour display for the Sport fly console
 Oak, low build stain lacquer coffee table with CB White leather insets in lieu of standard (shape to be the same as the main body of the standard Coffee table but without the 'cross' piece or the lower tray with the stainless fiddles)
 Idromar 225lit/hr with separate remote control
 Raymarine E120W - 12.1" Widescreen Colour Radar Chartplotter with E120W - 12.1" Colour repeater on lower console & Raystar 125 GPS Diff receiver with 4kw 48" HD open array scanner in lieu of std
 Raymarine E90W - 9" additional Colour display for the Sport fly console
 Raymarine E127 hybrid touch with iPhone/ipad connectivity to the crew area
 Raymarine Ray 240E Class D-DSC - VHF Dual station in lieu of standard
 Raymarine ST70+ autopilot at main helm with a Raymarine ST70 pilot head on the sports Fly
 Raymarine ST70+ wind gauge
 Saloon Bose system with the Bose PMcII remote
 Saloon TV upgraded to 50" display (including associated changes to mechanism)
 Samsung 19" LCD TV and Alpine DVD/CD/Radio with speakers
 Seamless Transfer. A recommended extra which provides virtually seamless transfer for AV equipment when changing over between shorepower and generators plus changeover between generators by providing a supported power supply via an inverter. No longer a black out period during changeover and also helps protect sensitive AV equipment during this period
 Sofa seating to have soft foam in lieu of standard
 Stern spring cleats located on the aft edge of the hull for stern mooring purposes
 Sun pad to have transverse 'roll' design
 Sunbrella 5077 Natte Antique upholstered cushions for the area either side of the spa tub
 Timage flexible arm reading lights in lieu of standard reading lights in the Forward VIP Stateroom, in the Master Aft Stateroom
 Tinted film to side windows and sliding doors
 Twin Anchor arrangement at Bow (2 x Lewmar V8 windlass in lieu of std. 1 X 80kg anchor with 100 metres 12mm diameter galvanised chain. 1 X 50kg anchor with 60 Meters 12mm diameter galvanised chain) in lieu of standard
 Underwater lights - Aqualuma Series 6 white LED wide angle - 3 across the transom and 2 aft each side
 Wine cooler

Vessel Description

The Sunseeker 84 Predator, "Firecracker" reflects Sunseeker's cutting-edge development in performance yacht design. With a sports flybridge, which is barely recognisable as another deck to onlookers, and a dining and seating area on the bow, accommodation on board this vessel is fully maximised. Below, clever design has created four spacious, ensuite cabins. Built in 2011 for an existing Sunseeker client, "Firecracker" is offers unbridled space and luxury. Fitted with Satin Oak wood throughout, complemented with white lacquer feature panels and her striking "Jet Black" hull, "Firecracker" is an excellent turn-key opportunity on the current brokerage market. With a long list of extras that include the iconic "Sports Fly", trademark "Rise and Fall Hydraulic Platform" and the indispensable "Trac Digital Fin Stabilizers", this is a Sunseeker 84 Predator that must be seen to be truly appreciated. MCA coded. Berth available by separate negotiation.

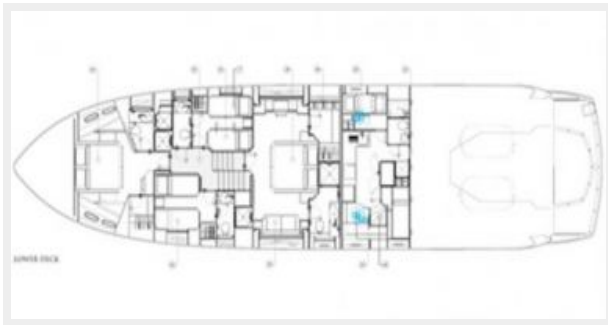
Exclusions

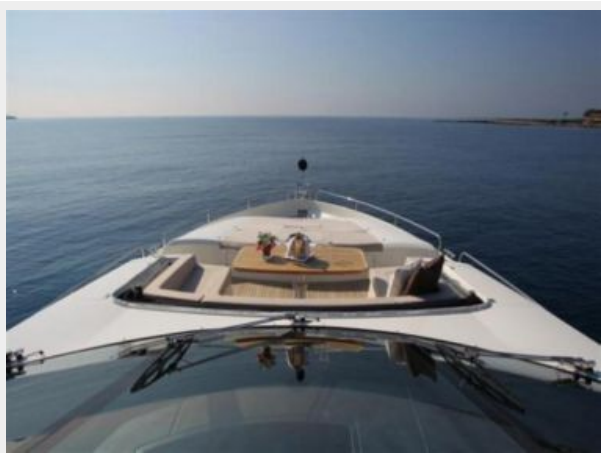
Owner's personal belongings.

Disclaimer

The Company offers the details of this vessel or yacht in good faith but cannot guarantee or warrant the accuracy of this information nor warrant the condition of the vessel. A buyer should instruct his representatives, agents, or his surveyors, to investigate such details as the buyer desires validated. This vessel or yacht is offered subject to prior sale, price change, or withdrawal without notice.

PHOTOS









CONTACTS

Andrey Shestakov, leading yacht broker of the sales department of Shestakov Yacht Sales Inc. Shestakov Yacht Sales Inc., the official representative of the Miami/Fort Lauderdale FL headquarters.

Contact details

Email: andrey@shestakovyachtsales.com

Web: shestakovyachtsales.com/en/

Telephones

USA: +1(954)274-4435

Office hours

Monday – Saturday: **9:00 - 21:00** EDT

Sunday: **closed**

Address



Harbour Towne Marina, 850 NE 3rd St,
STE 213, Dania, FL 33004