

## FIRECRACKER — SUNSEEKER



**Судостроитель:** [SUNSEEKER](#)

**Год постройки:** 2011

**Модель:** Моторная яхта

**Цена:** **ЦЕНА ЯХТЫ ПО ЗАПРОСУ**

**Местонахождение:** France

**Длина общая:** 86' 11" (26.49m)

**Ширина:** 20' 11" (6.35m)

**Мин. осадка:** 5' 7" (1.70m)

**Макс. осадка:** 5' 7" (1.70m)

**Макс. скорость:** 36 Kts. (41 MPH)

Купить **FIRECRACKER — SUNSEEKER** а также выбрать подходящую вам яхту из нашего каталога яхт вам поможет опытный яхтенный брокер Андрей Шестаков. На сегодняшний день компания **Shestakov Yacht Sales Inc.** имеет большое количество яхт в собственном списке продаж, а также тесно сотрудничает со всеми крупными яхтенными производителями по всему миру.

Для того чтобы купить яхту **FIRECRACKER — SUNSEEKER** а также проконсультироваться по любому вопросу связанному с покупкой, продажей, чартером яхт позвоните по телефону **+7(918)465-66-44**.

# ОГЛАВЛЕНИЕ

---

ОГЛАВЛЕНИЕ	2
ХАРАКТЕРИСТИКИ	3
Обзор	3
Основная информация	3
Размеры	3
Скорость, вместимость и масса	3
Размещение	4
Корпус и палуба	4
Информация о двигателе	4
ПОДРОБНОЕ ОПИСАНИЕ	5
Accommodation	5
Additional	5
Vessel Description	6
Исключения	7
Отказ от ответственности	7
ФОТОГРАФИИ	8
КОНТАКТЫ	12
Контактная информация	12
Телефоны	12
Время работы	12
Адрес	12

# ХАРАКТЕРИСТИКИ

## Обзор

The Sunseeker 84 Predator, "Firecracker" reflects Sunseeker's cutting-edge development in performance yacht design. With a sports flybridge, which is barely recognisable as another deck to onlookers, and a dining and seating area on the bow, accommodation on board this vessel is fully maximised. Below, clever design has created four spacious, ensuite cabins. Built in 2011 for an existing Sunseeker client, "Firecracker" is offers unbridled space and luxury. Fitted with Satin Oak wood throughout, complemented with white lacquer feature panels and her striking "Jet Black" hull, "Firecracker" is an excellent turn-key opportunity on the current brokerage market. With a long list of extras that include the iconic "Sports Fly", trademark "Rise and Fall Hydraulic Platform" and the indispensable "Trac Digital Fin Stabilizers", this is a Sunseeker 84 Predator that must be seen to be truly appreciated. MCA coded. Berth available by separate negotiation.

## Основная информация

**Тип судна:** Моторная яхта

**Модельный год:** 2011

**Год постройки:** 2011

**Страна:** France

**Верх:** Hardtop

## Размеры

**Длина общая:** 86' 11" (26.49m)

**Ширина:** 20' 11" (6.35m)

**Мин. осадка:** 5' 7" (1.70m)

**Макс. осадка:** 5' 7" (1.70m)

## Скорость, вместимость и масса

**Макс. скорость:** 36 Kts. (41 MPH)

**Водоизмещение:** 131615.970414 Pounds

**Вместимость воды:** 317.0064624 Gallons

**Объем топливного бака:** 1981.29039 Gallons

## Размещение

---

Всего коек: 8

Койки экипажа: 3

## Корпус и палуба

---

Материал корпуса: Fiberglass

Цвет корпуса: Jet Black

## Информация о двигателе

---

Двигатели: 2

Производитель: MTU

Модель: 16V 2000 M94

Тип топлива: Diesel

# ПОДРОБНОЕ ОПИСАНИЕ

## Accommodation

The Sunseeker Predator 84 sleeps a total of 8 guests in 4 spacious cabins, plus 3 crew (in 2 cabins). The cabins consist of forward ensuite VIP cabin, 2 large ensuite twin guest cabins (one with sliding beds that convert to a double), and a full beam master stateroom midships comprising a comprehensively equipped ensuite bathroom and walk in wardrobe. The well laid out interior boasts great volumes and plenty of storage.

## Additional

2011 Williams 385 jet tender 120 hrs full service history  
 2011 Sea doo RXP 255 100 hrs full service history  
 2 x KVH M9 domes sprayed in RAL white, one containing KVH SAT TV antenna with 3 decoders and channels fed to all cabins  
 2.4 metre Whip Aerial for FM Radio to match VHF Aerial on Radar arch  
 All aerials, antennas, scanner, spotlight and radar chair to be sprayed RAL White (9010) in lieu of standard  
 All interior overhead Halogen lighting to be upgraded to LED - See separate Lighting Specification for full breakdown of lights  
 Bathing Platform - Hydraulic Bathing Platform (650 kg maximum capacity) in lieu of standard crane and fixed platform  
 Bench seat to have additional arm rests upholstered in Sunbrella 5077 Natta Antique with inset teak tops  
 Bose upgrade for Aft Cockpit - 4 x Marine speakers powered by 2 x Bose SA2 amplifiers allowing for Zone control of the Saloon Bose system with the Bose PMCI remote  
 Bose upgrade for Foredeck - 2 x marine speakers powered by 1 x Bose SA2 amplifier allowing for Zone control of the Saloon Bose system with the Bose PMCI remote  
 Bose upgrade for optional Sports Fly - 2 x Marine Speakers powered by 1 x Bose SA2 amplifier allowing for Zone control of the Saloon Bose system with the Bose PMCI remote  
 CCTV with 3 Cameras: 2 x Infra red located in the engine room plus 1 x camera located on the radar arch facing aft. Image to be displayed on Nav screens at the main helm, Fly Bridge and Crew mess  
 Compass Swinging and adjustment with correction card  
 Deck, superstructure and cockpit to be moulded Ral White in lieu of standard  
 Foredeck bimini in Black 4128-00002  
 Digital bar chart display for fuel monitoring system in lieu of standard analogue gauge  
 Dining chairs to be Meridiani Kerr Tre - Light Oak with CB White leather upholstery in lieu of standard  
 Dining table to be Oak, low build, stain finish with a White Glass, Polished Finish (RAL 9016) top  
 DVD - Bose Lifestyle 48 DVD/CD Surround System in lieu of Standard Surround System for the Saloon  
 Electric Canopy for aft cockpit in Black 4128-00002  
 Flooring to be Timage Oak, satin finish (120mm plank) in lieu of standard teak  
 Flybridge deck layout option with sports bridge control station, helm seat, sunbathing area & teak decking  
 Foredeck bimini in Black 4128-00002  
 General Ecology Nature Pure Ultrafine Water purifier for the Icemaker - with spare cartridge supplied  
 Generators Upgraded to Two Kohler 28kw 50Hz with super silent sound shields in lieu of standard two Kohler 25kw 50Hz  
 Helm seats to be Attwood Matrix upholstered in MBS Sisal 8714 vinyl  
 Hydraulic telescopic passerelle to be mirror polished finish stainless steel in lieu of standard  
 Hydraulics - Trac Star Digital fin stabiliser system providing full roll control at speeds above 13 knots and significant roll reduction while at rest or anchor (only available with shaft drive boats)  
 Inset carpet in Bellissima 701 Full Moon (cut

into the wood floor) within the sofa seating area on the starboard side - sofas to stand on the Oak floor Isolation Transformer Lower window Venetian blinds to be 50mm Oak (single blind per window in lieu of standard twin blinds), upper window blinds to be 50mm White - all to have white threads and ladders Navigation Equipment - Raymarine E90W - 9" additional Colour display for the Sport fly console Oak, low build stain lacquer coffee table with CB White leather insets in lieu of standard (shape to be the same as the main body of the standard Coffee table but without the 'cross' piece or the lower tray with the stainless fiddles) Idromar 225lit/hr with separate remote control Raymarine E120W - 12.1" Widescreen Colour Radar Chartplotter with E120W - 12.1" Colour repeater on lower console & Raystar 125 GPS Diff receiver with 4kw 48" HD open array scanner in lieu of std Raymarine E90W - 9" additional Colour display for the Sport fly console Raymarine E127 hybrid touch with iPhone/ipad connectivity to the crew area Raymarine Ray 240E Class D-DSC - VHF Dual station in lieu of standard Raymarine ST70+ autopilot at main helm with a Raymarine ST70 pilot head on the sports Fly Raymarine ST70+ wind gauge Saloon Bose system with the Bose PMCII remote Saloon TV upgraded to 50" display (including associated changes to mechanism) Samsung 19" LCD TV and Alpine DVD/CD/Radio with speakers Seamless Transfer. A recommended extra which provides virtually seamless transfer for AV equipment when changing over between shorepower and generators plus changeover between generators by providing a supported power supply via an inverter. No longer a black out period during changeover and also helps protect sensitive AV equipment during this period Sofa seating to have soft foam in lieu of standard Stern spring cleats located on the aft edge of the hull for stern mooring purposes Sun pad to have transverse 'roll' design Sunbrella 5077 Natta Antique upholstered cushions for the area either side of the spa tub Timage flexible arm reading lights in lieu of standard reading lights in the Forward VIP Stateroom, in the Master Aft Stateroom Tinted film to side windows and sliding doors Twin Anchor arrangement at Bow (2 x Lewmar V8 windlass in lieu of std. 1 X 80kg anchor with 100 metres 12mm diameter galvanised chain. 1 X 50kg anchor with 60 Meters 12mm diameter galvanised chain) in lieu of standard Underwater lights - Aqualuma Series 6 white LED wide angle - 3 across the transom and 2 aft each side Wine cooler

## Vessel Description

The Sunseeker 84 Predator, "Firecracker" reflects Sunseeker's cutting-edge development in performance yacht design. With a sports flybridge, which is barely recognisable as another deck to onlookers, and a dining and seating area on the bow, accommodation on board this vessel is fully maximised. Below, clever design has created four spacious, ensuite cabins. Built in 2011 for an existing Sunseeker client, "Firecracker" offers unbridled space and luxury. Fitted with Satin Oak wood throughout, complemented with white lacquer feature panels and her striking "Jet Black" hull, "Firecracker" is an excellent turn-key opportunity on the current brokerage market. With a long list of extras that include the iconic "Sports Fly", trademark "Rise and Fall Hydraulic Platform" and the indispensable "Trac Digital Fin Stabilizers", this is a Sunseeker 84 Predator that must be seen to be truly appreciated. MCA coded. Berth available by separate negotiation.

## Исключения

---

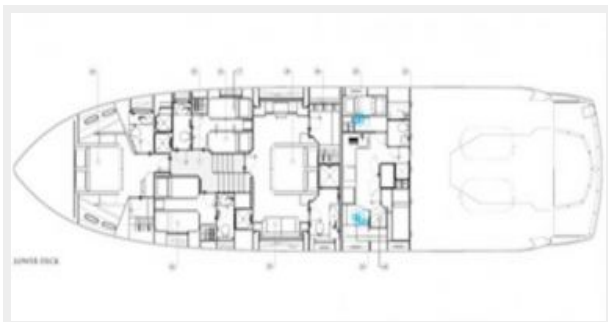
При продаже яхты исключаются личные вещи владельца.

## Отказ от ответственности

---

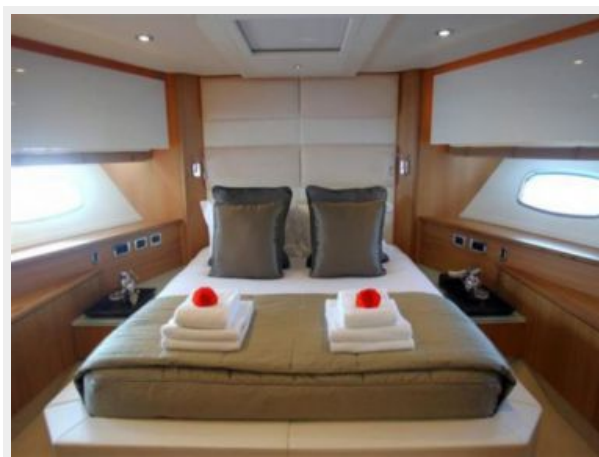
Компания предоставляет описание судна или яхты добросовестно, но не может гарантировать точность этой информации, а также не ручается за техническое состояние. Покупатель должен проинструктировать своих агентов или оценщиков исследовать представленную информацию более подробно, по собственному желанию. Продажа судна или яхты, изменение цены или снятие с продажи будет происходить без предварительного уведомления.

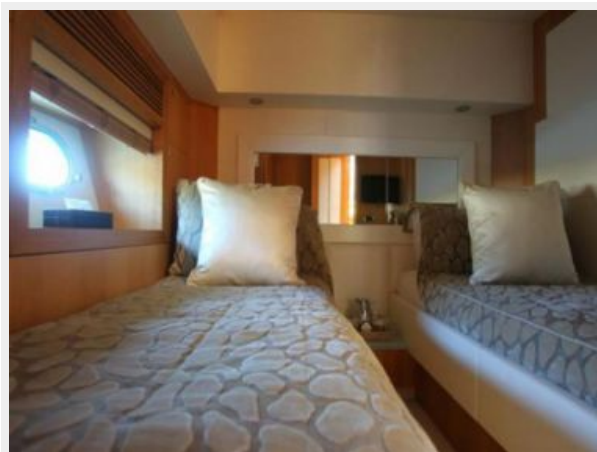
# ФОТОГРАФИИ











# КОНТАКТЫ

---

Андрей Шестаков (Andrey Shestakov) – ведущий яхтенный брокер отдела продаж яхт и судов компании Shestakov Yacht Sales Inc. Официальный представитель Shestakov Yacht Sales Inc. для русскоговорящих клиентов в центральном офисе компании в Майами/Форт Лодердейл/Флорида/США.

## Контактная информация

---

Email: [andrey@shestakovyachtsales.com](mailto:andrey@shestakovyachtsales.com)

Web: [shestakovyachtsales.com](http://shestakovyachtsales.com)

## Телефоны

---

Краснодарский край: **+7(918)465-66-44**

США, Майами, Флорида: **+1(954)274-4435**

## Время работы

---

Понедельник – Суббота: **9:00 - 21:00**  
EDT

Воскресенье: **Закрето**

## Адрес

---



Harbour Towne Marina, 850 NE 3rd St,  
STE 213, Dania, FL 33004