

IKANDI — SUNSEEKER



Builder: SUNSEEKER

Year Built: 2008

Model: Motor Yacht

Price: PRICE ON APPLICATION

Location: Gibraltar

LOA: 64' 10" (19.74m)

Beam: 19' 6" (5.94m)

Min Draft: 5' 9" (1.73m)

Max Draft: 5' 9" (1.73m)

Max Speed: 33 Kts. (38 MPH)

Our experienced yacht broker, Andrey Shestakov, will help you choose and buy a yacht that best suits your needs **IKANDI — SUNSEEKER** from our catalogue. Presently, at Shestakov Yacht Sales Inc., we have a wide variety of yachts available on our sale's list. We also work in close contact with all the big yacht manufacturers from all over the world.

If you would like to buy a yacht **IKANDI — SUNSEEKER** or would like help answering any questions concerning purchasing, selling or chartering a yacht, please call **+1(954)274-4435**

TABLE OF CONTENTS

TABLE OF CONTENTS	2
SPECIFICATIONS	3
Overview	3
Basic Information	3
Dimensions	3
Speed, Capacities and Weight	3
Accommodations	3
Hull and Deck Information	4
Engine Information	4
DETAILED INFORMATION	5
Accommodation	5
Additional	5
Vessel Description	5
Exclusions	6
Disclaimer	6
PHOTOS	7
CONTACTS	10
Contact details	10
Telephones	10
Office hours	10
Address	10

SPECIFICATIONS

Overview

A new and perfect opportunity to acquire a pristine and fully loaded Sunseeker Predator 62. Fitted with twin MAN 1100 CRM engines with low hours, she is in as new condition. No expense has been spared with equipping this vessel to the highest standards. Extras include 3 besanzoni helm seats, 40" rise and fall TV system and a Williams turbo jet tender. Gibraltar registered, EU VAT and Spanish Matriculation paid. The owner is keen to sell, PART EXCHANGE for land or property will be seriously considered. Please contact us to arrange a viewing!

Basic Information

Category: Motor Yacht

Model Year: 2008

Year Built: 2008

Country: Gibraltar

Vessel Top: Hardtop

Dimensions

LOA: 64' 10" (19.74m)

Beam: 19' 6" (5.94m)

Min Draft: 5' 9" (1.73m)

Max Draft: 5' 9" (1.73m)

Speed, Capacities and Weight

Max Speed: 33 Kts. (38 MPH)

Displacement: 63934.05598 Pounds

Water Capacity: 184.9204364 Gallons

Fuel Capacity: 766.0989508 Gallons

Accommodations

Total Berths: 6

Hull and Deck Information

Hull Material: Other

Hull Color: White hull with navy hull band & navy boot top stripe

Engine Information

Engines: 2

Manufacturer: MAN

Model: 1100 CRM

Fuel Type: Diesel

DETAILED INFORMATION

Accommodation

3 cabins to sleep 6 guests. Accommodation comprises of a Full beam master cabin aft with private ensuite, VIP guest cabin forward with private access to day head, Guest cabin to starboard with Pullman bunks and Lower saloon with comprehensive galley opposite. The Deck saloon boasts a spacious cockpit aft.

Additional

12 Volt cigar socket in lieu of the standard 12 Volt socket
 2.4 metre Whip Aerial for FM Radio to match VHF Aerial on Radar arch - Aerials to be mounted in pairs
 24v lighting inside the garage with switch
 3M Tinted Mirrored Film for Hard Top Glass Roof
 Air conditioning/climate throughout
 Alpine Cockpit speaker system upgrade
 Auto Anchor Chain Counter
 Bose Lifestyle 48 DVD/CD Surround System in lieu of Standard Surround System
 Bow Thruster - Sleipner SP155TCi-24V - 10.7hp
 Burglar Alarm - Remote controlled microwave alarm system (DSM 200E)
 Chart / Navigation courtesy Light on flexible arm fitted next to Chart storage area
 Chocks on platform for Tender for owners Williams 325
 Compass Swinging and adjustment with correction card
 Diesel FuelMag conditioning system for engines FM1500 and generator FM500
 Dinghy Inflator & socket 12 volt
 Electrically operated side opening window at the helm
 Extra 30 mtrs 10mm Anchor Chain
 Fender Holders fitted to pulpit rail port and stbd (for 6 fenders).
 Fresh water Deck wash with outlets fwd & aft including deck wash hose kit
 Generator Upgraded to Kohler 13kw 50Hz (13EFOZD) in lieu of standard
 Glendinning Cablemaster - 1 x power feed and recovery of shorepower 220V AC cable
 Infra-red wide angle camera fitted in the engine room and linked to the Raymarine displays
 Liferaft 8 Man Canister
 Low level white LED side deck lights 8 per side
 KVH Sat TV system
 Passerelle Raymarine Autopilot system ST6002+ in lieu of standard
 Raymarine E120 -12.1" additional Colour display
 Raymarine E120 -12.1" Colour Radar plotter with Raystar 125 GPS Diff receiver and 4kw 48" open scanner in lieu of std radar
 Raymarine Ray 240E Class D-DSC - VHF in lieu of standard
 Raymarine ST60 Depth system in lieu of Simrad IS12
 Rear bimini Rexroth portable engine controls on wandering lead - Socket to be fitted above the stbd cockpit speaker
 Rise and Fall TV System
 Sanshin Twin Beam remote controlled Searchlight HR-1012
 Stainless steel hand rails either side of the hard top opening. Owner will use the starboard hand rail to hold onto when standing on the helm seat
 Stern Thruster - Sleipner SP155TCi-24V - 10.7hp
 Teak Decking
 Upgraded TV & DVD x 5
 Washer/Dryer in locker under companionway steps
 Watersports equipment
 Williams turbo jet tender

Vessel Description

A new and perfect opportunity to acquire a pristine and fully loaded Sunseeker Predator 62. Fitted with twin MAN 1100 CRM engines with low hours, she is in as new condition. No expense

has been spared with equipping this vessel to the highest standards. Extras include 3 besanzoni helm seats, 40" rise and fall TV system and a Williams turbo jet tender. Gibraltar registered, EU VAT and Spanish Matriculation paid. The owner is keen to sell, PART EXCHANGE for land or property will be seriously considered. Please contact us to arrange a viewing!

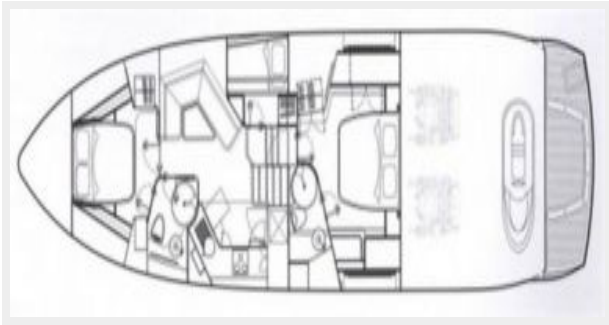
Exclusions

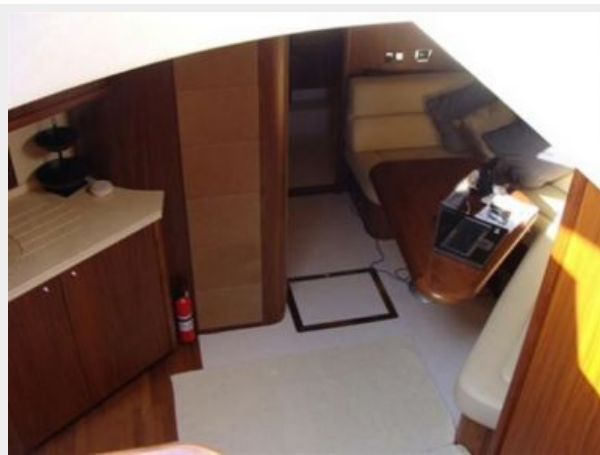
Owner's personal belongings.

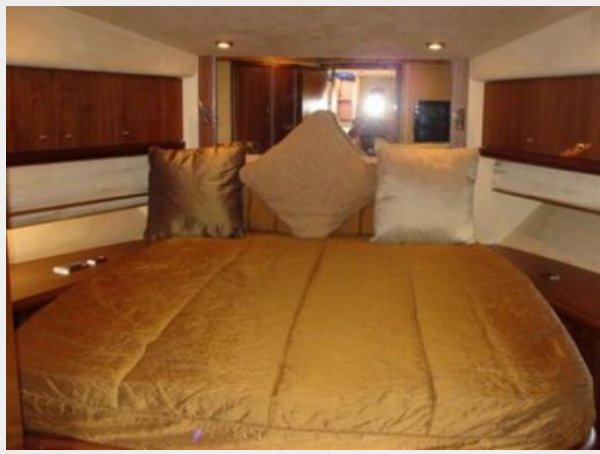
Disclaimer

The Company offers the details of this vessel or yacht in good faith but cannot guarantee or warrant the accuracy of this information nor warrant the condition of the vessel. A buyer should instruct his representatives, agents, or his surveyors, to investigate such details as the buyer desires validated. This vessel or yacht is offered subject to prior sale, price change, or withdrawal without notice.

PHOTOS







CONTACTS

Andrey Shestakov, leading yacht broker of the sales department of Shestakov Yacht Sales Inc. Shestakov Yacht Sales Inc., the official representative of the Miami/Fort Lauderdale FL headquarters.

Contact details

Email: andrey@shestakovyachtsales.com

Web: shestakovyachtsales.com/en/

Telephones

USA: +1(954)274-4435

Office hours

Monday – Saturday: **9:00 - 21:00** EDT

Sunday: **closed**

Address



Harbour Towne Marina, 850 NE 3rd St,
STE 213, Dania, FL 33004