

TEASE — DOMINATOR



Builder: DOMINATOR

Year Built: 2006

Model: Motor Yacht

Price: PRICE ON APPLICATION

Location: Italy

LOA: 64' 10" (19.76m)

Beam: 16' 10" (5.11m)

Min Draft: 5' 0" (1.50m)

Max Draft: 5' 0" (1.50m)

Max Speed: 32 Kts. (37 MPH)

Our experienced yacht broker, Andrey Shestakov, will help you choose and buy a yacht that best suits your needs **TEASE — DOMINATOR** from our catalogue. Presently, at Shestakov Yacht Sales Inc., we have a wide variety of yachts available on our sale's list. We also work in close contact with all the big yacht manufacturers from all over the world.

If you would like to buy a yacht **TEASE — DOMINATOR** or would like help answering any questions concerning purchasing, selling or chartering a yacht, please call **+1(954)274-4435**

TABLE OF CONTENTS

TABLE OF CONTENTS	2
SPECIFICATIONS	3
Overview	3
Basic Information	3
Dimensions	3
Speed, Capacities and Weight	3
Accommodations	3
Hull and Deck Information	3
Engine Information	4
DETAILED INFORMATION	5
Accommodation	5
Additional	5
Vessel Description	5
Exclusions	6
Disclaimer	6
PHOTOS	7
CONTACTS	9
Contact details	9
Telephones	9
Office hours	9
Address	9

SPECIFICATIONS

Overview

This is a 2006 Dominator 62S For Sale. She is lying Northern Coast of Italy. "TEASE" is a fantastic boat that boasts a very pleasant specification. At this price, she is great value for money, especially with her on-going list of additional extras. Meticulously cared for by a maintenance contractor, the boat looks very attractive. Fully MCA compliant she can also offer the opportunity for charter as well. All viewings and offers welcome, please contact us for more information.

Basic Information

Category: Motor Yacht

Model Year: 2006

Year Built: 2006

Country: Italy

Dimensions

LOA: 64' 10" (19.76m)

Beam: 16' 10" (5.11m)

Min Draft: 5' 0" (1.50m)

Max Draft: 5' 0" (1.50m)

Speed, Capacities and Weight

Max Speed: 32 Kts. (37 MPH)

Displacement: 74000.36286292 Pounds

Water Capacity: 264.172052 Gallons

Fuel Capacity: 956.30282824 Gallons

Accommodations

Total Berths: 6

Hull and Deck Information

Hull Material: Fiberglass

Hull Color: White hull

Engine Information

Engines: 2

Manufacturer: MAN

Model: V10 CRM

Fuel Type: Diesel

DETAILED INFORMATION

Accommodation

Comfortable and spacious throughout the arrangement of the internal layout. She has been used for charter until 2013. With certain effect is the full width of the vessel felt in the Owner's Cabin, which gives the impression of being aboard a yacht with much larger dimensions. "TEASE" has been successfully used for charter with a British MCA commercial status registration.

Additional

Additional engine control station in Cockpit (Start-Stop Engines/Bow-Stern thrusters/Anchor winch) Additional Fridge in Crew Cabin Aft Cockpit Teak decking removable Tender chocks on Bathing Platform Battery System for service - engine - and start circuit (maintenance free gel battery) Bimini top Bose 3.2.1 Home Cinema Dolby Digital System Bulkhead Door Crew Cabin accessible from Engine Room CD/DVD in Saloon & Master Cabin Double Racor Fuel Filters (two per engine) Dummy Dome 60 Electric Blinds in Salon and Owner's Cabin Emergency Remote Control MAN Engines Engines serviced Spring 2015 Flatscreen TV LC 20 in VIP - Guest Cabin Flatscreen TV LC 27 + LC 20 with hi-lo system in Saloon and Owner's Cabin Frigobar in Owner's Cabin Full polish, & prop speed applied to propellers High Performance Bow- and Stern thruster (200 kp) from Sidepower with separate Battery Hydraulic swim platform at the transom Icemaker Intercom connecting owner-VIP- guest-salon-crew cabin Interior Deluxe Joystick Control in Pilothouse and Flybridge KVH SAT TV antenna 6 New anodes (April 2015) New antifouling (May 2015) + Propspeed treatment to propellers Owner's Bathroom in bi-color Marble Parquet Floor in Dining Area and Galley Pilot Seat (hydr. adjustable) in Pilothouse Raymarine Color Radar / GPS Plotter /Depthfinder / Video/High Brilliant in Pilothouse and Flybridge Safety Control panel for Portholes and Hatches indicating whether open or closed Shower unit (spa effect) in Owner's Bathroom Spare Propellers Special effect lighting system with leds - 8 colors to select outside - inside Stereo CD in VIP Cabin Teak side decks Universal SAT box for TV in Saloon – Owner's Cabin Upgraded Air-conditioning 60.000 BTU Washer Dryer in Crew Cabin Williams 325 Jet Tender (serviced Spring 2015) Wind Indicator in Pilothouse and Flybridge

Vessel Description

This is a 2006 Dominator 62S For Sale. She is lying Northern Coast of Italy. "TEASE" is a fantastic boat that boasts a very pleasant specification. At this price, she is great value for money, especially with her on-going list of additional extras. Meticulously cared for by a maintenance contractor, the boat looks very attractive. Fully MCA compliant she can also offer the opportunity for charter as well. All viewings and offers welcome, please contact us for more information.

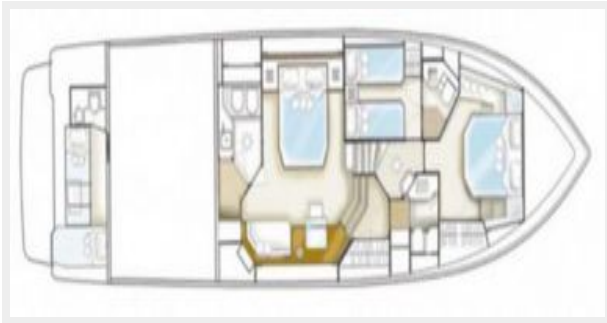
Exclusions

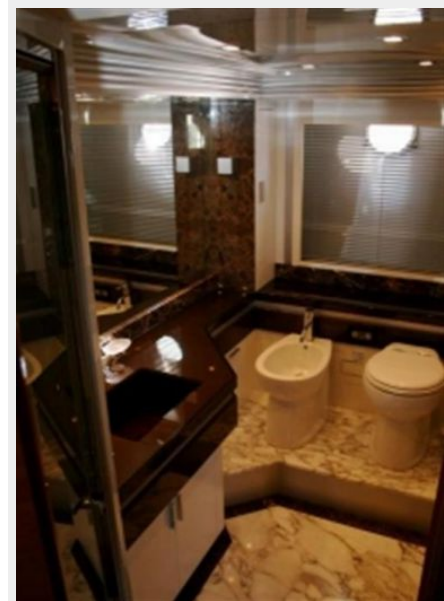
Owner's personal belongings.

Disclaimer

The Company offers the details of this vessel or yacht in good faith but cannot guarantee or warrant the accuracy of this information nor warrant the condition of the vessel. A buyer should instruct his representatives, agents, or his surveyors, to investigate such details as the buyer desires validated. This vessel or yacht is offered subject to prior sale, price change, or withdrawal without notice.

PHOTOS





CONTACTS

Andrey Shestakov, leading yacht broker of the sales department of Shestakov Yacht Sales Inc. Shestakov Yacht Sales Inc., the official representative of the Miami/Fort Lauderdale FL headquarters.

Contact details

Email: andrey@shestakovyachtsales.com

Web: shestakovyachtsales.com/en/

Telephones

USA: +1(954)274-4435

Office hours

Monday – Saturday: **9:00 - 21:00** EDT

Sunday: **closed**

Address



Harbour Towne Marina, 850 NE 3rd St,
STE 213, Dania, FL 33004