

## SAUNTERER — SUNSEEKER



**Builder:** SUNSEEKER

**Year Built:** 2010

**Model:** Motor Yacht

**Price:** PRICE ON APPLICATION

**Location:** Spain

**LOA:** 58' 10" (17.93m)

**Beam:** 15' 0" (4.57m)

**Min Draft:** 4' 6" (1.37m)

**Max Draft:** 4' 6" (1.37m)

**Max Speed:** 34 Kts. (39 MPH)

Our experienced yacht broker, Andrey Shestakov, will help you choose and buy a yacht that best suits your needs **SAUNTERER — SUNSEEKER** from our catalogue. Presently, at Shestakov Yacht Sales Inc., we have a wide variety of yachts available on our sale's list. We also work in close contact with all the big yacht manufacturers from all over the world.

If you would like to buy a yacht **SAUNTERER — SUNSEEKER** or would like help answering any questions concerning purchasing, selling or chartering a yacht, please call **+1(954)274-4435**

---

# TABLE OF CONTENTS

---

TABLE OF CONTENTS	2
SPECIFICATIONS	3
Overview	3
Basic Information	3
Dimensions	3
Speed, Capacities and Weight	3
Accommodations	3
Hull and Deck Information	4
Engine Information	4
DETAILED INFORMATION	5
Accommodation	5
Additional	5
Vessel Description	5
Exclusions	6
Disclaimer	6
PHOTOS	7
CONTACTS	12
Contact details	12
Telephones	12
Office hours	12
Address	12

---

# SPECIFICATIONS

---

## Overview

---

Extremely low hours and a stunning specification make this a classic example of the Sunseeker Predator 54. With a large cockpit area and spacious cabin/living area below decks, this vessel is not to be missed. The interior is very special yet simple in its execution. It has been looked after by our service arm of Sunseeker in Mallorca since it was delivered. The owner is keen to sell and will consider all offers! Viewings are encouraged, so please contact us for more detailed information.

## Basic Information

---

**Category:** Motor Yacht

**Model Year:** 2010

**Year Built:** 2010

**Country:** Spain

**Vessel Top:** Hardtop

## Dimensions

---

**LOA:** 58' 10" (17.93m)

**Beam:** 15' 0" (4.57m)

**Min Draft:** 4' 6" (1.37m)

**Max Draft:** 4' 6" (1.37m)

## Speed, Capacities and Weight

---

**Max Speed:** 34 Kts. (39 MPH)

**Displacement:** 53131.405142 Pounds

**Water Capacity:** 127.066757012 Gallons

**Fuel Capacity:** 565.32819128 Gallons

## Accommodations

---

**Total Berths:** 6

---

## Hull and Deck Information

---

**Hull Material:** GRP

**Hull Color:** Navy Blue Hull band with Navy Blue waterline

---

## Engine Information

---

**Engines:** 2

**Manufacturer:** MAN

**Model:** 800 CRM

**Fuel Type:** Diesel

## DETAILED INFORMATION

### Accommodation

This model's impressive cockpit with wetbar, including ice maker, electric griddle, seating area with teak table top and its large sunbathing area aft, make it the ideal Med style boat. Her below deck area is equally as impressive. The large owner's cabin forward has its own private ensuite and two additional guest cabins boast a shower/toilet combination. The beautifully appointed open plan lounge/galley area makes this a truly live-on boat with serious family and friends cruising in mind. With its own garage for a jet tender to be stowed out of sight, this boat really does cover all bases.

### Additional

Additional front loading refrigerator  
 Air Conditioning - 1 x 8000 BTU 1 x 10000 BTU 1 x 12000 BTU 1 x 16000 BTU  
 Alpine - additional pair of Alpine marine 2 way cockpit speakers  
 Anchor chain - additional 30 mtrs of 10mm  
 Bow sunbathing cushions with folding back-rests  
 Bow Thruster - Sleipner Side Power 8hp  
 Carbon fibre effect console panels  
 Cleats - Extra pair 10" mooring cleats fitted to the aft edge of the hull band below the hull/deck joint  
 Cockpit ceramic electric griddle  
 Deck Wash - fresh water with outlets fwd & aft including deck wash hose kit  
 Decolav 1228 stainless steel basins  
 Dinghy Inflator & socket 12 volt  
 Electric canopy for aft cockpit  
 Generator upgrade to Kohler 9KW 50Hz (9EFOZD) in lieu of std 4KW  
 Hard top  
 Hydraulic lifting platform  
 Hydraulic telescopic gangway 3.5m with teak walkway  
 Ice maker fitted in cockpit  
 In-fill board and mattress to be supplied to transform the two beds into one  
 Low level LED side deck lights 8 per side  
 Raymarine E-120 12" Colour radar/plotter with Raystar 125 Diff GPS and 4KW 24" radome  
 Raymarine Ray 240E D-DSC VHF  
 Raymarine ST60+ Depth system  
 Raymarine ST6002+ autopilot  
 Roman blinds in guest cabin  
 Roman blinds in saloon  
 Safe - 2 brick with key lock  
 Saloon table to be lowered to form an occasional bed with infill cushions on an electric telescopic two stage leg  
 Shipping cover  
 Sky decoder in the saloon connected to all TVs  
 Socket - additional AC 220v double  
 Spare propellers - pair - supplied loose only  
 Stainless steel galley work top  
 Stern docking winches - Lewmar C3 fitted port and starboard  
 Sunbrella canvas upgrade for cockpit and bow sunbathing cushions  
 Teak cockpit decking  
 Teak cockpit table  
 Teak side decks  
 Tender recovery roller system  
 Underwater lights - Aqualuma white LED wide angle x 4  
 Venetian blinds throughout  
 Washer/dryer fitted in enclosed cabinet in starboard cabin  
 Water maker Idromar MC1J  
 Water purifier for ice maker - General Ecology Ultrafine in-line system with spare cartridge  
 Wenge bed base fiddles in lieu of soft bolster  
 Wenge lacquered wood on the forward and aft bathroom work tops  
 Wenge natural finish 120mm wide plank cabin stair treads  
 Wenge natural finish flooring in 120mm wide plank  
 Wenge wood lacquer cabinetry for the bar and audio cabinet  
 Winch - Lewmar anchor winch upgrade from V3GD-24v to V4GD-24v

### Vessel Description

Extremely low hours and a stunning specification make this a classic example of the Sunseeker Predator 54. With a large cockpit area and spacious cabin/living area below decks, this vessel is not to be missed. The interior is very special yet simple in its execution. It has been looked after by our service arm of Sunseeker in Mallorca since it was delivered. The owner is keen to sell and will consider all offers! Viewings are encouraged, so please contact us for more detailed information.

## Exclusions

---

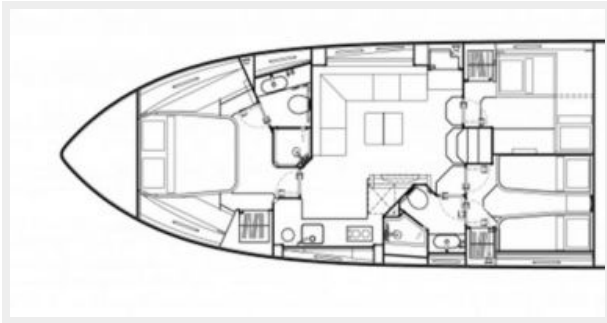
Owner's personal belongings.

## Disclaimer

---

The Company offers the details of this vessel or yacht in good faith but cannot guarantee or warrant the accuracy of this information nor warrant the condition of the vessel. A buyer should instruct his representatives, agents, or his surveyors, to investigate such details as the buyer desires validated. This vessel or yacht is offered subject to prior sale, price change, or withdrawal without notice.

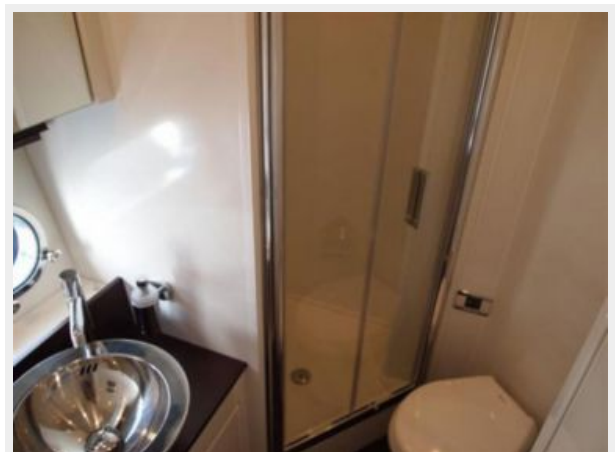
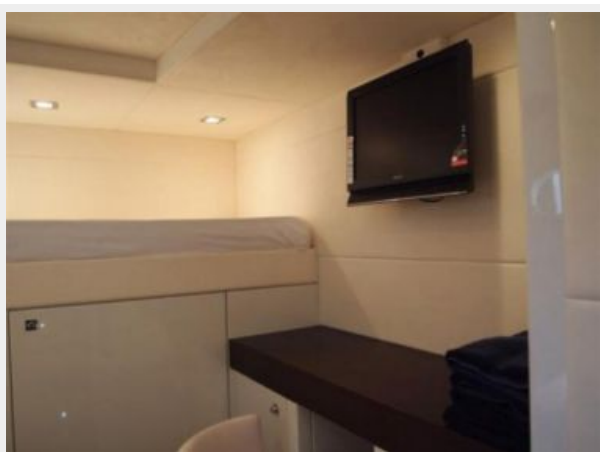
# PHOTOS













---

# CONTACTS

---

Andrey Shestakov, leading yacht broker of the sales department of Shestakov Yacht Sales Inc. Shestakov Yacht Sales Inc., the official representative of the Miami/Fort Lauderdale FL headquarters.

---

## Contact details

---

Email: [andrey@shestakovyachtsales.com](mailto:andrey@shestakovyachtsales.com)

Web: [shestakovyachtsales.com/en/](http://shestakovyachtsales.com/en/)

---

## Telephones

---

USA: +1(954)274-4435

---

## Office hours

---

Monday – Saturday: **9:00 - 21:00** EDT

Sunday: **closed**

---

## Address

---



Harbour Towne Marina, 850 NE 3rd St,  
STE 213, Dania, FL 33004