

## LIBERTY — SUNSEEKER



**Builder:** SUNSEEKER

**Year Built:** 2009

**Model:** Motor Yacht

**Price:** PRICE ON APPLICATION

**Location:** United Arab Emirates

**LOA:** 64' 5" (19.61m)

**Beam:** 16' 5" (5.00m)

**Min Draft:** 5' 0" (1.50m)

**Max Draft:** 5' 0" (1.50m)

**Max Speed:** 32 Kts. (37 MPH)

Our experienced yacht broker, Andrey Shestakov, will help you choose and buy a yacht that best suits your needs **LIBERTY — SUNSEEKER** from our catalogue. Presently, at Shestakov Yacht Sales Inc., we have a wide variety of yachts available on our sale's list. We also work in close contact with all the big yacht manufacturers from all over the world.

If you would like to buy a yacht **LIBERTY — SUNSEEKER** or would like help answering any questions concerning purchasing, selling or chartering a yacht, please call **+1(954)274-4435**

---

# TABLE OF CONTENTS

---

TABLE OF CONTENTS	2
SPECIFICATIONS	3
Overview	3
Basic Information	3
Dimensions	3
Speed, Capacities and Weight	3
Accommodations	3
Hull and Deck Information	3
Engine Information	4
DETAILED INFORMATION	5
Accommodation	5
Additional	5
Vessel Description	5
Exclusions	6
Disclaimer	6
PHOTOS	7
CONTACTS	9
Contact details	9
Telephones	9
Office hours	9
Address	9

---

# SPECIFICATIONS

---

## Overview

---

This is a 2009 Sunseeker Manhattan that has been barely used since purchase, Fitted with twin MAN 900 CRM engines and very low hours she is ready to go for the season. She boasts a very high specification and has been captain maintained since new. All viewings and offers are welcome, please contact us for more information. She will not disappoint!

## Basic Information

---

**Category:** Motor Yacht

**Model Year:** 2009

**Year Built:** 2009

**Country:** United Arab Emirates

## Dimensions

---

**LOA:** 64' 5" (19.61m)

**Beam:** 16' 5" (5.00m)

**Min Draft:** 5' 0" (1.50m)

**Max Draft:** 5' 0" (1.50m)

## Speed, Capacities and Weight

---

**Max Speed:** 32 Kts. (37 MPH)

**Displacement:** 70106.999316 Pounds

**Water Capacity:** 221.90452368 Gallons

**Fuel Capacity:** 766.0989508 Gallons

## Accommodations

---

**Total Berths:** 6

**Crew Berths:** 2

## Hull and Deck Information

---

**Hull Material:** GRP

**Hull Color:** Navy blue hull to waterline with white waterline stripe

## Engine Information

---

**Engines:** 2

**Manufacturer:** MAN

**Model:** 900 CRM

**Fuel Type:** Diesel

## DETAILED INFORMATION

### Accommodation

A popular mid-range option, the Manhattan 60 provides pace and space in a craft that family and friends can operate comfortably on their own. But if a crew is required a neat aft cabin with full facilities for two may be specified. Alternatively this space can be used as a private cabin to boost guest sleeping accommodation to eight or as a workshop cum laundry room and store room, adding to the cruising potential of this capable flybridge model.

### Additional

AC shorepower/battery charger  
 Air conditioning tropical spec  
 Alpine DVD/CD/MP3/Radio tuners  
 DVA9861Ri linked to cabin TVs  
 Antifouling in Black  
 Automatic bilge pumps  
 Automatic fire extinguishers  
 Bimini Top in Navy Blue canvas with Stainless steel frame work  
 Bose Lifestyle 48 DVD/CD Surround System in lieu of Standard Surround System  
 Bow thruster  
 Ceramic hob  
 Chocks on Platform for Tender Avon Jet 320DL  
 Demisters  
 Diesel FuelMag conditioning system for engines FM1500 and generator FM500  
 Dishwasher - Bosch 220V SRV43 M03 GB  
 Slimline  
 Electric BBQ Grill - Gaganeau lava coal  
 Electric cooling unit for cool box  
 Electric freezer and refrigerator  
 Electric winch with bow roller, flybridge and cockpit controls  
 Flatscreen televisions in all cabins  
 Flybridge seats, wet bar cover and lower cockpit seat covers in Navy blue canvas  
 Free standing Coffee Table in lieu of dining table  
 Fresh water Deck wash with outlets fwd & aft including deck wash hose kit  
 General Ecology Nature Pure Ultrafine Water purifier for the Icemaker - with spare cartridge supplied  
 Generator Upgraded to Kohler 17kw 50Hz (17EFOZD) in lieu of standard  
 Hydraulic lifting platform  
 Hydraulic steering  
 Lewmar Anchor winch upgrade from V4GD-24V to V5GD-24V  
 Low level Blue LED side deck lights 8 per side  
 Raymarine Autopilot system ST6002+ Dual station in lieu of standard  
 Raymarine E120 -12.1" Colour Radar Chartplotter on lower console with E120 -12.1" Colour repeater on fly console & Raystar 125 GPS Diff receiver with 4kw 48" open scanner in lieu of std  
 Raymarine Ray 240E Class D-DSC - VHF Dual station in lieu of standard  
 Raymarine ST60+ Speed and Depth system in lieu of Simrad IS15  
 Sanshin Twin Beam remote controlled Searchlight HR-1012 dual station control in lieu of std  
 Side opening helm door  
 Sliding cockpit door to aft cockpit  
 Spare Lewmar 20kg anchor  
 Teak bathing platform and steps, cockpit floor and side decks  
 Teak cockpit table with adjustable legs so that it will lower to form a sun-lounger with cushion  
 Trim tabs  
 Vacuum toilets with holding tank  
 Washer/Dryer fitted in enclosed cabinet  
 Water Maker HRO Seafari SFM 700-1 (2385 lts/day) including commercial pre filter, freshwater flush and oil/water separator  
 Wine cooler Frigomar F125-1-220v fitted behind a walnut lacquer door

### Vessel Description

This is a 2009 Sunseeker Manhattan that has been barely used since purchase, Fitted with twin MAN 900 CRM engines and very low hours she is ready to go for the season. She boasts a very

---

high specification and has been captain maintained since new. All viewings and offers are welcome, please contact us for more information. She will not disappoint!

## Exclusions

---

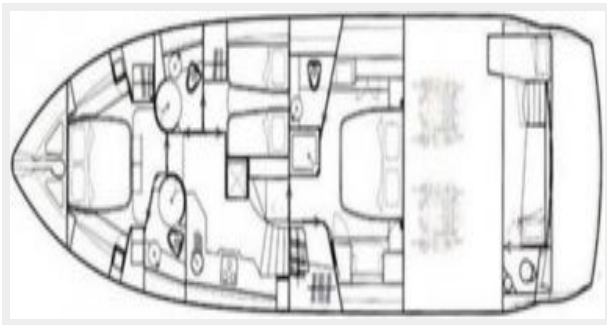
Owner's personal belongings.

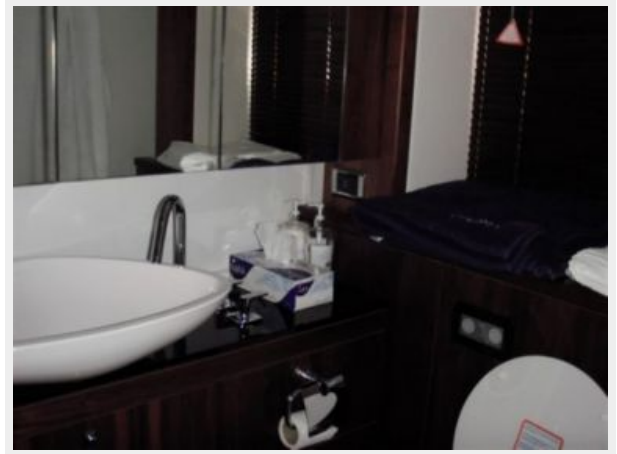
## Disclaimer

---

The Company offers the details of this vessel or yacht in good faith but cannot guarantee or warrant the accuracy of this information nor warrant the condition of the vessel. A buyer should instruct his representatives, agents, or his surveyors, to investigate such details as the buyer desires validated. This vessel or yacht is offered subject to prior sale, price change, or withdrawal without notice.

# PHOTOS







# CONTACTS

---

Andrey Shestakov, leading yacht broker of the sales department of Shestakov Yacht Sales Inc. Shestakov Yacht Sales Inc., the official representative of the Miami/Fort Lauderdale FL headquarters.

## Contact details

---

Email: [andrey@shestakovyachtsales.com](mailto:andrey@shestakovyachtsales.com)

Web: [shestakovyachtsales.com/en/](http://shestakovyachtsales.com/en/)

## Telephones

---

USA: +1(954)274-4435

## Office hours

---

Monday – Saturday: **9:00 - 21:00** EDT

Sunday: **closed**

## Address

---



Harbour Towne Marina, 850 NE 3rd St,  
STE 213, Dania, FL 33004