

## AZZURO DUE — SUNSEEKER



**Судостроитель:** [SUNSEEKER](#)

**Год постройки:** 2009

**Модель:** Моторная яхта

**Цена:** **ЦЕНА ЯХТЫ ПО ЗАПРОСУ**

**Местонахождение:** France

**Длина общая:** 91' 10" (27.99m)

**Ширина:** 20' 9" (6.30m)

**Мин. осадка:** 6' 8" (2.01m)

**Макс. осадка:** 6' 8" (2.01m)

**Макс. скорость:** 30 Kts. (35 MPH)

Купить **AZZURO DUE — SUNSEEKER** а также выбрать подходящую вам яхту из нашего каталога яхт вам поможет опытный яхтенный брокер Андрей Шестаков. На сегодняшний день компания **Shestakov Yacht Sales Inc.** имеет большое количество яхт в собственном списке продаж, а также тесно сотрудничает со всеми крупными яхтенными производителями по всему миру.

Для того чтобы купить яхту **AZZURO DUE — SUNSEEKER** а также проконсультироваться по любому вопросу связанному с покупкой, продажей, чартером яхт позвоните по телефону **+7(918)465-66-44**.

# ОГЛАВЛЕНИЕ

ОГЛАВЛЕНИЕ	2
ХАРАКТЕРИСТИКИ	3
Обзор	3
Основная информация	3
Размеры	3
Скорость, вместимость и масса	3
Размещение	3
Корпус и палуба	4
Информация о двигателе	4
ПОДРОБНОЕ ОПИСАНИЕ	5
Accommodation	5
Additional	5
Vessel Description	7
Исключения	8
Отказ от ответственности	8
ФОТОГРАФИИ	9
AZZURRO DUE GA Layout.png	9
КОНТАКТЫ	14
Контактная информация	14
Телефоны	14
Время работы	14
Адрес	14

# ХАРАКТЕРИСТИКИ

## Обзор

The very popular 90 Yacht is designed around a high performance hull which has unrivalled sea keeping qualities, and yet offers a large internal volume for accommodation for 8 guests and 5 crew. "AZZURO DUE" is equipped with a very comprehensive specification including TRAC Fin Stabilisers, Seamless (Electrical) Transfer, 2 x 27KW Kohler generators and a 'custom' stainless steel full length bimini top with integrated lights. She has a very sociable deck layout and, between the flybridge and aft hydraulic platform, this yacht can accommodate a large tender and 2 x jetskis (with crane on flybridge). Presented in A1 condition "AZZURO DUE" has been expertly maintained by a full time crew for an uncompromising Swiss owner. A beautiful Yacht, ready to go for the season.

## Основная информация

**Тип судна:** Моторная яхта

**Модельный год:** 2009

**Год постройки:** 2009

**Страна:** France

## Размеры

**Длина общая:** 91' 10" (27.99m)

**Ширина:** 20' 9" (6.30m)

**Мин. осадка:** 6' 8" (2.01m)

**Макс. осадка:** 6' 8" (2.01m)

## Скорость, вместимость и масса

**Макс. скорость:** 30 Kts. (35 MPH)

**Водоизмещение:** 156528.20602 Pounds

**Вместимость воды:** 396.258078 Gallons

**Объем топливного бака:** 2562.4689044 Gallons

## Размещение

**Всего коек:** 8

**Койки экипажа:** 5

## Корпус и палуба

---

**Материал корпуса:** Fiberglass

**Цвет корпуса:** White hull

## Информация о двигателе

---

**Двигатели:** 2

**Производитель:** Caterpillar

**Модель:** C32 ACERT

**Тип топлива:** Diesel

# ПОДРОБНОЕ ОПИСАНИЕ

## Accommodation

This stunning 90 Yacht offers accommodation for 8 guests in four en suite cabins. The accommodation is all located on the lower deck and comprises of a spacious full beam master stateroom aft, with large en suite and walk in wardrobe, VIP stateroom forward with en suite, an en suite twin cabin to port which can be converted into a double and another en suite twin cabin to starboard. She offers a spacious saloon and dining area as well as vast exterior areas.

## Additional

2.4 metre Whip Aerial for FM Radio to match VHF Aerial on Radar arch 220v outlet to port side of radar arch in water proof enclosure 24v and 12v DC electrical system with full circuit breaker protection 4 x engine batteries 24v circuit 50mm electric cherry venetian blinds in lieu of std 50mm Granite upstand in Emporador Light Semi Matt Finish to back of granite worktop and 25mm Granite fiddle in Emparador light semi matt finish to forward edge of worktop 8 x domestic batteries 24v circuit AC socket in laundry AC sockets throughout the boat Additional AC 220v double socket located above on aft outboard work surface Additional aft deck shower located on starboard aft edge of moulding outboard of lazzerette door Additional air handler providing fresh air make up located under chart table in Wheelhouse with air intake located in Foredeck locker (locker to be vented). Air outlets located in all Guest cabins and crew cabins Additional drainholes to aft edge of bathing platform Additional gas ram to Aft Cockpit Engine Room hatch Additional gearbox PTO to allow simultaneous thrusting Additional overhead red lighting on additional circuit White lights to be located to forward edge of headlining panel, Red lights to be located to aft edge of first headlining panel Additional runners (Approx 1000mm wide, edgebound) in Helios - Jute 40098 (as Bt 4320575) for main saloon & lower lobby Additional set of curtains for crew and guest cabins Additional stainless steel bar above outboard edges of flybridge windscreen Additional storage cupboard below portlight with cherry satin finish to front Aft cockpit table to be large one-piece in natural teak on two stainless steel pedestals in lieu of std Air conditioning Air Horn upgraded to twin Kahlenburg All air handlers to have sound insulation All cabin doors to have Timage All-Chrome handles (ART465A00CR-SC) and Timage All-Chrome snib locks (ART46600C) in lieu of std All exterior mouldings to be Ral White in lieu of std All flybridge moulded furniture (Ral White Finish) to be raised off deck with teak blocks to allow access for drainage in lieu of std All guest cabins to have iPod docking stations (Apple type) hidden from view All over head lighting (except En-Suites, Walk-in-Wardrobes and crew) to be on dimmers in lieu of std Alternator split charging system Back up fresh water pump, plumbed in with diverter valve for immediate use if required Bar and stools not required in Main Saloon Bar with granite top Bathing platform to have stainless steel handrail to aft edge between recessed corners (not to extend to full width of bathing platform) Berth to have rope lighting feature around base Bidet deleted, toilet centred accordingly Bidet wash option for the standard Tecma toilet Bilges to have storage shelves located outboard Black mesh windscreen cover with

pop studs located nearer to windscreen in lieu of std Bose upgrade for Aft Cockpit - 2 x Bose 131 speakers powered by 1 x Bose SA2 amplifiers allowing for Zone control of the Saloon Bose system with the Bose PMCI remote Bose upgrade for Flybridge - 6 x Bose 131 speakers powered by 2 x Bose SA2 amplifiers allowing for Zone control of the Saloon Bose system with the Bose PMCI remote Bulkhead mounted Brot chrome illuminated magnifying mirror within close proximity to basins Bulwark rails raised by approximately 100mm in lieu of std - side deck bars to run over cleats Canvas covers for Exterior tables (Linen Beige Sunbrella Supreme canvas) Caterpillar Marine Power Displays in addition to standard displays and analogue gauges (single helm only) Chafing bar for side bulwark cleats to protect radius of outboard bulwark moulding Chocks on flybridge (to have cut out sections to reduce weight) for two Jet Skis Chocks on Platform for Tender (to have cut out sections to reduce weight) - Tender type TBC Coffee table to be large square type in satin cherry with black inlaid marquetry in lieu of std Control head for flybridge CD/radio system Crane - Hydraulic Flybridge Crane for launch and recovery of Jet Ski - 350 kg maximum lift capacity Cupboards and drawers to have bar type handles in addition to catches Custom Bimini Top in Linen Beige Sunbrella Supreme canvas with Stainless steel frame work Diesel FuelMag conditioning system for engines FM1500 and generators FM500 Dinghy Inflator & socket 12 volt in lazarette Dining table to be large square type in lieu of std Double AC sockets Drawers and cabinets to have long bar type handles in addition to catches Drinks cabinet with glassware stowage for eight (8 x Champagne, 8 x whisky, 1 x decanter) DVD/CD/Radio surround sound entertainment system (five speakers and sub-woofer) Eight free-standing dining chairs Electric multifunction oven - Bosch HBN 580650B GB in lieu of standard fitted Electrical - Isolation Transformer Electrical - Seamless Transfer Engine room fans to be reversible in lieu of std Extended Galley option Fire detection system with monitoring panel in Wheelhouse Flybridge aft rail and stairway surround height to be increased to 1000mm above deck in lieu of std Flybridge companionway hatch in tinted perspex with RAL White surround Flybridge furniture to consist of 'U'-Shaped seating area to Starboard side (Ral White Finish) with large one-piece fixed natural teak table on two stainless steel pedestals and 'L'-shaped seating area to port side (RAL White Finish) with fixed one-piece teak table on one stainless steel pedestal with and additional 870mm box unit (Ral White Finish) to forward end in lieu of std Flybridge rails to be increased in diameter from 32mm to 38mm Flybridge wetbar to be smaller 82 Yacht type with 1 x Gaganeau VR421 lava coal griddles in lieu of std Foredeck sunpad to have 3 large type adjustable headrests to aft end only in lieu of std Forward VIP Walk-in-Wardrobe to have horizontal type portlight Fresh water deckwash outlet located on underside of port radar arch in lieu of std Full size Miele dishwasher in lieu of std Furuno Navtex NX-300 located outboard on port side in Wheelhouse in the Wheelhouse Galley blind not required Galley serving hatch to be 700mm wide and centred with two sliding cherry satin doors. Top box lockers required above in Galley with downlighters on underside Galley sink to be Larger Franke type in lieu of std Gas struts on Flybridge wetbar to be stronger type in lieu of std Glendinning Cablemaster - 1 x 100 amp power feed and recovery of 220v AC shorepower cable and 1 x 63 amp Shore power socket (with 20 metre cable) in lieu of std Halogen overhead lighting 24v Halyard Exhaust Silencer to be fitted to engine exhaust in the Engine compartment and ancillaries Handrail to lower lobby stairs to be covered in Carlucci Souk CA7231/6 Faux Chocolate leather in lieu of std Heated towel rail in master cabin in lieu of std Hob to be Miele KM 5670 in lieu of standard (with stainless steel rail surround) with larger extractor unit to

accommodate in lieu of std Hull fittings port and starboard for client supply Todd Side mount boarding ladder 43BL600 Idromar MC5S watermaker Inboard cupboard beside oven to be split into two drawers with cupboard located below Infill for forward sunpad to be carbon fibre & split in 2 for stowage in flybridge seat base iPod docking station connected to surround sound system Items on Radar Arch to be Ral White where possible in lieu of std (including satellite domes) KVH M9 satellite TV system with Sky decoders located in all four guest cabins, main saloon and both crew cabins with KVH M9 dummy dome on opposite side of radar arch Larger bin in galley Laundry to have overhead extractor fan Lazerette to have additional shelf (total of two) LCD Flatscreen television (42") on rise & fall Low Level courtesy lights on transom riser steps to be Timage 'Orion S' in lieu of std Low level deck lights to be Timage Orion 'B' in lieu of std Munter filters or similar in engine room Navigation lights to be large black plastic type in lieu of std Navy Blue Waterline Boot Top to be sprayed on in lieu of std No AV unit - AV equipment to be relocated to port outboard cabinet aft of central column in lieu of std Oil change system for engines gearboxes and generators Passerelle to have stainless steel finish in lieu of std Pull out towel rail located outboard aft of sink in low level locker Radar Chair to be Ral White in lieu of std Raymarine G-Series equipment Remote battery switches controlled from locker in cockpit Secure forward edge of foredeck sunpad with tenex fasteners in lieu of std Sensor connected to fire detection system Separate charger and battery pack for generators in lieu of std in the Engine compartment and ancillaries Shelves in wardrobes to be adjustable in lieu of std Shelving unit with double 220V socket on starboard outboard bulkhead aft of side deck door Shower door to be one-piece Daryl type in lieu of std Side mount stairway storage bracket above engine Sink to have macerator diverted directly overboard Soap dispensers in lieu of soap dishes Sofa seating in aft saloon with scatter cushions Stainless steel framed sliding patio door to aft cockpit with curtains and tie back Stainless steel handrail in shower cubicle Stainless steel hooks for stowage of warps located above Capstans on inside of bulwark Stainless steel infills required between forward edge of flybridge safety rails and radar arch moulding Stainless steel ladder for access to bilge areas with storage shelving in bilges Standby DC fresh water pump - fitted using separate pick-up and strainer from tank feeding separately into main water circuit Steamer unit located in aft outboard cupboard (usual location for optional microwave) Storage Cage located in the Engine Room Stowage for client supply glassware in lieu of std Tap to be pull-out hose type in lieu of std Teak shelf with drop in cool box with chiller unit in to back of Day Head moulding in lieu of std Telephone point (aft port side) Throttle controls on flybridge helm to be moved to portside of helm in lieu of std (GRP Platform modified to suit) Trac Star Digital fin stabiliser system (providing full roll control at speeds above 13 knots and significant roll reduction while at rest or anchor) Transom riser LED lights to be Timage Orion 'S' in lieu of std Trim Tabs to be increased to 860 mm in width in lieu of std. To be 480 mm in length in the Moulding, in the Engine compartment and ancillaries Twin anchor option with 120m of galvanised chain on primary anchor in lieu of std Two fuel senders with two analogue gauges to each helm (as per 86 Yacht) Two Kohler 27kw 50Hz with super silent sound shields in lieu of standard two Kohler 23kw 50Hz Two tub chairs with small square satin cherry finish coffee table located outboard on port side U-Line 24 bottle Wine Cooler

## Vessel Description

The very popular 90 Yacht is designed around a high performance hull which has unrivalled sea keeping qualities, and yet offers a large internal volume for accommodation for 8 guests and 5 crew. "AZZURO DUE" is equipped with a very comprehensive specification including TRAC Fin Stabilisers, Seamless (Electrical) Transfer, 2 x 27KW Kohler generators and a 'custom' stainless steel full length bimini top with integrated lights. She has a very sociable deck layout and, between the flybridge and aft hydraulic platform, this yacht can accommodate a large tender and 2 x jetskis (with crane on flybridge). Presented in A1 condition "AZZURO DUE" has been expertly maintained by a full time crew for an uncompromising Swiss owner. A beautiful Yacht, ready to go for the season.

## Исключения

---

При продаже яхты исключаются личные вещи владельца.

## Отказ от ответственности

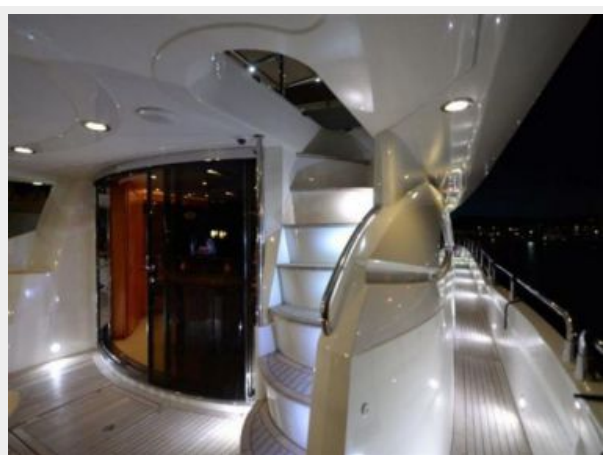
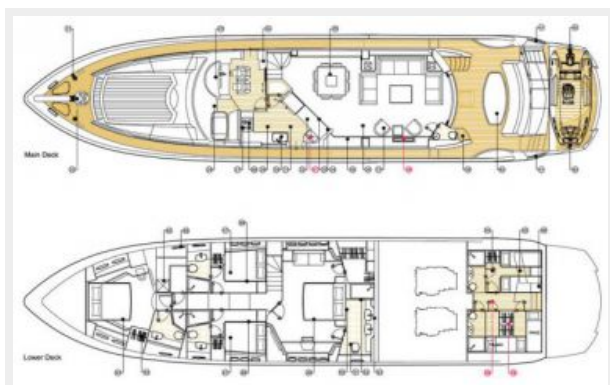
---

Компания предоставляет описание судна или яхты добросовестно, но не может гарантировать точность этой информации, а также не ручается за техническое состояние. Покупатель должен проинструктировать своих агентов или оценщиков исследовать представленную информацию более подробно, по собственному желанию. Продажа судна или яхты, изменение цены или снятие с продажи будет происходить без предварительного уведомления.



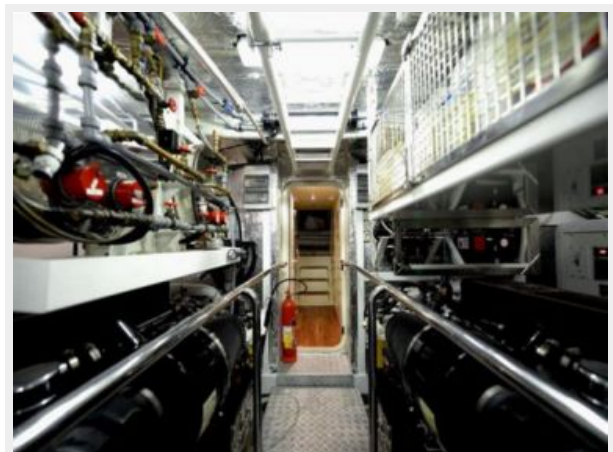
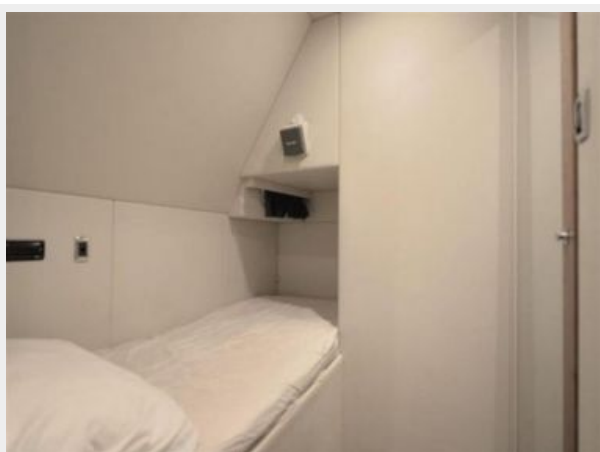
# ФОТОГРАФИИ

AZZURRO DUE GA Layout.png











# КОНТАКТЫ

---

Андрей Шестаков (Andrey Shestakov) – ведущий яхтенный брокер отдела продаж яхт и судов компании Shestakov Yacht Sales Inc. Официальный представитель Shestakov Yacht Sales Inc. для русскоговорящих клиентов в центральном офисе компании в Майами/Форт Лодердейл/Флорида/США.

## Контактная информация

---

Email: [andrey@shestakovyachtsales.com](mailto:andrey@shestakovyachtsales.com)

Web: [shestakovyachtsales.com](http://shestakovyachtsales.com)

## Телефоны

---

Краснодарский край: **+7(918)465-66-44**

США, Майами, Флорида: **+1(954)274-4435**

## Время работы

---

Понедельник – Суббота: **9:00 - 21:00**  
EDT

Воскресенье: **Закрето**

## Адрес

---



Harbour Towne Marina, 850 NE 3rd St,  
STE 213, Dania, FL 33004