

## AMORE MIO — SUNSEEKER



**Builder:** SUNSEEKER

**Year Built:** 2003

**Model:** Motor Yacht

**Price:** PRICE ON APPLICATION

**Location:** Italy

**LOA:** 65' 11" (20.09m)

**Beam:** 16' 3" (4.95m)

**Min Draft:** 4' 10" (1.47m)

**Max Draft:** 4' 10" (1.47m)

**Max Speed:** 35 Kts. (40 MPH)

Our experienced yacht broker, Andrey Shestakov, will help you choose and buy a yacht that best suits your needs **AMORE MIO — SUNSEEKER** from our catalogue. Presently, at Shestakov Yacht Sales Inc., we have a wide variety of yachts available on our sale's list. We also work in close contact with all the big yacht manufacturers from all over the world.

If you would like to buy a yacht **AMORE MIO — SUNSEEKER** or would like help answering any questions concerning purchasing, selling or chartering a yacht, please call **+1(954)274-4435**

---

# TABLE OF CONTENTS

---

TABLE OF CONTENTS	2
SPECIFICATIONS	3
Overview	3
Basic Information	3
Dimensions	3
Speed, Capacities and Weight	3
Accommodations	3
Hull and Deck Information	4
Engine Information	4
DETAILED INFORMATION	5
Accommodation	5
Additional	5
Vessel Description	5
Exclusions	5
Disclaimer	6
PHOTOS	7
CONTACTS	14
Contact details	14
Telephones	14
Office hours	14
Address	14

---

# SPECIFICATIONS

---

## Overview

---

The Sunseeker Manhattan 64 offers all the space of a Flybridge Motoryacht, with generous and comfortable accommodation. With tunnel drives and a sleek hull design, she delivers an impressive top speed, combined with remarkable manoeuvrability. Inside, "AMORE MIO" is complemented by a further Saloon aft, with Galley and bar. Accommodation includes a full-width Owner's Stateroom, VIP Double Cabin and Twin Guest Cabin plus Twin Berth Aft Crew Cabin. Other practical details include convenient access to the flybridge from both the Saloon and the aft Cockpit, and the provision of a large bathing platform, perfect for a tender or for sunbathing. Please contact us for more information.

## Basic Information

---

**Category:** Motor Yacht

**Model Year:** 2003

**Year Built:** 2003

**Country:** Italy

## Dimensions

---

**LOA:** 65' 11" (20.09m)

**Beam:** 16' 3" (4.95m)

**Min Draft:** 4' 10" (1.47m)

**Max Draft:** 4' 10" (1.47m)

## Speed, Capacities and Weight

---

**Max Speed:** 35 Kts. (40 MPH)

**Displacement:** 63934.05598 Pounds

**Water Capacity:** 184.9204364 Gallons

**Fuel Capacity:** 792.516156 Gallons

## Accommodations

---

**Total Berths:** 6

---

## Hull and Deck Information

---

**Hull Material:** GRP

**Hull Color:** White hull with navy hull band & navy boot top stripe

---

## Engine Information

---

**Engines:** 2

**Manufacturer:** MAN

**Model:** 1050

**Fuel Type:** Diesel

## DETAILED INFORMATION

### Accommodation

6 berths in 3 Cabins plus Crew Cabin. Full beam midships Master Cabin with full ensuite facilities. VIP Guest Cabin forward with double berth & full ensuite facilities. Twin Guest Cabin to port is also ensuite. Twin berth aft Crew Cabin with own facilities. Large split level Saloon with dinette forward & fully equipped social Galley aft. Full Cherry Superyacht interior with cream carpets & cream leather Saloon upholstery. Access from Saloon to Flybridge.

### Additional

Air Conditioning  
Bimini top with navy blue canvas  
Blue mesh covers for side windows  
Chain counter on lower and flybridge consoles  
Chart / navigation courtesy Light  
Cockpit ceramic griddle  
- AEG competence 231GR-M  
Cockpit teak decking  
Console & Raystar 120 GPS Diff receiver with 4kw 48" open scanner  
Flybridge tonneau cover in navy blue canvas  
Fresh water deck wash with outlets fwd & aft including deck wash hose kit  
Generator upgraded to Kohler 19kw 50Hz (19EFOZ)  
Glendinning cablemaster - power feed and recovery of shorepower 220V AC cable  
Hydraulic telescopic gangway 3.9 metres with teak treads (ART 380.39)  
MAN MMDS monitoring diagnostic panels - Dual station  
Pouffee stool in Rouched cream leather with low backrest with storage inside x 2  
Raymarine 230E with loudhailer on hoop  
Raymarine autopilot system ST7001+ dual station  
Raymarine RL80CRC Plus 10" colour radar/chartplotter on lower console with RL80C 10" Colour radar repeater on fly  
Raymarine ST60 Rotavecta A22012 wind speed indicator fitted on hoop  
Safe - 2 brick - with key lock  
Teak side decks

### Vessel Description

The Sunseeker Manhattan 64 offers all the space of a Flybridge Motoryacht, with generous and comfortable accommodation. With tunnel drives and a sleek hull design, she delivers an impressive top speed, combined with remarkable manoeuvrability. Inside, "AMORE MIO" is complemented by a further Saloon aft, with Galley and bar. Accommodation includes a full-width Owner's Stateroom, VIP Double Cabin and Twin Guest Cabin plus Twin Berth Aft Crew Cabin. Other practical details include convenient access to the flybridge from both the Saloon and the aft Cockpit, and the provision of a large bathing platform, perfect for a tender or for sunbathing. Please contact us for more information.

### Exclusions

Owner's personal belongings.

---

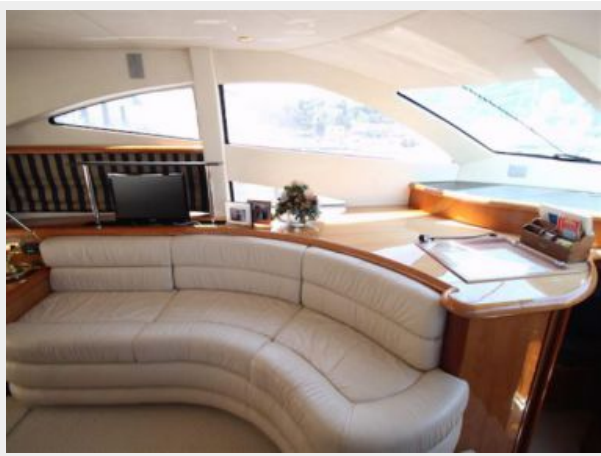
## Disclaimer

---

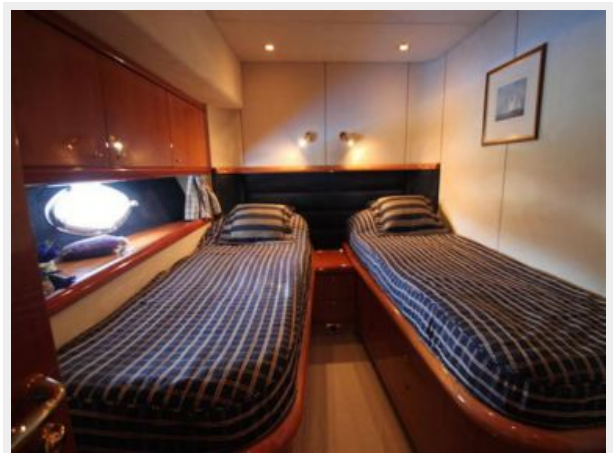
The Company offers the details of this vessel or yacht in good faith but cannot guarantee or warrant the accuracy of this information nor warrant the condition of the vessel. A buyer should instruct his representatives, agents, or his surveyors, to investigate such details as the buyer desires validated. This vessel or yacht is offered subject to prior sale, price change, or withdrawal without notice.

# PHOTOS

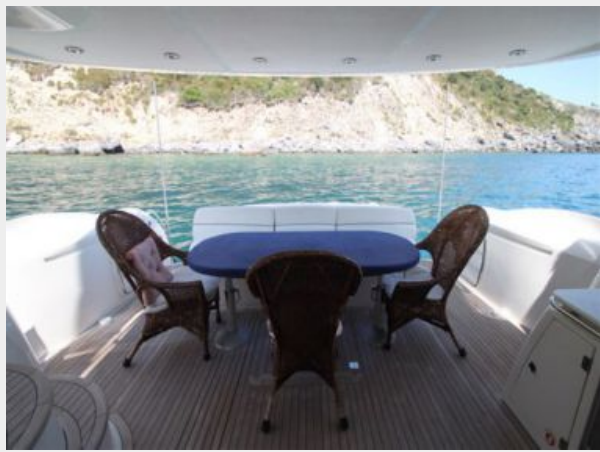
















# CONTACTS

---

Andrey Shestakov, leading yacht broker of the sales department of Shestakov Yacht Sales Inc. Shestakov Yacht Sales Inc., the official representative of the Miami/Fort Lauderdale FL headquarters.

## Contact details

---

Email: [andrey@shestakovyachtsales.com](mailto:andrey@shestakovyachtsales.com)

Web: [shestakovyachtsales.com/en/](http://shestakovyachtsales.com/en/)

## Telephones

---

USA: +1(954)274-4435

## Office hours

---

Monday – Saturday: **9:00 - 21:00** EDT

Sunday: **closed**

## Address

---



Harbour Towne Marina, 850 NE 3rd St,  
STE 213, Dania, FL 33004