

RIVA DOMINO 86 — RIVA



Builder: RIVA

Year Built: 2010

Model: Motor Yacht

Price: PRICE ON APPLICATION

Location: Monaco

LOA: 86' 7" (26.39m)

Beam: 20' 5" (6.20m)

Min Draft: 6' 0" (1.83m)

Max Draft: 6' 0" (1.83m)

Max Speed: 38 Kts. (44 MPH)

Our experienced yacht broker, Andrey Shestakov, will help you choose and buy a yacht that best suits your needs **RIVA DOMINO 86 — RIVA** from our catalogue. Presently, at Shestakov Yacht Sales Inc., we have a wide variety of yachts available on our sale's list. We also work in close contact with all the big yacht manufacturers from all over the world.

If you would like to buy a yacht **RIVA DOMINO 86 — RIVA** or would like help answering any questions concerning purchasing, selling or chartering a yacht, please call **+1(954)274-4435**

TABLE OF CONTENTS

| | |
|------------------------------|----|
| TABLE OF CONTENTS | 2 |
| SPECIFICATIONS | 3 |
| Overview | 3 |
| Basic Information | 3 |
| Dimensions | 3 |
| Speed, Capacities and Weight | 3 |
| Accommodations | 3 |
| Hull and Deck Information | 4 |
| Engine Information | 4 |
| DETAILED INFORMATION | 5 |
| Accommodation | 5 |
| Additional | 5 |
| Vessel Description | 6 |
| Exclusions | 6 |
| Disclaimer | 6 |
| PHOTOS | 7 |
| CONTACTS | 11 |
| Contact details | 11 |
| Telephones | 11 |
| Office hours | 11 |
| Address | 11 |

SPECIFICATIONS

Overview

The Metallic Ice and Titanium Grey exterior sets the tone of how special this boat is just walking up to her on the quay. This Riva 86 Domino is quite simply stunning. Using the Italian flair for design and German engineering for propulsion, she makes for a perfect combination for a blast to Saint Tropez or a sedated cruise along the Italian coast. Boasting four cabins, comprising of two doubles, a twin and an exceptional full beam master she will sleep 8 in comfort with accommodation for 4 Crew in 2 cabins. The thrill of the ride can also be enjoyed with the discreet sports flybridge that can be accessed via the rear cockpit. The current owner is upgrading to a much larger yacht and will be looking to specify much of the same levels of equipment and extras that adorn this boat. The extras list shows that no expense has been spared. This 2010 hull, 2011 launched vessel is well presented and viewing is recommended.

Basic Information

Category: Motor Yacht

Model Year: 2010

Year Built: 2010

Country: Monaco

Dimensions

LOA: 86' 7" (26.39m)

Beam: 20' 5" (6.20m)

Min Draft: 6' 0" (1.83m)

Max Draft: 6' 0" (1.83m)

Speed, Capacities and Weight

Max Speed: 38 Kts. (44 MPH)

Displacement: 165787.621024 Pounds

Water Capacity: 237.7548468 Gallons

Fuel Capacity: 1981.29039 Gallons

Accommodations

Total Berths: 8

Crew Berths: 4

Hull and Deck Information

Hull Material: GRP

Hull Color: Silver Grey

Engine Information

Engines: 2

Manufacturer: MTU

Model: 16V 2000 M93

Fuel Type: Diesel

DETAILED INFORMATION

Accommodation

The aft cockpit boasts a U shaped seating area where guests are accommodated around a custom solid teak table. The saloon is furnished with custom leather sofas and beautiful flooring, and the 65" mirrored TV entertains when switched on and hides away discreetly when off. For more private dining, further seating and sunbathing can be found at the bow. A bimini canopy offers shade. The discreet flybridge is accessed via teak stairs from the rear cockpit, with a thrilling position to enjoy the Riva's sharp handling credentials. The aft full width master cabin is vast with the provision of a sofa and walk in wardrobe. The ensuite offers a double sink and double shower, along with electric toilet and bidet option. The double and twin cabins are also equipped with ensuite facilities. Crew accommodation for 4, with 2 bunk bed cabins.

Additional

15" TV + CD/DVD/MP3 PLAYER IN CREW DINING AREA 17" BUILT-IN TV IN GUEST CABIN (starboard side) 2 x 17" DISPLAYS ON DASHBOARD 20" BUILT-IN TV IN GUEST CABIN (port side) 26" BUILT-IN TV IN VIP CABIN 42" BUILT-IN TV IN MASTER CABIN 65" TV MIRROR IN THE MAIN SALON ADDITIONAL INTERNATIONAL DECODER FOR GUEST CABIN (starboard side) ADDITIONAL INTERNATIONAL DECODER FOR VIP CABIN ADDITIONAL MICROWAVE IN THE CREW DINETTE ADDITIONAL MICROWAVE IN THE GALLEY ADDITIONAL PLUGS ON THE FLYBRIDGE AND AT BOW ADDITIONAL UNDERWATER CAMERA TO BE INSTALLED AT AFT UNDER THE SWIMMING PLATFORM AND TO BE CONNECTED TO THE CCTV SYSTEM AFT GARAGE: FITTING OF A TENDER AND ONE JET SKI BATHROOMS: CUSTOM CORIAN IN SUBSTITUTION OF THE ONE AS PER 86' DOMINO DESIGN BOW AREA - PROTECTION FOR WINCHES COCKPIT: ADDITIONAL HANDRAIL ALONG THE STAIRCASE LEADING TO THE FLYBRIDGE CUSTOM PORTHOLES: TO BE OVAL SHAPED IN SUBSTITUTION OF THE STANDARD ONES DINING AREA CHAIRS: CUSTOM LEATHER UPHOLSTERY DINING AREA TABLE: CUSTOM FINISHING ELECTRIC CURTAINS (EXCEPT CREW QUARTER AND BATHROOMS) ELECTRONIC SAFE IN CAPTAIN CABIN ELECTRONIC SAFE IN GUEST CABIN (port side) EXTERNAL TABLES: CUSTOM FINISHING FOR THE TOPS FLY BRIDGE SOFA GLASS HOLDER IN PLEXIGLAS FLYBRIDGE: ELECTRIC MOVING DASHBOARD WITH COMPLETE NAVIGATION SYSTEMS (12" FURUNO DISPLAY, AUTOMATIC PILOT, TRIDATA, CHAIN COUNTER, ENGINES ANALOGIC INSTRUMENTATION)HYDRAULIC STERN THRUSTER (power: 40 hp) INTERIOR WOOD: ELM TO BE SUBSTITUTED WITH THE 52 RIVALE OAK INTERNATIONAL DECODER FOR CREW DINETTE IPOD DOCKING STATIONS MANUAL BIMINI TOP FOR BOW SOFA AND TABLE MASTER CABIN - VANITY SEAT: CUSTOM POUFFE IN SUBSTITUTION OF THE STANDARD CHAIRCARPET: CUSTOM CARPET MASTER CABIN BATHROOM: CREATION OF AN ADDITIONAL STORAGE MASTER CABIN SOFA: CUSTOM LEATHER UPHOLSTERY MASTER CABIN: ARMCHAIR TO BE REPLACED WITH A CUSTOM FURNITURE MINI M ANTENNA SATCOM

SAILOR WITH SAT TELEPHONE N°2 LIGHTS ON ROLLBAR FOR STERN AREA LIGHTING
NATURAL COVRE SOLE LEATHER TO BE REPLACED WITH CUSTOM SOLE LEATHER
NAVIOP 15" DISPLAY IN CREW DINETTE PILOT HOUSE SEATS: CUSTOM LEATHER
UPHOLSTERY PORT SIDE GUEST CABIN BATHROOM: COMBINED WC/BIDET + A
CUSTOM CABINET, IN SUBSTITUTION OF THE STANDARD WC AND BIDET SALOON
SOFAS: CUSTOM LEATHER UPHOLSTERY SALOON TABLE: CUSTOM FINISHING SAT TV
ANTENNA M7 KVH + 2 x INTERNATIONAL DECODERS STBD SIDE GUEST CABIN
BATHROOM: COMBINED WC/BIDET + A CUSTOM CABINET, IN SUBSTITUTION OF THE
STANDARD WC AND BIDET TENDER WILLIAMS 385 JET + Kawasaki Jet Ski THIRD HELM
STATION WITH ANCHOR WINCH, BOW/STERN THRUSTER CONTROL, BIDATAUV FILTER
FOR THE STANDARD FOR THE STANDARD WATER MAKER VIP CABIN BATHROOM:
COMBINED WC/BIDET + A CUSTOM CABINET, IN SUBSTITUTION OF THE STANDARD WC
AND BIDET WASHING MACHINE AND DRIER MACHINE IN CREW DINETTE

Vessel Description

The Metallic Ice and Titanium Grey exterior sets the tone of how special this boat is just walking up to her on the quay. This Riva 86 Domino is quite simply stunning. Using the Italian flair for design and German engineering for propulsion, she makes for a perfect combination for a blast to Saint Tropez or a sedated cruise along the Italian coast. Boasting four cabins, comprising of two doubles, a twin and an exceptional full beam master she will sleep 8 in comfort with accommodation for 4 Crew in 2 cabins. The thrill of the ride can also be enjoyed with the discreet sports flybridge that can be accessed via the rear cockpit. The current owner is upgrading to a much larger yacht and will be looking to specify much of the same levels of equipment and extras that adorn this boat. The extras list shows that no expense has been spared. This 2010 hull, 2011 launched vessel is well presented and viewing is recommended.

Exclusions

Owner's personal belongings.

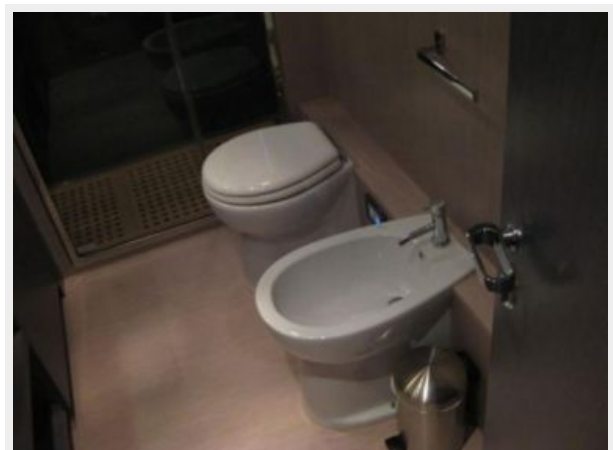
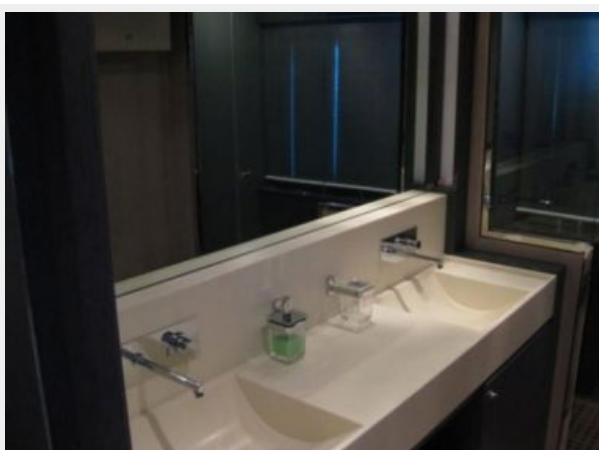
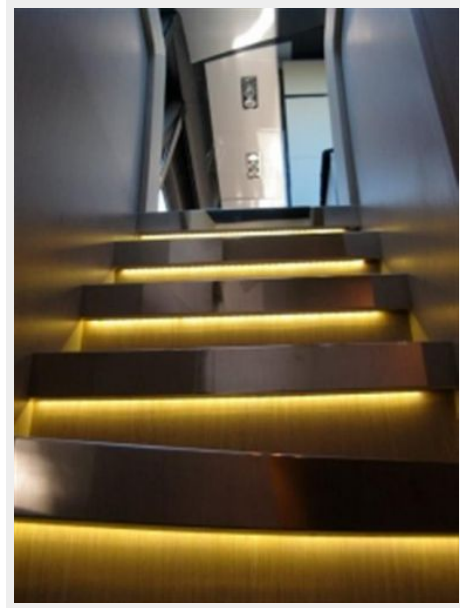
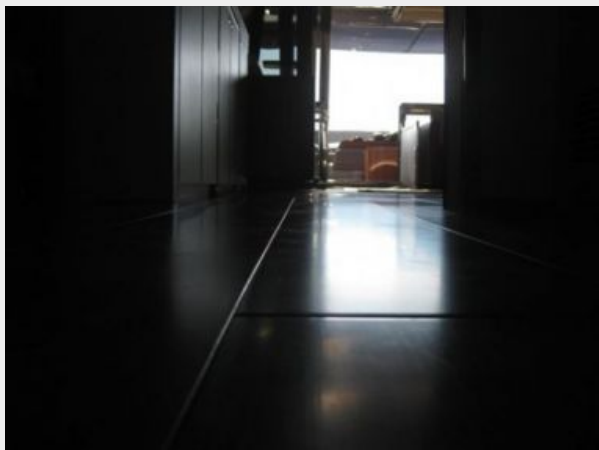
Disclaimer

The Company offers the details of this vessel or yacht in good faith but cannot guarantee or warrant the accuracy of this information nor warrant the condition of the vessel. A buyer should instruct his representatives, agents, or his surveyors, to investigate such details as the buyer desires validated. This vessel or yacht is offered subject to prior sale, price change, or withdrawal without notice.

PHOTOS









CONTACTS

Andrey Shestakov, leading yacht broker of the sales department of Shestakov Yacht Sales Inc. Shestakov Yacht Sales Inc., the official representative of the Miami/Fort Lauderdale FL headquarters.

Contact details

Email: andrey@shestakovyachtsales.com

Web: shestakovyachtsales.com/en/

Telephones

USA: +1(954)274-4435

Office hours

Monday – Saturday: **9:00 - 21:00** EDT

Sunday: **closed**

Address



Harbour Towne Marina, 850 NE 3rd St,
STE 213, Dania, FL 33004