

RIVA DOMINO 86 — RIVA



Судостроитель: [RIVA](#)

Год постройки: 2010

Модель: Моторная яхта

Цена: **ЦЕНА ЯХТЫ ПО ЗАПРОСУ**

Местонахождение: Монако

Длина общая: 86' 7" (26.39m)

Ширина: 20' 5" (6.20m)

Мин. осадка: 6' 0" (1.83m)

Макс. осадка: 6' 0" (1.83m)

Макс. скорость: 38 Kts. (44 MPH)

Купить **RIVA DOMINO 86 — RIVA** а также выбрать подходящую вам яхту из нашего каталога яхт вам поможет опытный яхтенный брокер Андрей Шестаков. На сегодняшний день компания **Shestakov Yacht Sales Inc.** имеет большое количество яхт в собственном списке продаж, а также тесно сотрудничает со всеми крупными яхтенными производителями по всему миру.

Для того чтобы купить яхту **RIVA DOMINO 86 — RIVA** а также проконсультироваться по любому вопросу связанному с покупкой, продажей, чартером яхт позвоните по телефону **+7(918)465-66-44**.

ОГЛАВЛЕНИЕ

ОГЛАВЛЕНИЕ	2
ХАРАКТЕРИСТИКИ	3
Обзор	3
Основная информация	3
Размеры	3
Скорость, вместимость и масса	3
Размещение	3
Корпус и палуба	4
Информация о двигателе	4
ПОДРОБНОЕ ОПИСАНИЕ	5
Accommodation	5
Additional	5
Vessel Description	6
Исключения	6
Отказ от ответственности	6
ФОТОГРАФИИ	7
КОНТАКТЫ	11
Контактная информация	11
Телефоны	11
Время работы	11
Адрес	11

ХАРАКТЕРИСТИКИ

Обзор

The Metallic Ice and Titanium Grey exterior sets the tone of how special this boat is just walking up to her on the quay. This Riva 86 Domino is quite simply stunning. Using the Italian flair for design and German engineering for propulsion, she makes for a perfect combination for a blast to Saint Tropez or a sedated cruise along the Italian coast. Boasting four cabins, comprising of two doubles, a twin and an exceptional full beam master she will sleep 8 in comfort with accommodation for 4 Crew in 2 cabins. The thrill of the ride can also be enjoyed with the discreet sports flybridge that can be accessed via the rear cockpit. The current owner is upgrading to a much larger yacht and will be looking to specify much of the same levels of equipment and extras that adorn this boat. The extras list shows that no expense has been spared. This 2010 hull, 2011 launched vessel is well presented and viewing is recommended.

Основная информация

Тип судна: Моторная яхта

Модельный год: 2010

Год постройки: 2010

Страна: Монако

Размеры

Длина общая: 86' 7" (26.39m)

Ширина: 20' 5" (6.20m)

Мин. осадка: 6' 0" (1.83m)

Макс. осадка: 6' 0" (1.83m)

Скорость, вместимость и масса

Макс. скорость: 38 Kts. (44 MPH)

Водоизмещение: 165787.621024 Pounds

Вместимость воды: 237.7548468 Gallons

Объем топливного бака: 1981.29039 Gallons

Размещение

Всего коек: 8

Койки экипажа: 4

Корпус и палуба

Материал корпуса: GRP

Цвет корпуса: Silver Grey

Информация о двигателе

Двигатели: 2

Производитель: MTU

Модель: 16V 2000 M93

Тип топлива: Diesel

ПОДРОБНОЕ ОПИСАНИЕ

Accommodation

The aft cockpit boasts a U shaped seating area where guests are accommodated around a custom solid teak table. The saloon is furnished with custom leather sofas and beautiful flooring, and the 65" mirrored TV entertains when switched on and hides away discreetly when off. For more private dining, further seating and sunbathing can be found at the bow. A bimini canopy offers shade. The discreet flybridge is accessed via teak stairs from the rear cockpit, with a thrilling position to enjoy the Riva's sharp handling credentials. The aft full width master cabin is vast with the provision of a sofa and walk in wardrobe. The ensuite offers a double sink and double shower, along with electric toilet and bidet option. The double and twin cabins are also equipped with ensuite facilities. Crew accommodation for 4, with 2 bunk bed cabins.

Additional

15" TV + CD/DVD/MP3 PLAYER IN CREW DINING AREA 17" BUILT-IN TV IN GUEST CABIN (starboard side) 2 x 17" DISPLAYS ON DASHBOARD 20" BUILT-IN TV IN GUEST CABIN (port side) 26" BUILT-IN TV IN VIP CABIN 42" BUILT-IN TV IN MASTER CABIN 65" TV MIRROR IN THE MAIN SALON ADDITIONAL INTERNATIONAL DECODER FOR GUEST CABIN (starboard side) ADDITIONAL INTERNATIONAL DECODER FOR VIP CABIN ADDITIONAL MICROWAVE IN THE CREW DINETTE ADDITIONAL MICROWAVE IN THE GALLEY ADDITIONAL PLUGS ON THE FLYBRIDGE AND AT BOW ADDITIONAL UNDERWATER CAMERA TO BE INSTALLED AT AFT UNDER THE SWIMMING PLATFORM AND TO BE CONNECTED TO THE CCTV SYSTEM AFT GARAGE: FITTING OF A TENDER AND ONE JET SKI BATHROOMS: CUSTOM CORIAN IN SUBSTITUTION OF THE ONE AS PER 86' DOMINO DESIGN BOW AREA - PROTECTION FOR WINCHES COCKPIT: ADDITIONAL HANDRAIL ALONG THE STAIRCASE LEADING TO THE FLYBRIDGE CUSTOM PORTHOLES: TO BE OVAL SHAPED IN SUBSTITUTION OF THE STANDARD ONES DINING AREA CHAIRS: CUSTOM LEATHER UPHOLSTERY DINING AREA TABLE: CUSTOM FINISHING ELECTRIC CURTAINS (EXCEPT CREW QUARTER AND BATHROOMS) ELECTRONIC SAFE IN CAPTAIN CABIN ELECTRONIC SAFE IN GUEST CABIN (port side) EXTERNAL TABLES: CUSTOM FINISHING FOR THE TOPS FLY BRIDGE SOFA GLASS HOLDER IN PLEXIGLAS FLYBRIDGE: ELECTRIC MOVING DASHBOARD WITH COMPLETE NAVIGATION SYSTEMS (12" FURUNO DISPLAY, AUTOMATIC PILOT, TRIDATA, CHAIN COUNTER, ENGINES ANALOGIC INSTRUMENTATION)HYDRAULIC STERN THRUSTER (power: 40 hp) INTERIOR WOOD: ELM TO BE SUBSTITUTED WITH THE 52 RIVALE OAK INTERNATIONAL DECODER FOR CREW DINETTE IPOD DOCKING STATIONS MANUAL BIMINI TOP FOR BOW SOFA AND TABLE MASTER CABIN - VANITY SEAT: CUSTOM POUFFE IN SUBSTITUTION OF THE STANDARD CHAIRCARPET: CUSTOM CARPET MASTER CABIN BATHROOM: CREATION OF AN ADDITIONAL STORAGE MASTER CABIN SOFA: CUSTOM LEATHER UPHOLSTERY MASTER CABIN: ARMCHAIR TO BE REPLACED WITH A CUSTOM FURNITURE MINI M ANTENNA SATCOM

SAILOR WITH SAT TELEPHONE N°2 LIGHTS ON ROLLBAR FOR STERN AREA LIGHTING
NATURAL COVRE SOLE LEATHER TO BE REPLACED WITH CUSTOM SOLE LEATHER
NAVIOP 15" DISPLAY IN CREW DINETTE PILOT HOUSE SEATS: CUSTOM LEATHER
UPHOLSTERY PORT SIDE GUEST CABIN BATHROOM: COMBINED WC/BIDET + A
CUSTOM CABINET, IN SUBSTITUTION OF THE STANDARD WC AND BIDET SALOON
SOFAS: CUSTOM LEATHER UPHOLSTERY SALOON TABLE: CUSTOM FINISHING SAT TV
ANTENNA M7 KVH + 2 x INTERNATIONAL DECODERS STBD SIDE GUEST CABIN
BATHROOM: COMBINED WC/BIDET + A CUSTOM CABINET, IN SUBSTITUTION OF THE
STANDARD WC AND BIDET TENDER WILLIAMS 385 JET + Kawasaki Jet Ski THIRD HELM
STATION WITH ANCHOR WINCH, BOW/STERN THRUSTER CONTROL, BIDATAUV FILTER
FOR THE STANDARD FOR THE STANDARD WATER MAKER VIP CABIN BATHROOM:
COMBINED WC/BIDET + A CUSTOM CABINET, IN SUBSTITUTION OF THE STANDARD WC
AND BIDET WASHING MACHINE AND DRIER MACHINE IN CREW DINETTE

Vessel Description

The Metallic Ice and Titanium Grey exterior sets the tone of how special this boat is just walking up to her on the quay. This Riva 86 Domino is quite simply stunning. Using the Italian flair for design and German engineering for propulsion, she makes for a perfect combination for a blast to Saint Tropez or a sedated cruise along the Italian coast. Boasting four cabins, comprising of two doubles, a twin and an exceptional full beam master she will sleep 8 in comfort with accommodation for 4 Crew in 2 cabins. The thrill of the ride can also be enjoyed with the discreet sports flybridge that can be accessed via the rear cockpit. The current owner is upgrading to a much larger yacht and will be looking to specify much of the same levels of equipment and extras that adorn this boat. The extras list shows that no expense has been spared. This 2010 hull, 2011 launched vessel is well presented and viewing is recommended.

Исключения

При продаже яхты исключаются личные вещи владельца.

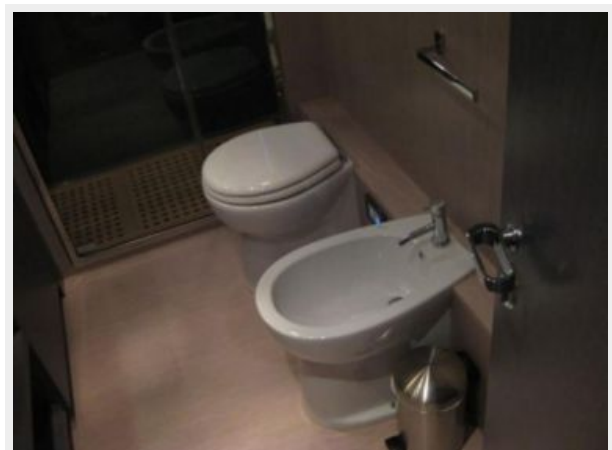
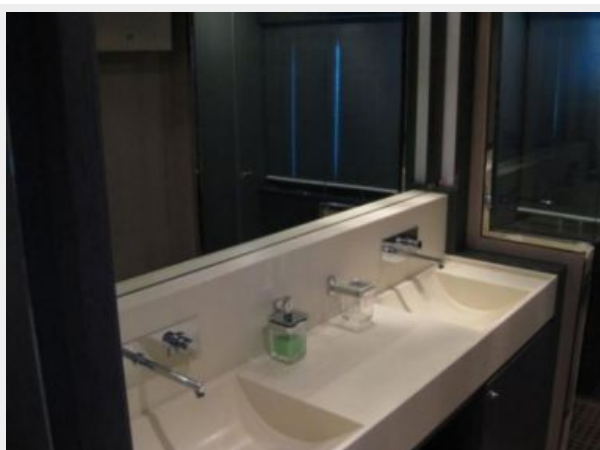
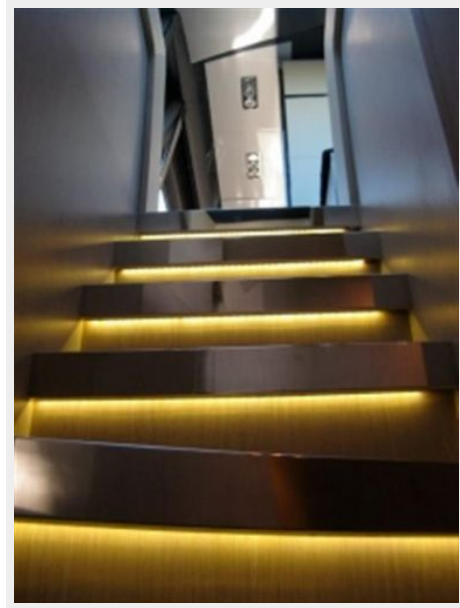
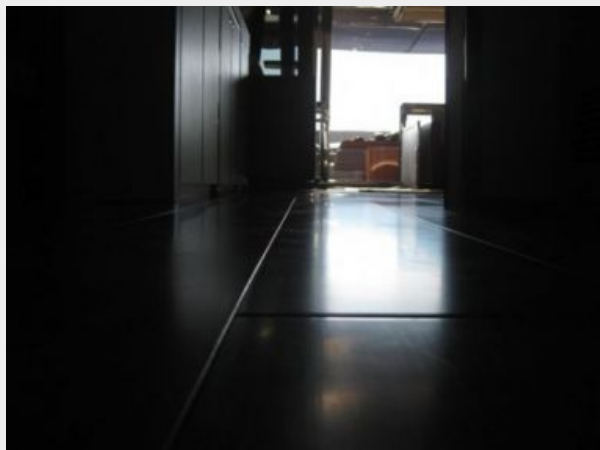
Отказ от ответственности

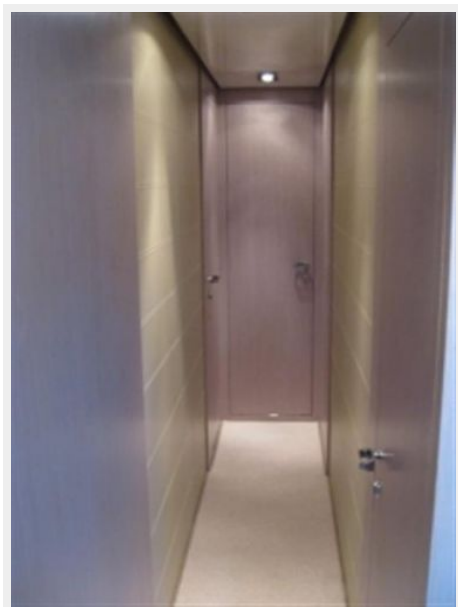
Компания предоставляет описание судна или яхты добросовестно, но не может гарантировать точность этой информации, а также не ручается за техническое состояние. Покупатель должен проинструктировать своих агентов или оценщиков исследовать представленную информацию более подробно, по собственному желанию. Продажа судна или яхты, изменение цены или снятие с продажи будет происходить без предварительного уведомления.

ФОТОГРАФИИ









КОНТАКТЫ

Андрей Шестаков (Andrey Shestakov) – ведущий яхтенный брокер отдела продаж яхт и судов компании Shestakov Yacht Sales Inc. Официальный представитель Shestakov Yacht Sales Inc. для русскоговорящих клиентов в центральном офисе компании в Майами/Форт Лодердейл/Флорида/США.

Контактная информация

Email: andrey@shestakovyachtsales.com

Web: shestakovyachtsales.com

Телефоны

Краснодарский край: **+7(918)465-66-44**

США, Майами, Флорида: **+1(954)274-4435**

Время работы

Понедельник – Суббота: **9:00 - 21:00**
EDT

Воскресенье: **Закрето**

Адрес



Harbour Towne Marina, 850 NE 3rd St,
STE 213, Dania, FL 33004