

## BLUE TWISTER 2 — ATLANTIS YACHTS



**Builder:** ATLANTIS YACHTS

**Year Built:** 2008

**Model:** Motor Yacht

**Price:** PRICE ON APPLICATION

**Location:** Italy

**LOA:** 50' 0" (15.24m)

**Beam:** 14' 10" (4.50m)

**Min Draft:** 4' 0" (1.21m)

**Max Draft:** 4' 0" (1.21m)

Our experienced yacht broker, Andrey Shestakov, will help you choose and buy a yacht that best suits your needs **BLUE TWISTER 2 — ATLANTIS YACHTS** from our catalogue. Presently, at Shestakov Yacht Sales Inc., we have a wide variety of yachts available on our sale's list. We also work in close contact with all the big yacht manufacturers from all over the world.

If you would like to buy a yacht **BLUE TWISTER 2 — ATLANTIS YACHTS** or would like help answering any questions concerning purchasing, selling or chartering a yacht, please call **+1(954)274-4435**

---

# TABLE OF CONTENTS

---

TABLE OF CONTENTS	2
SPECIFICATIONS	3
Overview	3
Basic Information	4
Dimensions	4
Speed, Capacities and Weight	5
Accommodations	5
Hull and Deck Information	5
Engine Information	5
PHOTOS	6
CONTACTS	11
Contact details	11
Telephones	11
Office hours	11
Address	11

---

# SPECIFICATIONS

---

## Overview

---

**On dry - just 125 hours**

**Cushions/coverings/fabrics/woods/gelcaot : LIKE NEW!!!**

**needs new mattresses and carpets**

Yacht type	<b>Open hard top</b>
Shipyard	<b>Atlantis</b>
Model	<b>50</b>
Year	<b>2008</b>
Length	<b>14.90 Mts.</b>
Beam	<b>4.50 Mts.</b>
Draft	<b>1.21 Mts.</b>
Displacement	<b>23.4 Tns.</b>
Building material	<b>Vtr</b>
Engines	<b>2 x Volvo Penta D12 800</b>
Each engine's power	<b>775 Hps.</b>
Engines hours	<b>125</b>
Fuel capacity	<b>1900 lts.</b>

Water capacity	<b>500 lts.</b>
Cabins	<b>3</b>
Berths	<b>6 + 2</b>
Heads	<b>2</b>
Crew cabin	<b>No</b>
CE Class	<b>"B" Class</b>
Moor	<b>Italy – Adriatic Sea</b>

## Extras:

**Blue hull, up/down hydraulic platform, complete coverings, complete cushions, teak on platform and cockpit, gangway, sink/cooktop/fridge in cockpit, salon wood floor, ceramic glass cooktop in galley, stainless steel fridge and cellar in salon, microwave, LG home theatre, air conditioning (warm/cool, included cockpit), Mase 12Kw generator, bow + stern thrusters, autohelm, Bennet trim tabs, radar, Raymarine E120 gps, vhf, searchlight, 800W stern mooring winches, stereo system (mission frontal device), tridata, dinette table up/down, Atlantis logo pottery.**

## Basic Information

---

**Category:** Motor Yacht

**Model Year:** 2008

**Year Built:** 2008

**Country:** Italy

## Dimensions

---

**LOA:** 50' 0" (15.24m)

**Beam:** 14' 10" (4.50m)

**Min Draft:** 4' 0" (1.21m)

**Max Draft:** 4' 0" (1.21m)

---

## Speed, Capacities and Weight

---

**Water Capacity:** 132.086026 Gallons

**Fuel Capacity:** 501.9268988 Gallons

---

## Accommodations

---

**Total Cabins:** 3

**Total Berths:** 6

**Total Heads:** 2

**Crew Cabin:** 1

**Crew Berths:** 2

---

## Hull and Deck Information

---

**Hull Material:** Fiberglass

---

## Engine Information

---

**Engines:** 2

**Manufacturer:** Volvo Penta

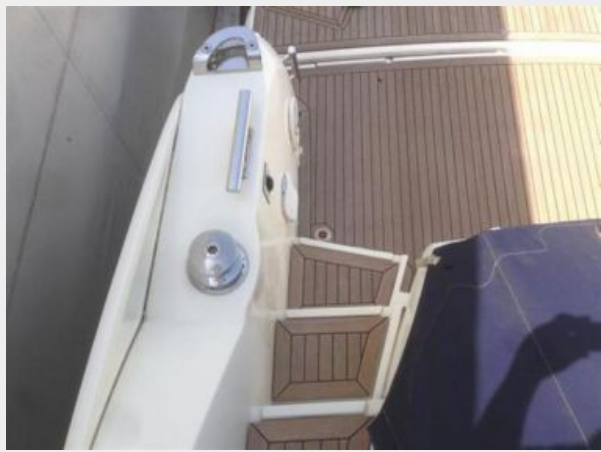
**Model:** D12 800

**Engine Type:** Inboard

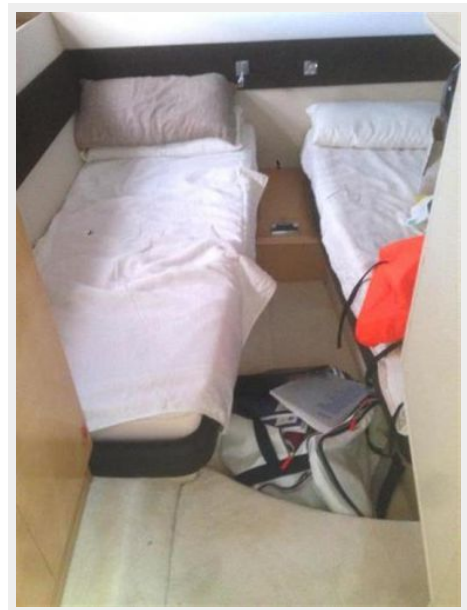
**Fuel Type:** Diesel

# PHOTOS

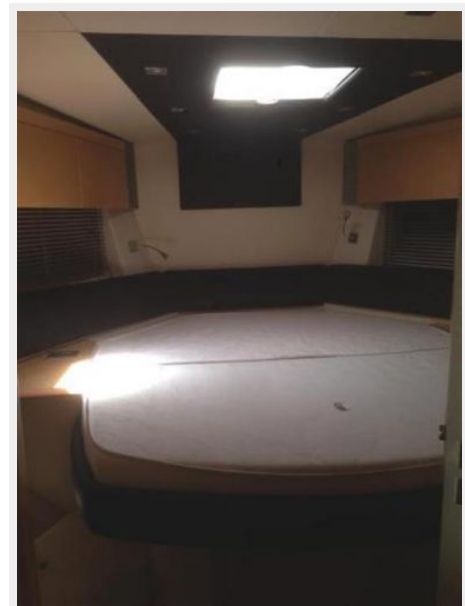














# CONTACTS

---

Andrey Shestakov, leading yacht broker of the sales department of Shestakov Yacht Sales Inc. Shestakov Yacht Sales Inc., the official representative of the Miami/Fort Lauderdale FL headquarters.

## Contact details

---

Email: [andrey@shestakovyachtsales.com](mailto:andrey@shestakovyachtsales.com)

Web: [shestakovyachtsales.com/en/](http://shestakovyachtsales.com/en/)

## Telephones

---

USA: +1(954)274-4435

## Office hours

---

Monday – Saturday: **9:00 - 21:00** EDT

Sunday: **closed**

## Address

---



Harbour Towne Marina, 850 NE 3rd St,  
STE 213, Dania, FL 33004