

EVAGGELIA — BENETEAU



Builder: BENETEAU

Year Built: 2007

Model: Motor Yacht

Price: PRICE ON APPLICATION

Location: Greece

LOA: 51' 3" (15.62m)

Beam: 16' 0" (4.88m)

Min Draft: 6' 8" (2.01m)

Max Draft: 6' 8" (2.01m)

Max Speed: 10 Kts. (12 MPH)

Our experienced yacht broker, Andrey Shestakov, will help you choose and buy a yacht that best suits your needs **EVAGGELIA — BENETEAU** from our catalogue. Presently, at Shestakov Yacht Sales Inc., we have a wide variety of yachts available on our sale's list. We also work in close contact with all the big yacht manufacturers from all over the world.

If you would like to buy a yacht **EVAGGELIA — BENETEAU** or would like help answering any questions concerning purchasing, selling or chartering a yacht, please call **+1(954)274-4435**

TABLE OF CONTENTS

TABLE OF CONTENTS	2
SPECIFICATIONS	3
Overview	3
Basic Information	3
Dimensions	3
Speed, Capacities and Weight	3
Accommodations	3
Hull and Deck Information	3
Engine Information	4
DETAILED INFORMATION	5
Accommodation	5
Additional	5
Vessel Description	5
Exclusions	5
Disclaimer	5
PHOTOS	6
CONTACTS	9
Contact details	9
Telephones	9
Office hours	9
Address	9

SPECIFICATIONS

Overview

This Beneteau 50.5 Cyclades is known for her simple yet practical design offering excellent volume for her size. Her 5 cabin accommodation provides for pleasurable extended sailing and comfort.

Basic Information

Category: Motor Yacht

Model Year: 2007

Year Built: 2007

Country: Greece

Dimensions

LOA: 51' 3" (15.62m)

Beam: 16' 0" (4.88m)

Min Draft: 6' 8" (2.01m)

Max Draft: 6' 8" (2.01m)

Speed, Capacities and Weight

Max Speed: 10 Kts. (12 MPH)

Displacement: 33069.3393 Pounds

Water Capacity: 245.68000836 Gallons

Fuel Capacity: 116.23570288 Gallons

Accommodations

Total Berths: 10

Crew Berths: 1

Hull and Deck Information

Hull Material: Fiberglass

Hull Color: Navy blue hull and hull band with white boot top line

Engine Information

Engines: 1

Manufacturer: Yanmar

Model: 110

Fuel Type: Diesel

DETAILED INFORMATION

Accommodation

On board this stunning Beneteau 50.5 Cyclades are four double cabins, one twin, three heads and a crew cabin with ensuite facilities.

Additional

All necessary equipment according to the local regulations
Anchor winch - Quick with chain and rope
Autopilot - Raymarine ST 70
Bathing platform with swimming ladder
Battery charger and 220 V shore supply
Chart plotter
Cockpit cushions
Deck shower
Depth Sounder - ST 6000
Electric refrigerator
Freezer - Vitrifrigo
Gangway
GPS
Hot water
Liferaft
Log-Speedometer - Raymarine
Oven
Radio/CD player - ALPINE
Refrigerator x 2 - Vitrifrigo
Sea charts and cruising guides
VHF - Raymarine 54 E
Wind Instrument

Vessel Description

This Beneteau 50.5 Cyclades is known for her simple yet practical design offering excellent volume for her size. Her 5 cabin accommodation provides for pleasurable extended sailing and comfort.

Exclusions

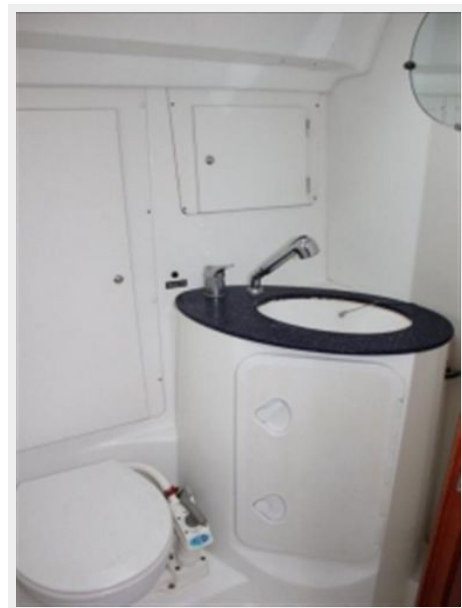
Owner's personal belongings.

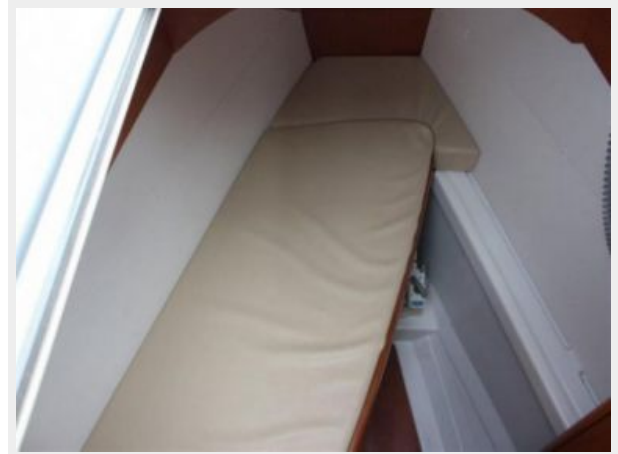
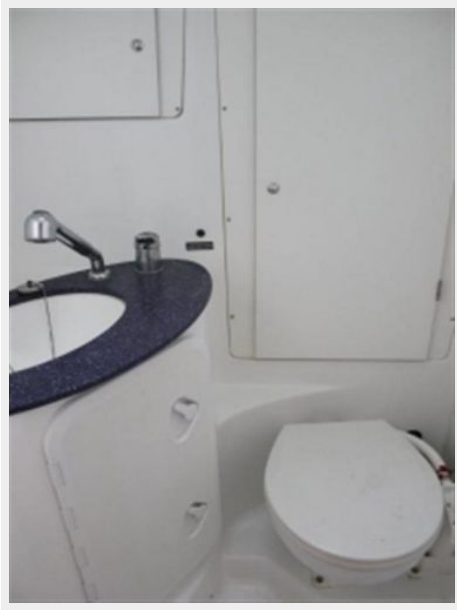
Disclaimer

The Company offers the details of this vessel or yacht in good faith but cannot guarantee or warrant the accuracy of this information nor warrant the condition of the vessel. A buyer should instruct his representatives, agents, or his surveyors, to investigate such details as the buyer desires validated. This vessel or yacht is offered subject to prior sale, price change, or withdrawal without notice.

PHOTOS







CONTACTS

Andrey Shestakov, leading yacht broker of the sales department of Shestakov Yacht Sales Inc. Shestakov Yacht Sales Inc., the official representative of the Miami/Fort Lauderdale FL headquarters.

Contact details

Email: andrey@shestakovyachtsales.com

Web: shestakovyachtsales.com/en/

Telephones

USA: +1(954)274-4435

Office hours

Monday – Saturday: **9:00 - 21:00** EDT

Sunday: **closed**

Address



Harbour Towne Marina, 850 NE 3rd St,
STE 213, Dania, FL 33004